



## Supplementary Materials

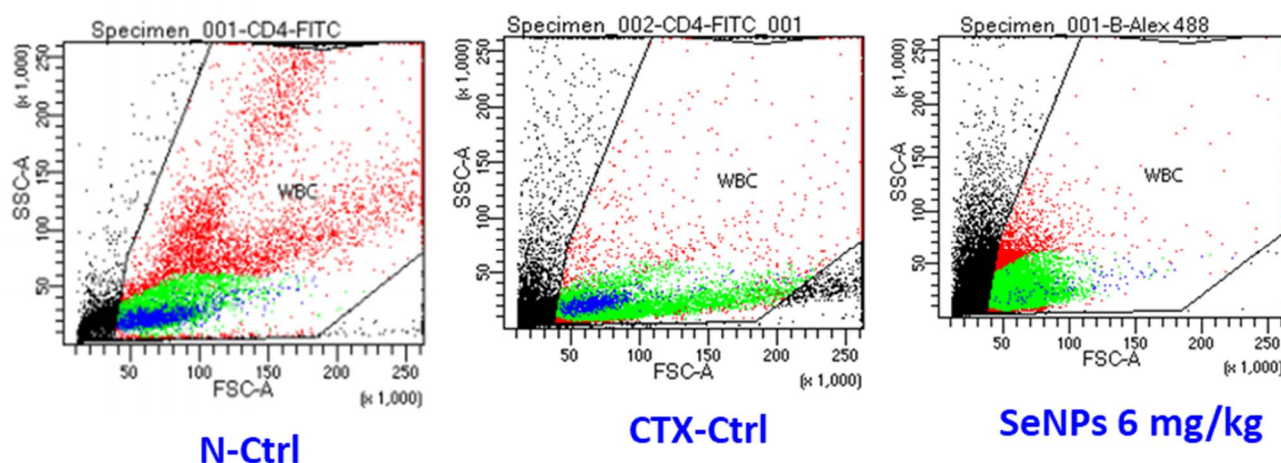
# Radiation Synthesis of Selenium Nanoparticles Capped with $\beta$ -Glucan and Its Immunostimulant Activity in Cytosan-Induced Immunosuppressed Mice

Nguyen Thi Dung <sup>1,2</sup>, Tran Duc Trong <sup>1</sup>, Nguyen Thanh Vu <sup>1</sup>, Nguyen Trong Binh <sup>1</sup>, Tran Thi Le Minh <sup>2</sup> and Le Quang Luan <sup>1,\*</sup>

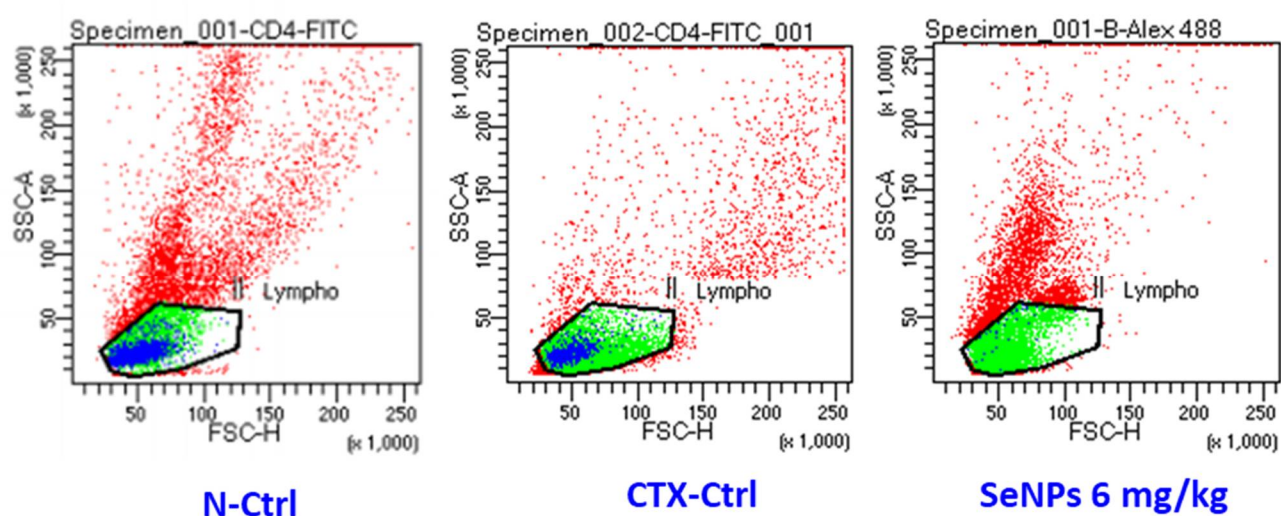
<sup>1</sup> Biotechnology Center of Ho Chi Minh City, Ho Chi Minh City 700000, Vietnam; thuydung9810@gmail.com (N.T.D.); trong21052011@gmail.com (T.D.T.); ntvu1412@gmail.com (N.T.V.); nguyentrongbinhcnsh@yahoo.com (N.T.B.)

<sup>2</sup> Faculty of Biologinal Sciences, Nong Lam University, Ho Chi Minh City 700000, Vietnam; ttlminh@hcmuaf.edu.vn

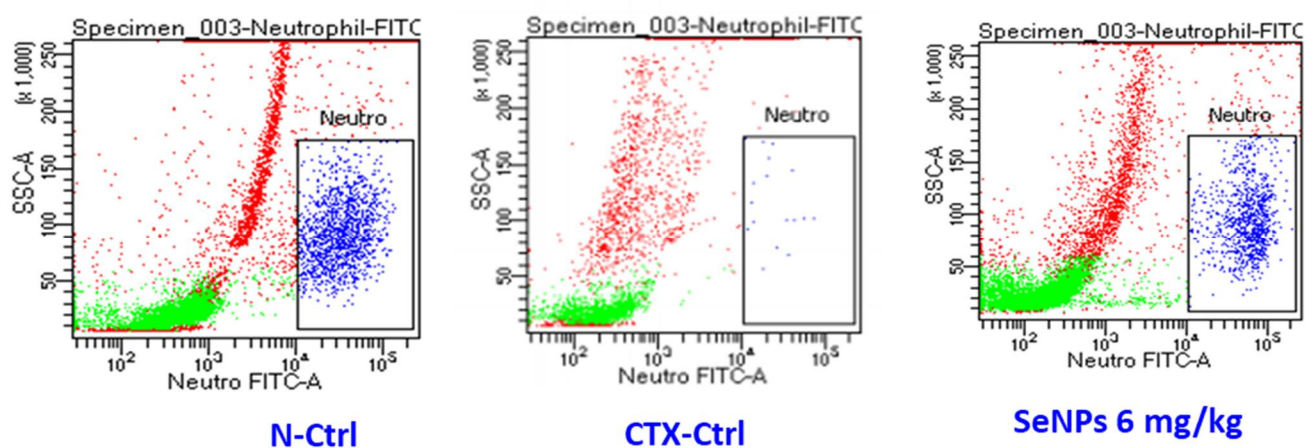
\* Correspondence: lequangluan@gmail.com



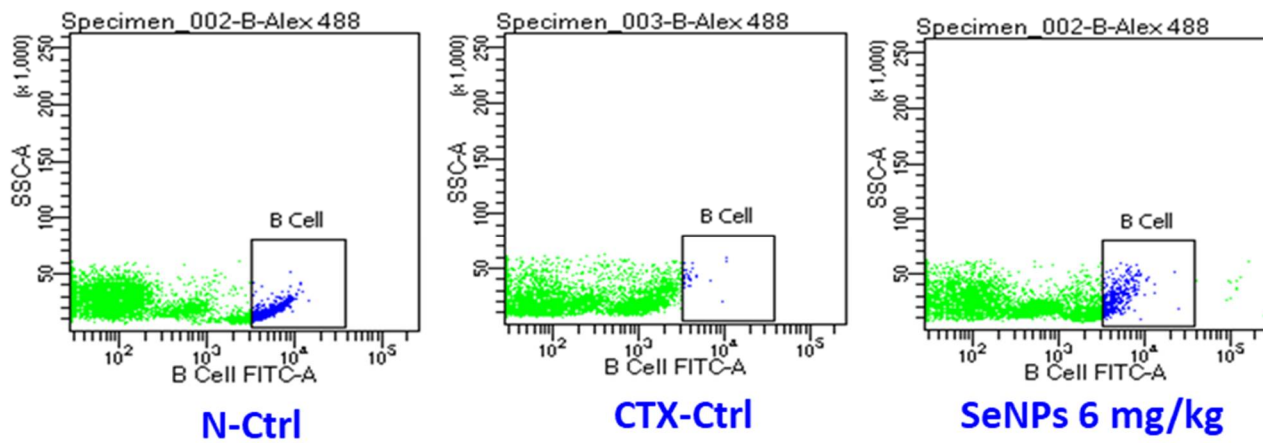
**Figure S1.** The typical flow cytometry scatter plots of WBCs in peripheral bloods of normal control mice received only distilled water (N-Ctrl), CTX-induced immunosuppressive mice received only distilled water (CTX-Ctrl) and mice supplied with 6 mg SeNPs kg<sup>-1</sup> for 14 days.



**Figure S2.** The typical flow cytometry scatter plots of lymphocyte in peripheral bloods of normal control mice received only distilled water (N-Ctrl), CTX-induced immunosuppressive mice received only distilled water (CTX-Ctrl) and mice supplied with 6 mg SeNPs  $\text{kg}^{-1}$  for 14 days.

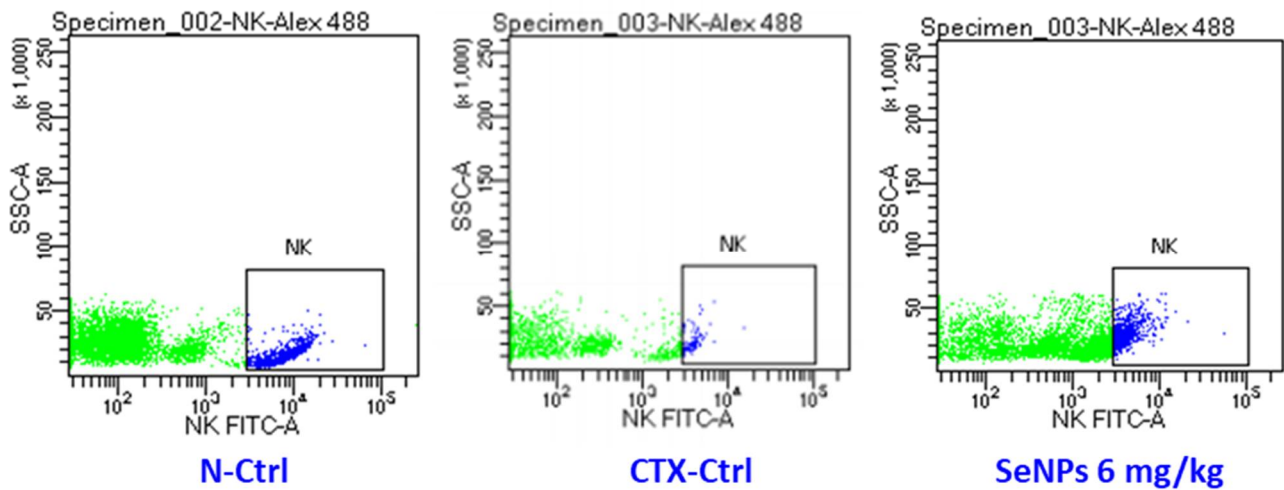


**Figure S3.** The typical flow cytometry scatter plots of neutrophil in peripheral bloods of normal control mice received only distilled water (N-Ctrl), CTX-induced immunosuppressive mice received only distilled water (CTX-Ctrl) and mice supplied with 6 mg SeNPs  $\text{kg}^{-1}$  for 14 days.

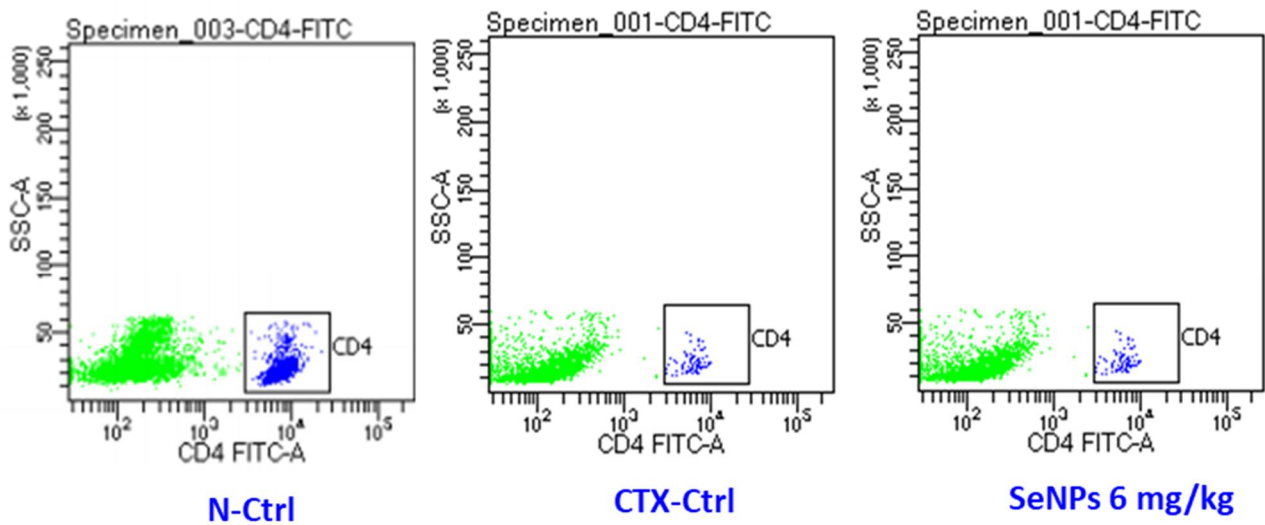


#### B cells in blood

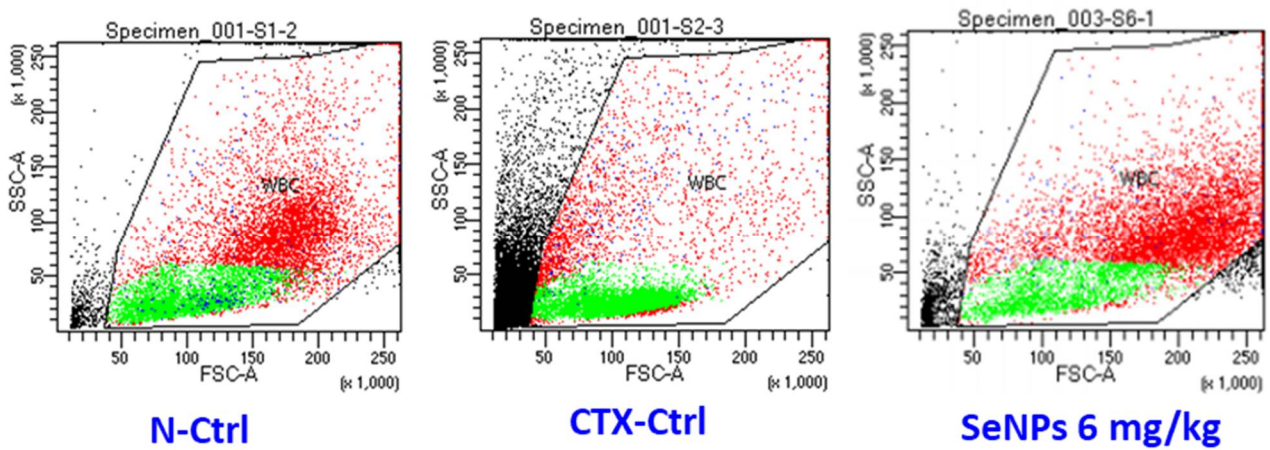
**Figure S4.** The typical flow cytometry scatter plots of B cells in peripheral bloods of normal control mice received only distilled water (N-Ctrl), CTX-induced immunosuppressive mice received only distilled water (CTX-Ctrl) and mice supplied with 6 mg SeNPs  $\text{kg}^{-1}$  for 14 days.



**Figure S5.** The typical flow cytometry scatter plots of natural killer cells in peripheral bloods of normal control mice received only distilled water (N-Ctrl), CTX-induced immunosuppressive mice received only distilled water (CTX-Ctrl) and mice supplied with 6 mg SeNPs  $\text{kg}^{-1}$  for 14 days.

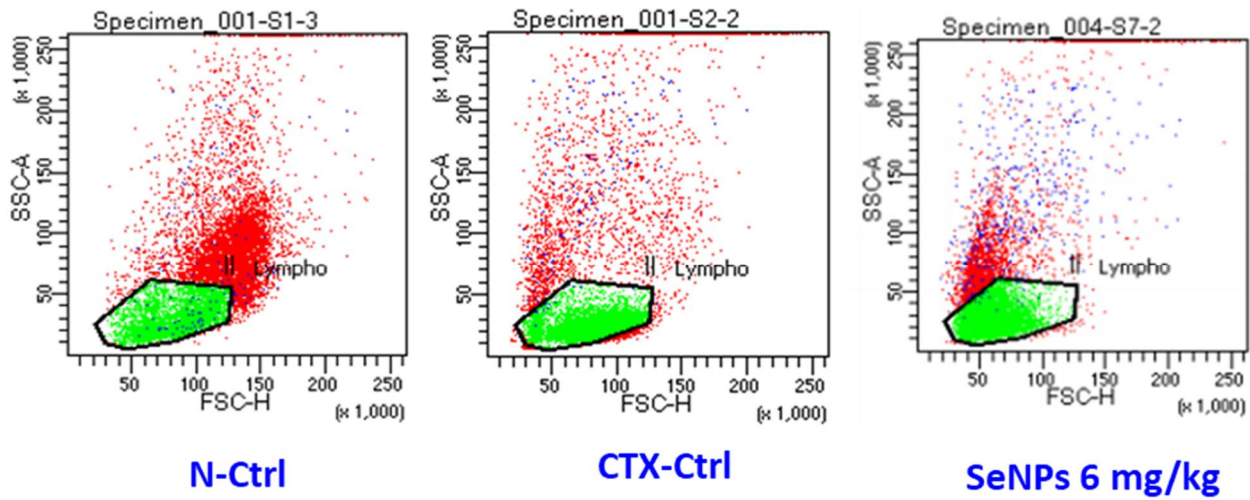


**Figure S6.** The typical flow cytometry scatter plots of CD4<sup>+</sup> cells in peripheral bloods of normal control mice received only distilled water (N-Ctrl), CTX-induced immunosuppressive mice received only distilled water (CTX-Ctrl) and mice supplied with 6 mg SeNPs kg<sup>-1</sup> for 14 days.

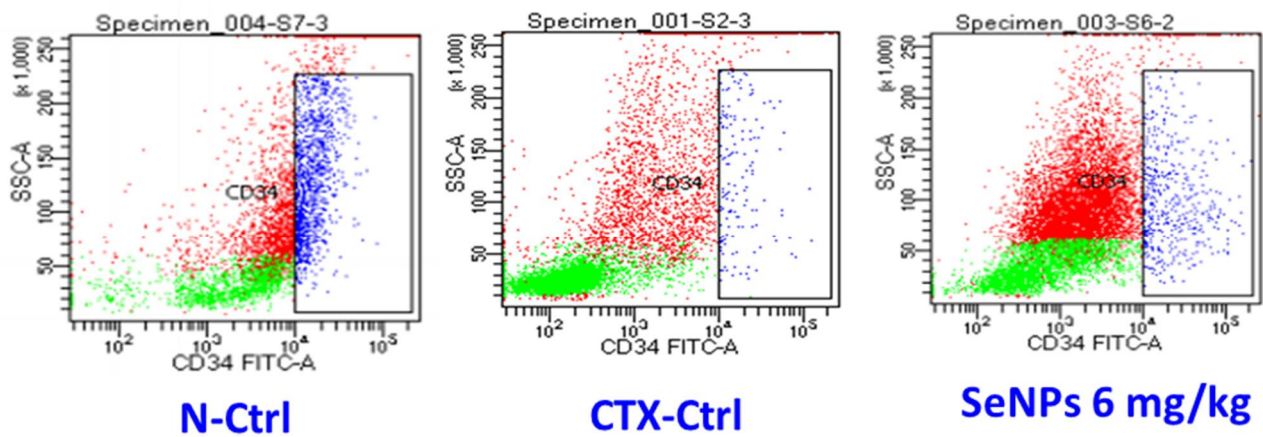


**Figure S7.** The typical flow cytometry scatter plots of WBCs in bone marrow of normal control mice received only distilled water (N-Ctrl), CTX-induced immunosuppressive mice received only distilled water (CTX-Ctrl) and mice supplied with 6 mg SeNPs kg<sup>-1</sup> for 14 days.





**Figure S8.** The typical flow cytometry scatter plots of lymphocytes in bone marrow of normal control mice received only distilled water (N-Ctrl), CTX-induced immunosuppressive mice received only distilled water (CTX-Ctrl) and mice supplied with 6 mg SeNPs kg<sup>-1</sup> for 14 days.



**Figure S9.** The typical flow cytometry scatter plots of CD34<sup>+</sup> cells in bone marrow of normal control mice received only distilled water (N-Ctrl), CTX-induced immunosuppressive mice received only distilled water (CTX-Ctrl) and mice supplied with 6 mg SeNPs kg<sup>-1</sup> for 14 days.