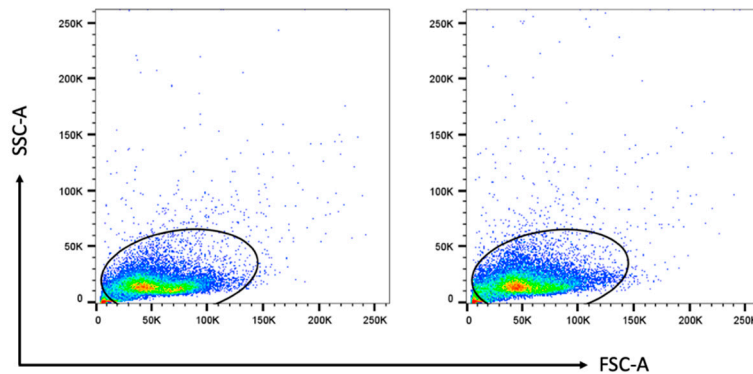
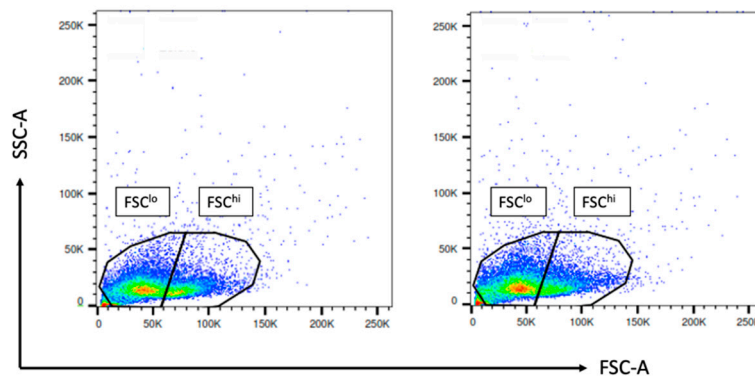


## Supplementary Figure S1

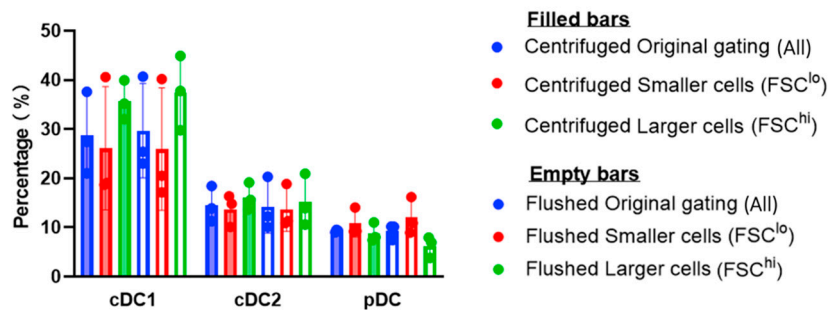
A



B



C



**The proportions of DC subsets in the culture based on cell size. (A)** The SSC-A/FSC-A gating including all cells in a wide gate for flushed cells (left) and centrifuged cells (right). A representative experimental day is shown. **(B)** Flushed cells (left) and centrifuged cells (right) from the same experimental day as (A), gated according to cell size (FSC-A). Cells smaller in size are gated as FSC<sup>lo</sup> and larger cells as FSC<sup>hi</sup>. **(C)** The proportions of different DC subsets based on FSC-A gating, comparing all cells (original gating from A, blue), smaller cells (FSC<sup>lo</sup>, red), and larger cells (FSC<sup>hi</sup>, green), for both bone marrow isolation methods (centrifuged or flushed).