

Supporting Information

ZIF-67-Derived Flexible Sulfur Cathode with Improved Redox Kinetics for High-Performance Li-S Batteries

Chen Cheng ¹, Hanyan Wu ¹, Xinyang Chen ¹, Shuiping Cai ¹, Yingkang Tian ¹, Xiaofei Yang ² and Xuejie Gao ^{1,*}

¹ Center for Lignocellulosic Chemistry and Biomaterials, College of Light Industry and Chemical Engineering, Dalian Polytechnic University, Dalian 116034, China; cc15298509429@163.com (C.C.); wuhy1904@163.com (H.W.); cxysmail1@gmail.com (X.C.); caishuiping1086@163.com (S.C.); m15304113180@163.com (Y.T.)

² Division of Energy Storage, Dalian National Laboratory for Clean Energy, Dalian Institute of Chemical Physics, Chinese Academy of Sciences, 457 Zhongshan Road, Dalian 116023, China; yangxf@dicp.ac.cn

* Correspondence: gaoxuejie1107@163.com

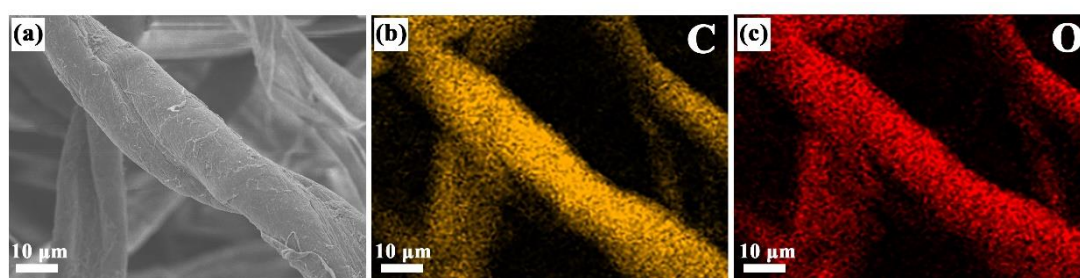


Figure S1: SEM images of (a) CL and (b) (c) corresponding elemental mappings of C, O.

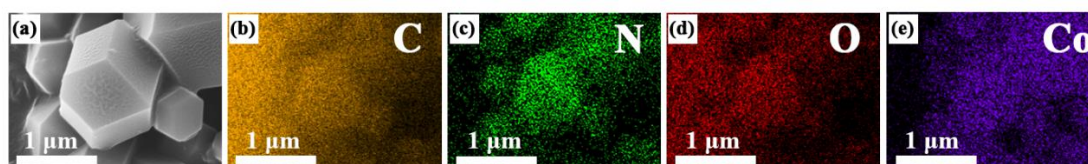


Figure S2: SEM images of (a) ZIF-67 powder and (b-e) corresponding elemental mappings of C, N, O, Co.

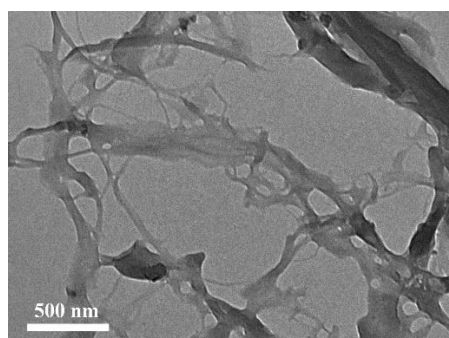


Figure S3: TEM images of CL.

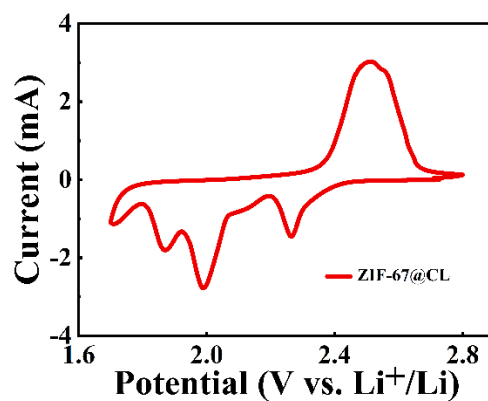


Figure S4: CV profiles at first cycle.

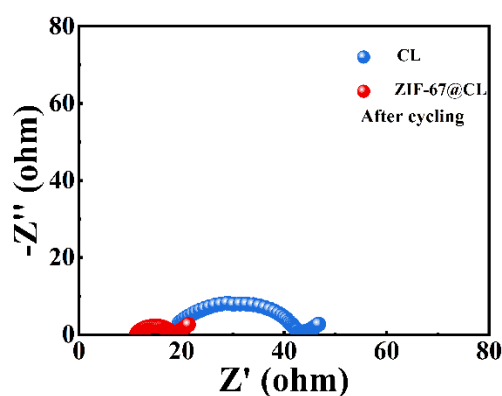


Figure S5: EIS plots after cycling.

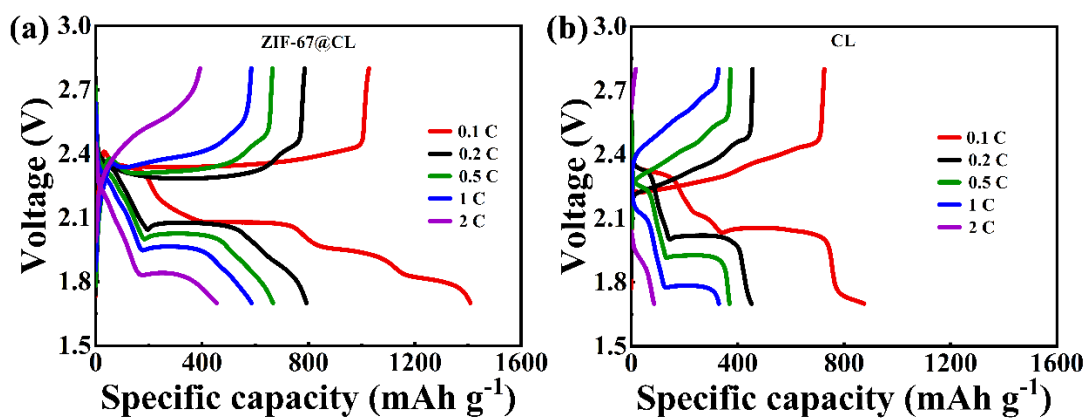


Figure S6: Rate performance correspond charge/discharge profiles of (a) S/ZIF-67@CL and (b) S/CL.

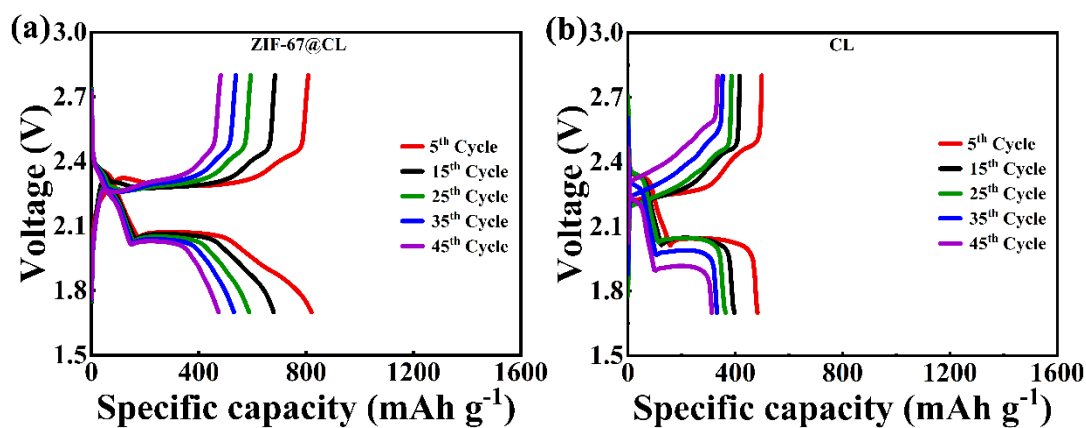


Figure S7: (a) S/ZIF-67@CL and (b) S/CL charge/discharge curves of different cycles at 0.2 C.

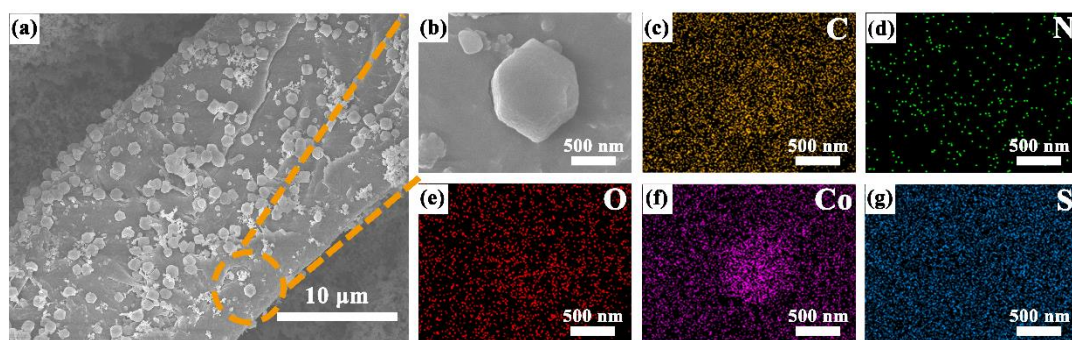


Figure S8: SEM images of (a) (b) ZIF-67@CL after Li-S batteries cycling and (c-g) corresponding elemental mappings of C, N, O, Co, S.

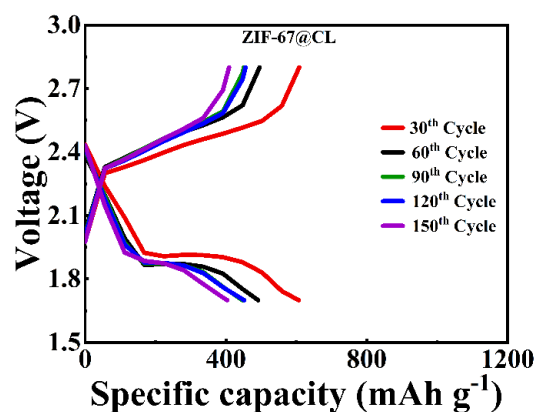


Figure S9: S/ZIF-67@CL charge/discharge curves of different cycles at 2 C.