

Supporting Information

On the diffusion of ionic liquids in ILs@ZIF-8 composite materials: a density functional theory study

Longlong Liu,^a Kun Jiang,^a Qingjun Chen,^b Lei Liu^{a*}

^a Center for Computational Chemistry, College of Chemistry and Chemical Engineering, Wuhan Textile University, Wuhan, 430200 P. R. China

^b Key Laboratory of Rare Earths, Ganjiang Innovation Academy, Chinese Academy of Sciences, Ganzhou 341000, China

Corresponding author:

Lei Liu, liulei3039@gmail.com; liulei@wtu.edu

Figure S1 Three different ways and their diameters of the $[\text{PF}_6]^-$ pathing through the ZIF-8 pore.

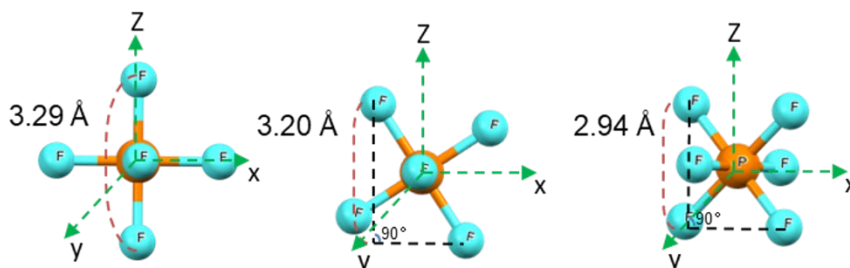


Figure S2. Interaction energy components calculated using the GKS-EDA method at the B3LYP-D3(BJ)/6-311+G* level for the different $[\text{PF}_6]^-$ ways towards the ZIF-8 aperture.

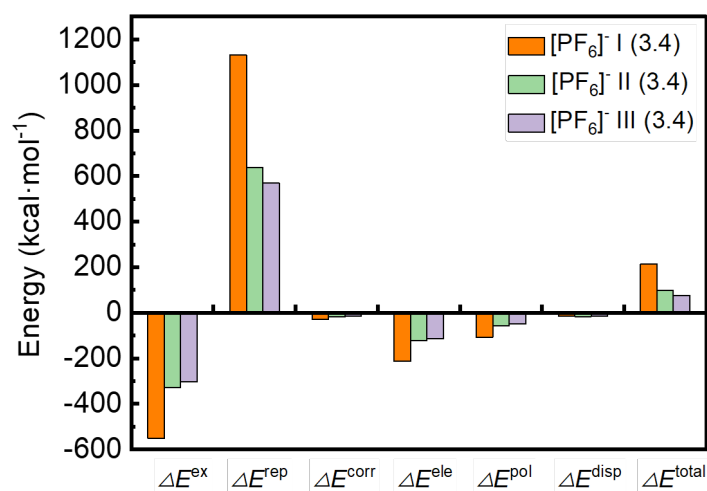


Figure S3. The structures for the points with the highest interaction energies in the cases of $[\text{PF}_6]^-/[\text{C}_4\text{mim}]^+$ and ZIF-8(3.4), respectively, and the average distance refers to the closest distances between the fluorine atom on the $[\text{PF}_6]^-$, or the hydrogen atoms on the $[\text{C}_4\text{mim}]^+$ and the hydrogen atom on the aperture.

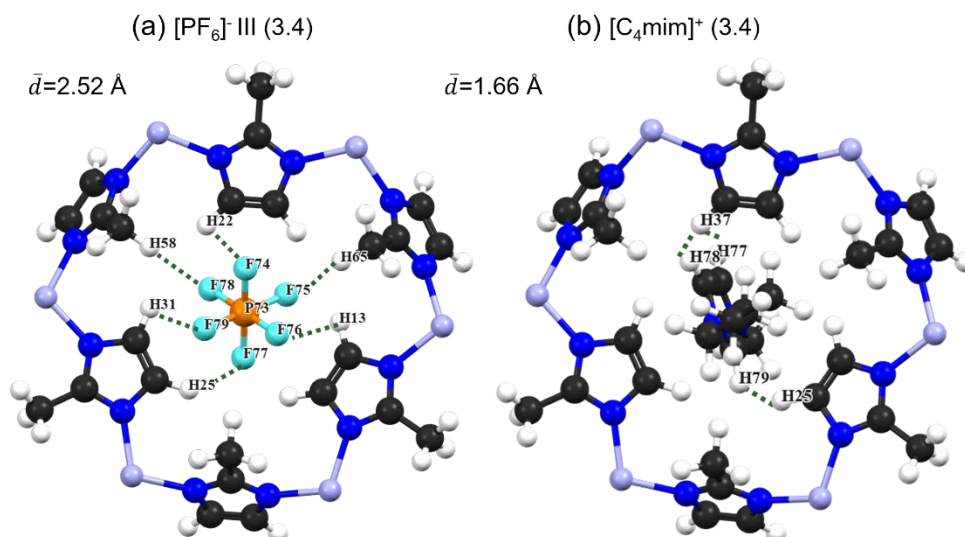


Table S1. NPA charge analysis of $[\text{PF}_6]^-/[\text{C}_4\text{mim}]^+$ and ZIF-8(3.4) at theoretical levels of B3LYP-D3(BJ)/6-311+G*.(values are in e)

System	$q(\text{anion})$	$q(\text{cation})$	$\Delta q(\text{ZIF-8})$
$[\text{PF}_6]^-$ III (3.4)	-0.914	--	-0.086 ^a
$[\text{C}_4\text{mim}]^+$ (3.4)	--	0.916	0.084 ^b

*The initial charge of the ZIF-8 surface is zero.

$q(\text{anion})$ and $q(\text{cation})$ is the charge distribution of $[\text{PF}_6]^-$ and $[\text{C}_4\text{mim}]^+$ after the NPA charge calculation results, respectively.

^a $\Delta q(\text{ZIF-8})$ is the sum of the charge distribution in the $[\text{PF}_6]^-$ -ZIF-8(3.4) system.

^b $\Delta q(\text{ZIF-8})$ is the sum of the charge distribution in the $[\text{C}_4\text{mim}]^+$ -ZIF-8(3.4) system.