
Supplementary Material

The Effect of Essential Oils from Asteraceae Plants on Behavior and Selected Physiological Parameters of the Bird Cherry-Oat Aphid

Paweł Czerniewicz ^{1,*}, Hubert Sytykiewicz ¹ and Grzegorz Chrzanowski ²

¹ Institute of Biological Sciences, Faculty of Natural Sciences, University of Siedlce, Prusa 14, 08-110 Siedlce, Poland; hubert.sytykiewicz@uws.edu.pl

² Institute of Biotechnology, University of Rzeszow, Zelwerowicza 8B, 35-601 Rzeszow, Poland; gchrzanowski@ur.edu.pl

* Correspondence: pawel.czerniewicz@uws.edu.pl; Tel.: +48-25-643-1389

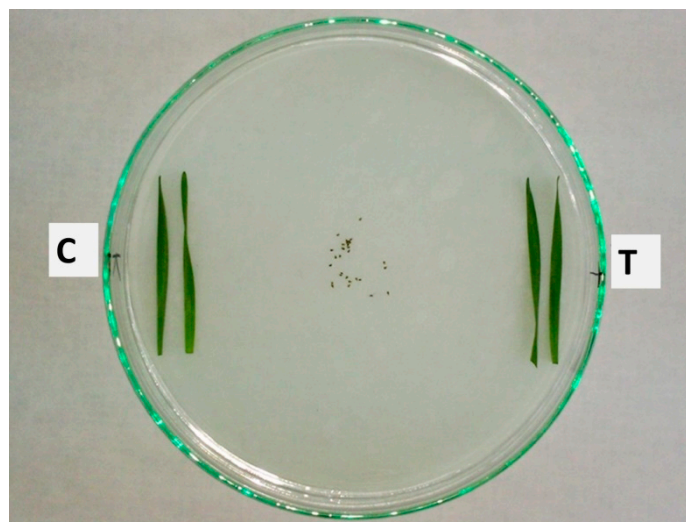


Figure S1. Bioassays of settling inhibition in *Rhopalosiphum padi*; C—control leaves; T—treated leaves; aphid females were placed in the centre of Petri dish (20 cm diameter).

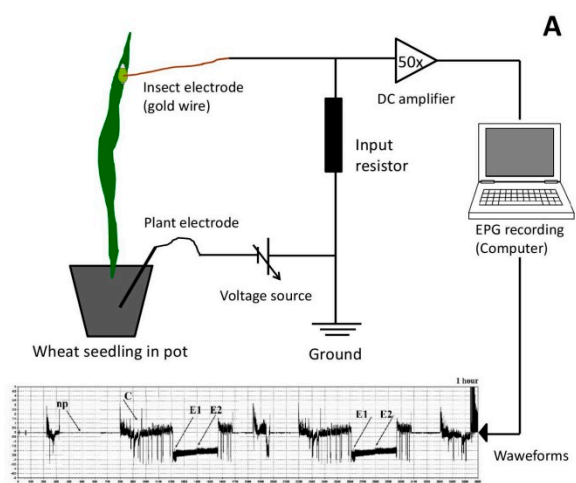


Figure S2. Analysis of aphid feeding behaviour by electronic penetration graph (EPG) technique; (A) EPG recording schematic diagram; (B) Bird cherry-oat aphid on wheat seedling during EPG recording.