

Supplementary Materials

Catalytic hydroconversion of model compounds over Ni/NiO@NC nanoparticles

Ting Liu ^{*, †}, Yanxi Ma [†], Yakun Tang, Yue Zhang, Jingmei Liu, Xiaodong Zhou,
Xiaohui Li and Lang Liu ^{*}

State Key Laboratory of Chemistry and Utilization of Carbon Based Energy
Resources; College of Chemistry, Xinjiang University, Urumqi, 830017, Xinjiang, PR
China.

^{*} Correspondence: liut @xju.edu.cn (T.L.); liulang @xju.edu.cn (L.L.)

[†] These authors contributed equally to this work.

Content

Figure S1. Fitted curves at (a) Ni (b) NiO.

Figure S2. XPS survey scans of Ni/NiO@NC_{10,000-10-350}.

Figure S3. XPS spectra at C 1s regions.

Figure S4. SEM-EDS pattern of Ni/NiO@NC_{10,000-10-350}.

Figure S5. SEM images of the (a)Ni/NiO@NC₈₀₀₀₋₁₀₋₃₅₀, (b)Ni/NiO@NC_{30,000-10-350},
(c)Ni/NiO@NC_{58,000-10-350}.

Figure S1. Fitted curves at (a) Ni (b) NiO.

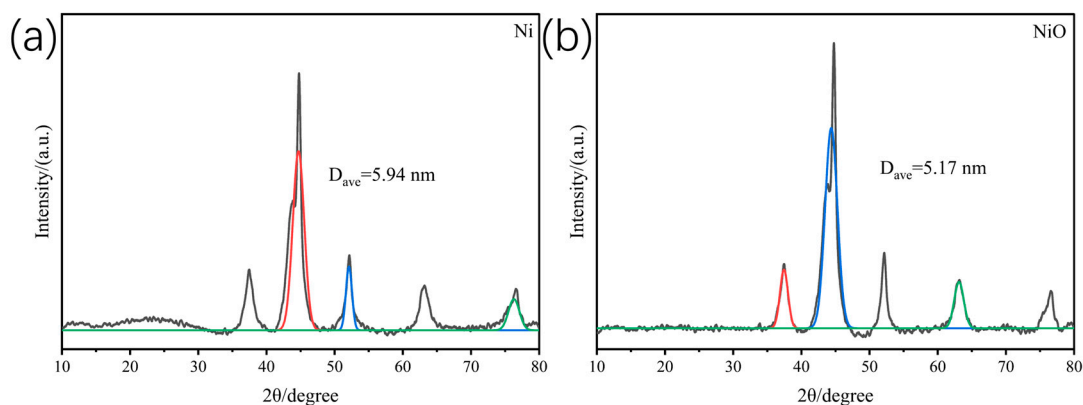


Figure S2. XPS survey scans of Ni/NiO@NC_{10,000-10-350}.

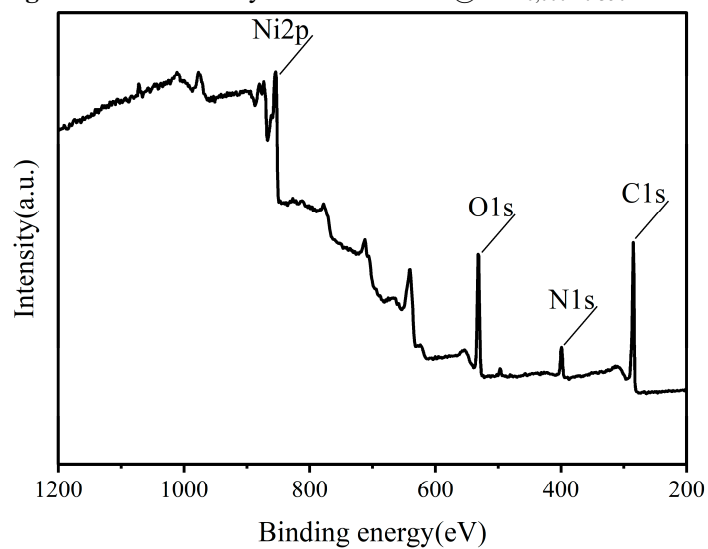


Figure S3. XPS spectra at C 1s regions.

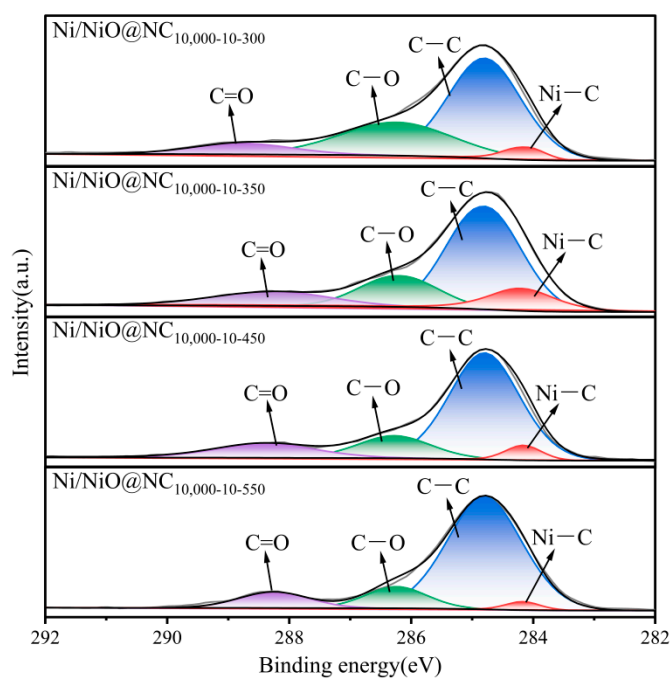


Figure S4. SEM-EDS pattern of Ni/NiO@NC_{10,000-10-350}.

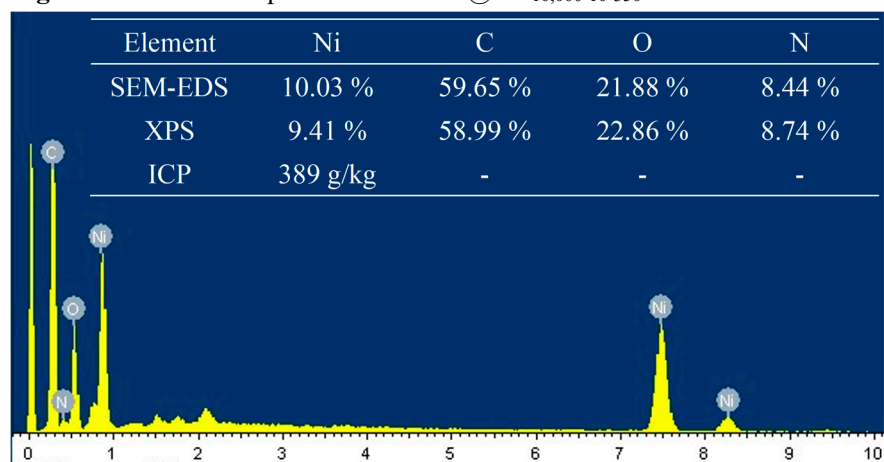


Figure S5. SEM images of the (a)Ni/NiO@NC₈₀₀₀₋₁₀₋₃₅₀, (b)Ni/NiO@NC_{30,000-10-350}, (c)Ni/NiO@NC_{58,000-10-350}.

