

Figure S1: ^1H RMN (500 MHz) spectrum of the vestitol in CDCl_3

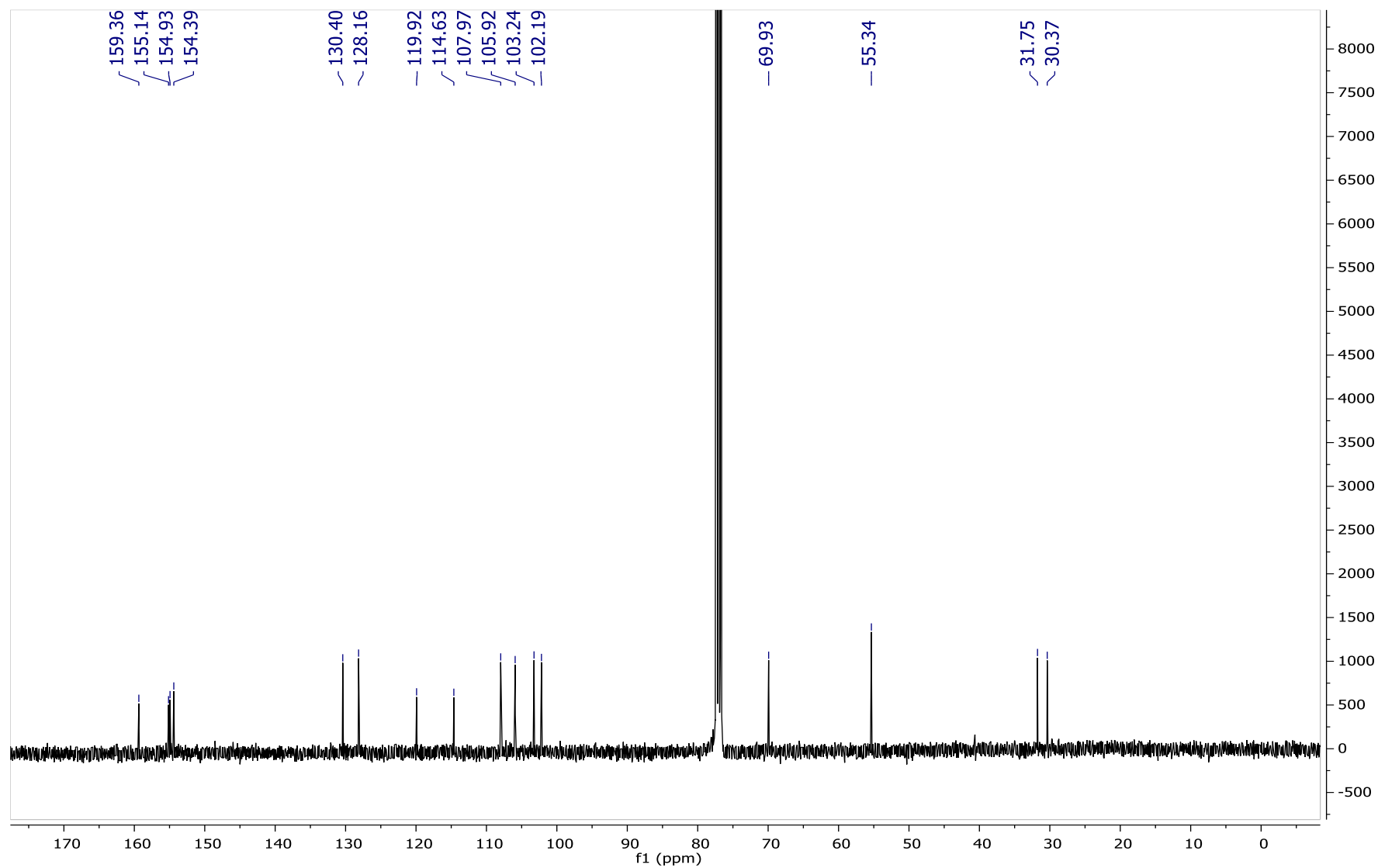


Figure S2: ¹³C RMN (125 MHz) spectrum of the vestitol in CDCl₃

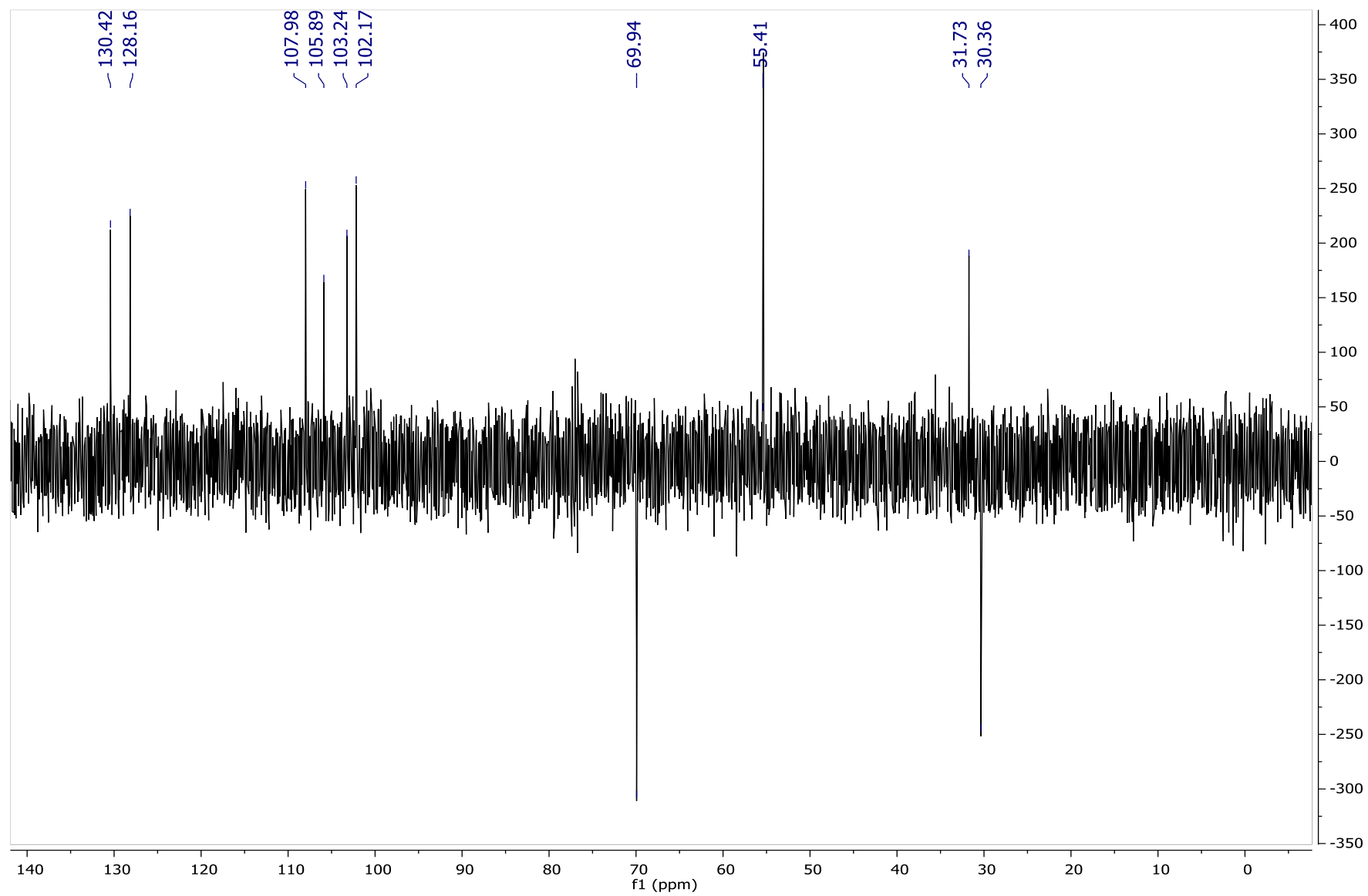


Figure S3: ^{13}C RMN, DEPT 135° (125 MHz) spectrum of the vestitol in CDCl_3

Pv_c2_3B pos mais TFA 100_700 #1 RT: 0.02 AV: 1 NL: 6.61E6
T: FTMS + p ESI Full ms [100.0000-700.0000]

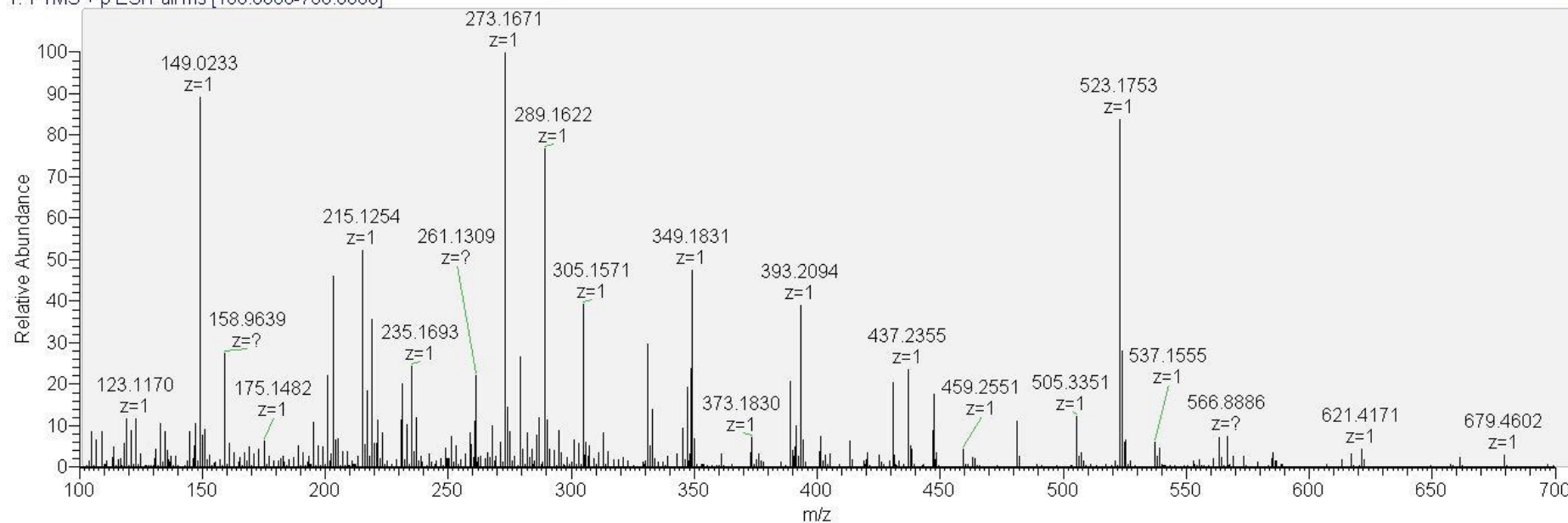


Figure S4: High resolution mass spectrum of the vestitol in the positive ion mode

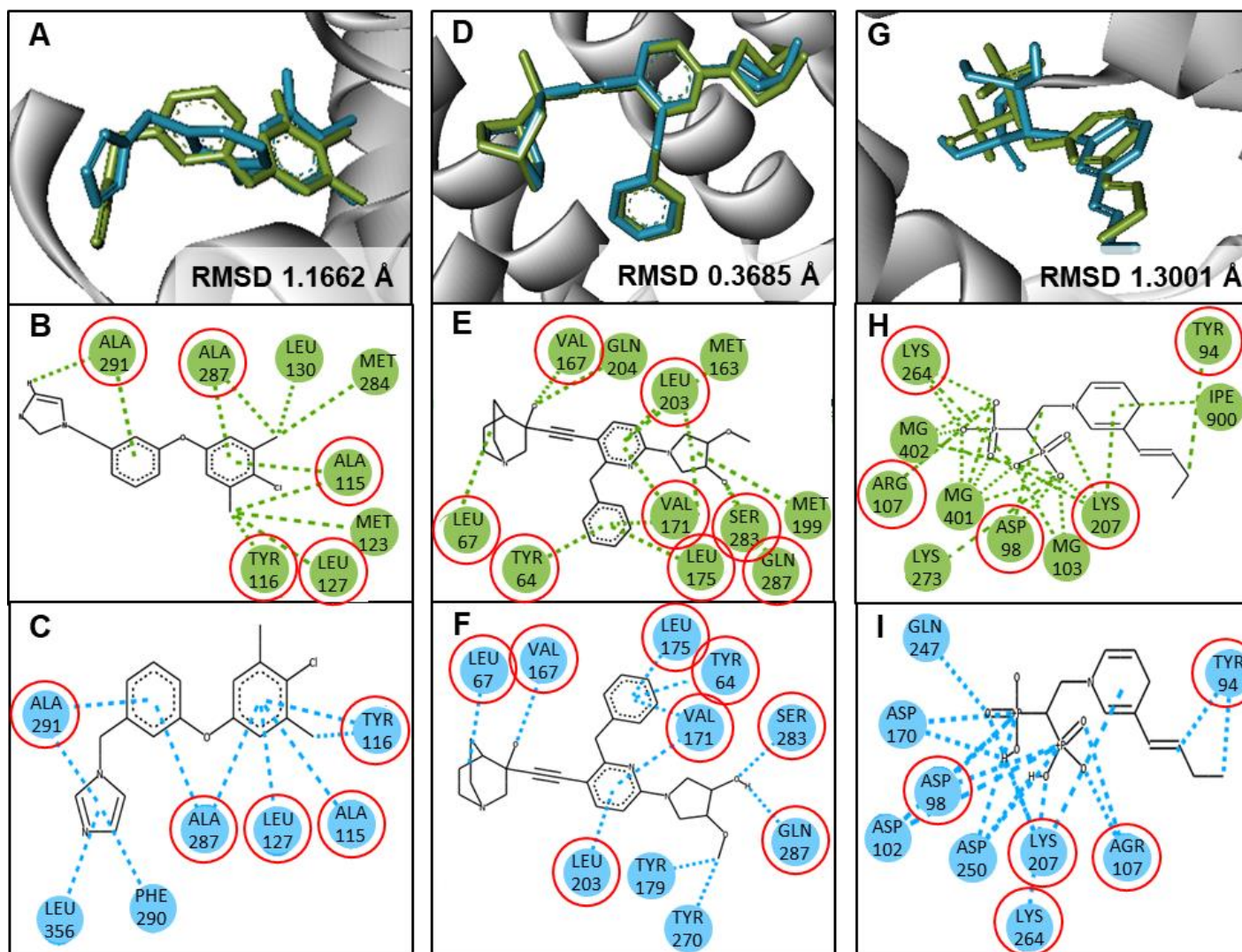


Figure S5: Superimposition of re-docked and 2D molecular interaction analysis for CYP51 (**A**, **B** and **C**), squalene synthase (**D**, **E** and **F**) and farnesyl synthase (**G**, **H** and **I**). Co-crystallized ligand (green) and the re-docked ligand (blue). Red cycle: similar residues comparing co-crystallized ligand and the re-docked ligand.