

Electronic Supplementary Information (ESI)

A High Crystalline Perylene-based Hydrogen-bonded Organic Framework for Enhanced Photocatalytic H₂O₂ Evolution

Mengke Hu [†], Chenxi Wu [†], Shufan Feng and Jianli Hua ^{*}

Key Laboratory for Advanced Materials, School of Chemistry and Molecular Engineering, East China University of Science and Technology, 130 Meilong Road, Shanghai 200237, China; y30210401@mail.ecust.edu.cn (M.H.); y30230414@mail.ecust.edu.cn (C.W.); y12223040@mail.ecust.edu.cn (S.F.)

^{*} Correspondence: jlhua@ecust.edu.cn

[†] These authors contributed equally to this work.

Table of Contents

Section	Title	Pages
Figure S1	XPS spectra of PTPA	S3
Figure S2	Tauc plots of PTBA and PTPA	S3
Figure S3	Mott-Schottky plots of PTBA and PTPA	S3
Figure S4	XPS spectra of PTBA before and after reaction	S4
Figure S5-10	NMR and MS (MALDI TOF) spectra	S5-7

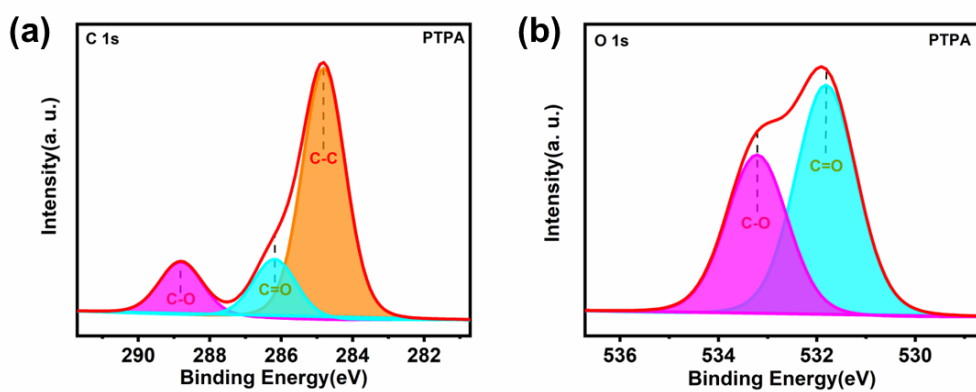


Figure S1. XPS spectra of **PTPA** (a) C 1s and (b) O 1s.

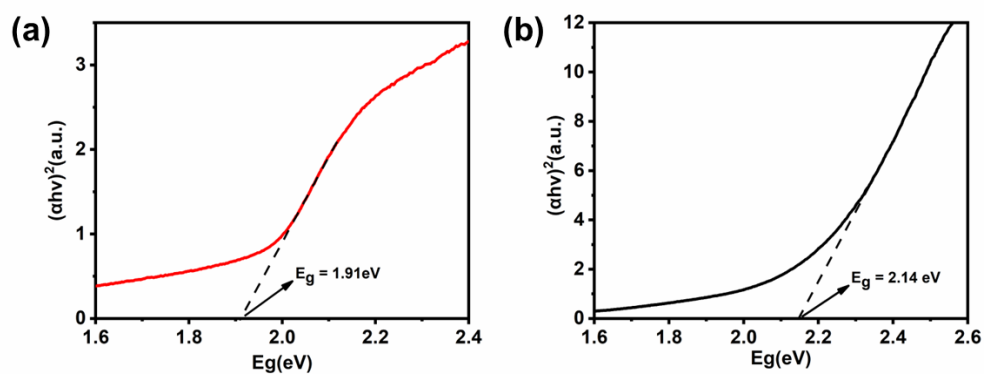


Figure S2. Tauc plots of (a) **PTBA** and (b) **PTPA**.

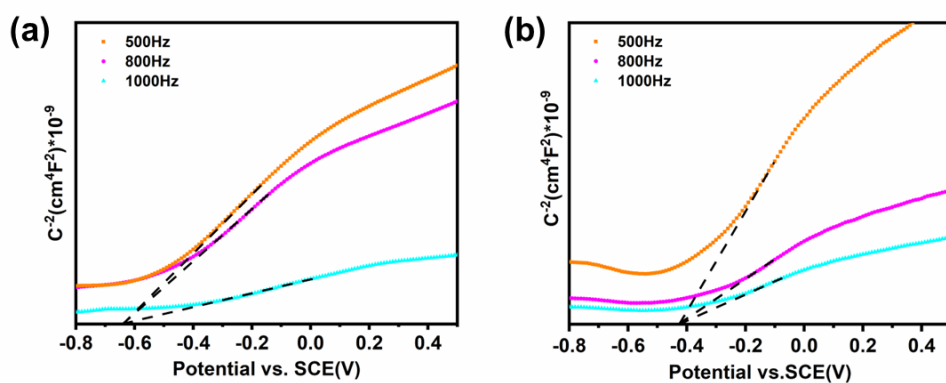
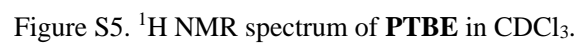
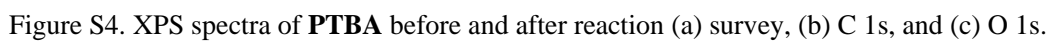


Figure S3. Mott-Schottky plots of (a) **PTBA** and (b) **PTPA**.



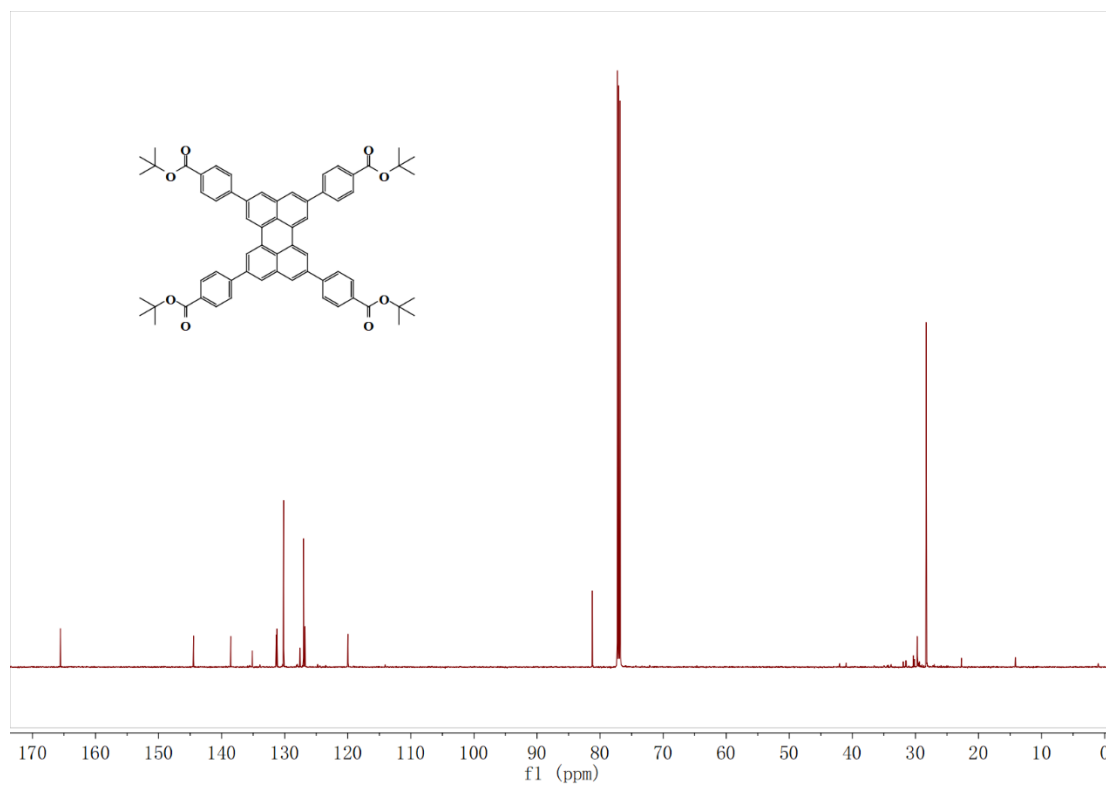


Figure S6. ^{13}C NMR spectrum of **PTBE** in CDCl_3 .

Applied Biosystems 4700 Proteomics Analyzer T2020

4700 Reflector Spec #1 MC[BP = 956.3, 3151]

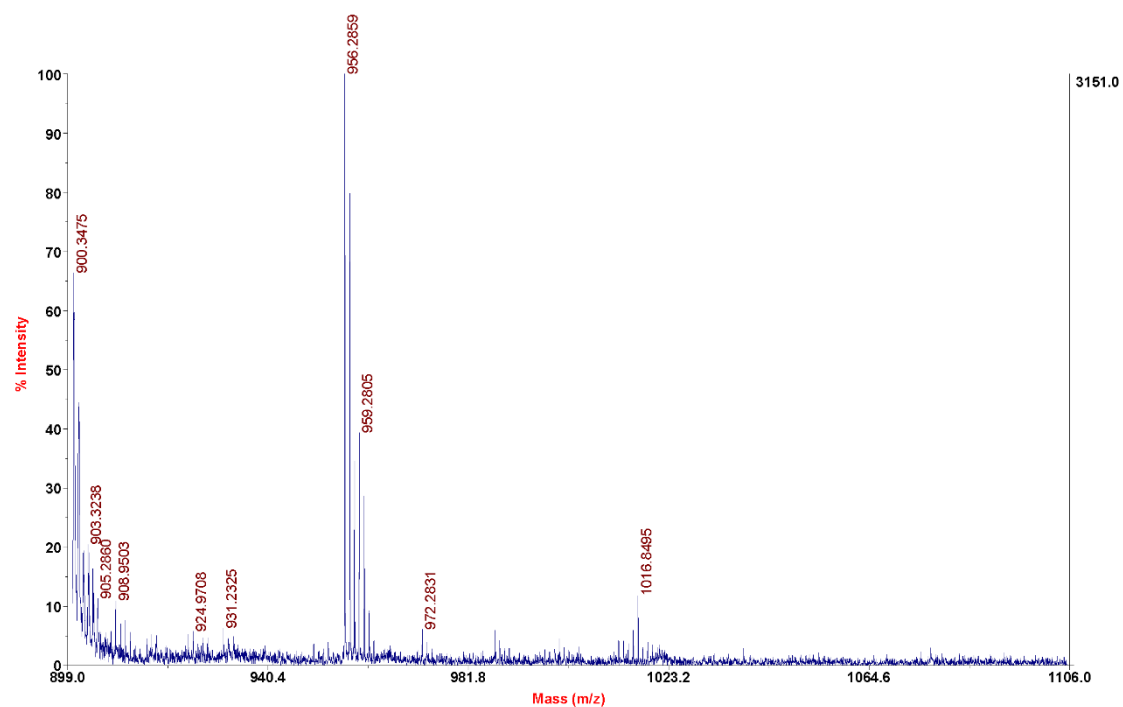


Figure S7. MS (MALDI TOF) of **PTBE**.

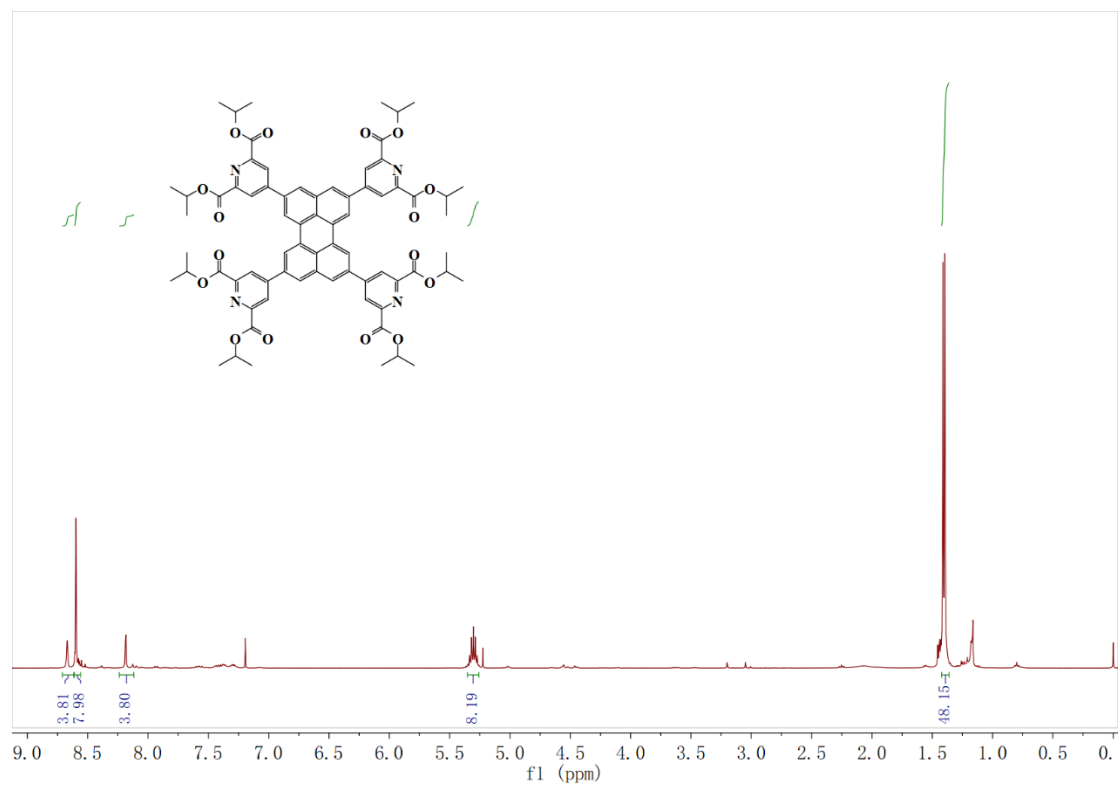


Figure S8. ^1H NMR spectrum of **PTPE** in CDCl_3 .

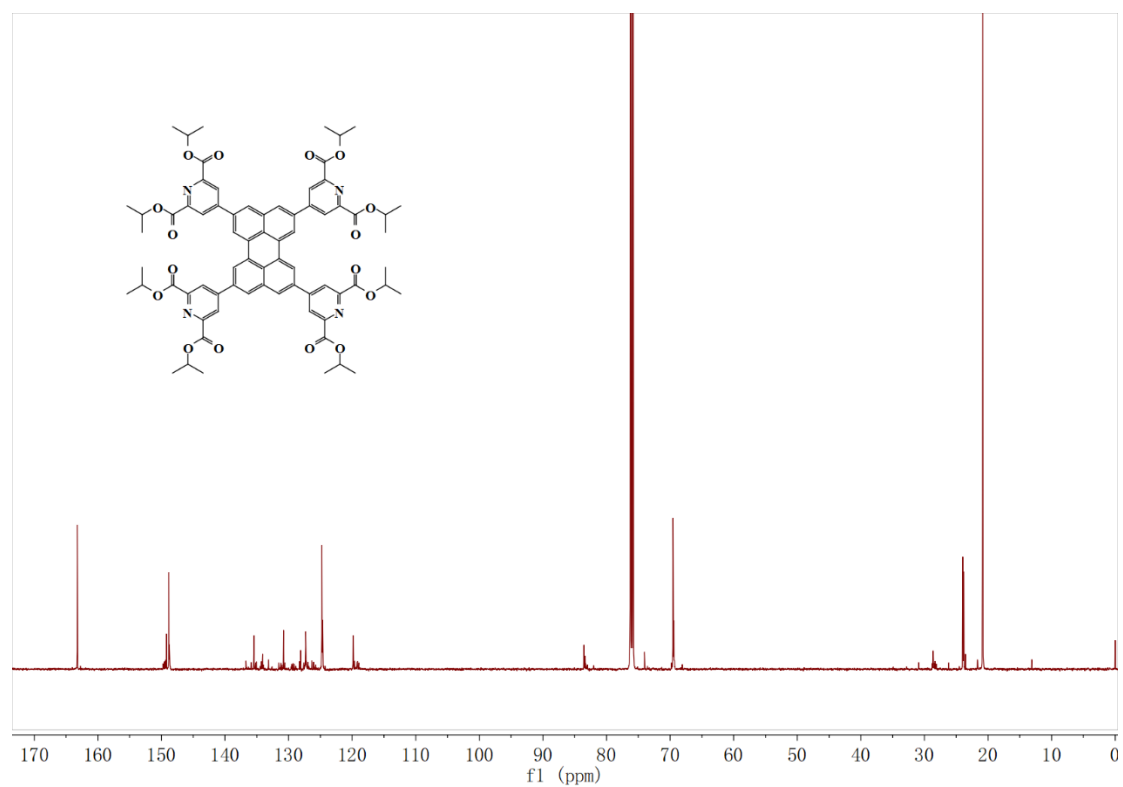
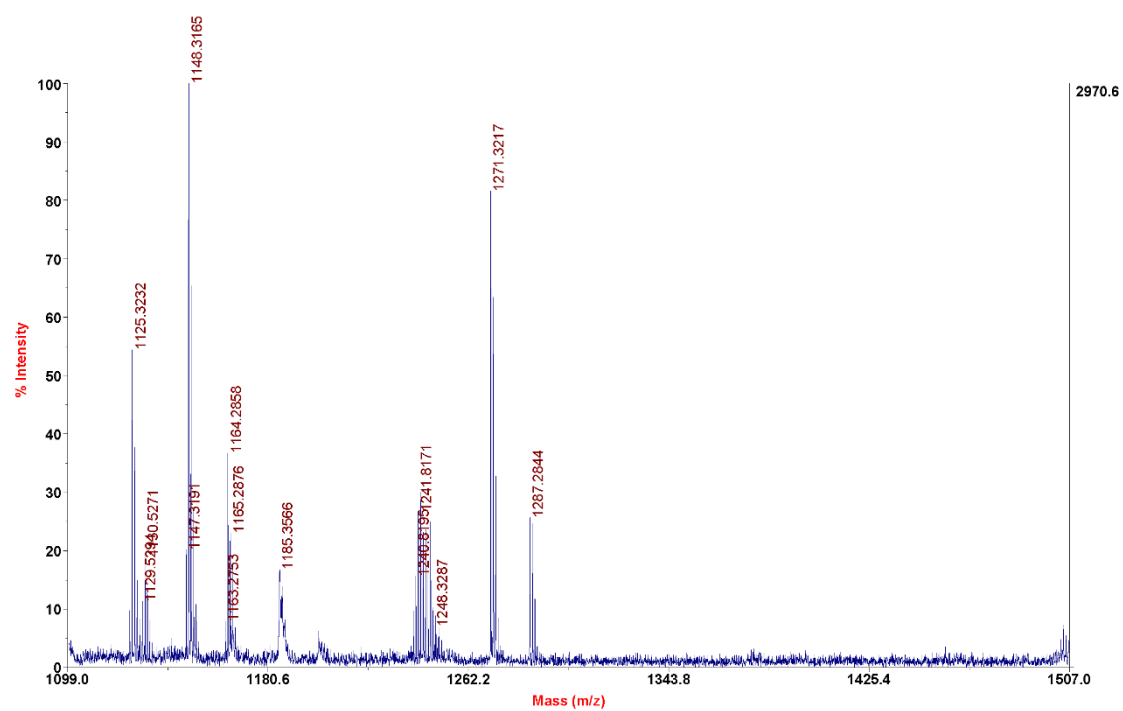


Figure S9. ^{13}C NMR spectrum of **PTPE** in CDCl_3 .



\\AK2020\Export\T2D\wt\20230728\N23_MS_212d

Printed: 15:54, July 28, 2023

Figure S10. MS (MALDI TOF) of **PTPE**.