

SUPPLEMENTARY MATERIAL

Phytochemical analysis, antioxidant and enzyme-inhibitory activities and multivariate analysis of insect gall extracts of *Picea koraiensis* Nakai

Yanqiu Wang ^{1,2,†}, Hui Sun ^{3,†}, Xu He ^{1,3}, Meihua Chen ^{1,3}, Hao Zang ^{1,3}, Xuekun Liu ^{1,3,*} and Huri Piao ^{1,*}

¹ College of Pharmacy, Yanbian University, Yanji 133000, China

² Tonghua Health School, Tonghua 134000, China

³ Green Medicinal Chemistry Laboratory, School of Pharmacy and Medicine, Tonghua Normal University, Tonghua 134002, China

* Correspondence: liuxuekunth@126.com (X.L.); piaohr@ybu.edu.cn (H.P.);

Tel.: +86-435-320-2678 (X.L.); +86-433-243-5003 (H.P.)

† These authors contributed equally to this work.

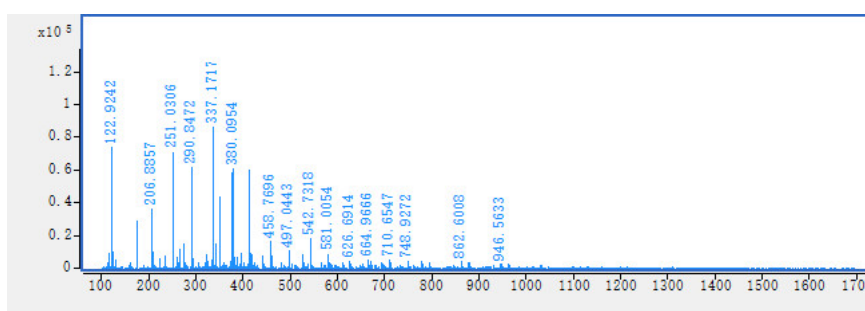


Figure S1 MS spectrum of peak 1

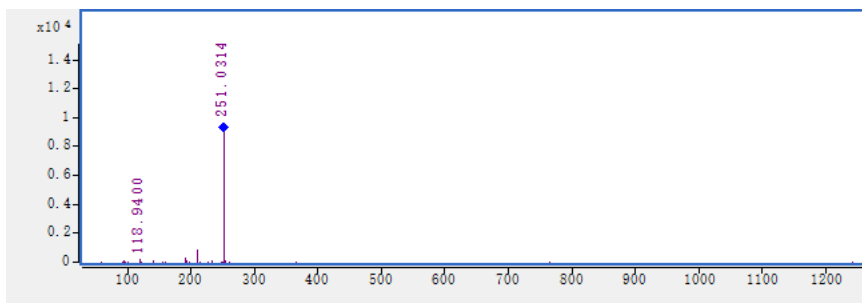


Figure S2 MS/MS spectrum of peak 1

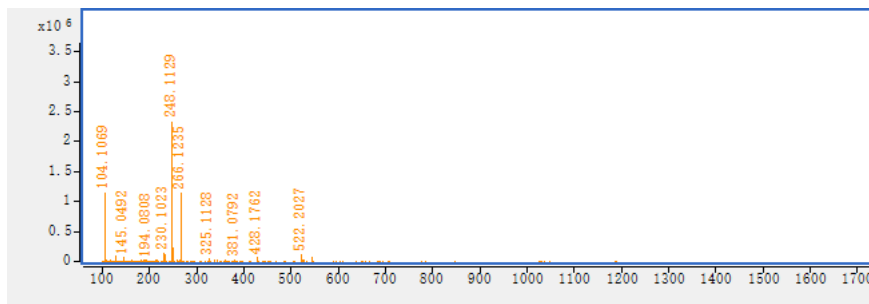


Figure S3 MS spectrum of peak 2

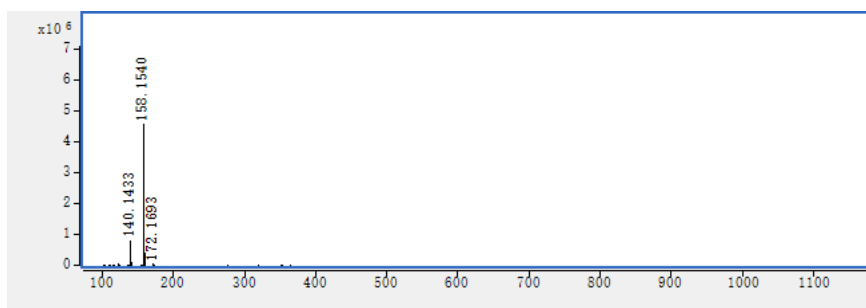


Figure S4 MS spectrum of peak 3

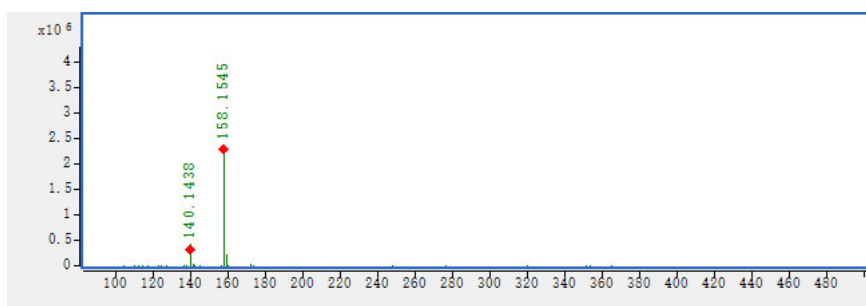


Figure S5 MS/MS spectrum of peak 3

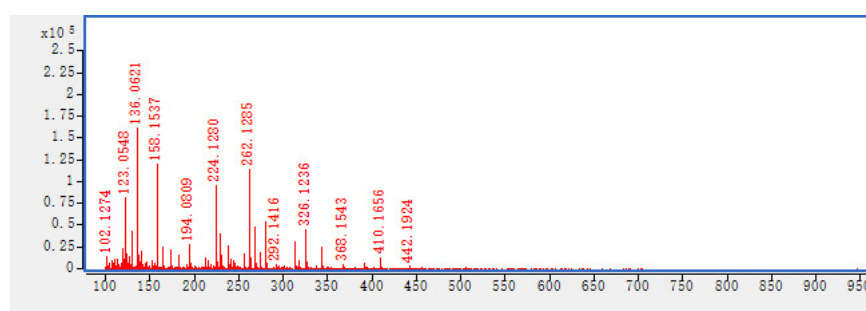


Figure S6 MS spectrum of peak 4

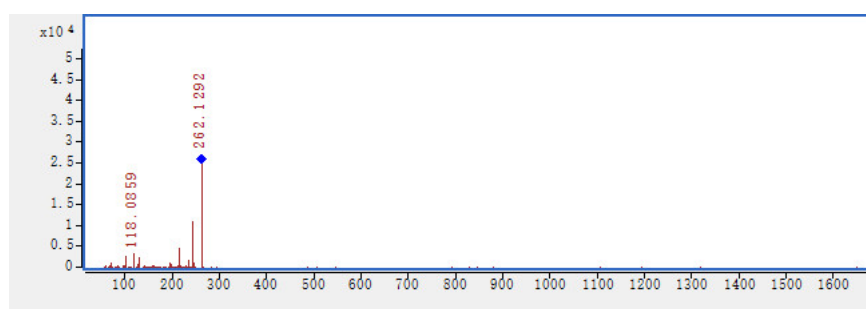


Figure S7 MS/MS spectrum of peak 4

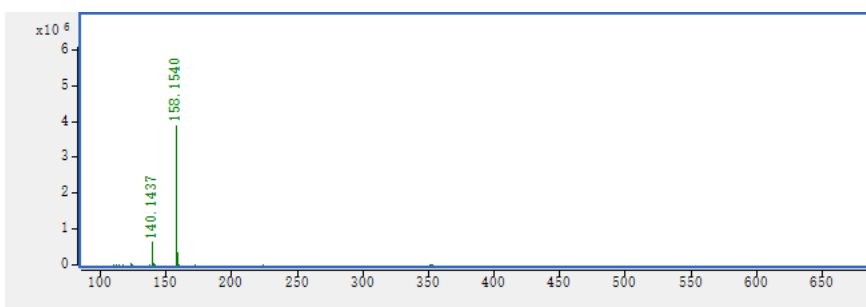


Figure S8 MS spectrum of peak 5

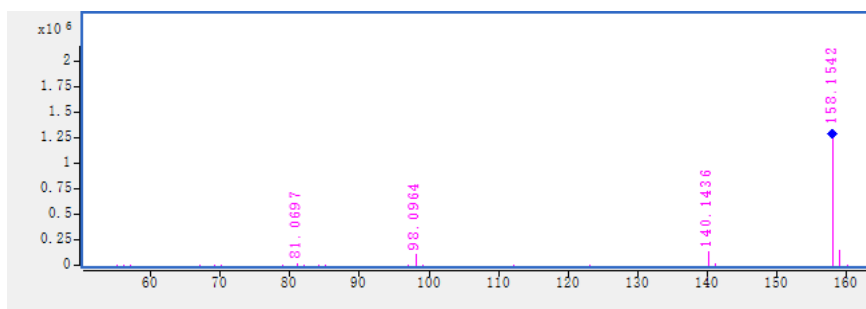


Figure S9 MS/MS spectrum of peak 5

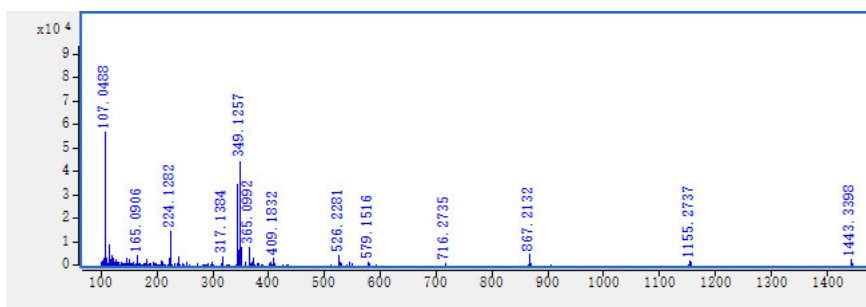


Figure S10 MS spectrum of peak 6

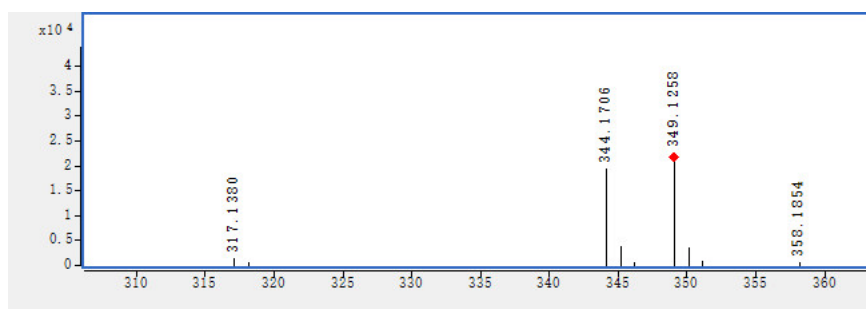


Figure S11 MS/MS spectrum of peak 6

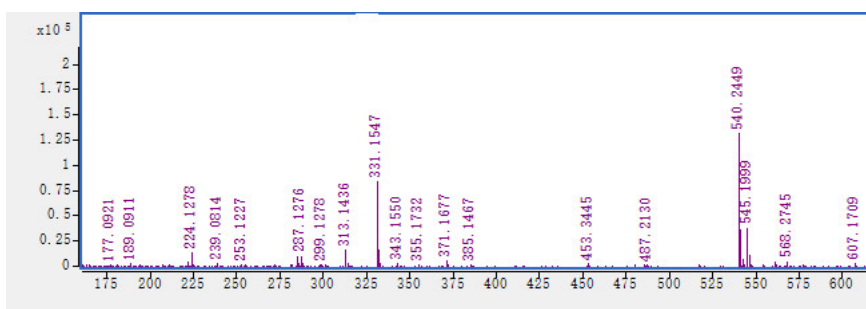


Figure S12 MS spectrum of peak 7

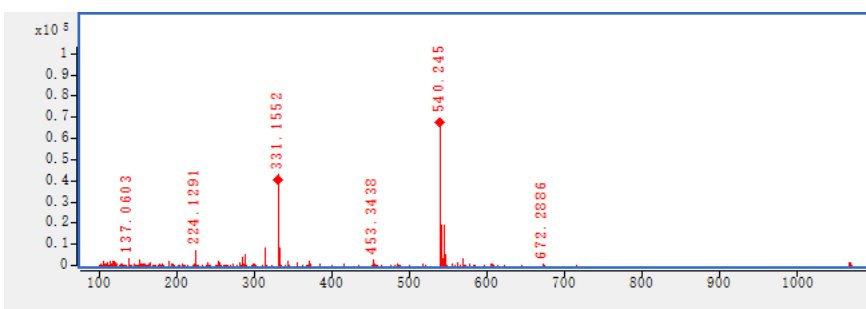


Figure S13 MS/MS spectrum of peak 7

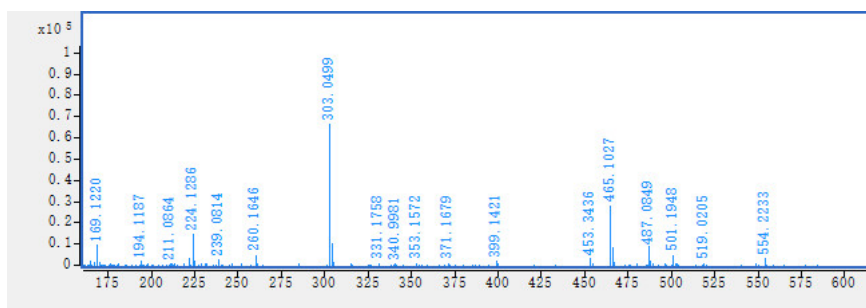


Figure S14 MS spectrum of peak 8

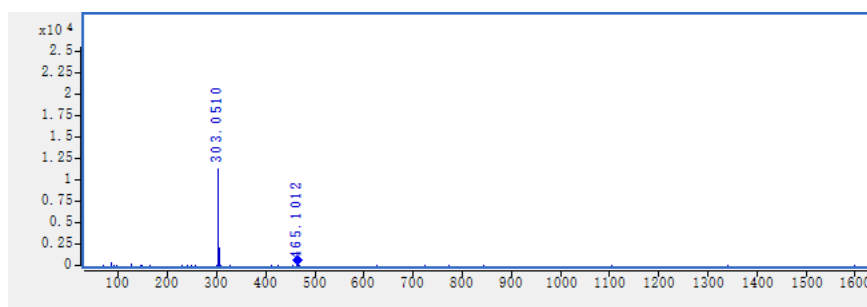


Figure S15 MS/MS spectrum of peak 8

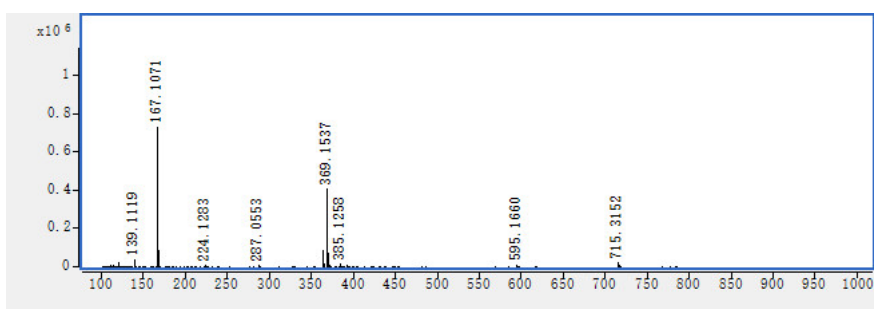


Figure S16 MS spectrum of peak 9

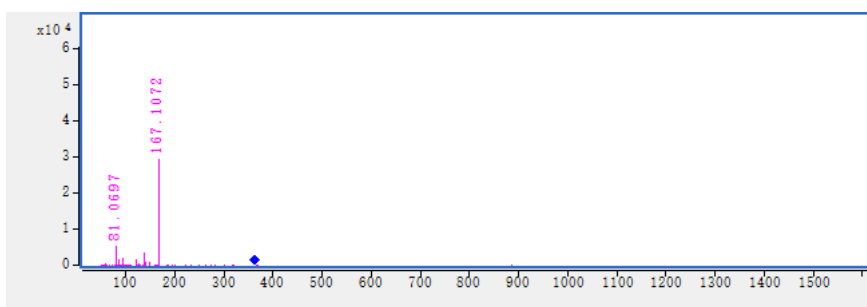


Figure S17 MS/MS spectrum of peak 9

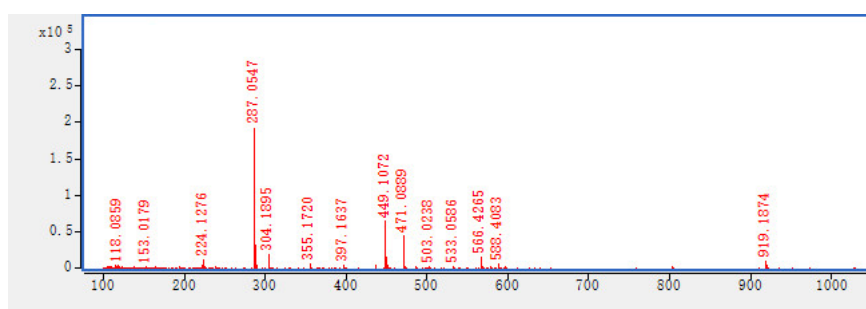


Figure S18 MS spectrum of peak 10

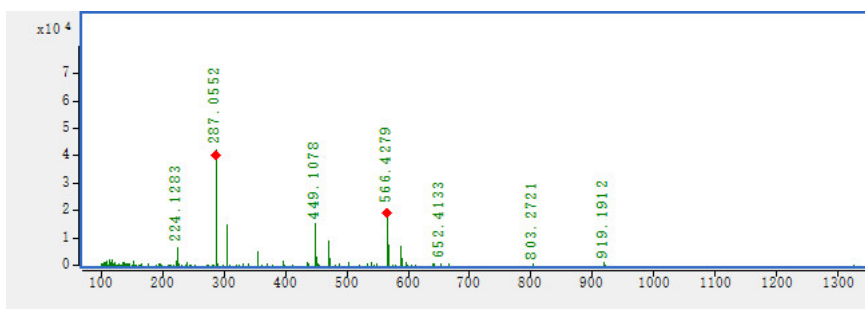


Figure S19 MS/MS spectrum of peak 10

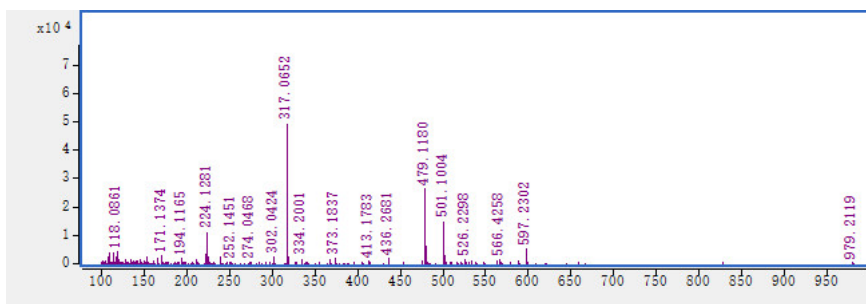


Figure S20 MS spectrum of peak 11

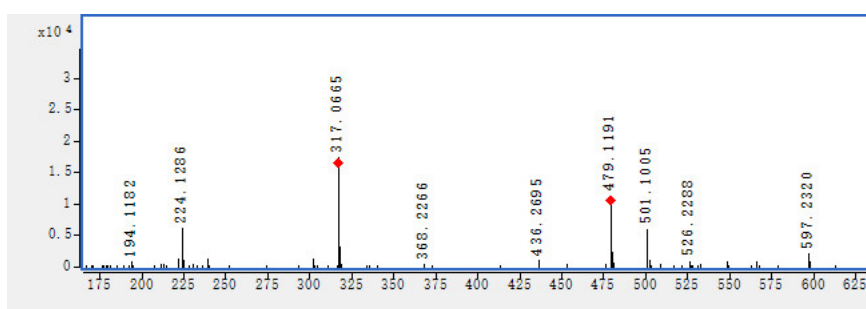


Figure S21 MS/MS spectrum of peak 11

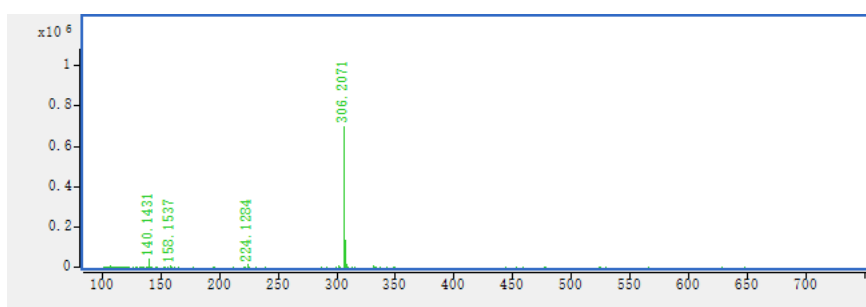


Figure S22 MS spectrum of peak 12

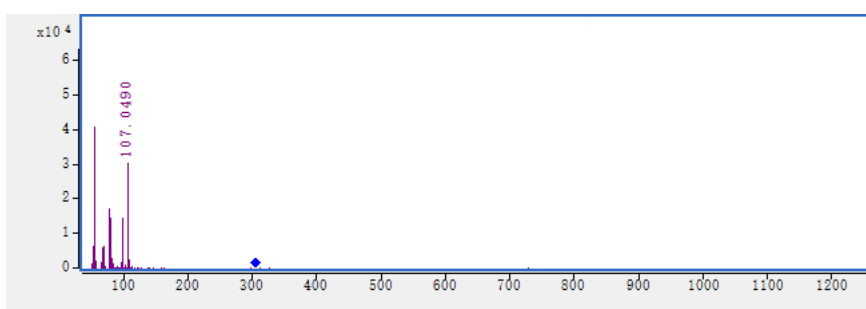


Figure S23 MS/MS spectrum of peak 12

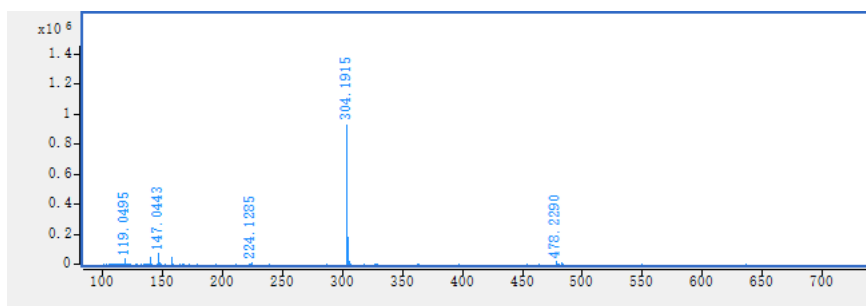


Figure S24 MS spectrum of peak 13

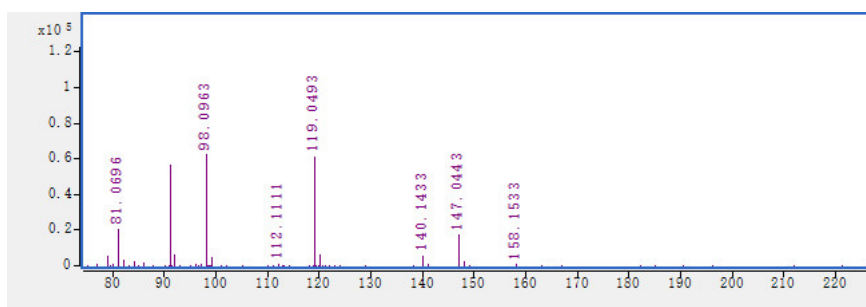


Figure S25 MS/MS spectrum of peak 13

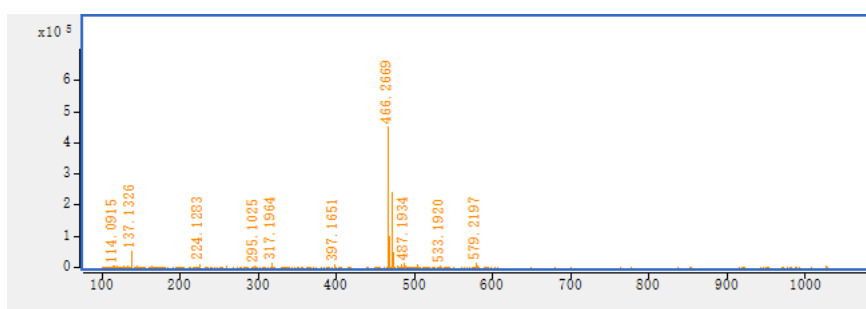


Figure S26 MS spectrum of peak 14

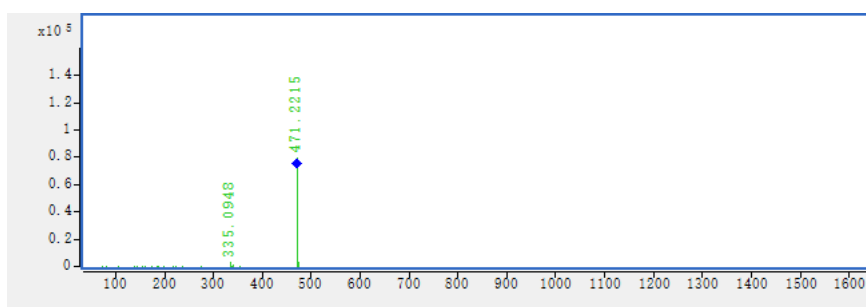


Figure S27 MS/MS spectrum of peak 14

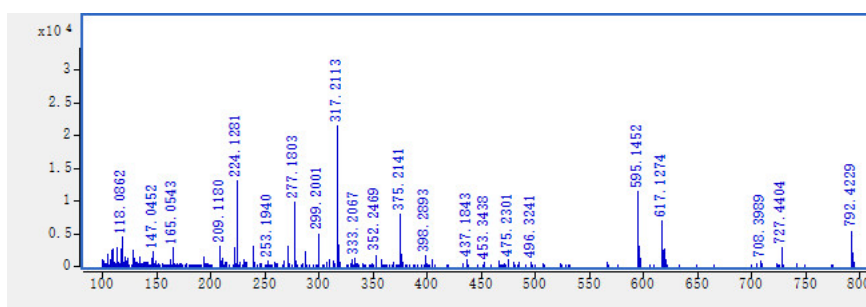


Figure S28 MS spectrum of peak 15

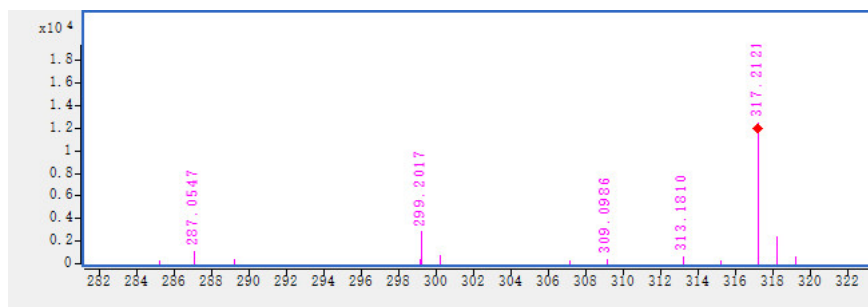


Figure S29 MS/MS spectrum of peak 15

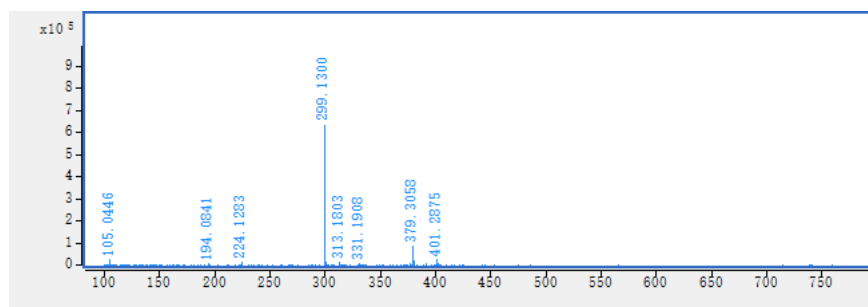


Figure S30 MS spectrum of peak 16

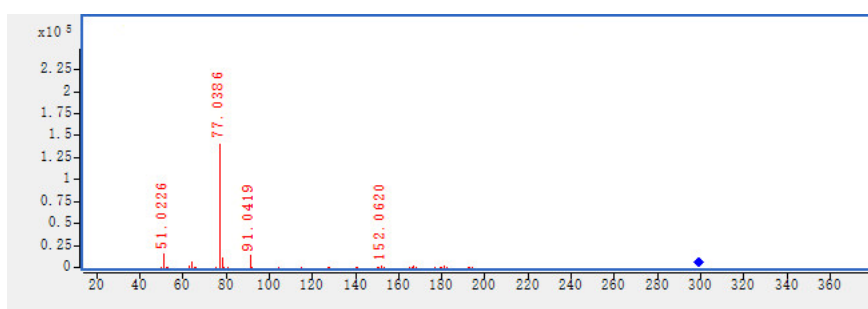


Figure S31 MS/MS spectrum of peak 16

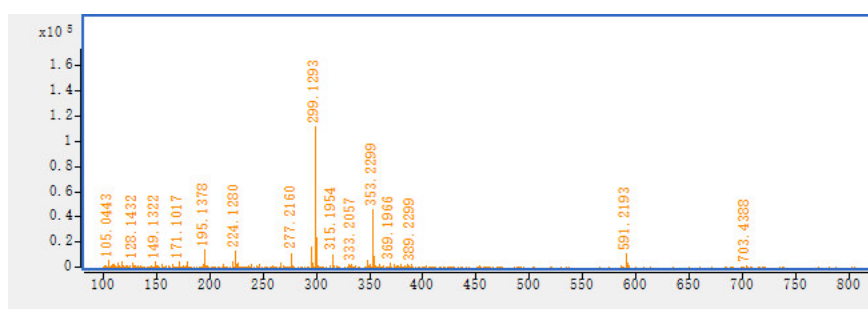


Figure S32 MS spectrum of peak 17

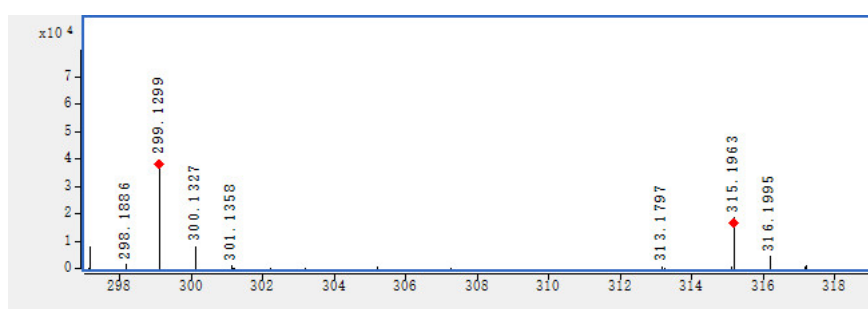


Figure S33 MS/MS spectrum of peak 17

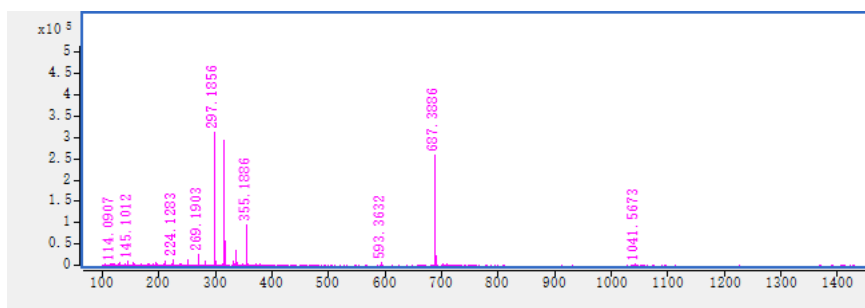


Figure S34 MS spectrum of peak 18

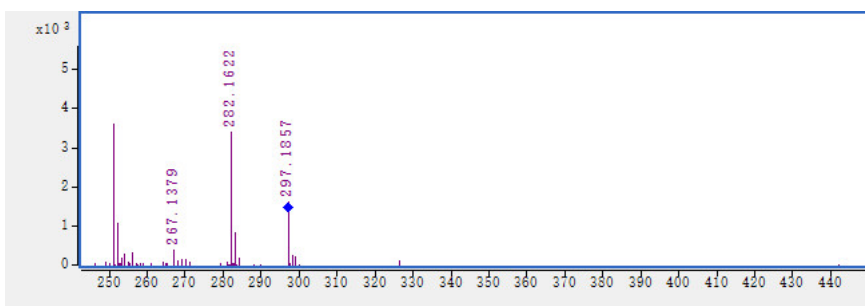


Figure S35 MS/MS spectrum of peak 18

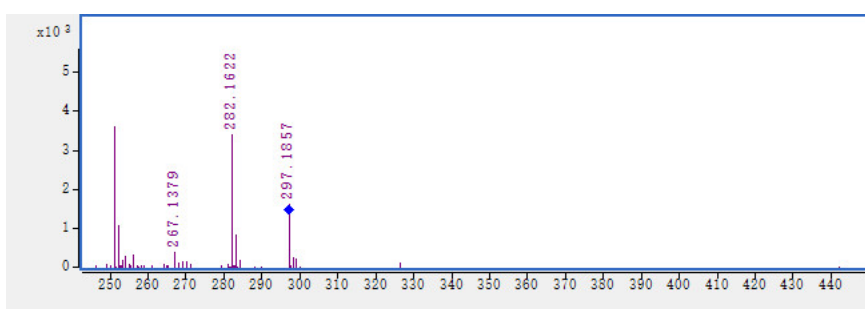


Figure S36 MS spectrum of peak 19

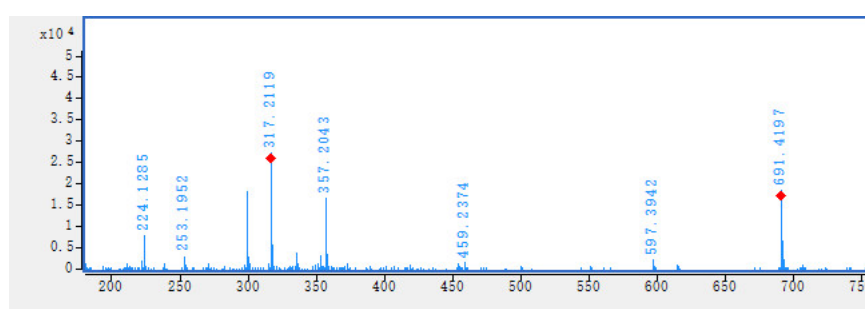


Figure S37 MS/MS spectrum of peak 19

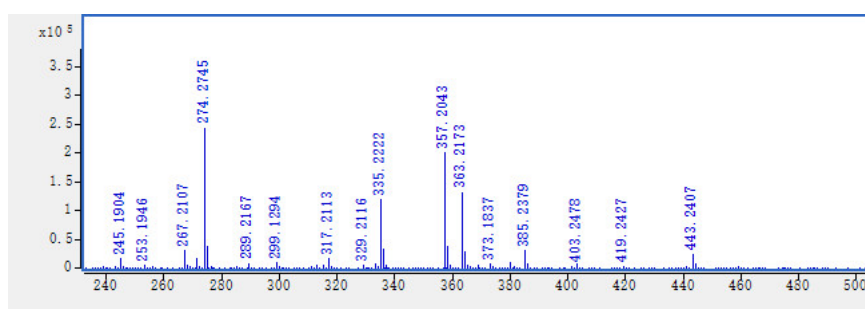


Figure S38 MS spectrum of peak 20

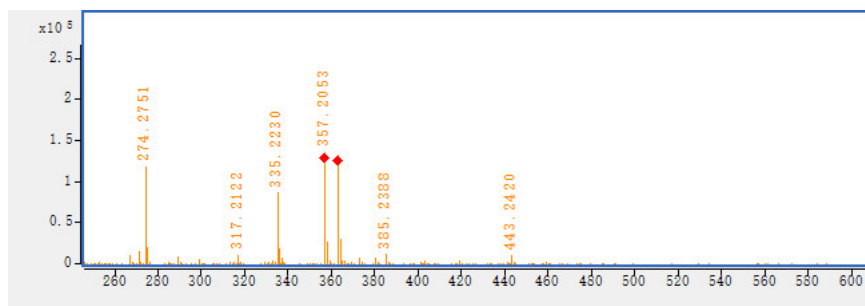


Figure S39 MS/MS spectrum of peak 20

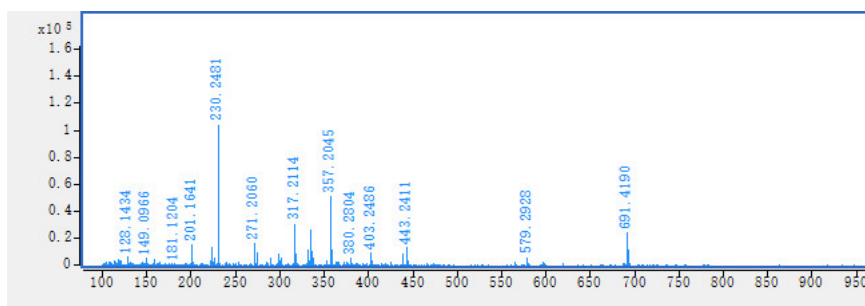


Figure S40 MS spectrum of peak 21

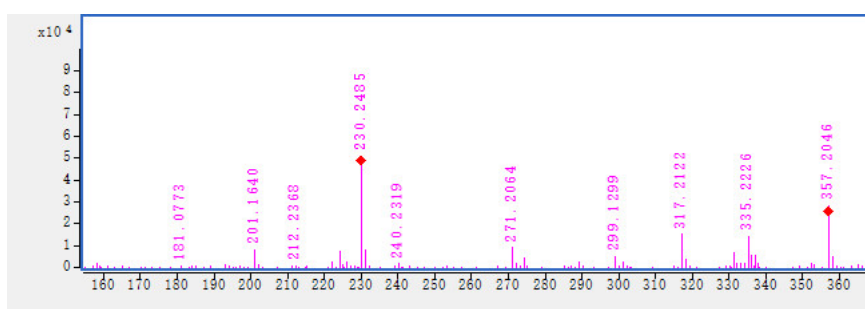


Figure S41 MS/MS spectrum of peak 21

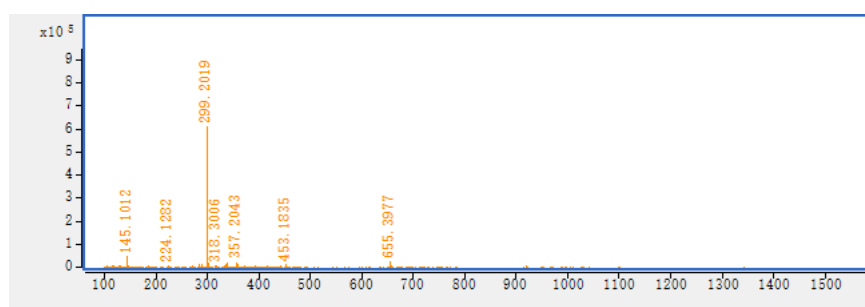


Figure S42 MS spectrum of peak 22

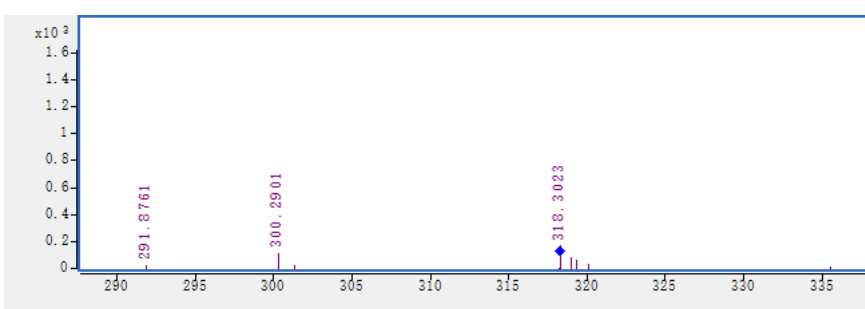


Figure S43 MS/MS spectrum of peak 22

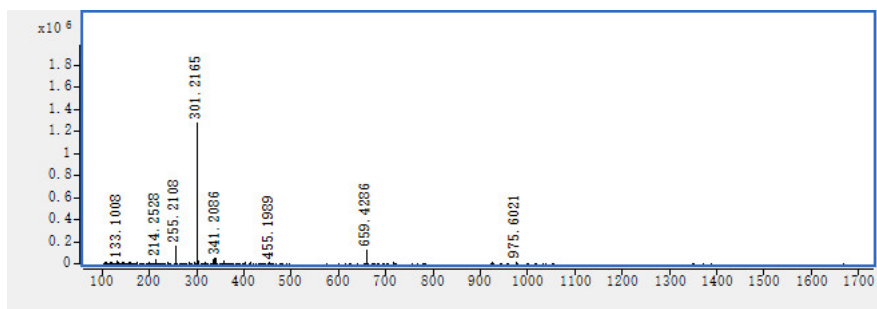


Figure S44 MS spectrum of peak 23

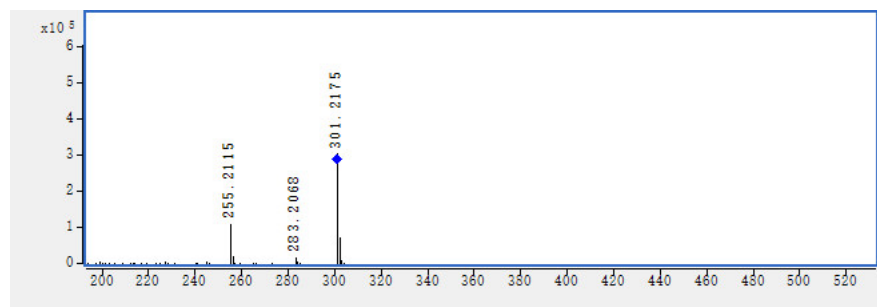


Figure S45 MS/MS spectrum of peak 23

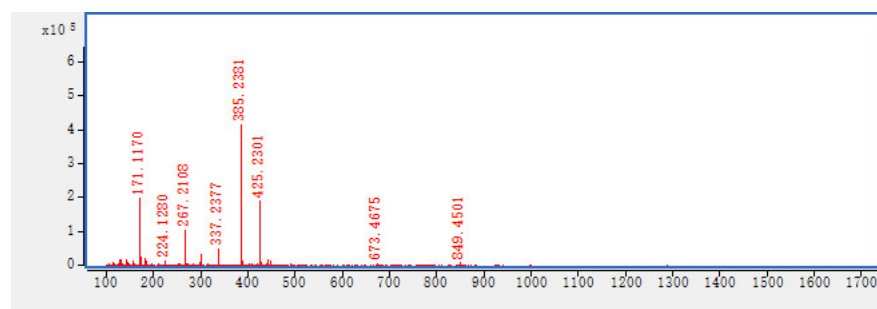


Figure S46 MS spectrum of peak 24

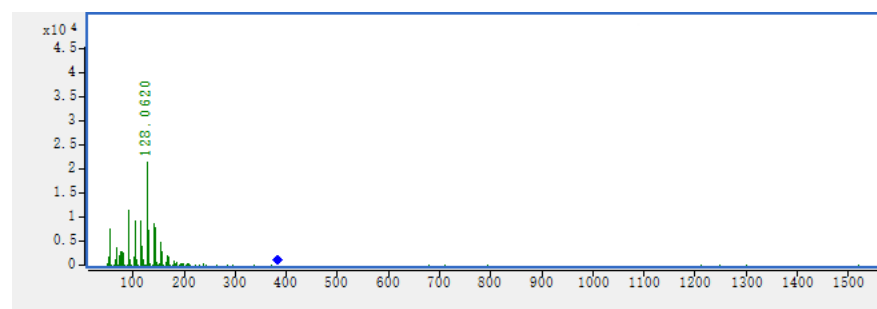


Figure S47 MS/MS spectrum of peak 24

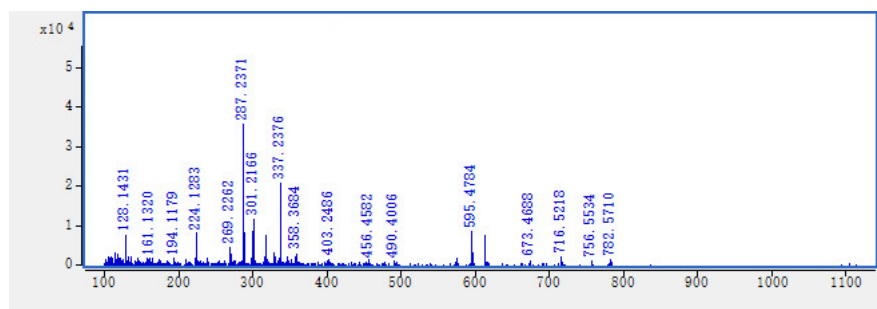


Figure S48 MS spectrum of peak 25

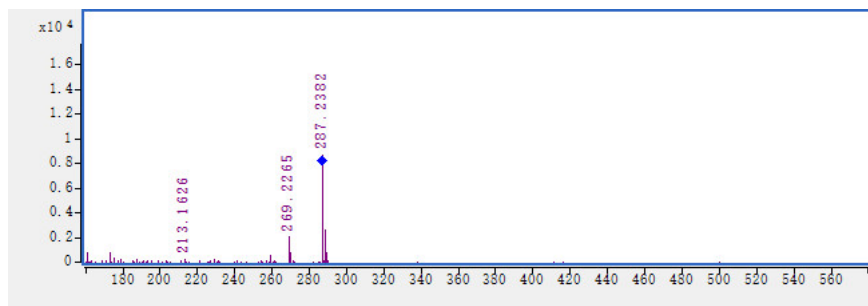


Figure S49 MS/MS spectrum of peak 25

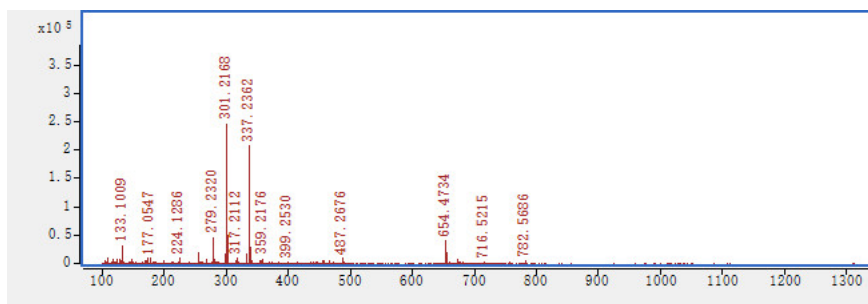


Figure S50 MS spectrum of peak 26

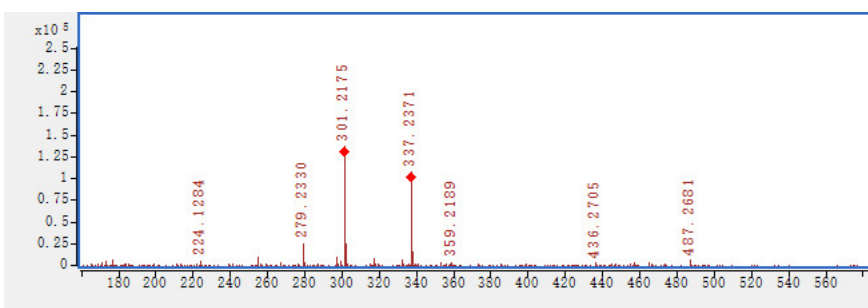


Figure S51 MS/MS spectrum of peak 26

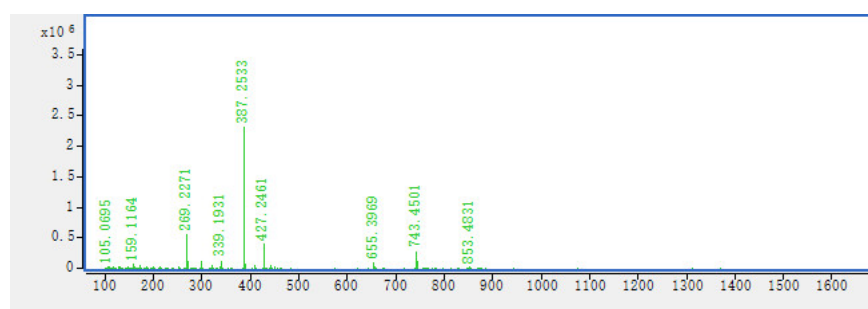


Figure S52 MS spectrum of peak 27

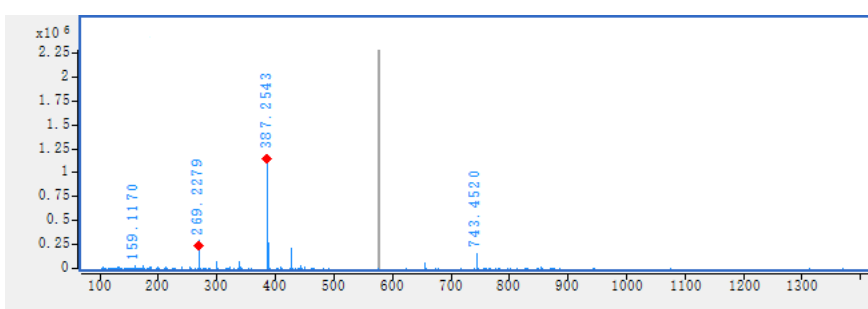


Figure S53 MS/MS spectrum of peak 27

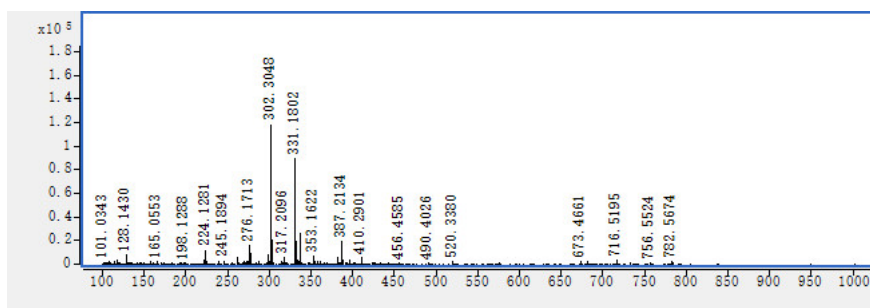


Figure S54 MS spectrum of peak 28

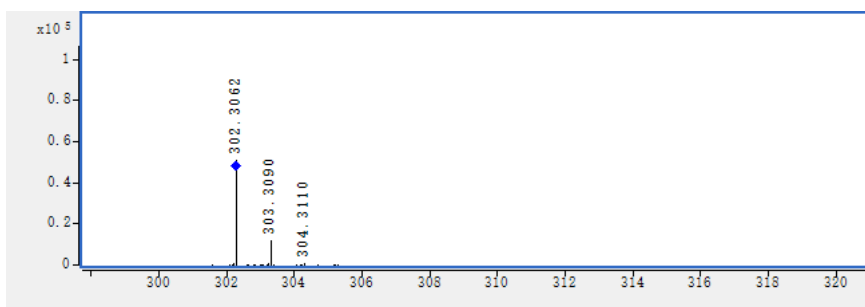


Figure S55 MS/MS spectrum of peak 28

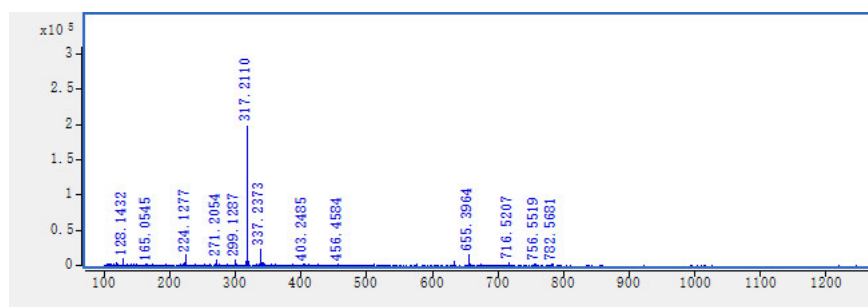


Figure S56 MS spectrum of peak 29

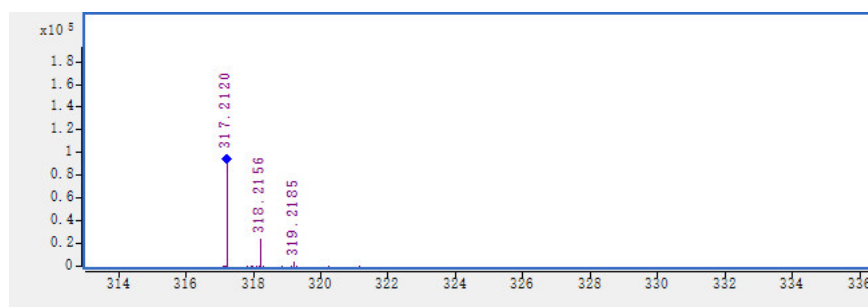


Figure S57 MS/MS spectrum of peak 29

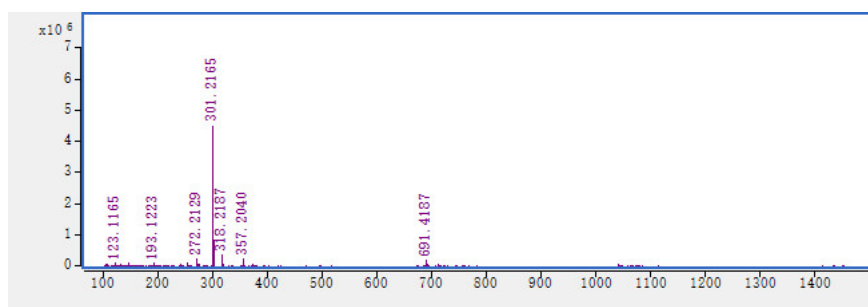


Figure S58 MS spectrum of peak 30

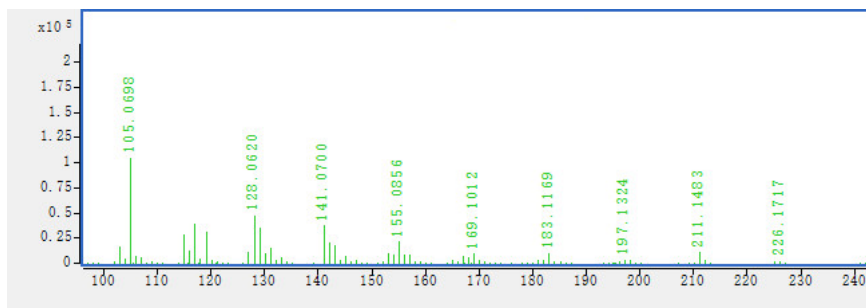


Figure S59 MS/MS spectrum of peak 30

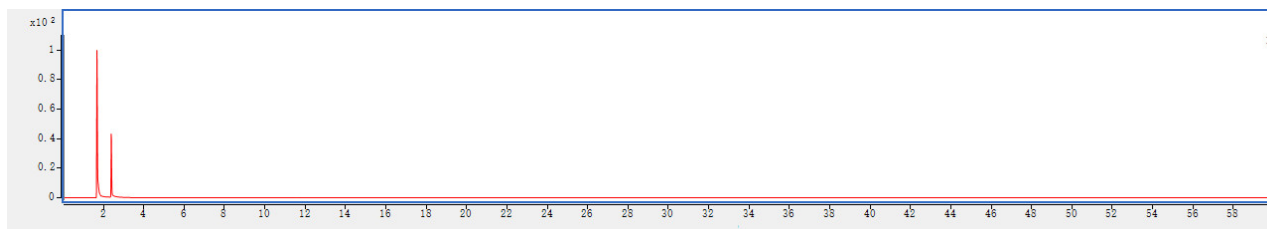


Figure S60 UPLC-MS results captured in positive-ion mode for adenine

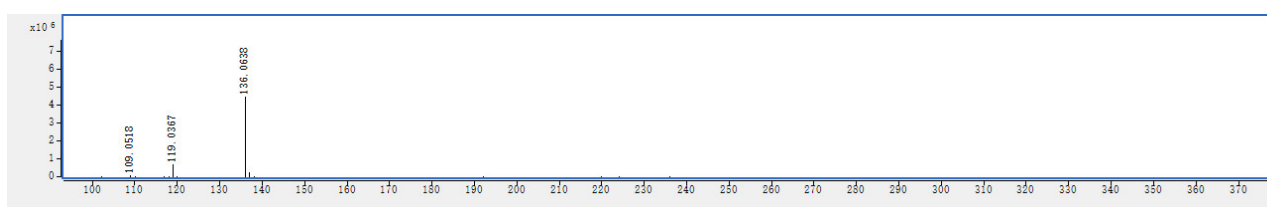


Figure S61 MS spectrum of adenine

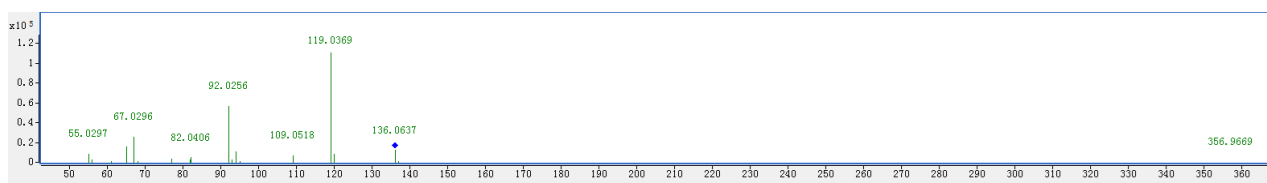


Figure S62 MS/MS spectrum of adenine

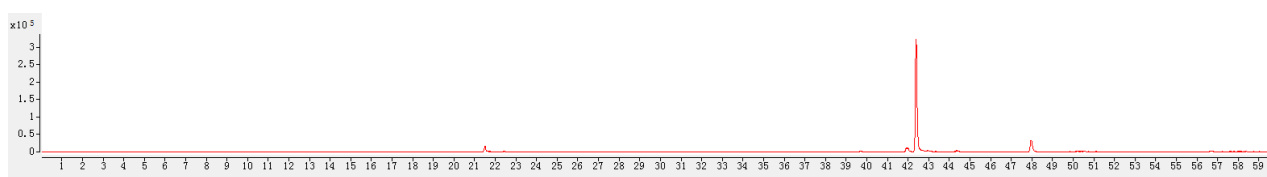


Figure S63 UPLC-MS results captured in positive-ion mode for phytosphingosine

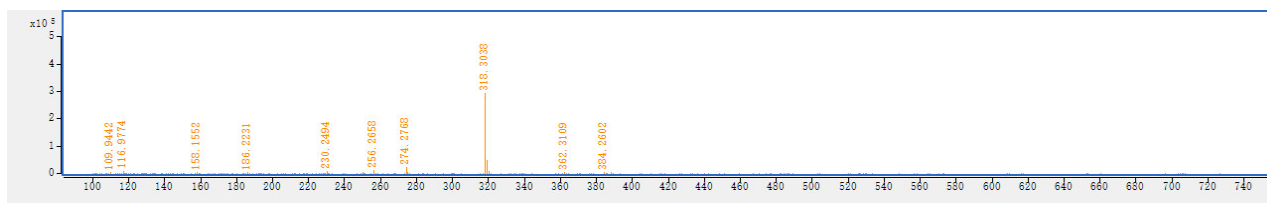


Figure S64 MS spectrum of phytosphingosine

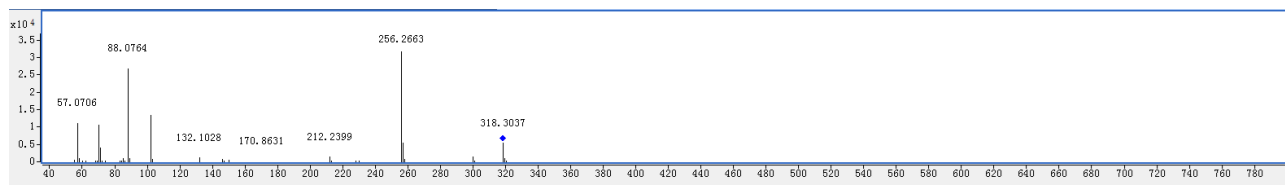


Figure S65 MS/MS spectrum of phytosphingosine

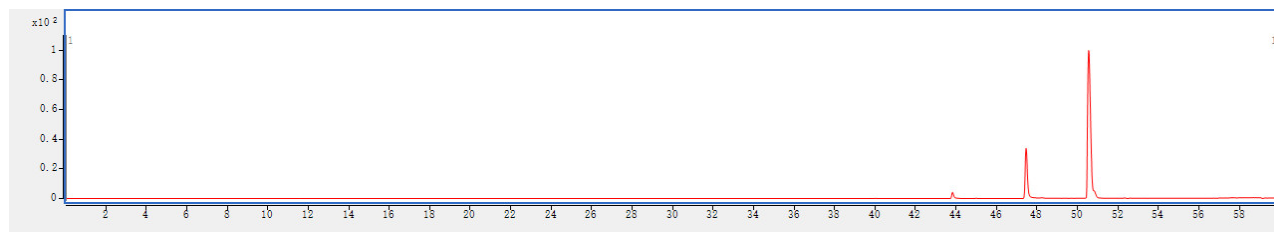


Figure S66 UPLC-MS results captured in positive-ion mode for sphinganine

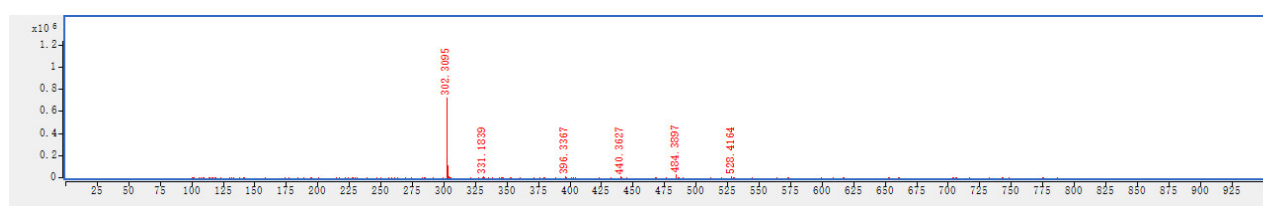


Figure S67 MS spectrum of sphinganine

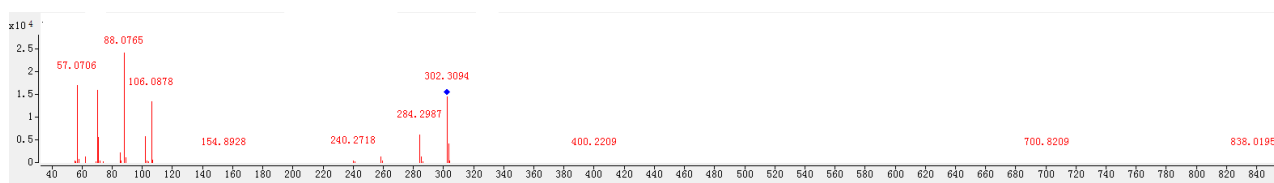


Figure S68 MS/MS spectrum of sphinganine

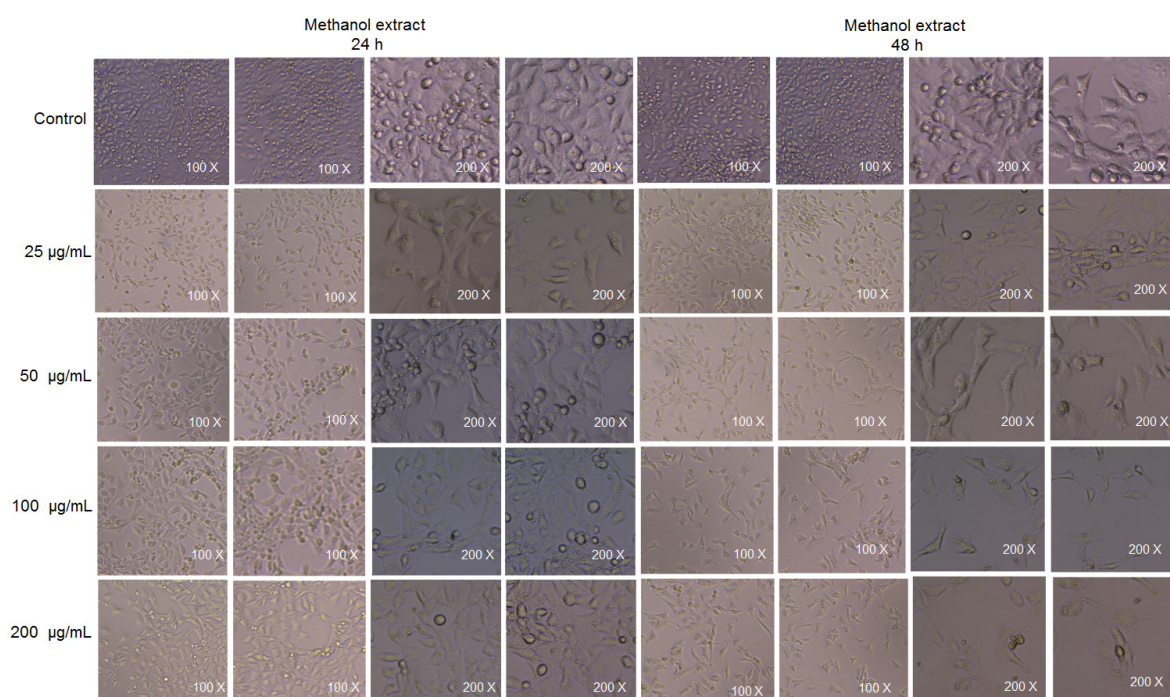


Figure S69 Morphology of TM₃ mouse cells treated with methanol extract of insect gall of *Picea koraiensis* for 24 or 48 h

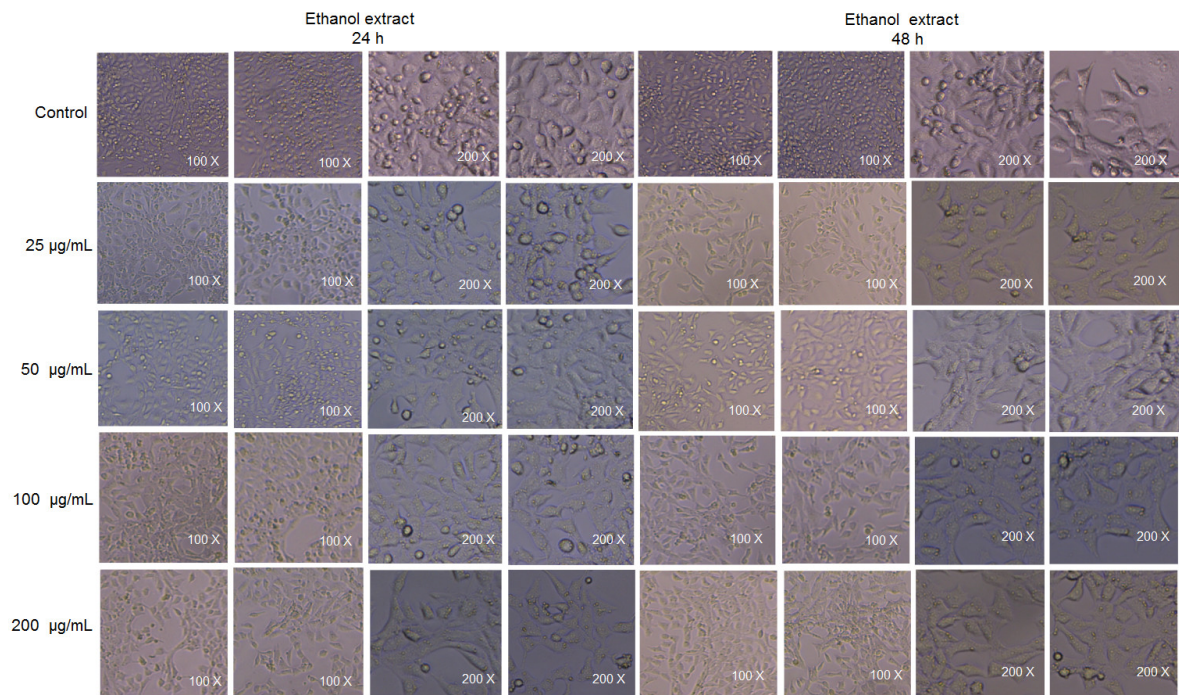


Figure S70 Morphology of TM₃ mouse cells treated with ethanol extract of insect gall of *Picea koraiensis* for 24 or 48 h.