

Supplementary Material

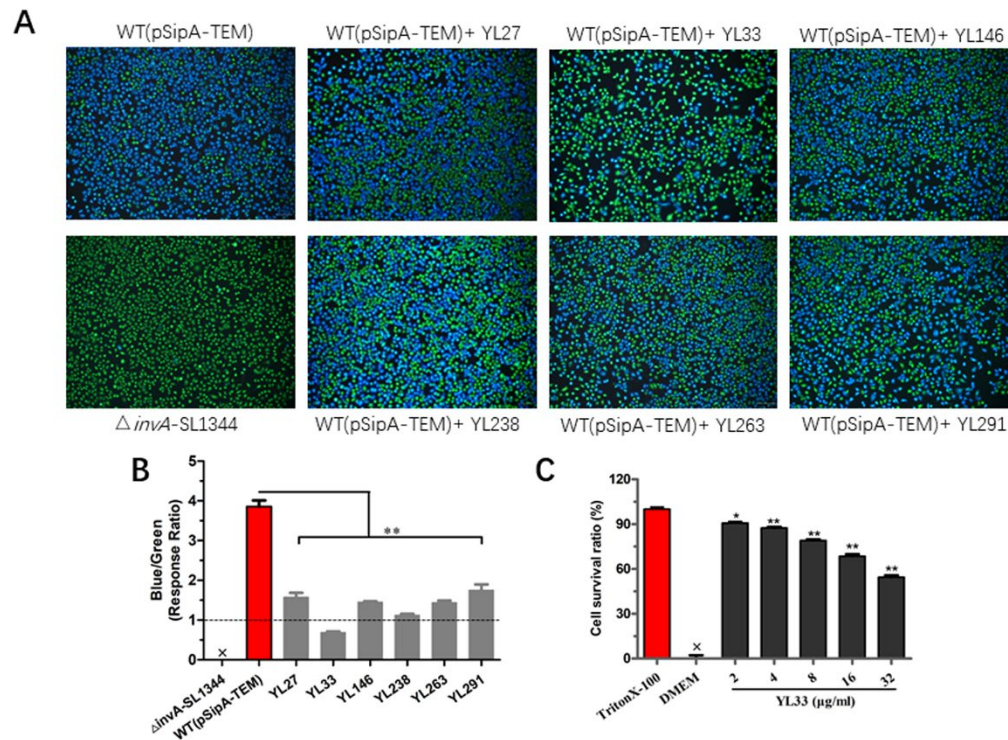


FIG S1 Candidate compounds screened by SipA- β -lactamase fusion reporting system and pharmacological activity analysis. (A) Fluorescence images of six compounds screened. (B) Quantitative data of six compounds inhibiting the translocation of effector SipA were collected for statistical analysis of blue/green ratio (=response ratio) from five different visual fields. The response ratio should be at least less than 1.0, meeting the baseline requirements. (C) Cytotoxicity of YL-33 on HeLa cells at different concentrations. * $p < 0.05$; ** $p < 0.01$ compared to the control group; \times , $\Delta invA$ -SL1344 group was not counted.

Table S1 The primers used in this experiment.

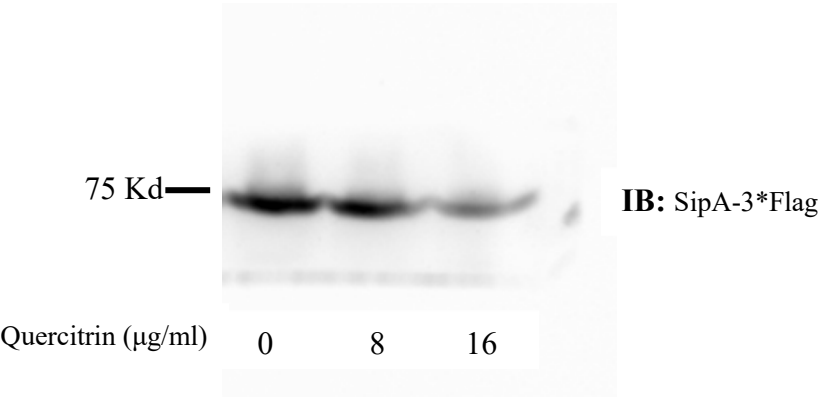
| Primer name | Sequence (Restriction enzyme sites are underlined) | Note |
|-------------|--|--|
| SL1101 | GTC <u>GAGCTC</u> GTGGTCACGTCAGAAAAGGGCA | <i>sipA</i> up Sac I Knock-in 3*flag |
| SL1102 | TCCCCCGGGACGCTGCATGTGCAAGCCATCAACG | <i>sipA</i> up Sma I Knock-in 3*flag |
| SL1103 | CGCCTCGAGTAATTAACCGGGAAAGATGCGATGA | <i>sipA</i> down Sac I Knock-in 3*flag |
| SL1104 | CATGGTACCGTTCACCATTAAATCACCATAA | <i>sipA</i> down Sma I Knock-in 3*flag |
| SL1105 | CTTGTCGACGTTTACCATTAAATCACCATAA | <i>sipA</i> down Sal I Knock-in 3*flag |

Table S2 The absolute number of intracellular bacteria.

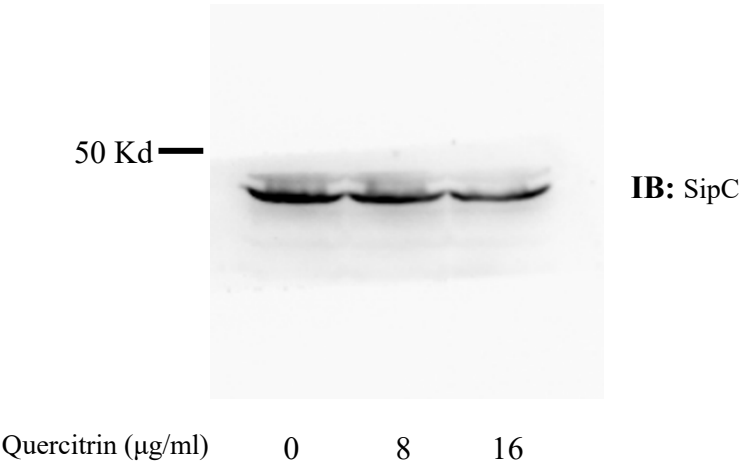
| Repeats | WT (CFUs) | WT+ Quercitrin (µg/ml) | | | |
|---------|--------------|------------------------|-------------|--------------|--------------|
| | | 4 (CFUs) | 8 (CFUs) | 16 (CFUs) | 32 (CFUs) |
| 1 | 243000 | 115000 | 92000 | 75000 | 44000 |
| 2 | 199000 | 138000 | 89000 | 59000 | 36000 |
| 3 | 185000 | 116000 | 95000 | 64000 | 32000 |

Gels and blots images of Figure 5A

(1) SipA-3×Flag



(2) SipC



(3) ICDH

