

Supplementary material

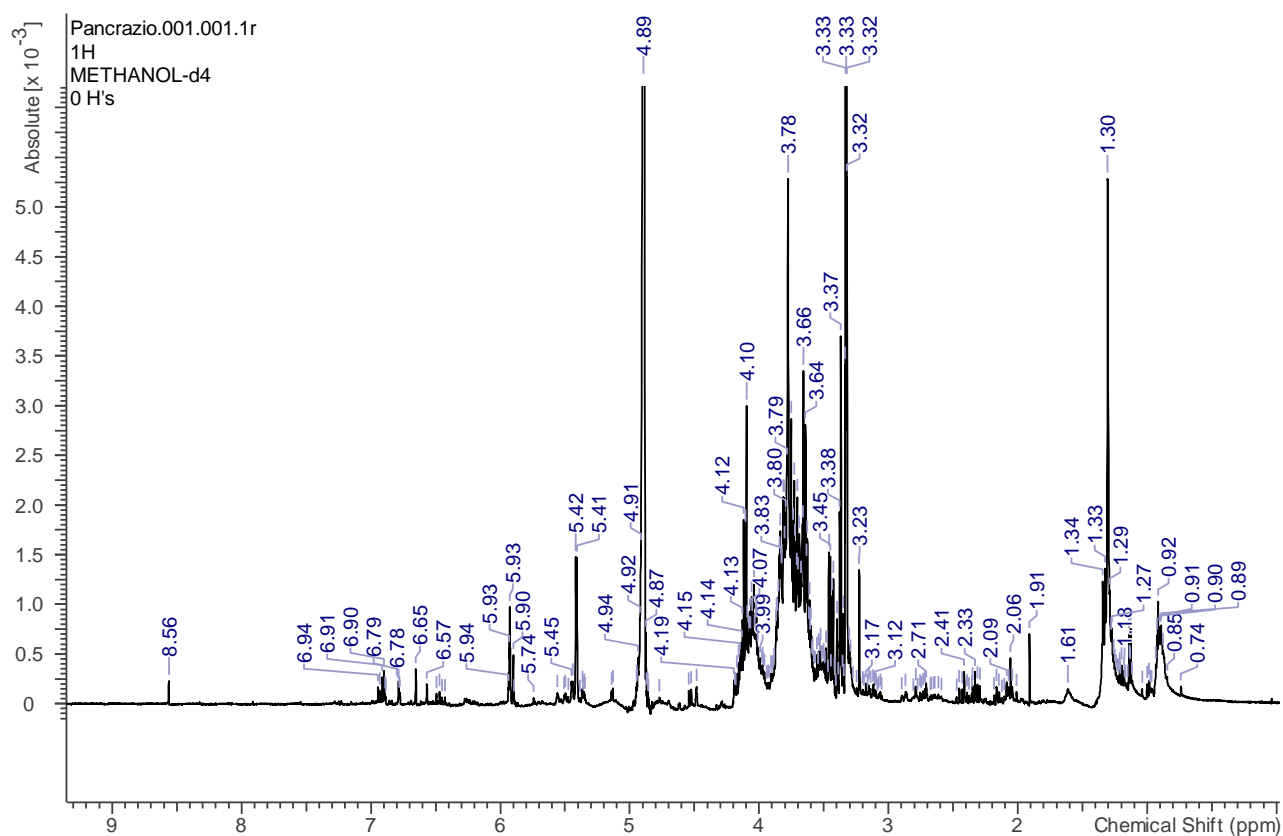


Figure S1: ^1H -NMR of *Pancratium* bulb extract.

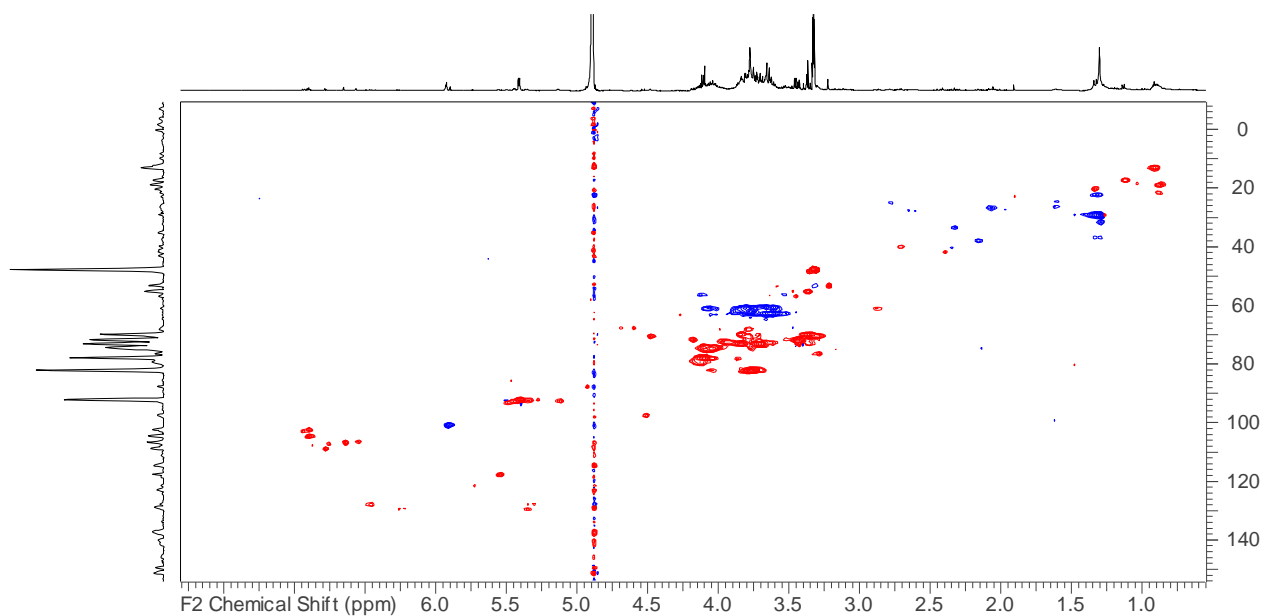


Figure S2: HSQC-DEPT of *Pancratium* bulb extract.

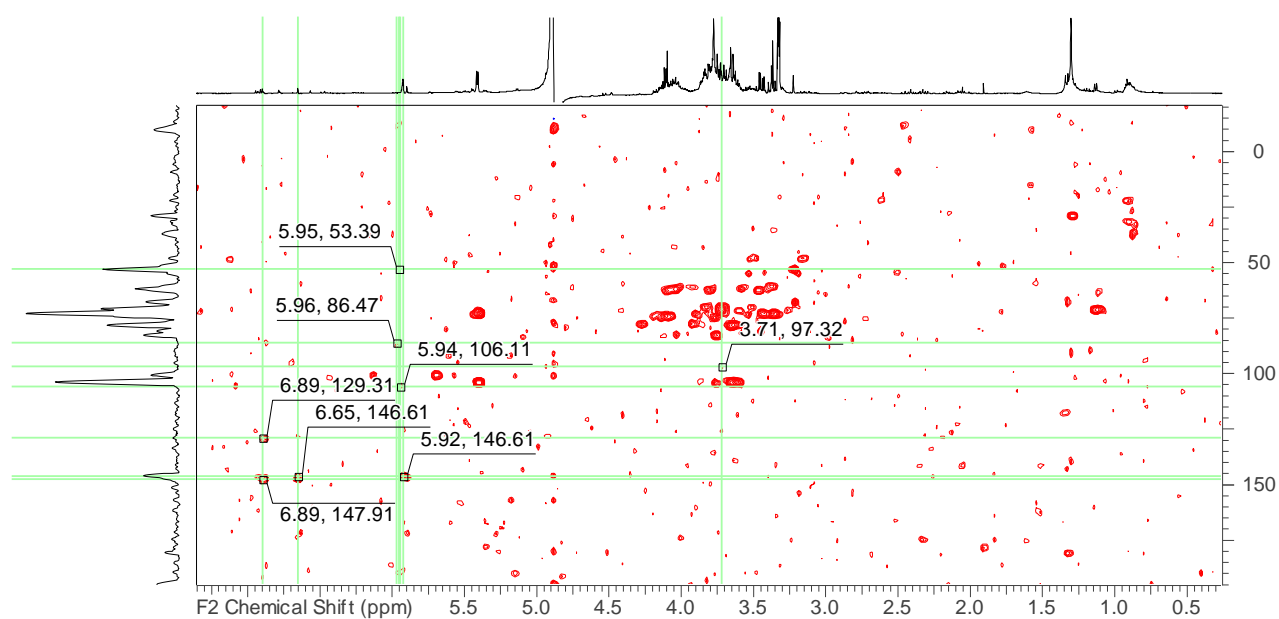


Figure S3: HMBC of *Pancratium* bulb extract.

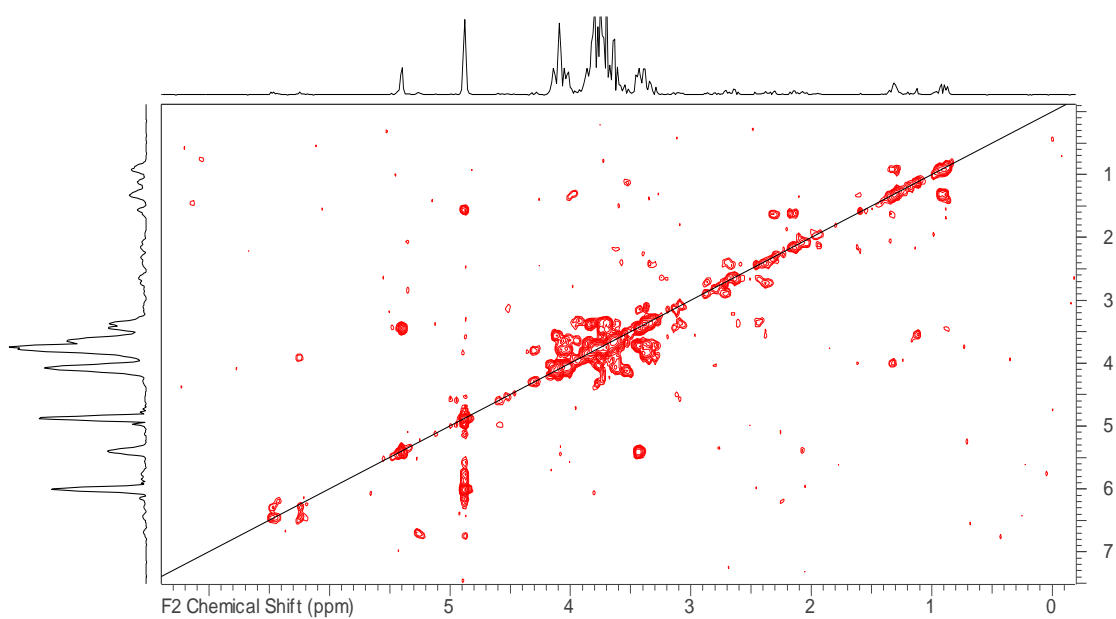


Figure S4: COSY of *Pancratium* bulb extract.

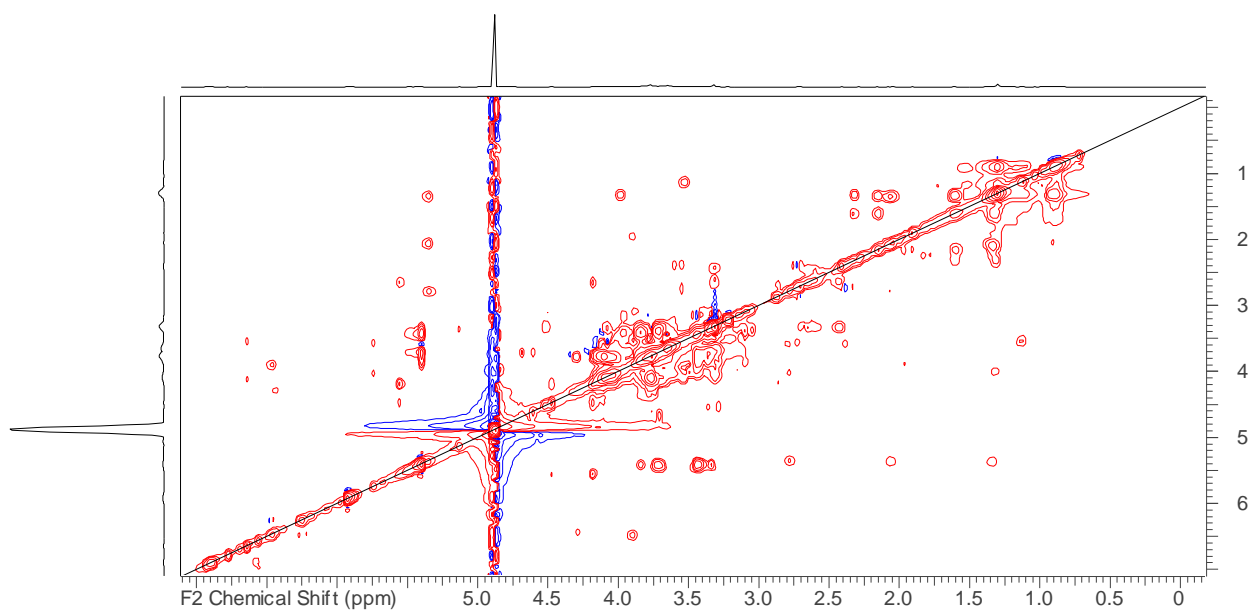


Figure S5: TOCSY of *Pancratium* bulb extract.

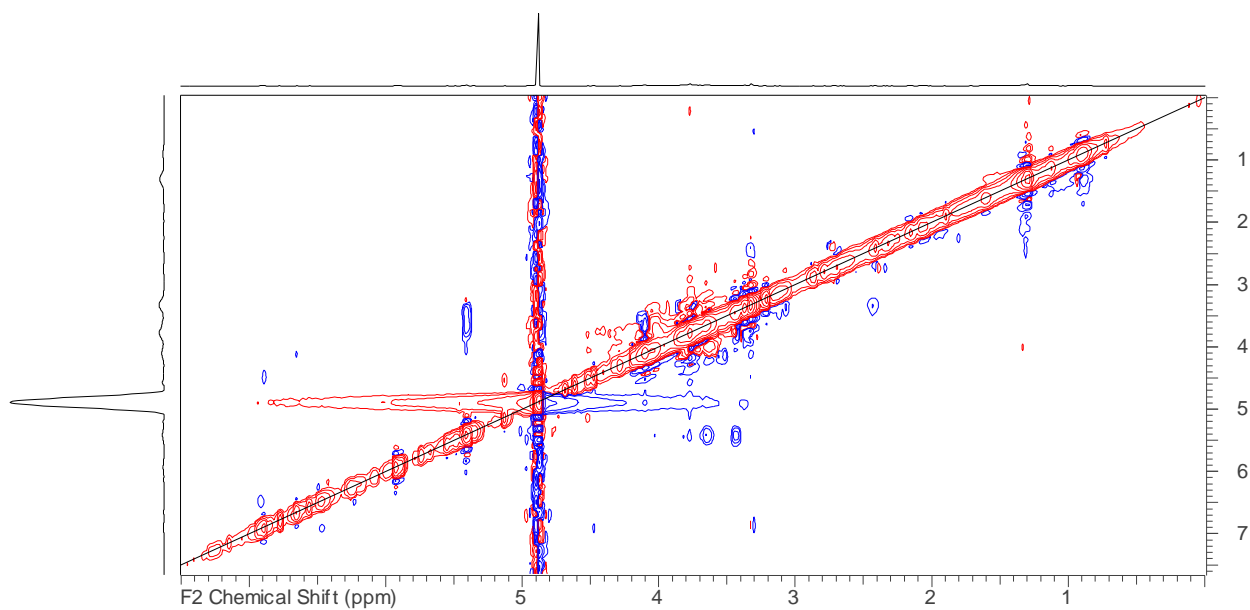


Figure S6: NOESY of *Pancratium* bulb extract.

Table S1: Principal assignments of identified alkaloids in Bulb extract as obtained from NMR spectra.

Lycorin type	F2 (ppm)	F1 (ppm)	HMBC	COSY/TOCSY	NOESY
1	4.57	70.51			6.98
2	4.27	71.78			
3	5.64	117.73			
4	2.42	33.72		3.32	
5	3.32	52.97		3.32	
7	3.46	55.45			
8	6.74	107.08			
11b	2.96	60.98			
11	6.98	104.85	147.9		4.57
12	6.02	101.07	147.9		
Crinamidine type					
1	3.77	56.2			6.56
2	3.26	53.3		4.46	
3	4.46	70.8		3.26	
6	4.19-3.53	56.4			
10	6.56	103.5			
12	3.31-2.43	53.1			
Oduline/Lycorenine type					
6	5.93	97.10		125.1	
N-CH3	2.30	44.3			
3	5.53	117.3		3.18	

LC-MS data chromatograms and MS fragmentation spectras

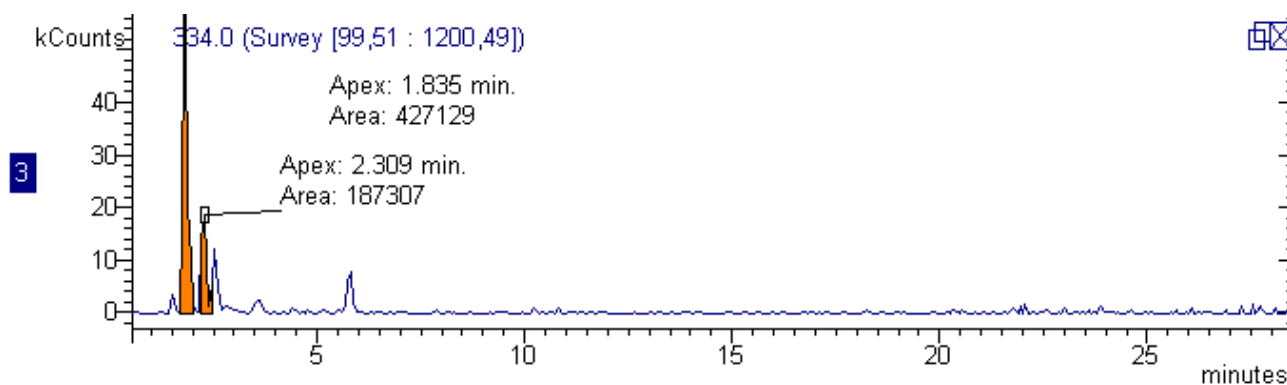


Figure S7: chromatogram related to specie at m/z 334.

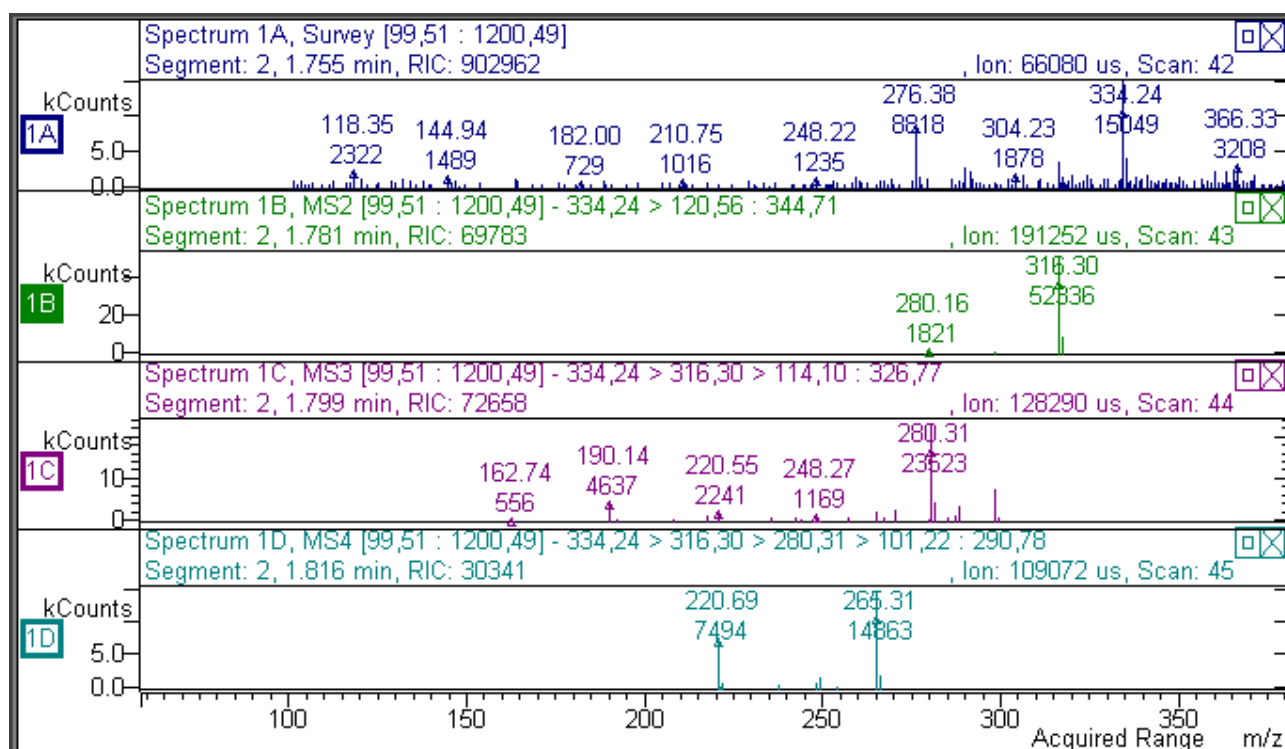


Figure S8: specie at m/z 334, RT 1.7 min.

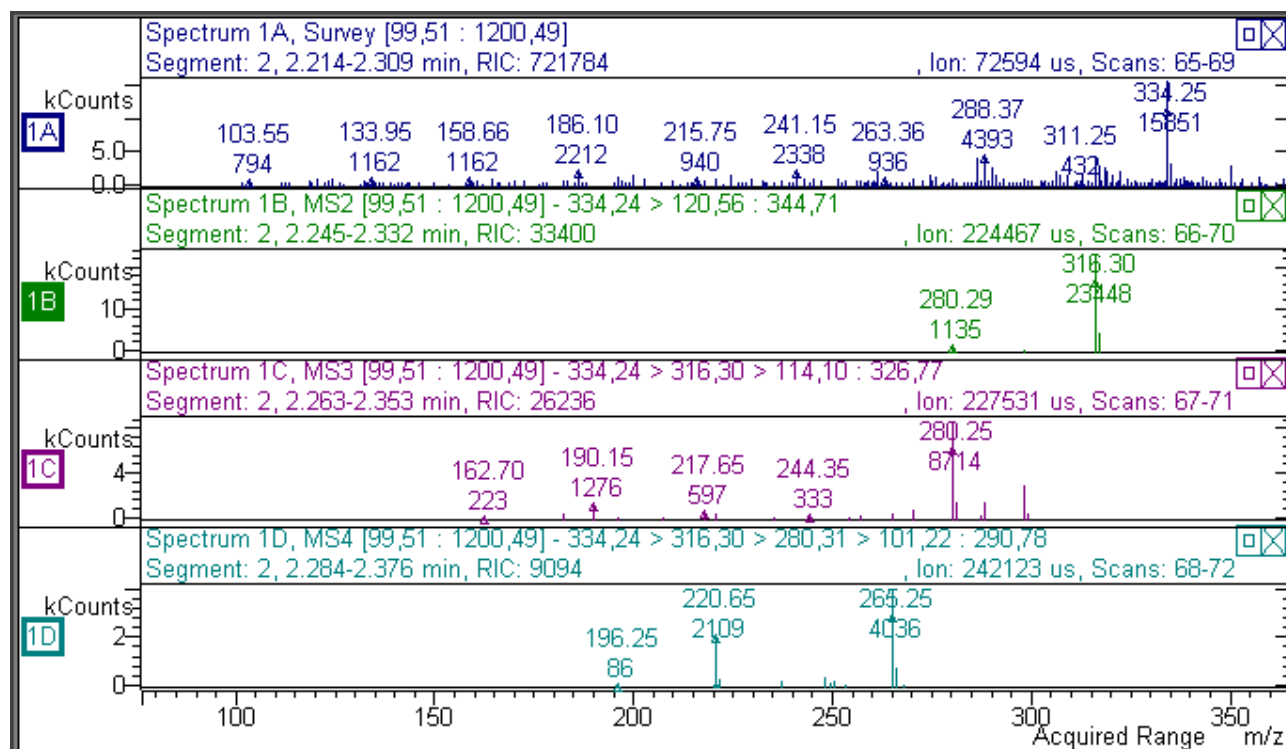


Figure S9: specie at m/z 334, RT 2,3 min.

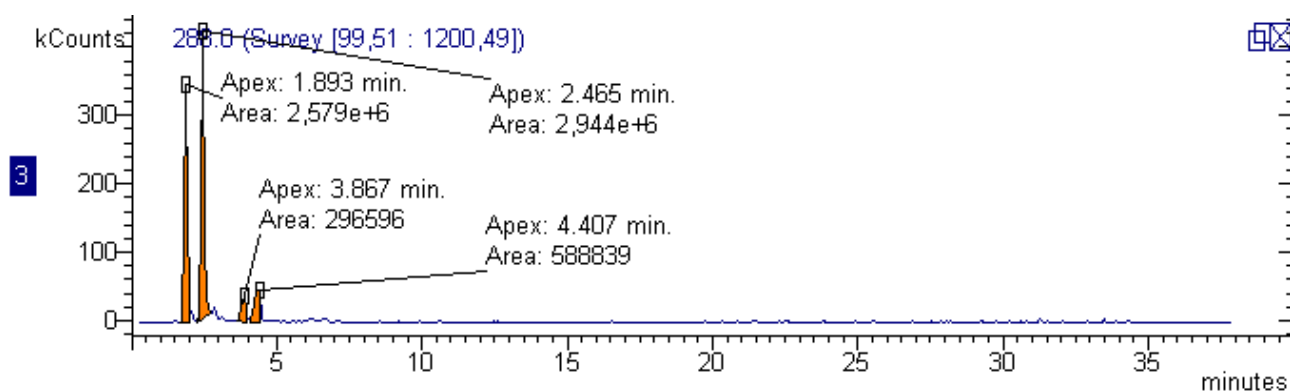


Figure S10: chromatogram related to specie at m/z 288.

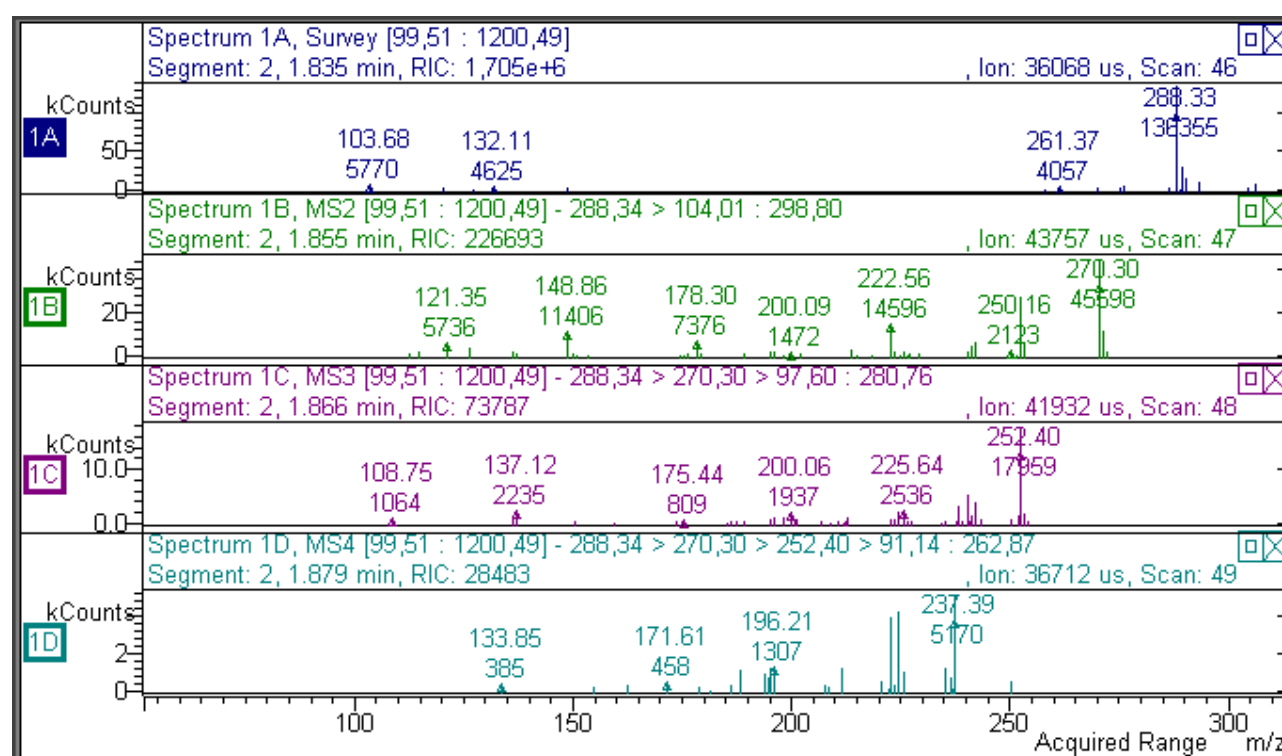


Figure S11: specie at m/z 288 lycorine RT 1,9 min.

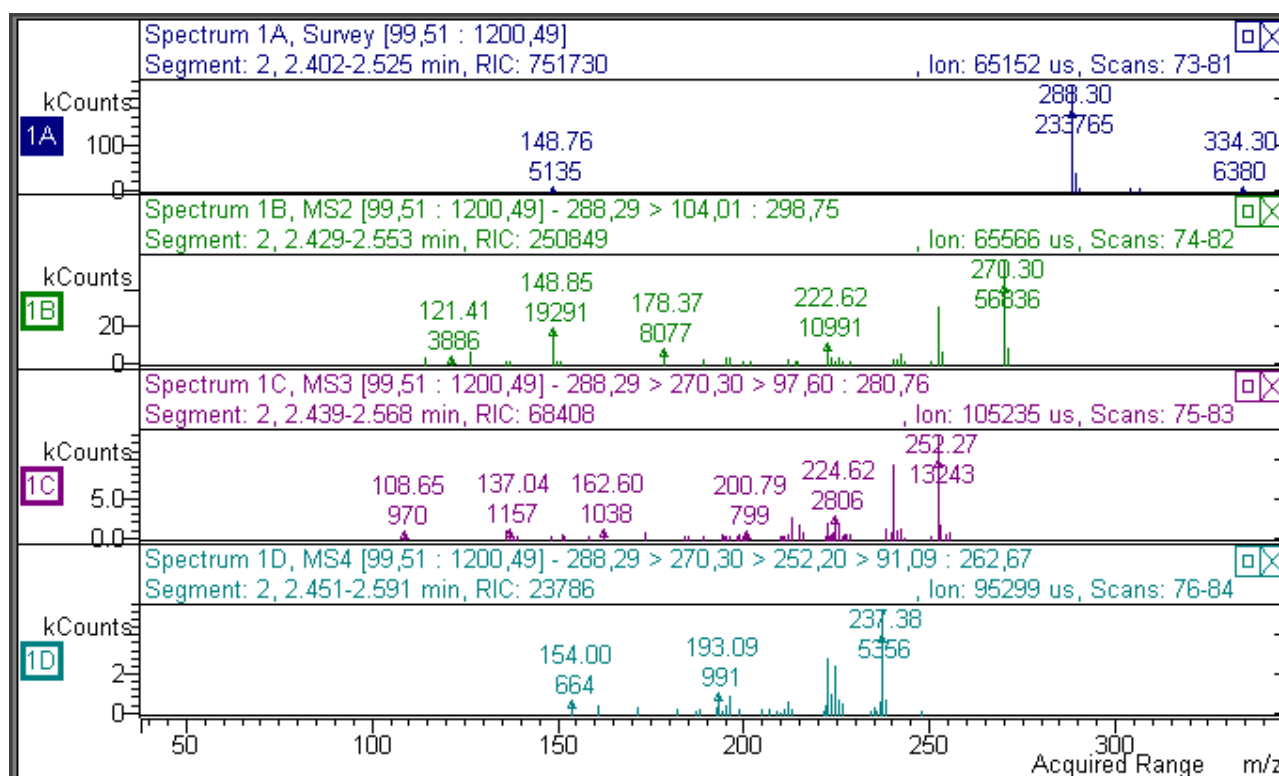


Figure S12: specie at m/z 288 epilycorine RT 2.45 min.

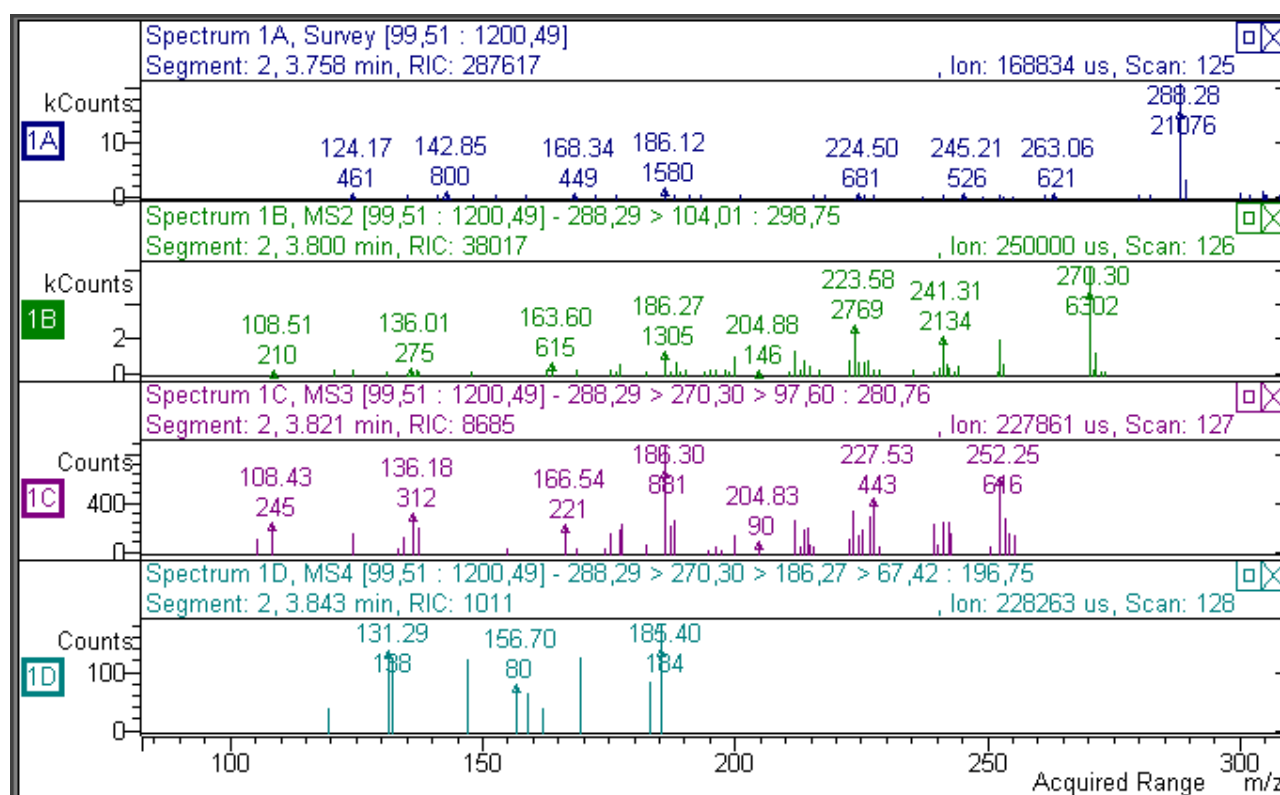


Figure S13: specie at m/z 288 lycorine type RT 3.8 min.

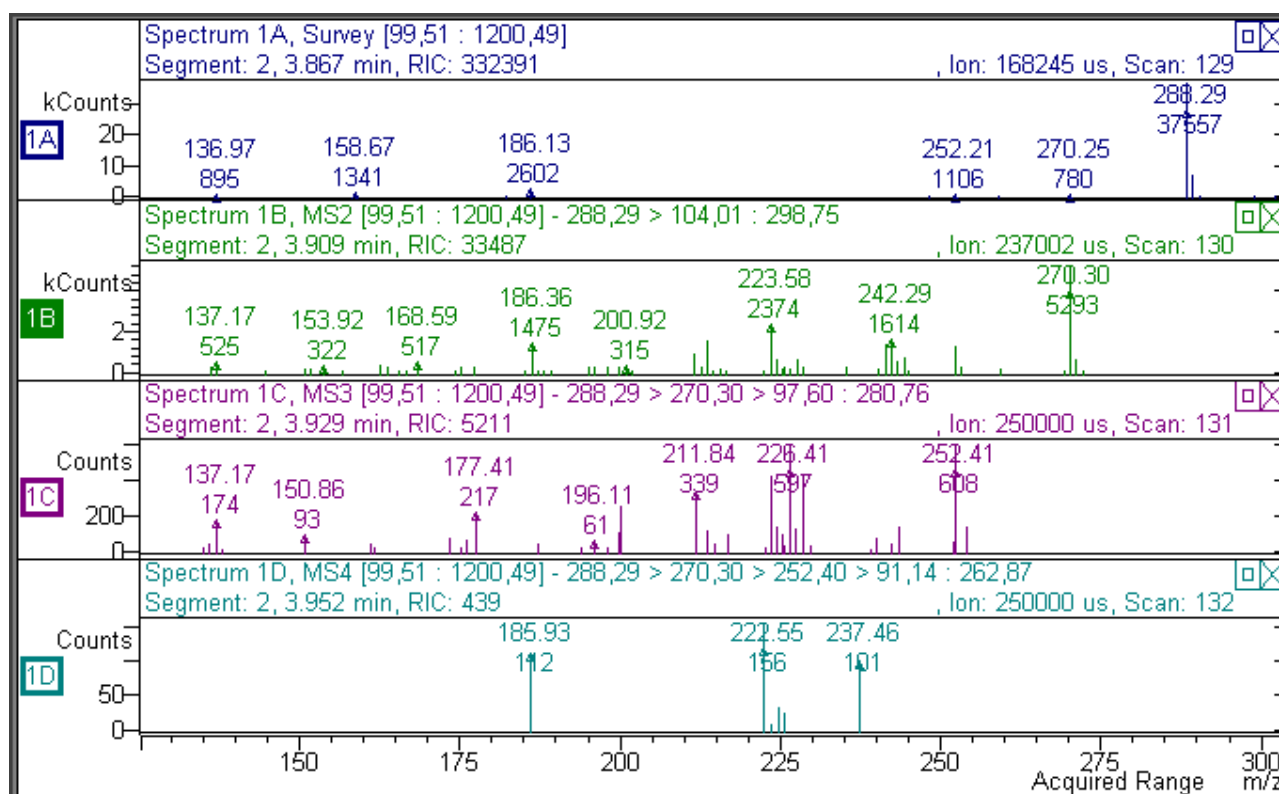


Figure S14: specie at m/z 288 lycorine type RT 3.9 min.

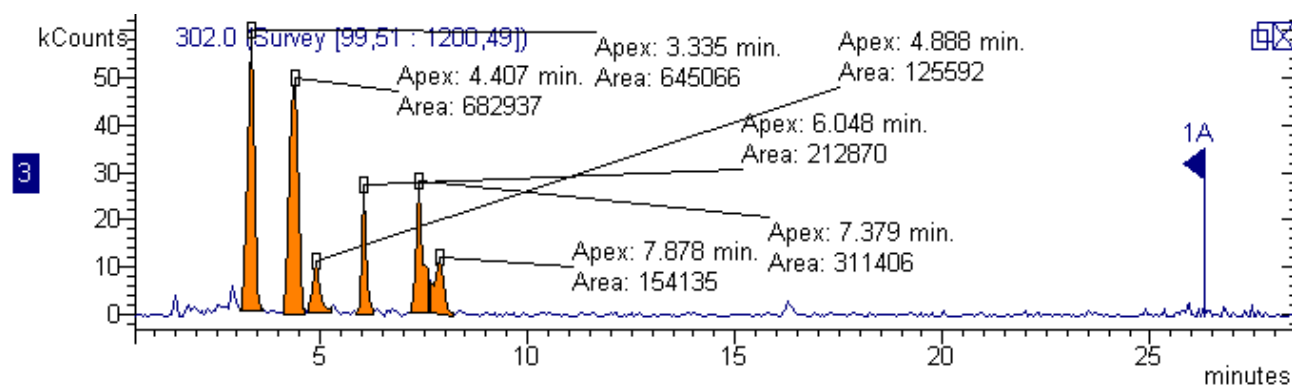


Figure S15: chromatogram related to specie at m/z 302.

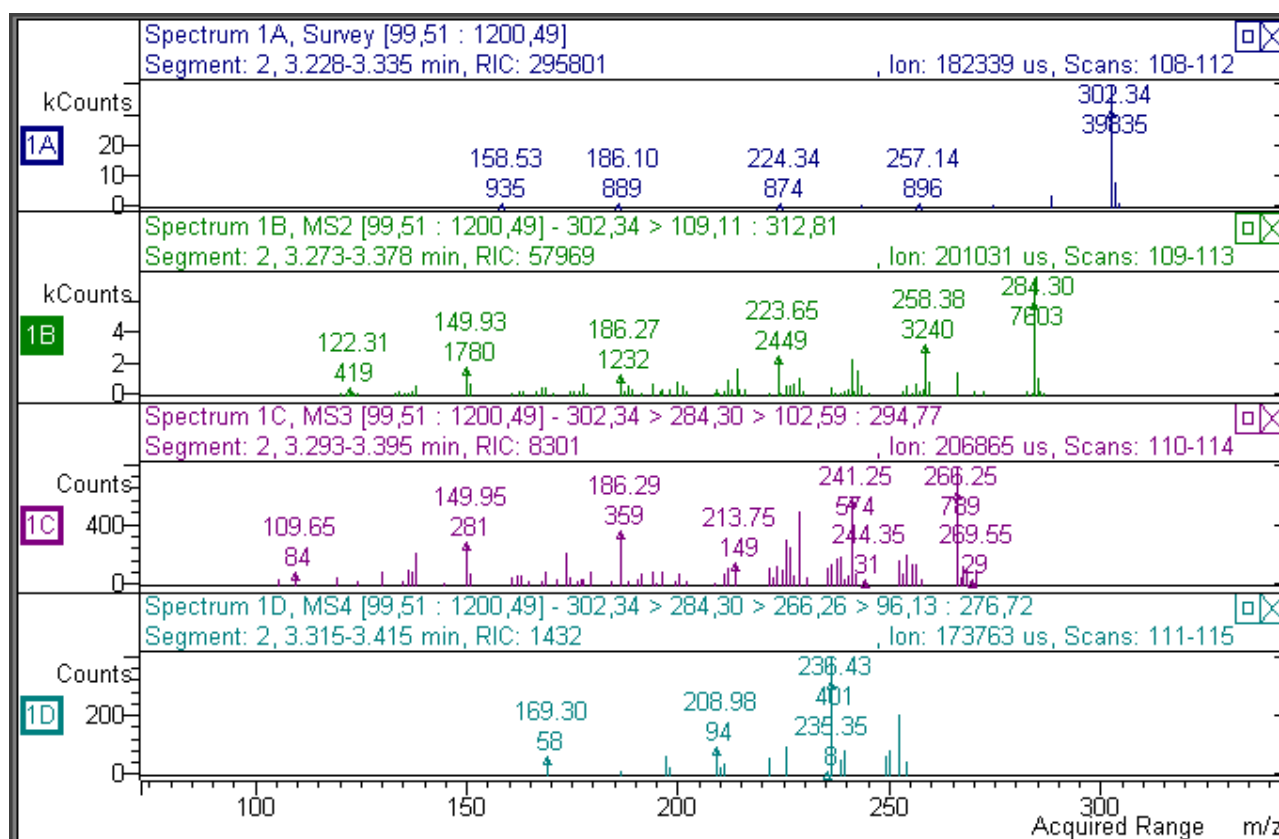


Figure S16: specie at m/z 302 oduline RT 3.3 min.

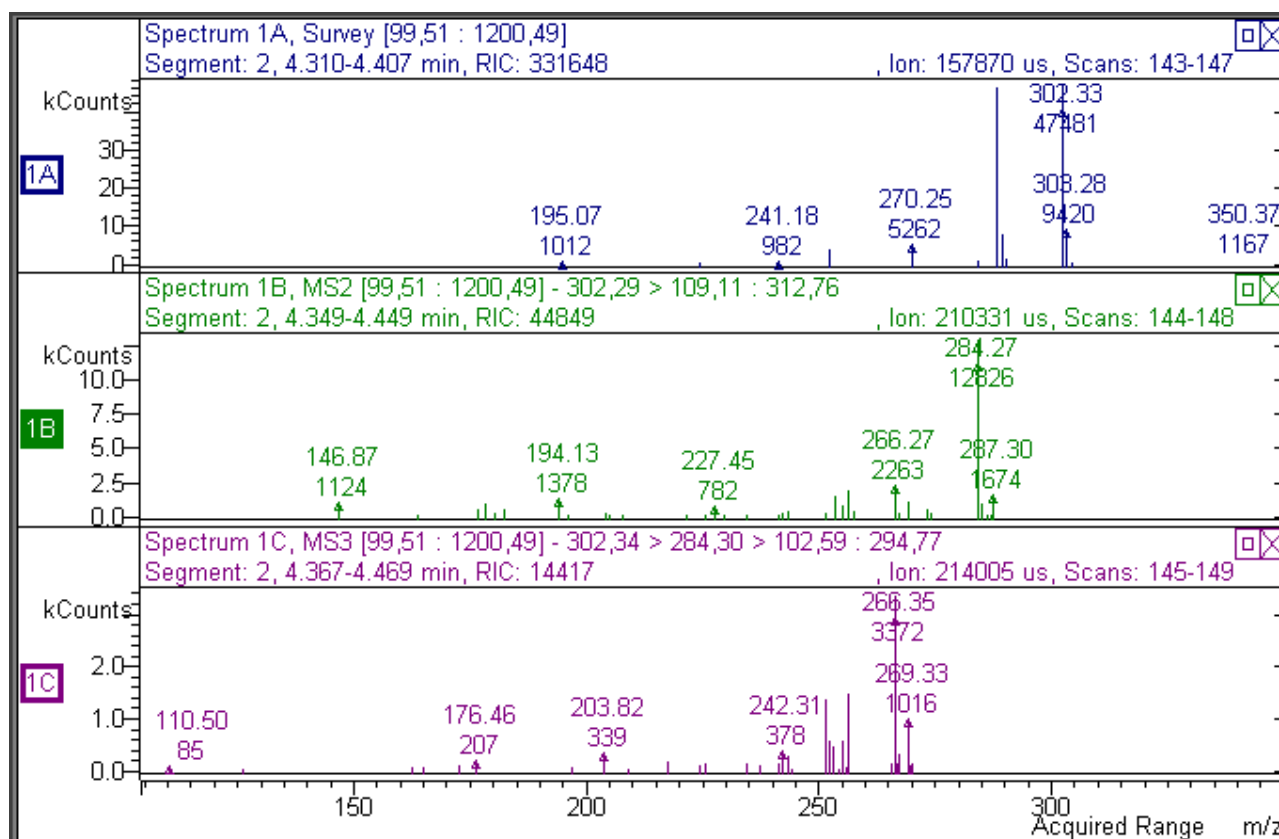


Figure S17: specie at m/z 302 RT 4.4 min.

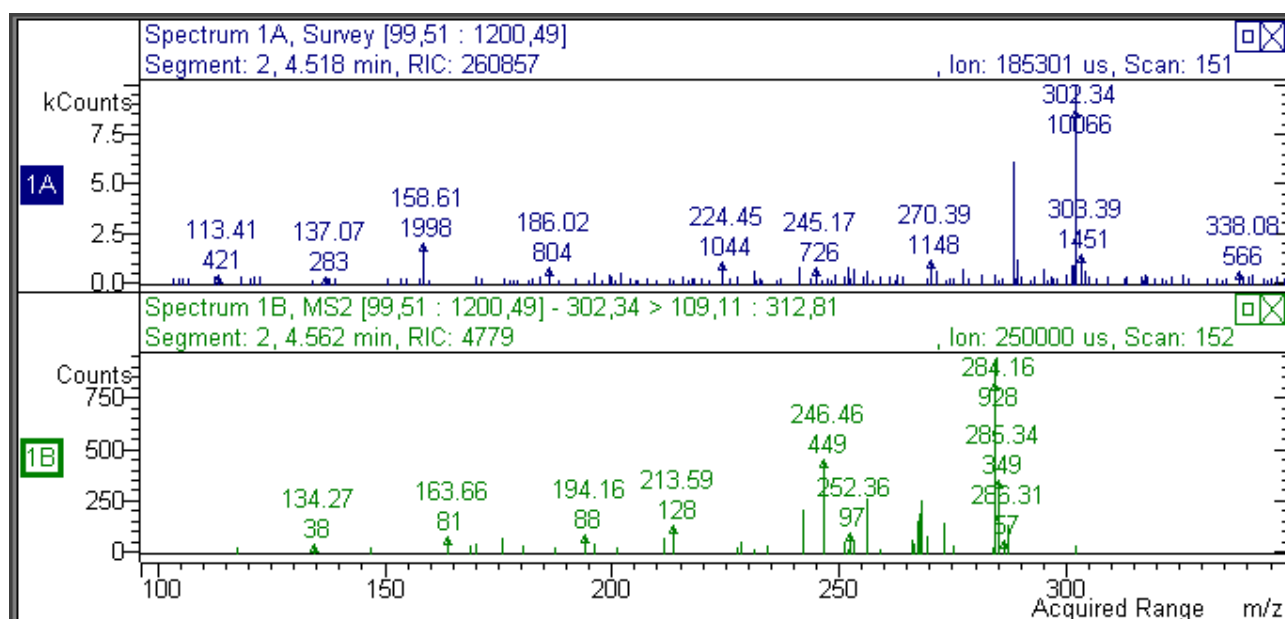


Figure S18: specie at m/z 302 RT 4.5 min.

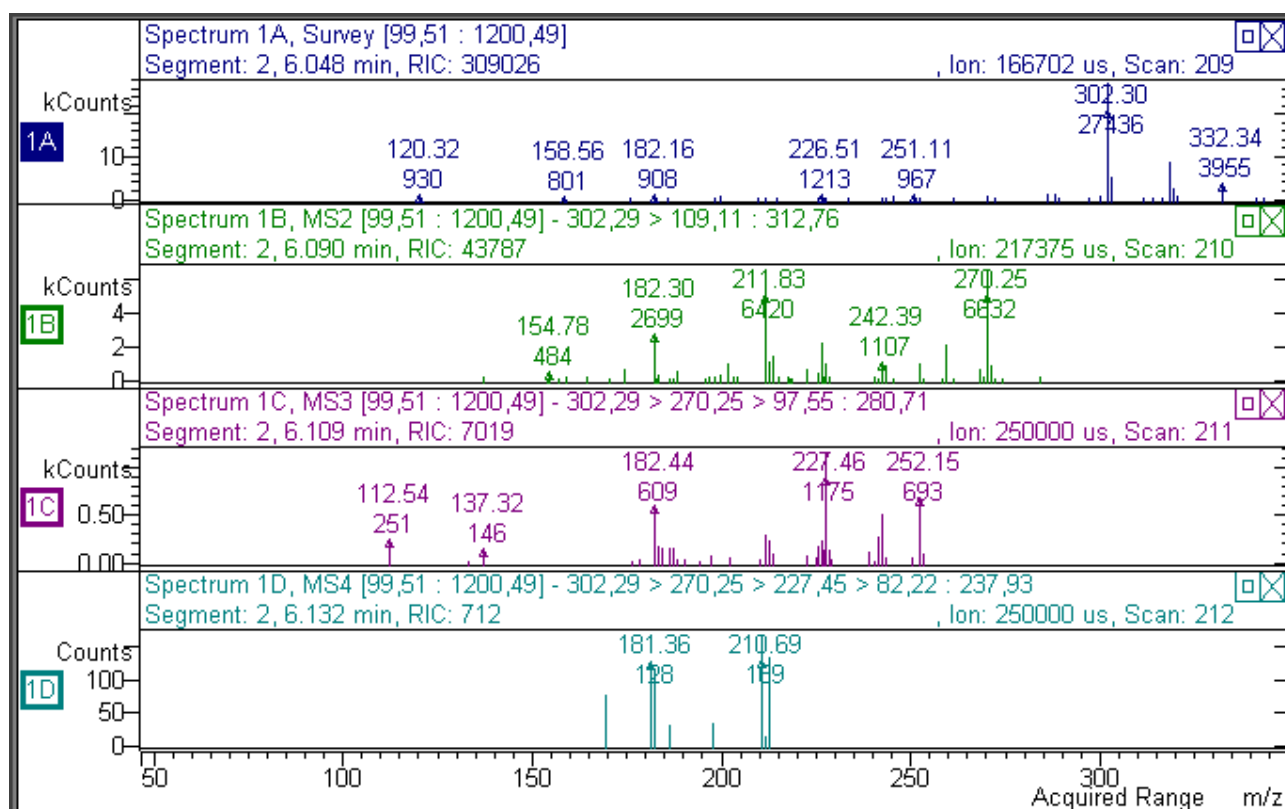


Figure S19: specie at m/z 302 RT 6.0 min lycorine derivatives.

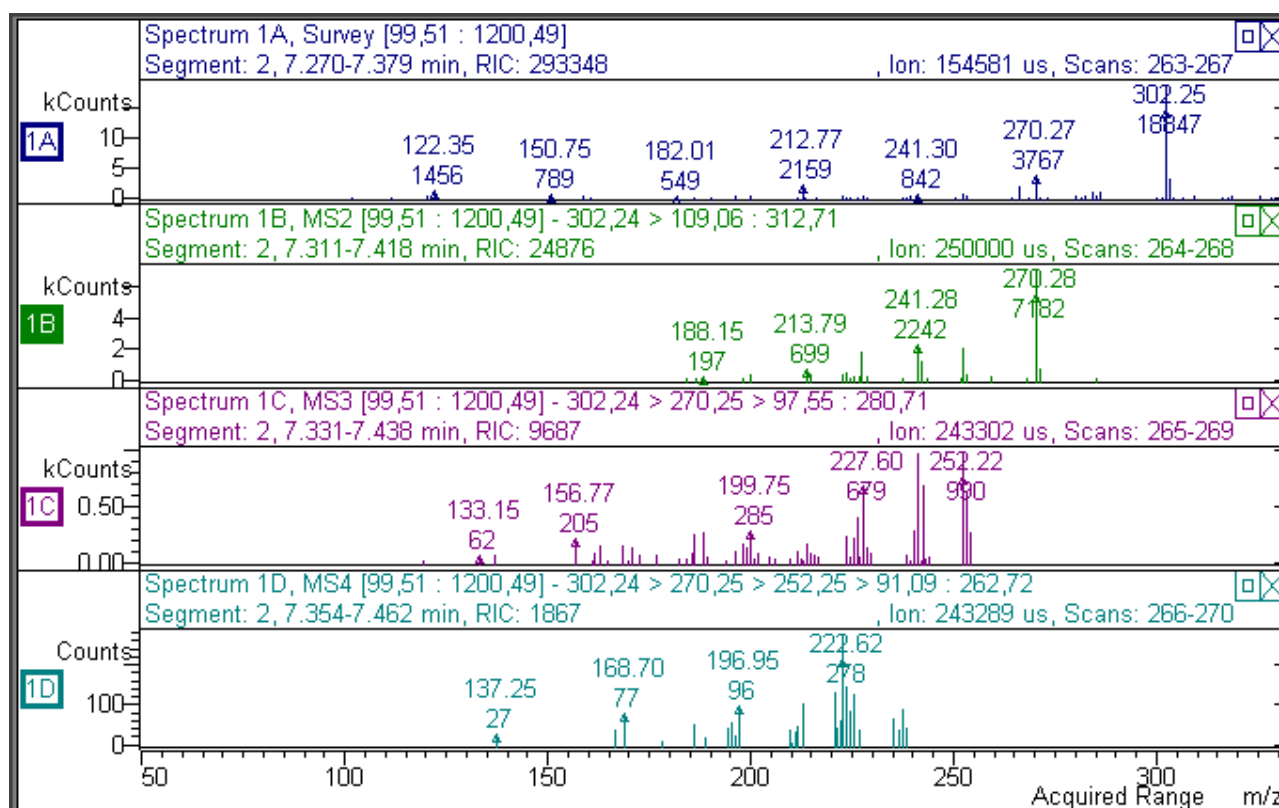


Figure S20: specie at m/z 302 RT 7.3 min.

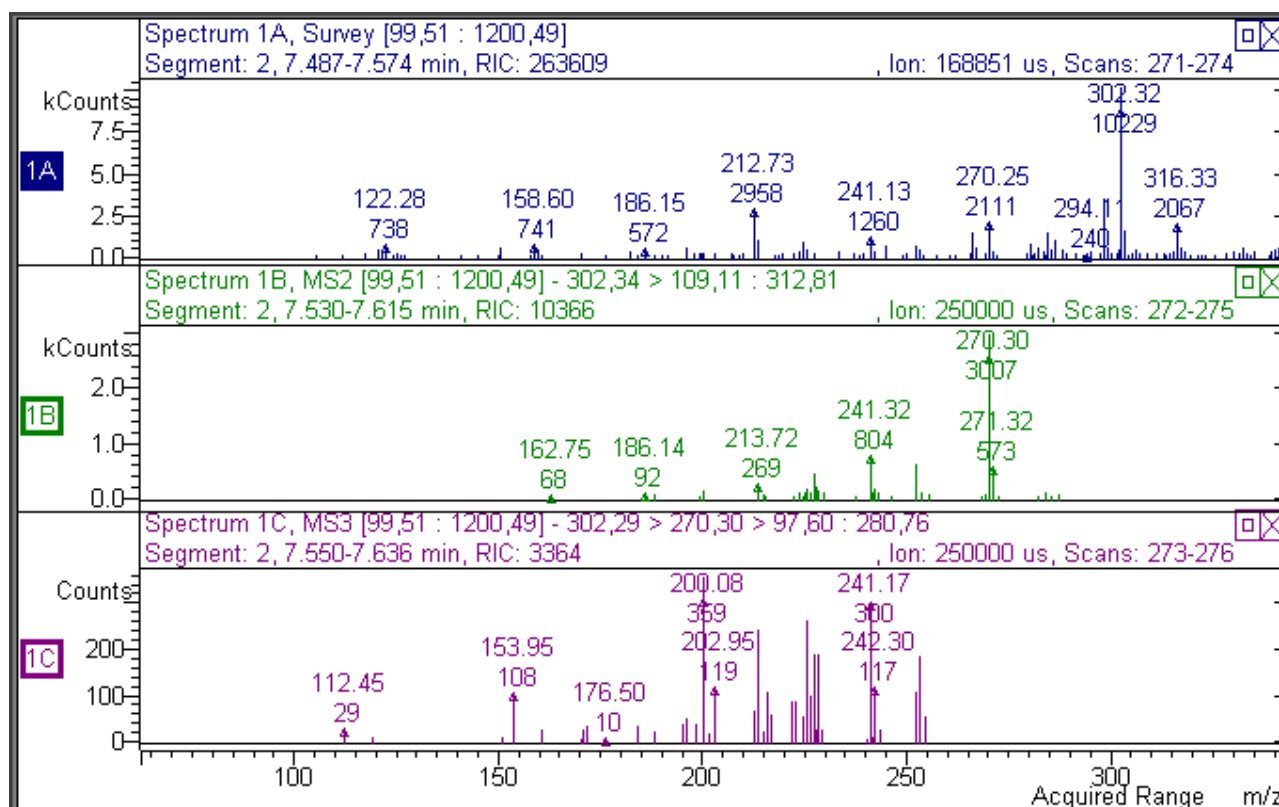


Figure S21: specie at m/z 302 RT 7.84 min.

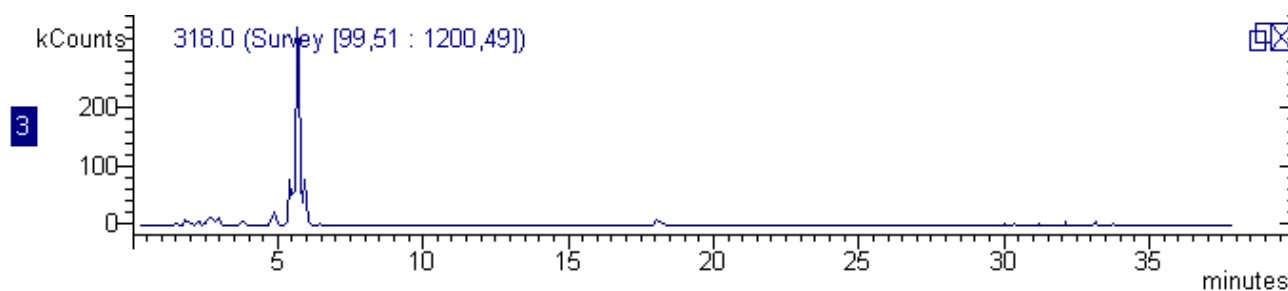


Figure S22: chromatogram related to specie at m/z 318.

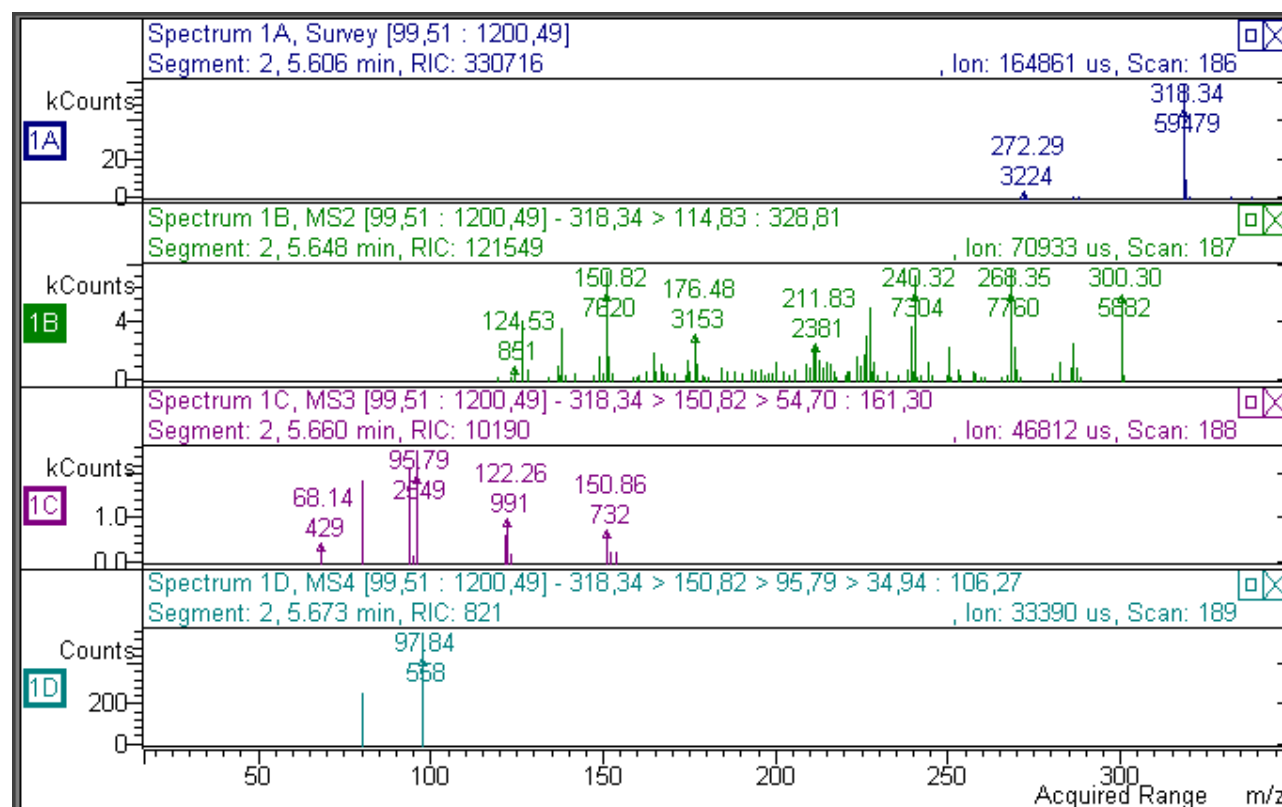


Figure S23: specie at m/z 318 crinamidine RT 5.6 min.

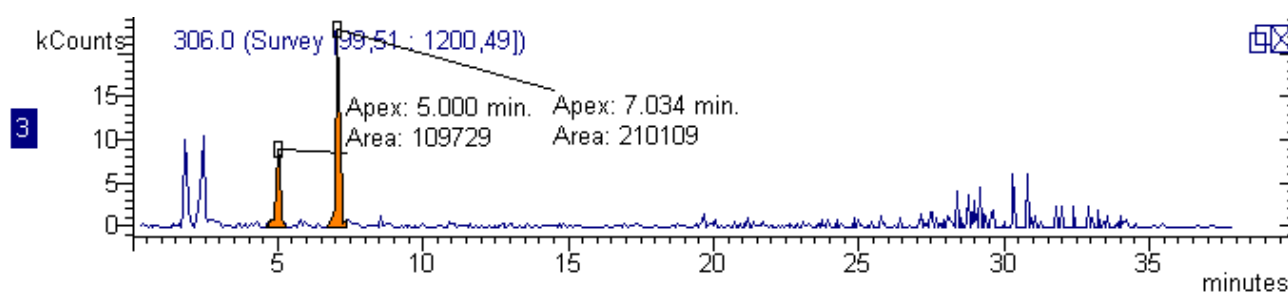


Figure S24: chromatogram related to specie at m/z 306.

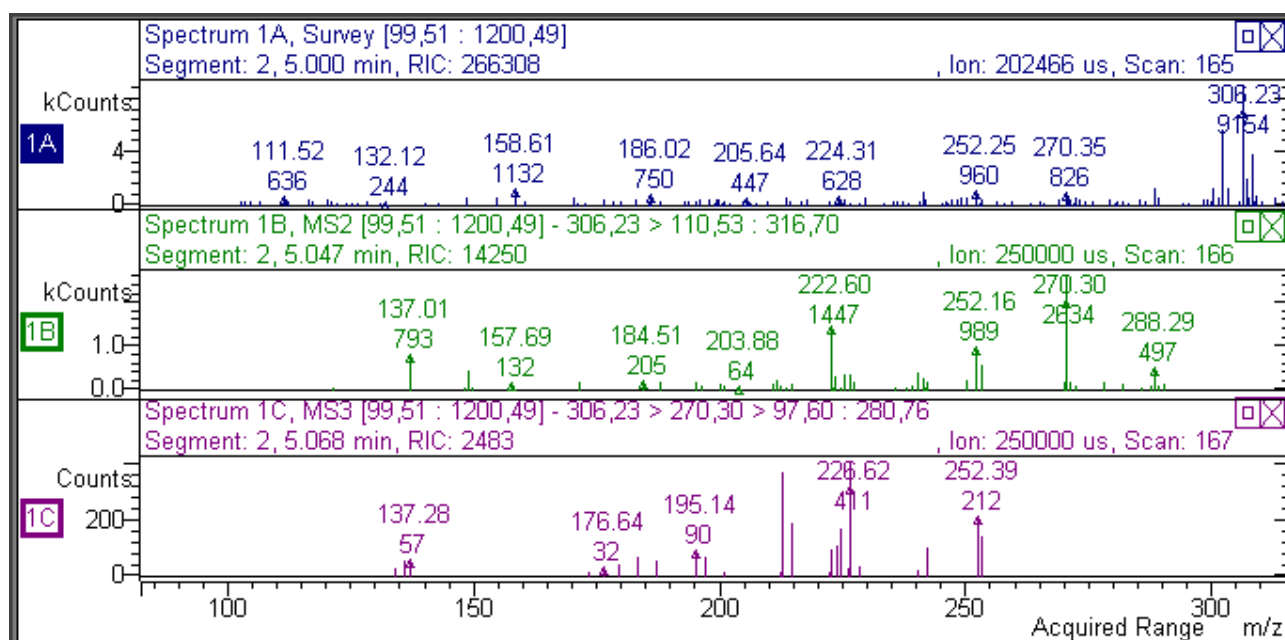


Figure S25: specie at m/z 306 RT 5 min.

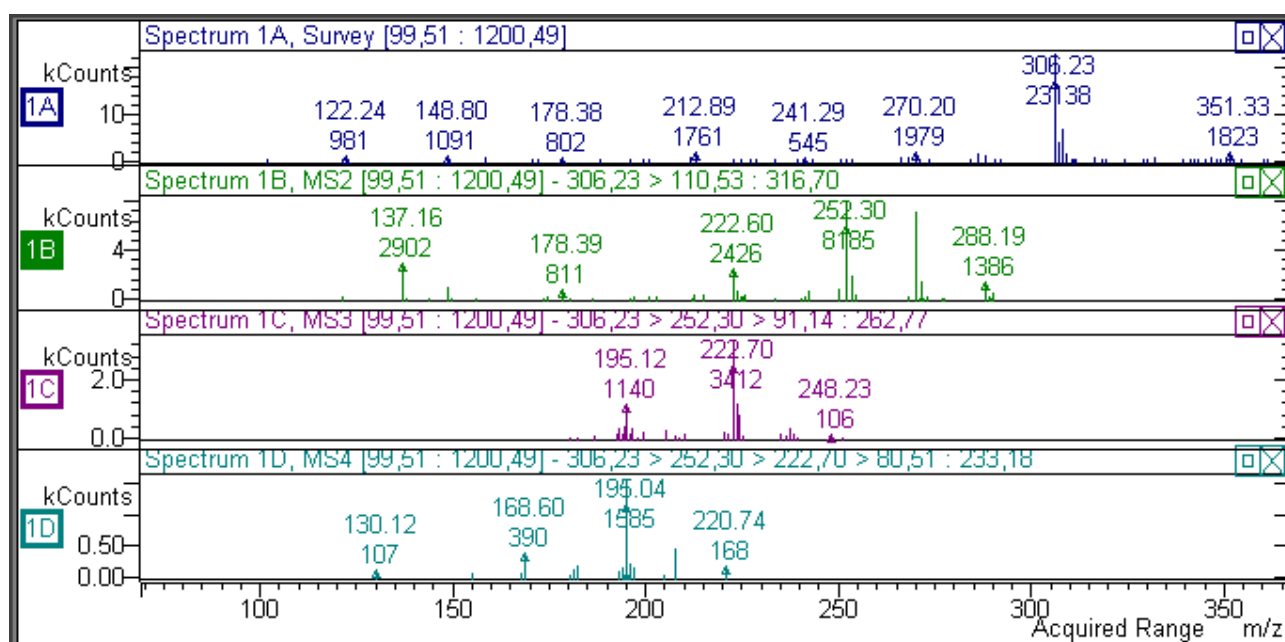


Figure S26: specie at m/z 306 RT 7 min.

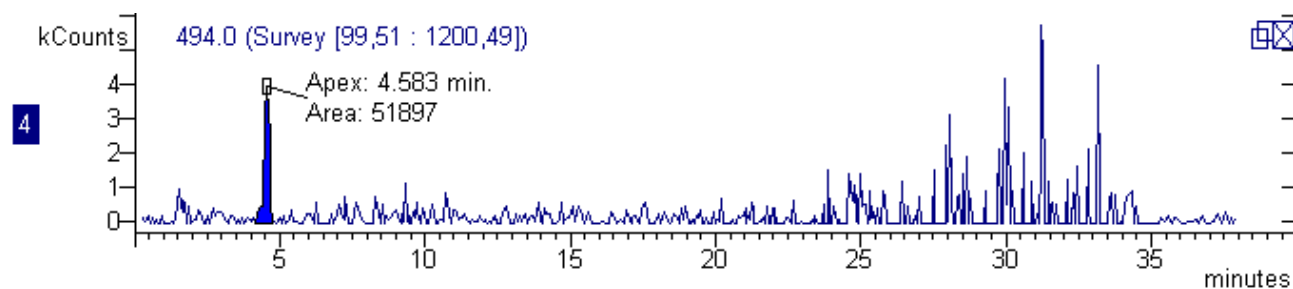


Figure S27: chromatogram related to specie at m/z 494.

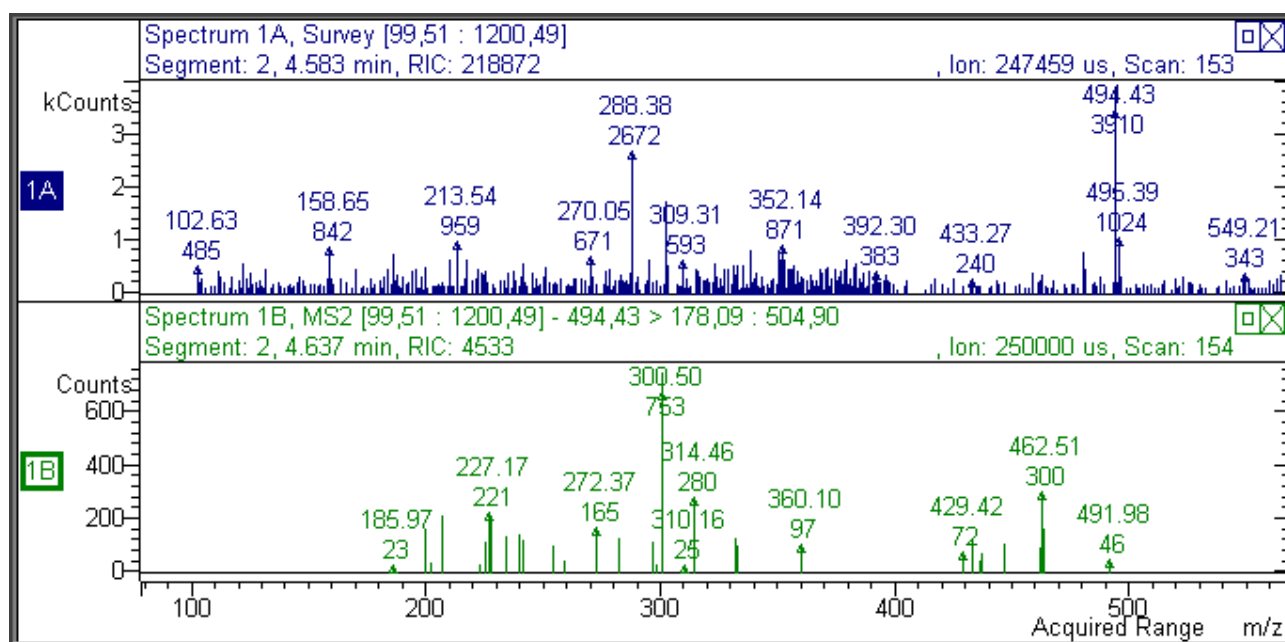


Figure S28: specie at m/z 494 RT 4.5 min.