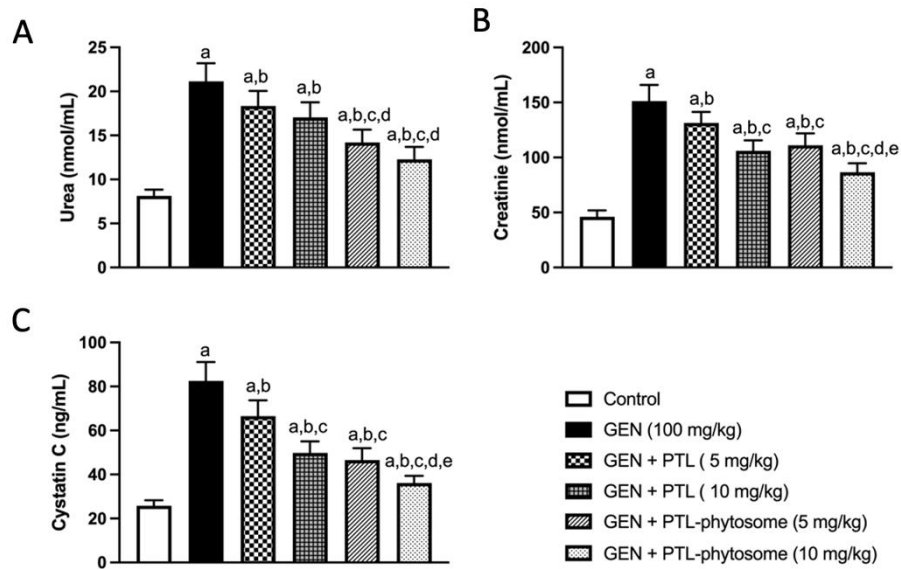


*Supplementary Materials*

**Table S1. List of primers used for RT-PCR.**

	Forward Primer	Reverse Primer	Accession Number
Bax	5'CCTGAGCTGACCTTGGAGCA	5'GGTGGTTGCCCTTTTCTACT	U32098.1
Bcl2	5'TGATAACCGGGAGATCGTGA	5'AAAGCACATCCAATAAAAAGC	NM_016993.1
$\beta$ -Actin	5'TCCGTCGCCGGTCCACACCC	5'TCACCAACTGGGACGATATG	NM_031144.3



**Figure S1. The protective effects of PTL and PTL-phytosome on the kidney function markers.** Serum levels of kidney function markers, including (A) urea, (B) creatinine, and (C) cystatin C, were elevated in GEN-treated rats while decreased in both PTL and PTL-phytosomes co-treated rats. However, PTL- pyrosomes-cotreated rats (5 or 10 mg/kg) showed a significant reduction in the serum levels of kidney function markers compared to the PTL-cotreated group (5 or 10 mg/kg). Data are expressed as Mean  $\pm$  SD (n = 6). a: significant when compared to control at  $p < 0.05$ ; b: significant when compared to GEN-alone at  $p < 0.05$ ; c: significant when compared to GEN + PTL (5 mg/kg) at  $p < 0.05$ ; d: significant when compared to GEN + PTL (10 mg/kg) at  $p < 0.05$ ; e: significant when compared to GEN + PTL-phytosomes (5 mg/kg) at  $p < 0.05$ .