

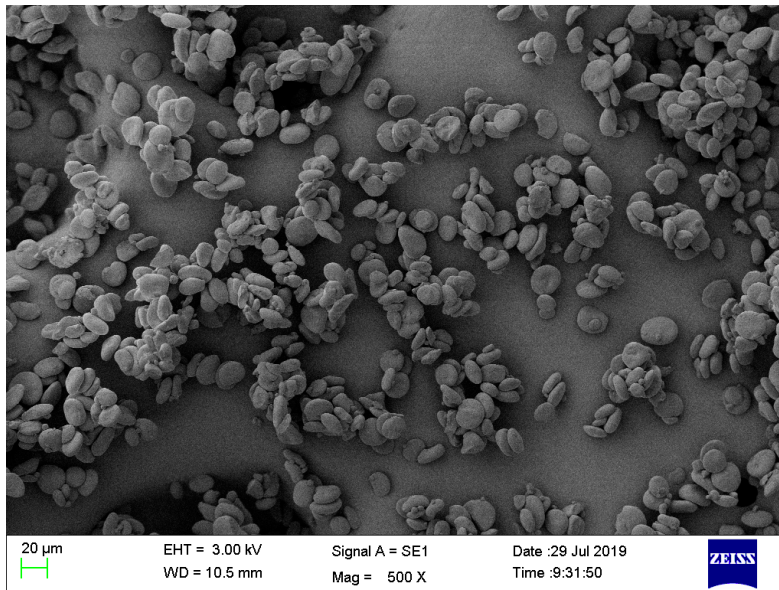
Supplemental Materials

Figure legends

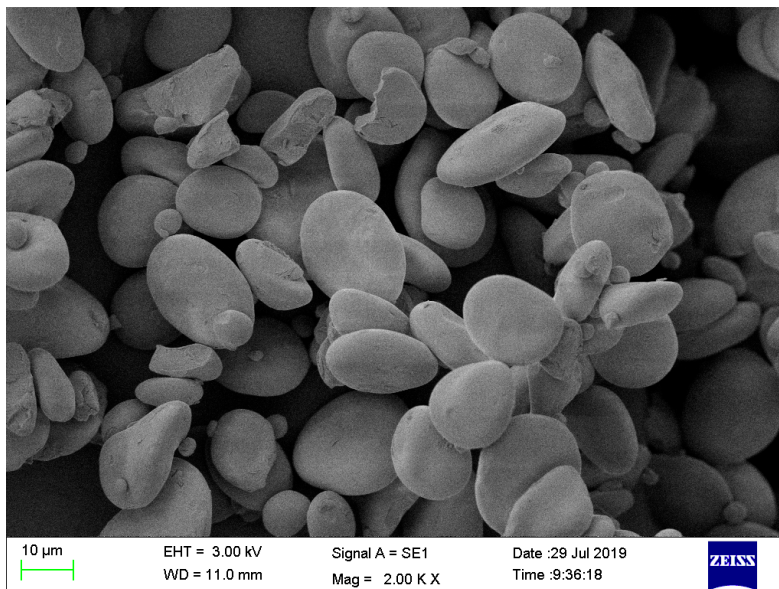
Figure S1. The morphological property of HBS at the magnifications of $500.0\times$ (A), $2000.0\times$ (B), and $5000.0\times$ (C).

Figure S2. FT-IR spectrum (A) and XRD pattern (B) of HBS.

A



B



C

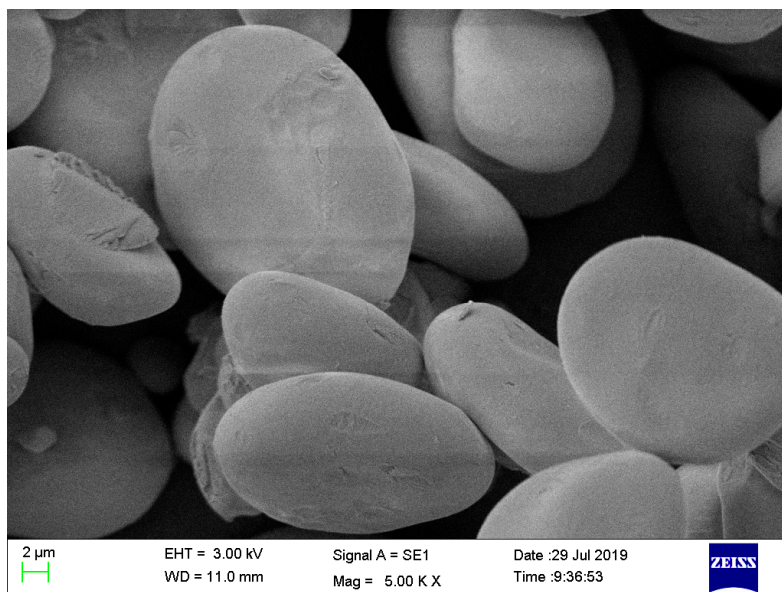
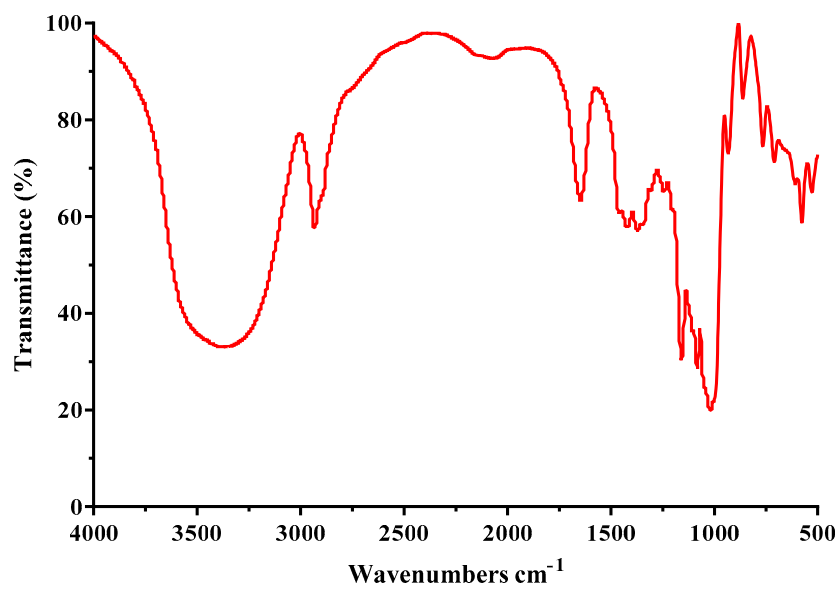


Figure S1: The morphological property of HBS at the magnifications of 500.0× (A), 2000.0× (B), and 5000.0× (C)

A



B

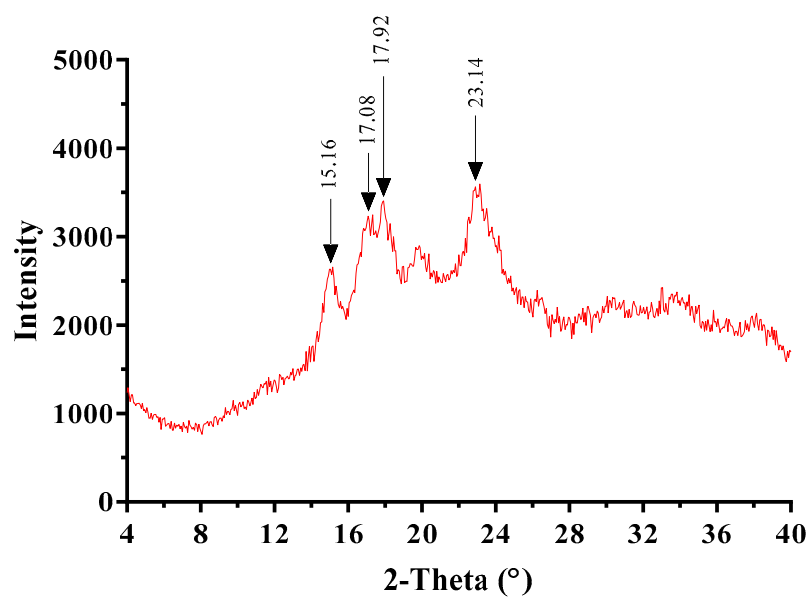


Figure S2: FT-IR spectrum (**A**) and XRD pattern (**B**) of HBS

Tables

Table S1 Physicochemical characterization of HBS.

Samples	HBS
Total starch content (%)	96.82 ± 0.24
Amylose content (%)	32.98 ± 0.82
Protein content (%)	nd ^b
Water-binding capacity (g/g)	137.50 ± 2.12
Solubility (%)	14.75 ± 2.47
Swelling power (g/g)	11.57 ± 0.68
Relative crystallinity (%)	18.03 ± 0.51

^a % is expressed as the weight percent. ^b nd means no data detected.

The data were presented as means ± SD (n = 3).