

## Supplement materials

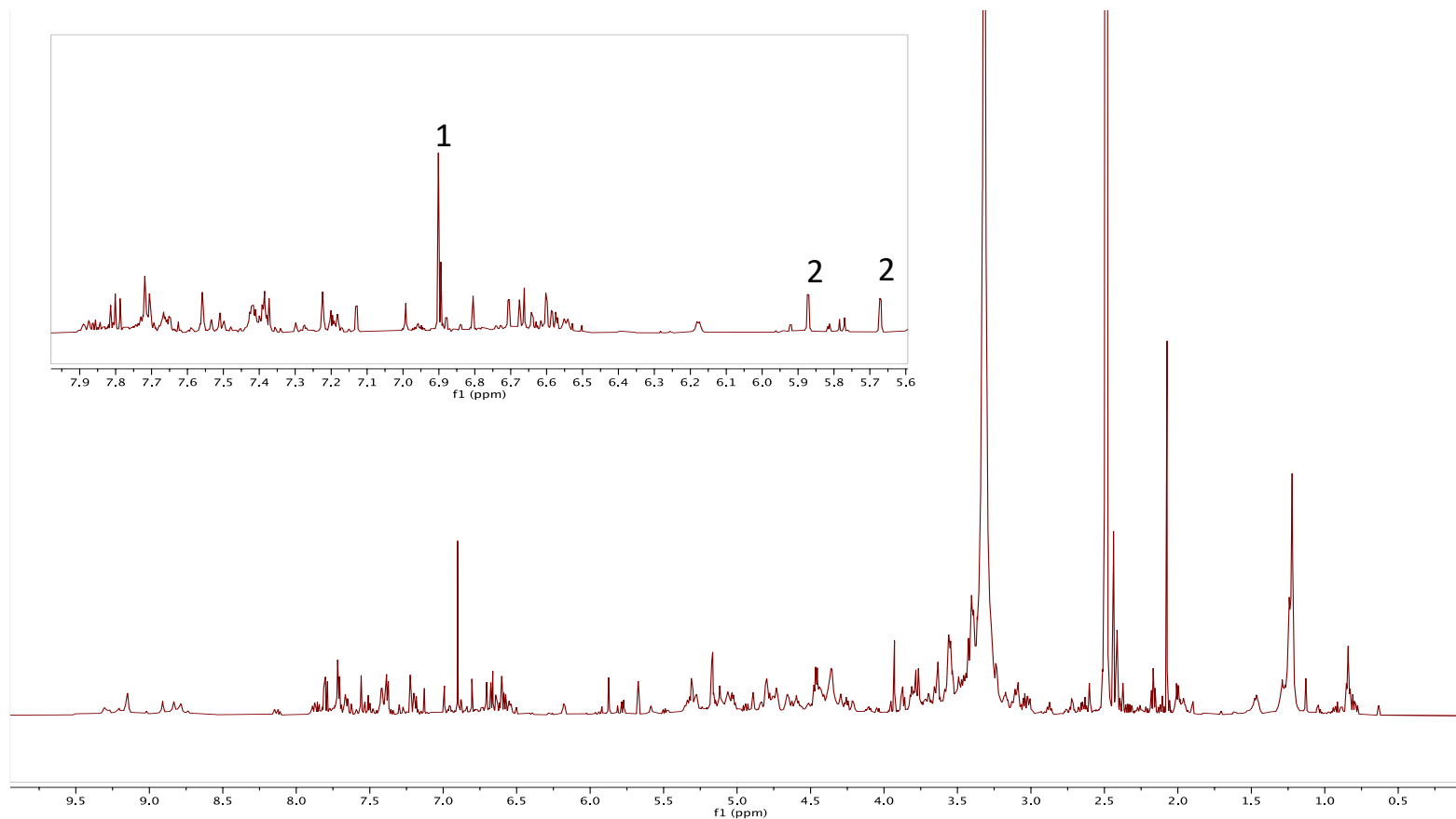


Figure S1. <sup>1</sup>H-NMR spectra of *Rheum palmatum* extract (RPE4) in DMSO-*d*<sub>6</sub>. The spectrum of all range is shown and the expansion of aromatic area is inserted on top. 1, signal of gallic acid ( $\delta$  6.90 [s]); 2, signals of catechin ( $\delta$  5.87 [d,  $J$ = 2.4 Hz], and  $\delta$  5.67 [d,  $J$ =2.4 Hz]).