

Supplementary materials

Table S1. Chemical composition of *C. wildii* essential oil

Compounds	RI exp	RI theo	% GC
Unknown	677	-	0.2
Heptane	702	700	29.5
Methyl Isobutyl Ketone	735	738	tr
2-Methylheptane	757	765	tr
Toluene	763	760	0.1
Octane	800	800	0.3
2,4-Octadiene	805	815	tr
<i>p</i> -Xylene	867	866	tr
4-Heptanone	870	869	tr
Compounds	Experimental RI	Theoretical RI	%
3-Heptanone	886	887	0.1
2-Heptanone	891	890-895	0.1
Nonane	900	900	0.9
4-Heptanol	897	-	0.1
3-Heptanol	903	892	0.1
2-Heptanol	907	900	0.1
Unknown	918	-	0.1
Tricyclene	920	925	0.1
α -Thujene	924	930-933	3.7
α -Pinene	934	932	43.4
Camphene	946	955	0.7
2,4-Thujadiene	950	949-951	0.4
Sabinene	970	969	0.5
β -Pinene	976	974	11.0
Unknown	988	-	0.1
2-Pentylfuran	989	990	0.1
α -Phellandrene	1002	1005-1008	0.1
α -Terpinene	1015	1008	0.4
<i>p</i> -Cymene	1018	1020	tr
Carvomenthene	1021	1021	tr
<i>o</i> -Cymene	1023	1023	2.3
Limonene	1027	1024	1.0
Eucalyptol	1030	1031-1036	0.1
<i>m</i> -Cymene	1033	1023-1026	0.1
(<i>Z</i>)- β -Ocimene	1035	1037-1038	0.1
(<i>E</i>)- β -Ocimene	1046	1048	0.2
γ -Terpinene	1056	1062	0.7
Sabinene hydrate*	1072	1070	0.1
α -Terpinolene	1084	1088	0.1
Unknown	1090	-	0.1
Unknown	1104	-	0.1
α -Thujone	1106	1105	tr
γ -Thujone	1118	1114	tr
Fenchol	1122	1112	tr
α -Campholene aldehyde	1127	1119	0.1

β -pinone	1139	1142	tr
Pinocarveol	1142	1134-1137	0.4
Camphre	1146	1147	0.2
Unknown	1149	-	0.2
Unknown	1153	-	0.1
Pinocamphone	1160	1154	0.1
Unknown	1162	-	0.1
Unknown	1175	-	0.2
Terpinen-4-ol	1181	1174	0.4
Myrtenal	1195	1193-1196	0.1
α -Terpineol	1198	1190	0.1
Myrtenol	1200	1194-1196	0.2
Verbenone	1209	1209	0.2
Compounds	Experimental RI	Theoretical RI	%
Bornyl acetate	1283	1288	tr
<i>cis</i> -Verbenyl acetate	1290	1294	tr
Myrtenyl acetate	1323	1328	tr
β -Elemene	1387	1389	0.1
β -Caryophyllene	1415	1417	tr
Aromadendrene	1434	1436	tr
Guaiene	1485	1490	tr
α -Selinene	1492	1495	tr
δ -Cadinene	1516	1522	tr
Spathulenol	1576	1577	tr

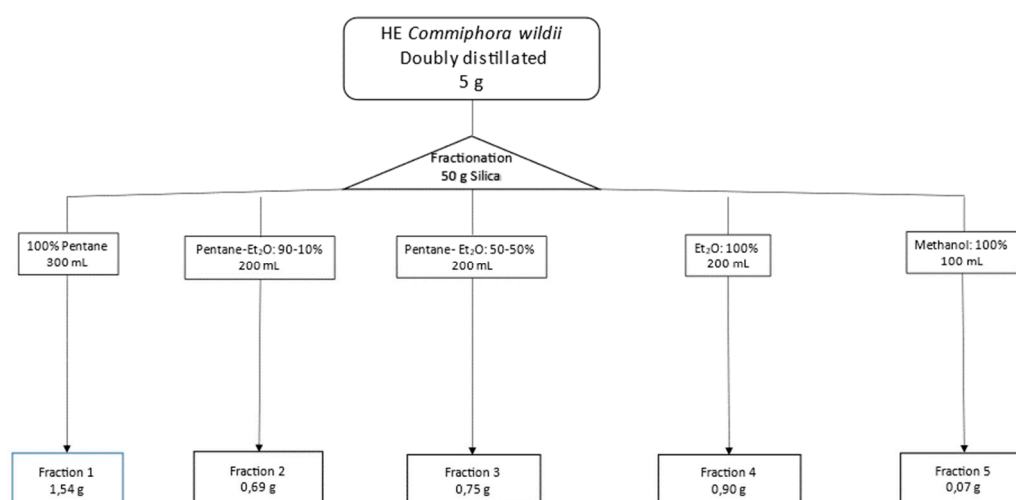


Figure S1. Fractionation protocol.

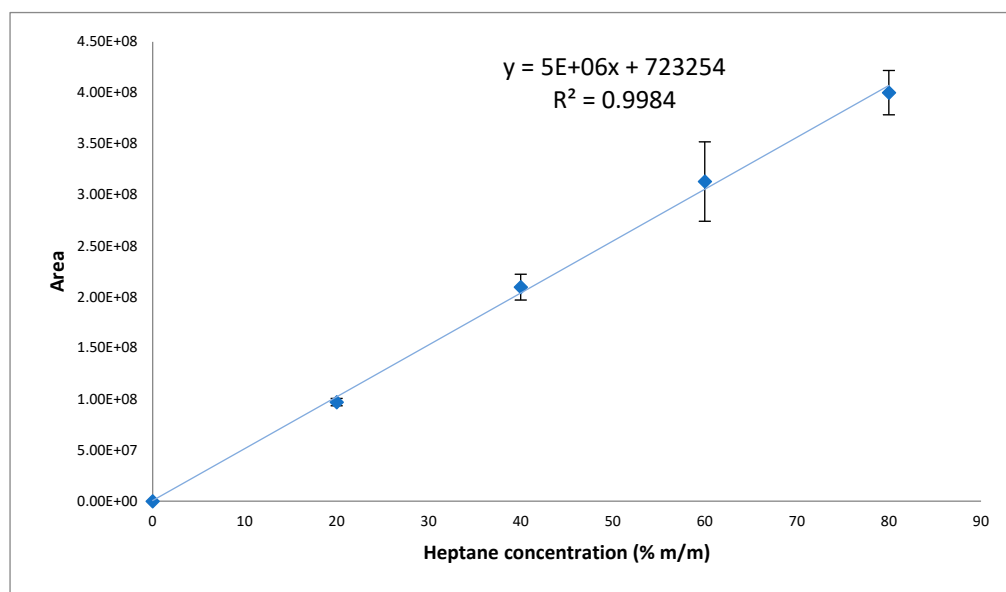


Figure S2. Heptane assay calibration curve.