

Supplementary Figures

Article

CANNABIDIOL AND ITS COMBINATIONS WITH NONSTEROIDAL ANTI-INFLAMMATORY DRUGS INDUCE APOPTOSIS AND INHIBIT ACTIVATION OF NF-KB SIGNALING IN VULVAR SQUAMOUS CELL CARCINOMA

Violetta Krajka-Kuźniak^{1*}, Katarzyna Papierska¹, Maria Narożna², Anna Jelińska³ and Aleksandra Majchrzak-Celińska¹

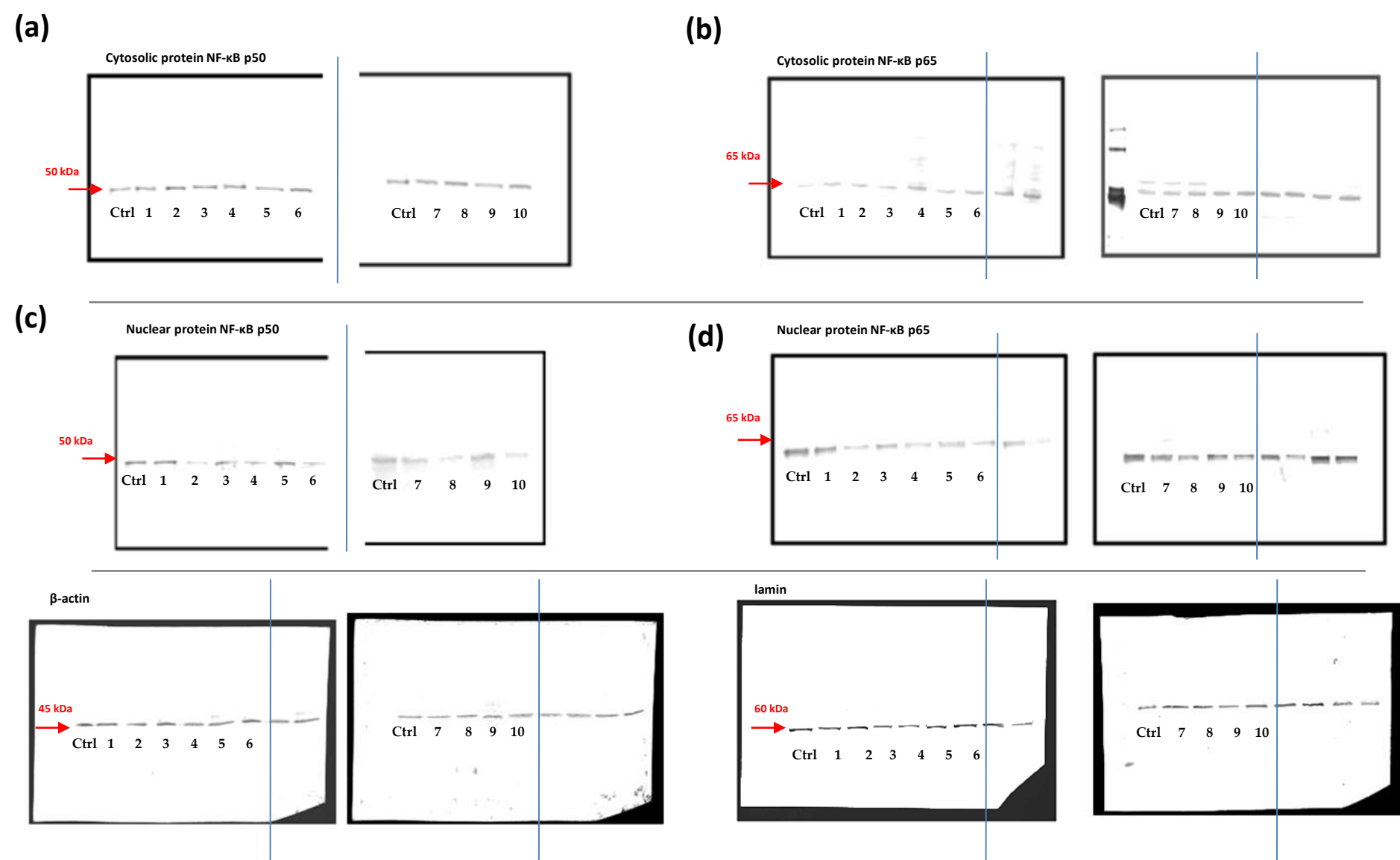


Figure S1. The representative immunoblots respectively for Figure 4. **Panel a and b** - The level of NF- κ B p50 and p65 protein in the cytosolic fraction. **Panel c and d** - The level of NF- κ B p50 and p65 protein in the nuclear fraction. Data were normalized against the level of β -actin (cytosolic proteins) or lamin (nuclear proteins). **Ctrl** - Control, **1** - CBD 10 μ M, **2** - CBD 20 μ M, **3** - DIC 10, **4** DIC - 50 μ M, **5** - CBD + DIC 10 μ M, **6** - CBD + DIC 20 μ M, **7** - IBU 10 μ M, **8** - IBU 50 μ M, **9** - CBD + IBU 10 μ M, **10** - CBD + IBU 20 μ M.

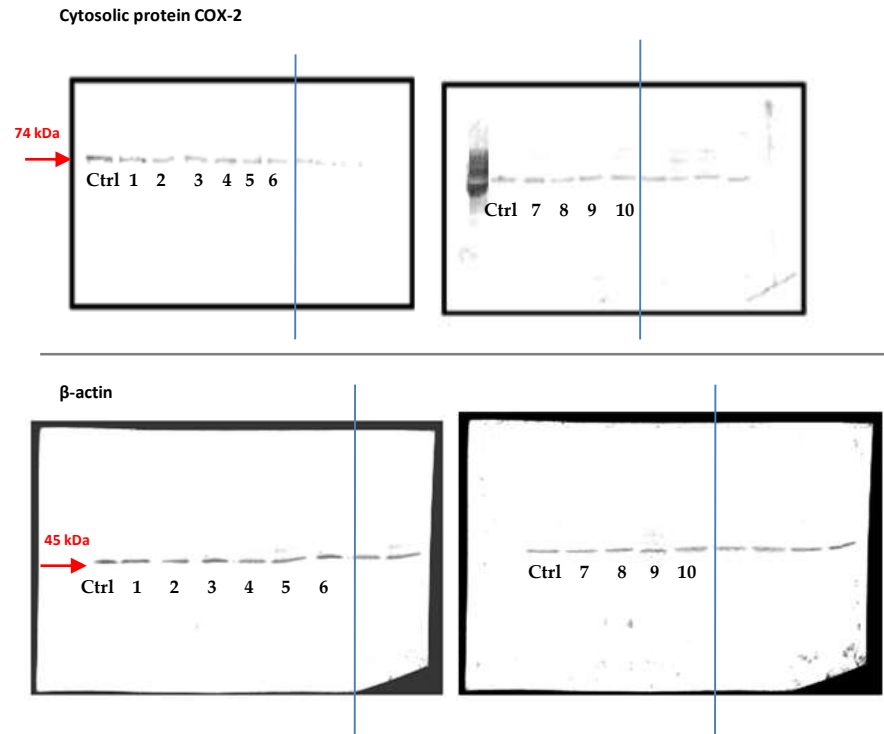


Figure S2. The representative immunoblots respectively for Figure 6. *The level of COX-2 protein.* Data were normalized against the level of β -actin. **Ctrl** – Control, **1** - CBD 10 μ M, **2** - CBD 20 μ M, **3**- DIC 10, **4** DIC – 50 μ M, **5** – CBD + DIC 10 μ M, **6** – CBD + DIC 20 μ M, **7** – IBU 10 μ M, **8** – IBU 50 μ M, **9** – CBD + IBU 10 μ M, **10** – CBD + IBU 20 μ M.

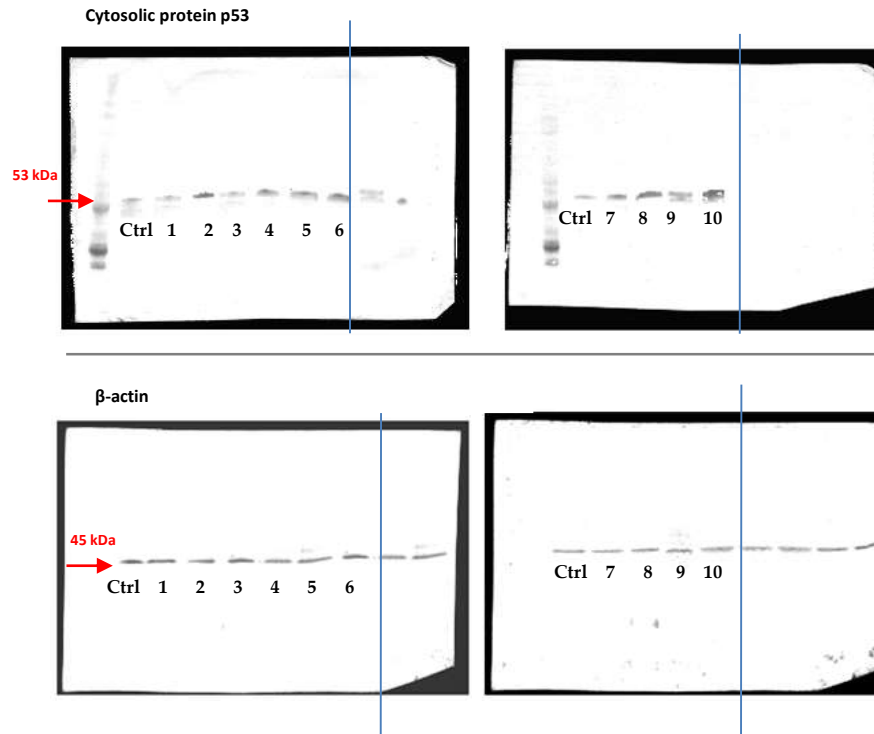


Figure S3. The representative immunoblots respectively for Figure 7. *The level of p53 protein.* Data were normalized against the level of β -actin. **Ctrl** – Control, **1** - CBD 10 μ M, **2** - CBD 20 μ M, **3**- DIC 10, **4** DIC – 50 μ M, **5** – CBD + DIC 10 μ M, **6** – CBC + DIC 20 μ M, **7** – IBU 10 μ M, **8** – IBU 50 μ M, **9** – CBD + IBU 10 μ M, **10** – CBD + IBU 20 μ M.