

Supplementary information for

SnSe Nanosheets Mimic Lactate Dehydrogenase to Reverse Tumor Acid

Microenvironment Metabolism for Enhancement of Tumor Therapy

Heng Wang^{1†}, Beilei Wang^{1†}, Jie Jiang^{2†}, Yi Wu¹, Anning Song¹, Xiaoyu Wang¹, Chenlu

Yao¹, Huaxing Dai¹, Jialu Xu¹, Yue Zhang¹, Qingle Ma¹, Fang Xu¹, Ruibin Li², Chao Wang^{1*}

¹ Institute of Functional Nano & Soft Materials (FUNSOM), Soochow University, Suzhou, 215123, China

² State Key Laboratory of Radiation Medicine and Protection, School for Radiological and Interdisciplinary Sciences (RAD-X), Collaborative Innovation Center of Radiation Medicine of Jiangsu Higher Education Institutions, Soochow University, Suzhou 215123, China

* Corresponding author: Chao Wang: cwang@suda.edu.cn

†These authors contributed equally to this work .

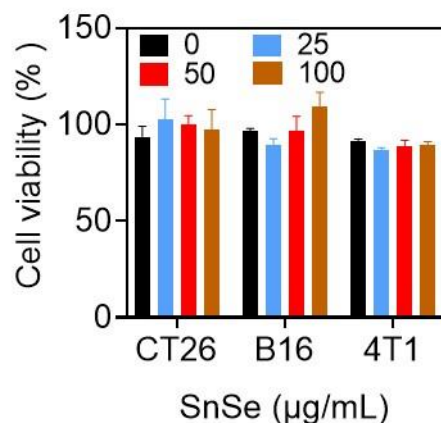


Figure S1. Cytotoxicity of SnSe NSs with various concentrations to cancer cells. Data are means \pm SD.

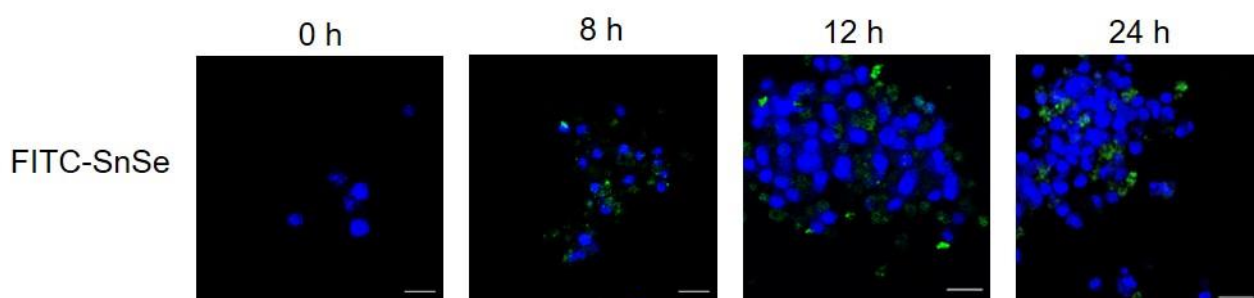


Figure S2. Confocal imaging of FITC-labelled SnSe NSs with different time points after incubation with RAW 264.7 cells for 24 h (blue: DAPI; green: FITC; Scale bar = 20 μ m).

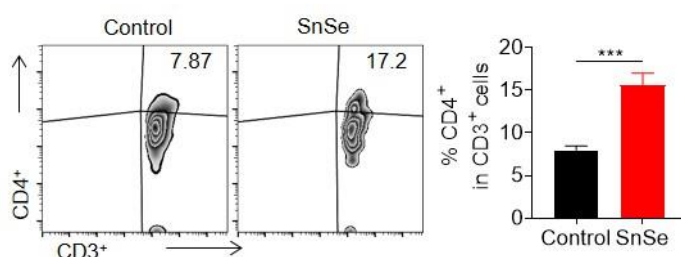


Figure S3. Representative flow cytometry zebra plots and statistical analyses of CD4⁺ T cells in B16 tumor model after SnSe NSs treatments. Data are means \pm SD. Statistical significance between different groups was obtained by Student's *t* tests (two-tailed). *P*-value: *** *P* < 0.001. n.s., no significance. a.u., arbitrary units.