

Supplementary Materials

Table S1. Content of total sugar and sulfate of SH.

Sample	Total Sugar (%)	Sulfate (%)
<i>Sargassum horneri</i>	39.69	16.93

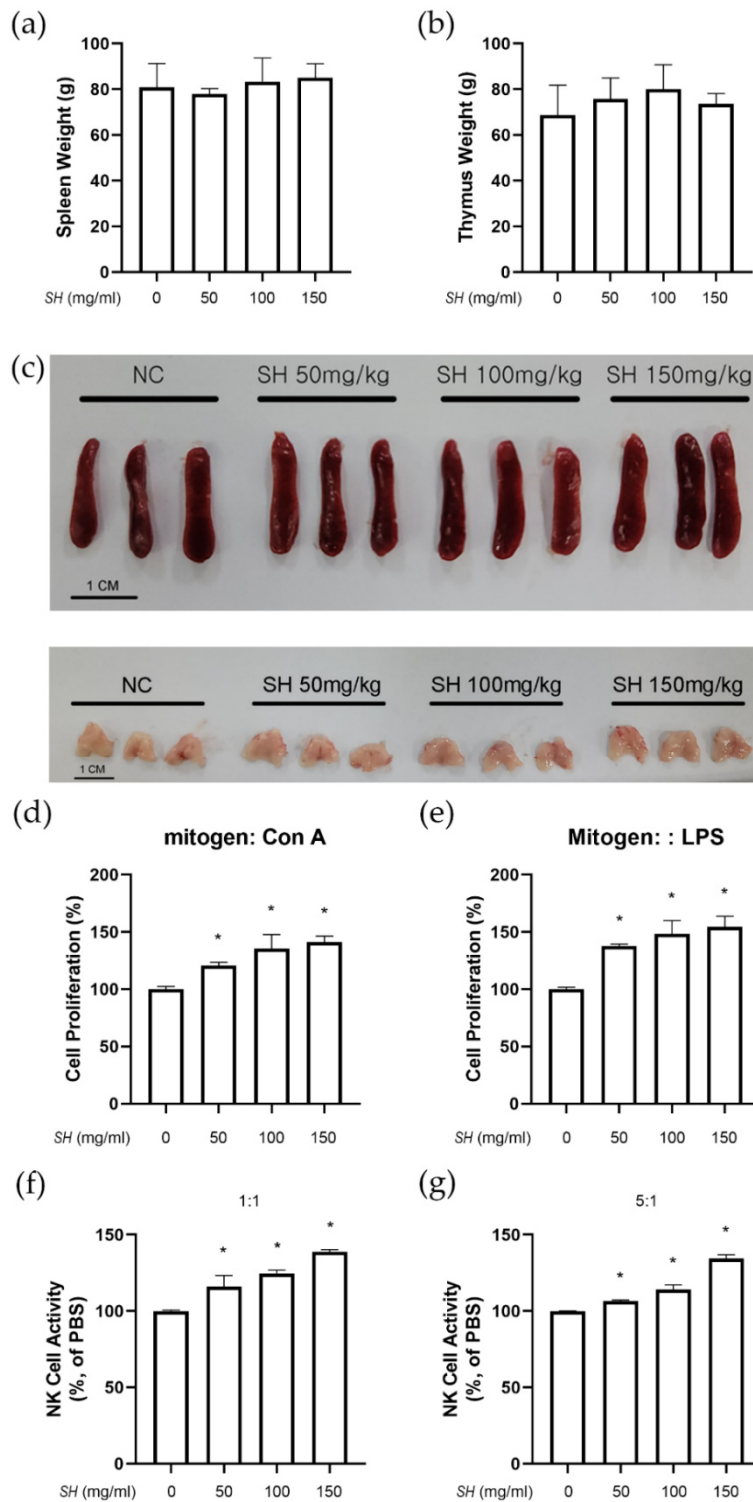


Figure S1. SH enhances immune functions in BALB/c mice. SH was orally administrated in BALB/c mice for 14 days and immune-related parameters were measured. Tissue weight of (a) spleen and (b) thymus was measured. (c) Representative photograph images of spleen and thymus of each group are shown. Splenocytes were isolated from the mice of each group and cell proliferation induction by (d) Con A or (e) LPS was evaluated. NK cells purified from splenocytes were tested for YAC-1 targeting activities at (f) 1:1 and (g) 5:1 ratio. * $p < 0.05$ vs. PBS-fed control group. Results are displayed as mean \pm SD of three or more separate experiments.

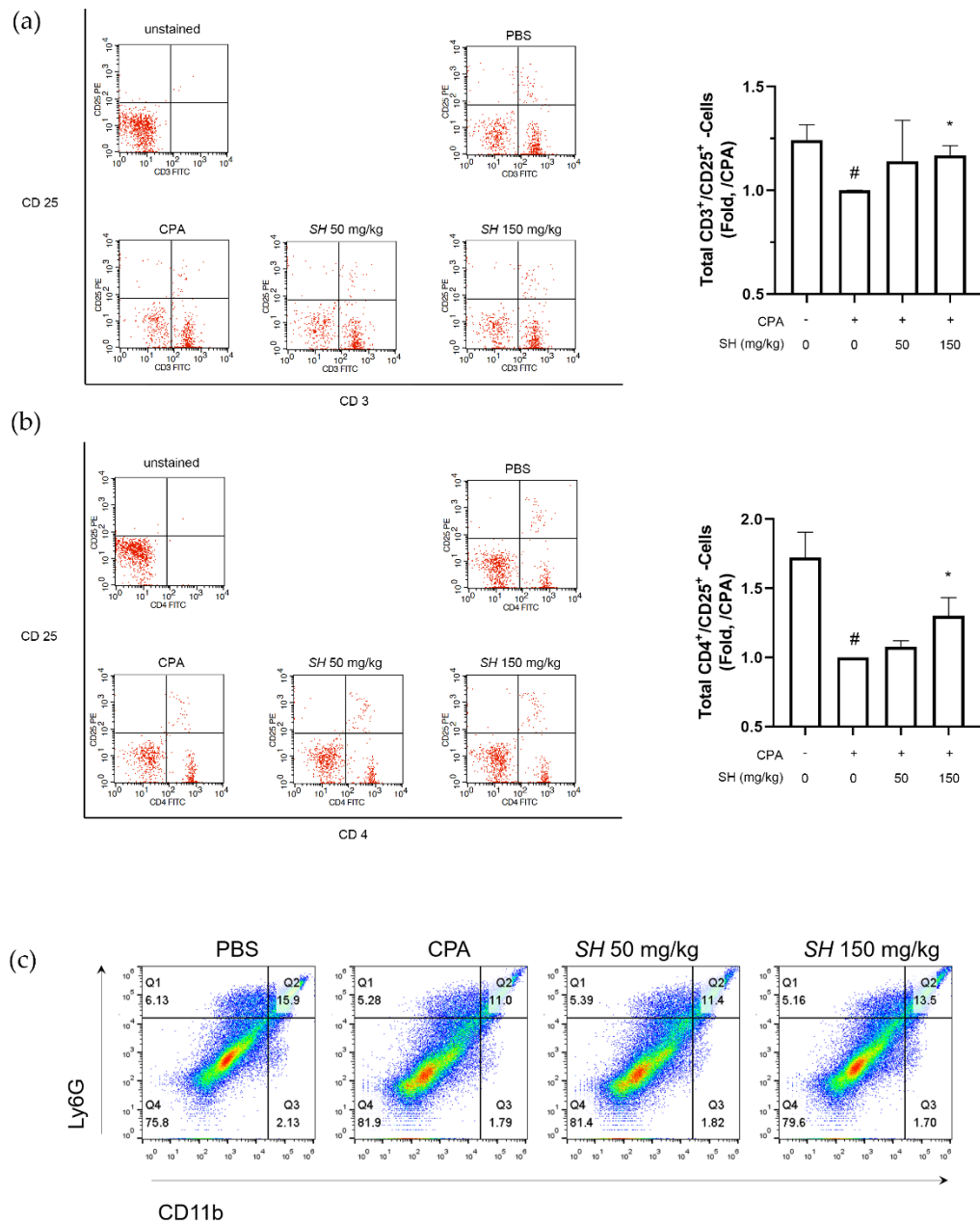


Figure S2. SH increases T cell and neutrophil count in splenocytes. Splenocytes were isolated from the spleen tissue of naïve mice. Flow cytometry was performed to detect (a) CD3⁺/CD25⁺ T cells, (b) CD4⁺/CD25⁺ T cells and (c) CD11b⁺/Ly6G⁺ neutrophils in SH-treated splenocytes.