

Supplementary Materials

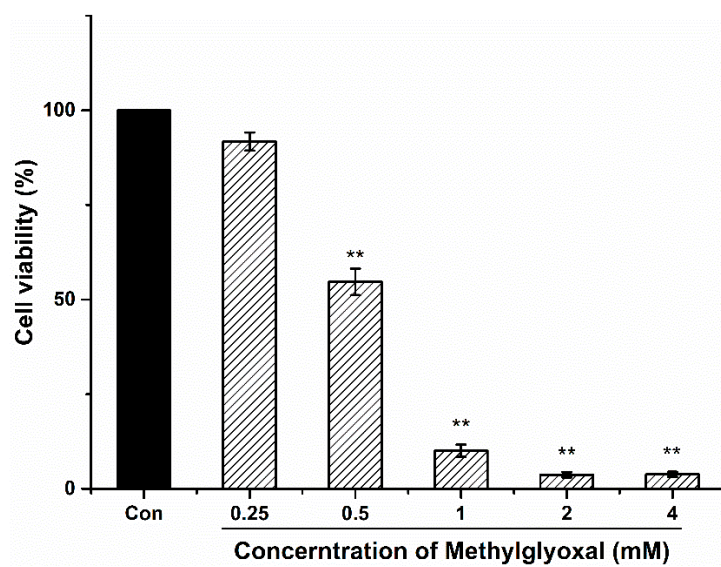


Figure S1. Cell viability of PC-12 cells treated by MG. * $p < 0.05$, ** $p < 0.01$ compared with the control.

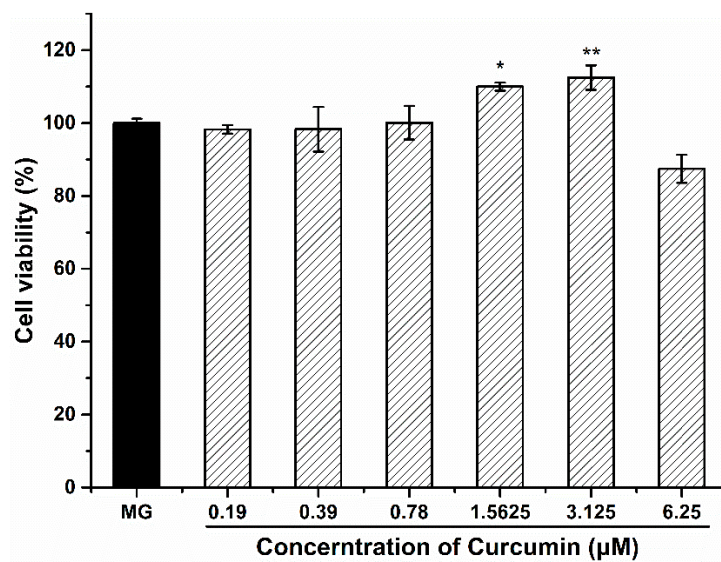
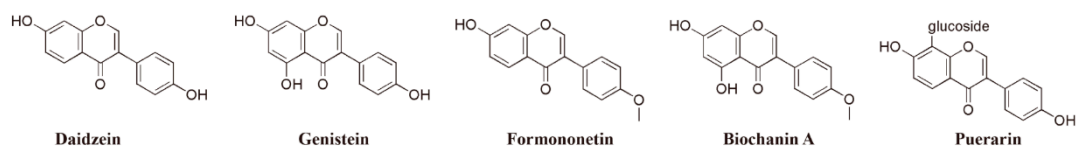


Figure S2. Cell viability of MG-induced PC-12 cells treated by curcumin. * $p < 0.05$, ** $p < 0.01$ compared with the MG group.

Isoflavone



Flavone

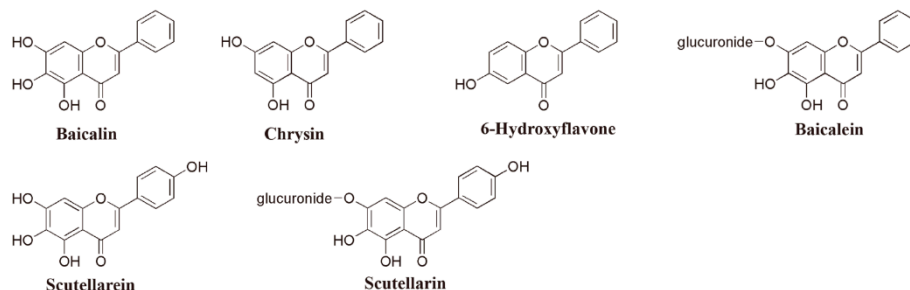


Figure S3. Other flavonoids tested in protective activities on MG-induced PC12 cells.

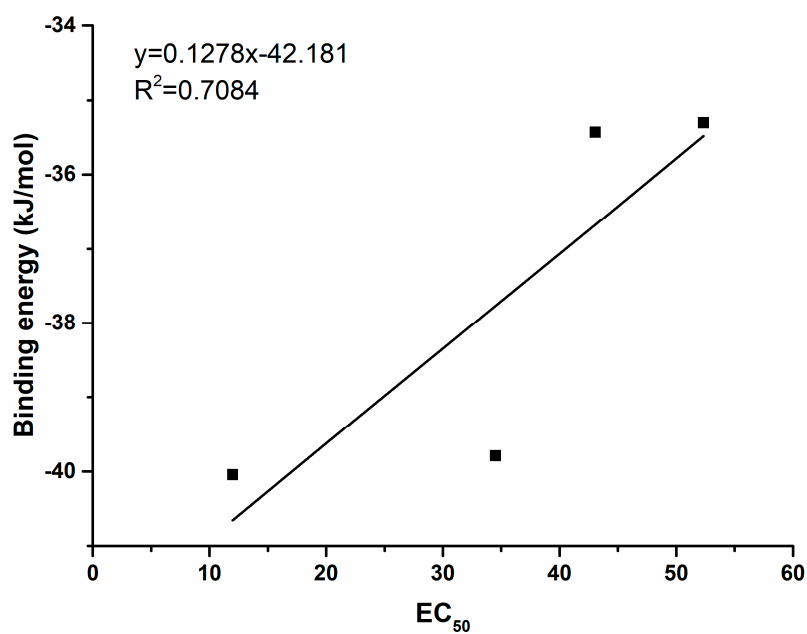


Figure S4. The linear correlation between binding energy of main flavan 3-ols (EC, EGC, ECG, EGCG) and the EC₅₀ for MG-induced PC-12 cells.