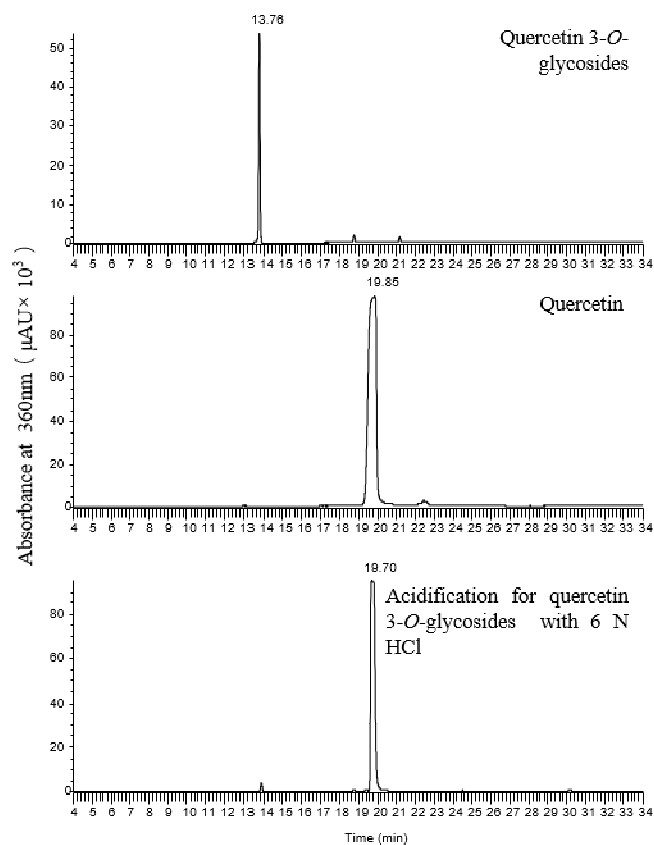
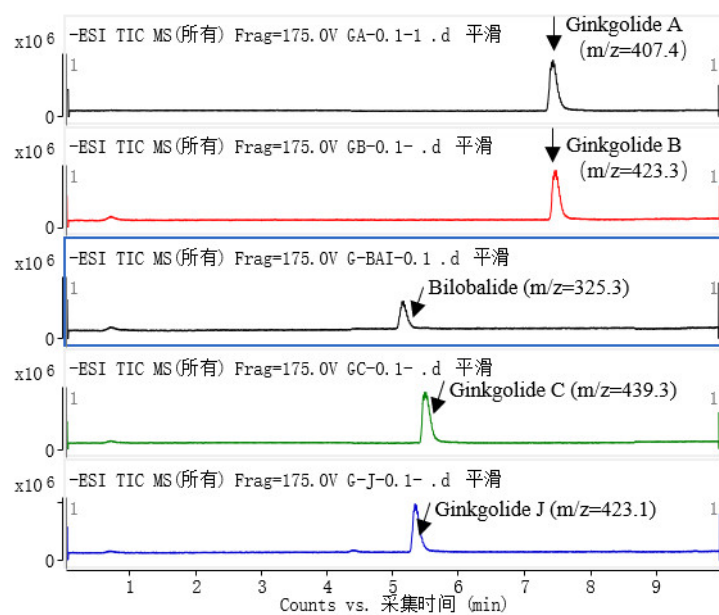


## Supplementary Materials

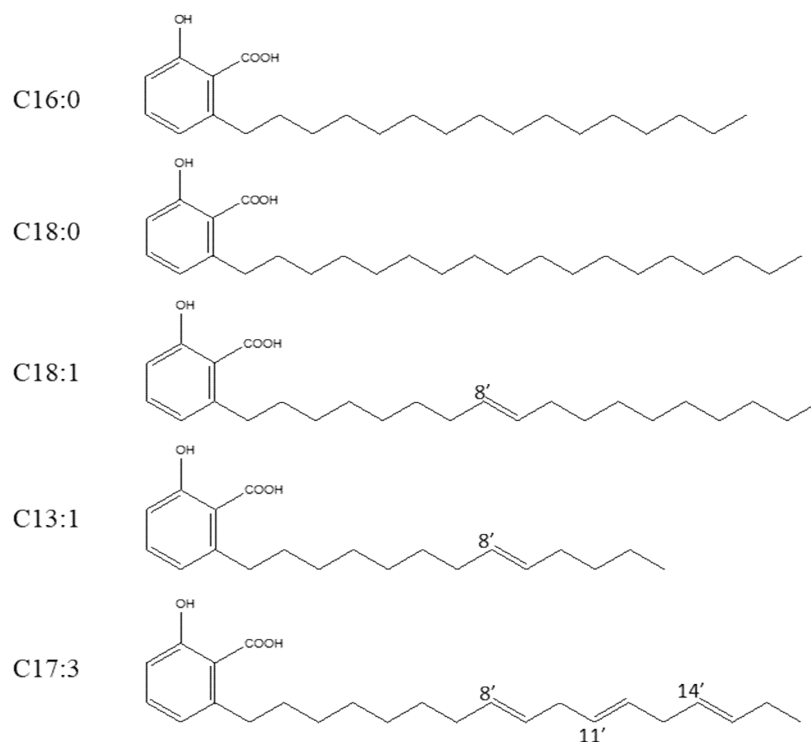


**Figure S1.** The dependability confirmation of acidification methods for flavonol aglycones analyses. The HPLC-MS/MS chromatograms of authentic quercetin 3-*O*-glycoside (upper panel), quercetin (middle panel) and acidification of quercetin 3-*O*-glycosides with 6 N HCl (lower panel).



**Figure S2.** MS ion-current amplifier chromatograms of the TTLs authentic substrates (0.1nmol) at negative mode in ginkgo wine and tea from the GL & YL powder through UHPLC–QTOF-MS. The arrows indicated the specific response signal calculated according to the authentic substrates.





**Figure S4.** The deduced chemical constructions of the five newly-identified ginkgolic acids. The chemical constructions were deduced according to the description before [2, 32] and information in similar compounds identified in other species [33]. The specific ginkgolic acids chemical structures were drawn by ChemDraw Ultra 8.0.