

## Supporting Information

### Simultaneous quantification of opioids in blood and urine by Gas chromatography-Mass spectrometer with modified dispersive solid-phase extraction technique

Sara Yasien<sup>1</sup>, Ejaz Ali<sup>1\*</sup>, Mohsin Javed<sup>2</sup>, Muhammad Muntazir Iqbal<sup>2</sup>, Shahid Iqbal<sup>3\*</sup>, Hamad Alrbyawi<sup>4</sup>, Samar O. Aljazzar<sup>5</sup>, Eslam B. Elkaeed<sup>6</sup>, Ayed A. Dera<sup>7</sup>, Rami Adel Pashameah<sup>8</sup>, Eman Alzahrani<sup>9</sup>, Abd-ElAzim Farouk<sup>10</sup>

<sup>1</sup>University College of Pharmacy, University of the Punjab, Lahore, Pakistan.

<sup>2</sup>Department of Chemistry, School of Science, University of Management and Technology, Lahore 54770, Pakistan.

<sup>3</sup>Department of Chemistry, School of Natural Sciences (SNS), National University of Science and Technology (NUST), H-12, Islamabad, 46000, Pakistan.

<sup>4</sup>Pharmaceutics and Pharmaceutical Technology Department, College of Pharmacy, Taibah University, Medina 42353, Saudi Arabia

<sup>5</sup>Department of Chemistry, College of Science, Princess Nourah bint Abdulrahman University, P.O. Box 84428, Riyadh 11671, Saudi Arabia.

<sup>6</sup>Department of Pharmaceutical Sciences, College of Pharmacy, AlMaarefa University, Riyadh 13713, Saudi Arabia.

<sup>7</sup>Department of Clinical Laboratory Sciences, College of Applied Medical Sciences, King Khalid University, Abha, Saudi Arabia.

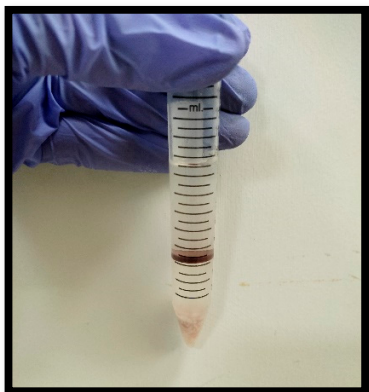
<sup>8</sup>Department of Chemistry, Faculty of Applied Science, Umm Al-Qura University, Makkah 24230, Saudi Arabia.

<sup>9</sup>Department of Chemistry, College of Science, Taif University, P.O. Box 11099, Taif 21944, Saudi Arabia.

<sup>10</sup>Department of Biotechnology College of Science, Taif University, P.O. Box 11099, Taif 21944, Saudi Arabia.

**\*To whom corresponding should be addressed**

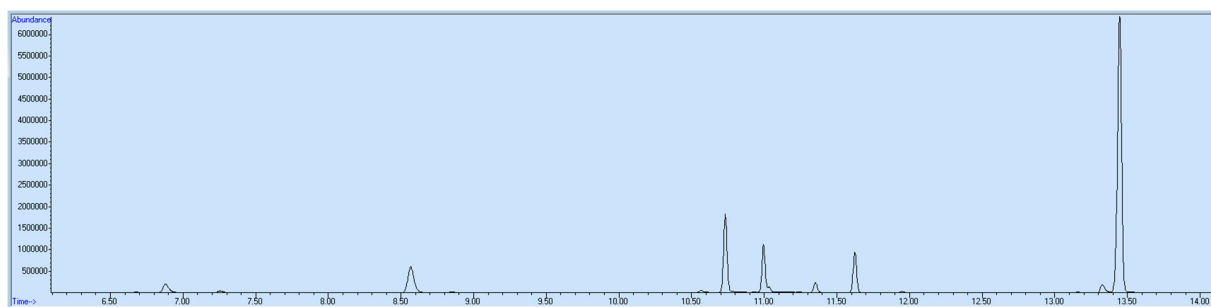
shahidgcs10@yahoo.com (Shahid Iqbal) and ejaz.pharmacy@pu.edu.pk (Ejaz Ali)



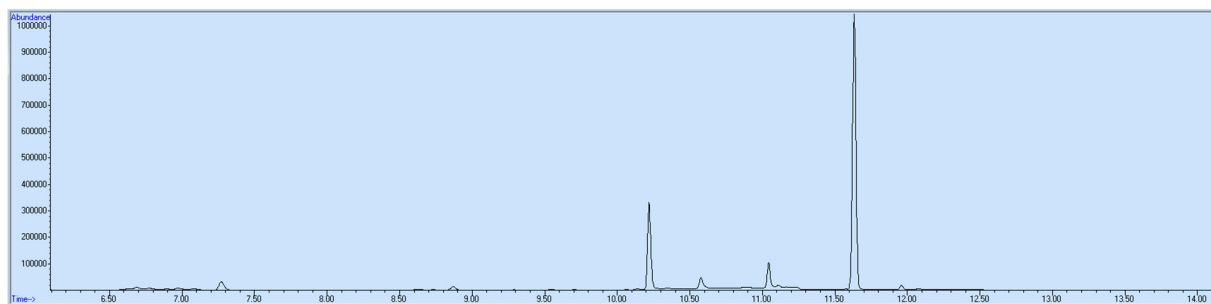
**Figure. S1** *Dispersed phase in blood sample*



**Figure. S2** *Dispersed phase in the urine sample*



**Figure. S3** *Positive QC-Total ion chromatogram*



**Figure. S4** *Negative QC-Total ion chromatogram*