

Supplementary Materials

Evidence of Isomerization in the Michael-Type Thiol-Maleimide Addition: Click Reaction Between L-Cysteine and 6-Maleimidehexanoic acid.

Víctor Alfonso Niño Ramírez ¹, Diego Sebastián Insuasty Cepeda ¹, Zuly Jenny Rivera Monroy^{1*} and Mauricio Maldonado

Table of Contents:

1. Figures:

Figure S1. ¹H-NMR spectrum (400MHz, MeOD, 303 K) of compound 1.

Figure S2. ¹³C-NMR spectrum (400MHz, MeOD, 303 K) of compound 1.

Figure S3. MS/MS for TIC of 4.7 min corresponding to compound 1.

Figure S4. ¹H-NMR spectrum (400MHz, MeOD, 303 K) of compound 2.

Figure S5. ¹³C-NMR spectrum (400MHz, MeOD, 303 K) of compound 2.

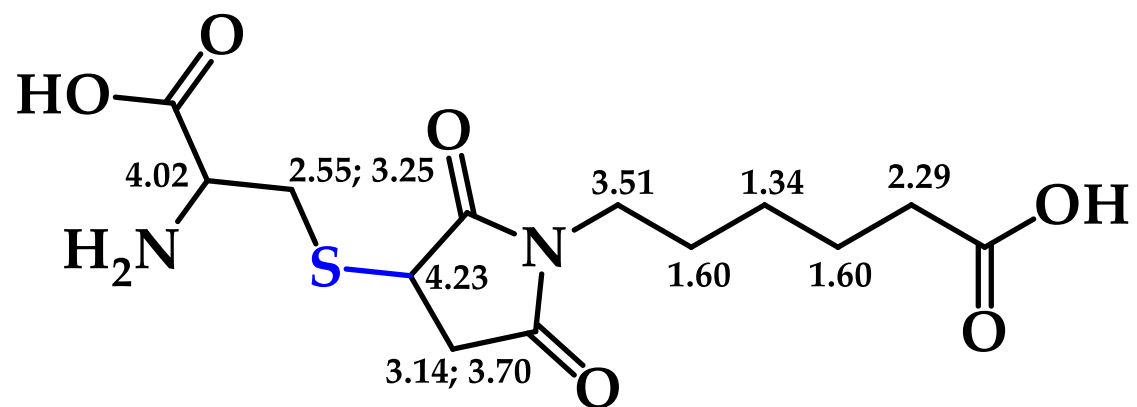
Figure S6. ¹H-NMR COSY spectrum (400MHz, MeOD, 303 K) of compound 2.

Figure S7. ¹H-NMR HSQC spectrum (400MHz, MeOD, 303 K) of compound 2.

Figure S8. ¹H-NMR HMBC spectrum (400MHz, MeOD, 303 K) of compound 2.

Figure S9. MS/MS for TIC of 4.6 min corresponding to compound 2.

Figure S10. ¹H-NMR spectrum (400MHz, MeOD, 303 K) of mix products.



COMPOUND 1: Cys-S-Mhx

P-2 (RMN-210166) BBO
P-2 (RMN-210166) BBO
Neo Avance 1H-MeOD
24 de Marzo de 2021

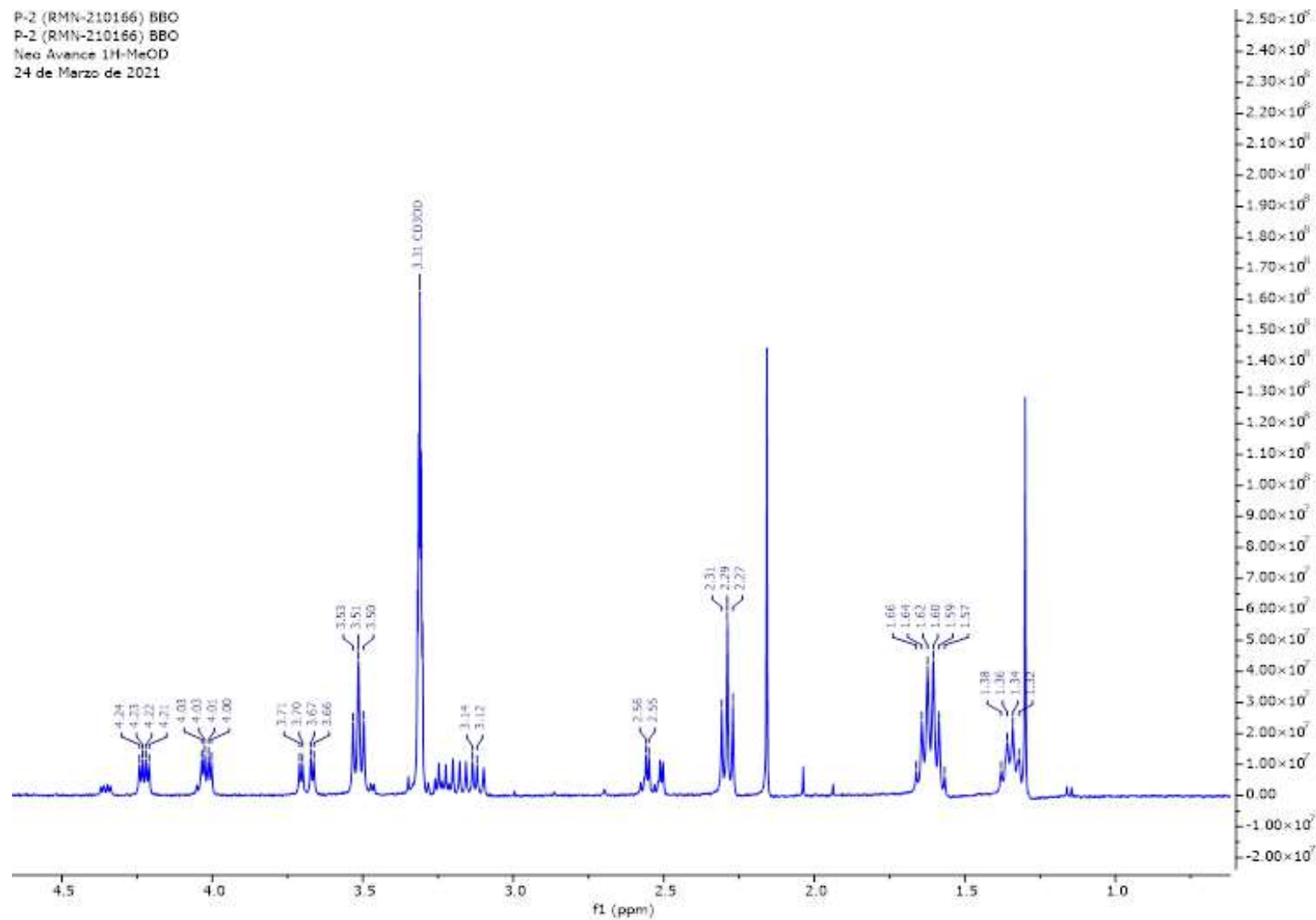


Figure S1. ^1H -NMR spectrum (400MHz, MeOD, 303 K) of compound 1.

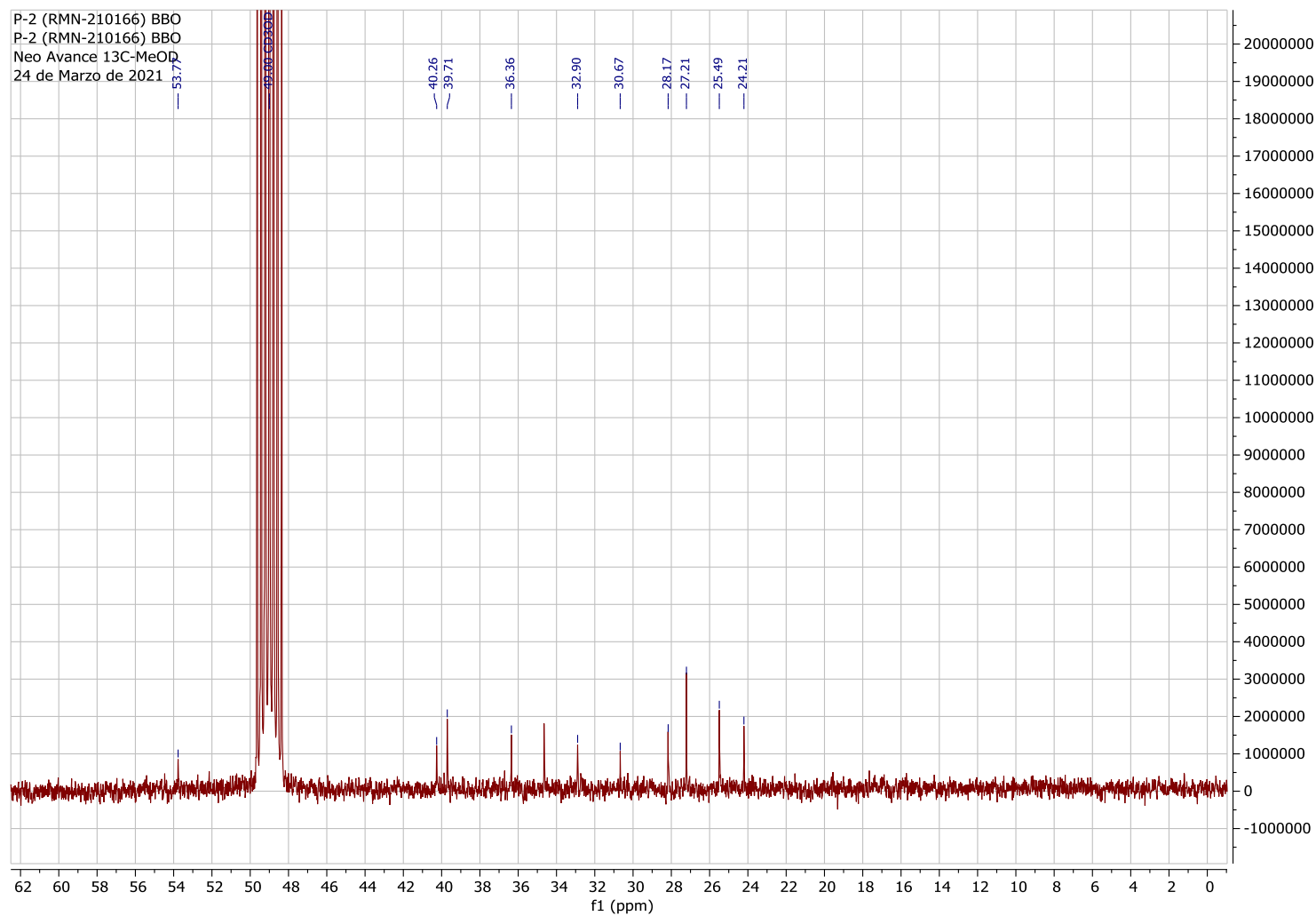


Figure S2. ^{13}C -NMR spectrum (400MHz, MeOD, 303 K) of compound **1**.

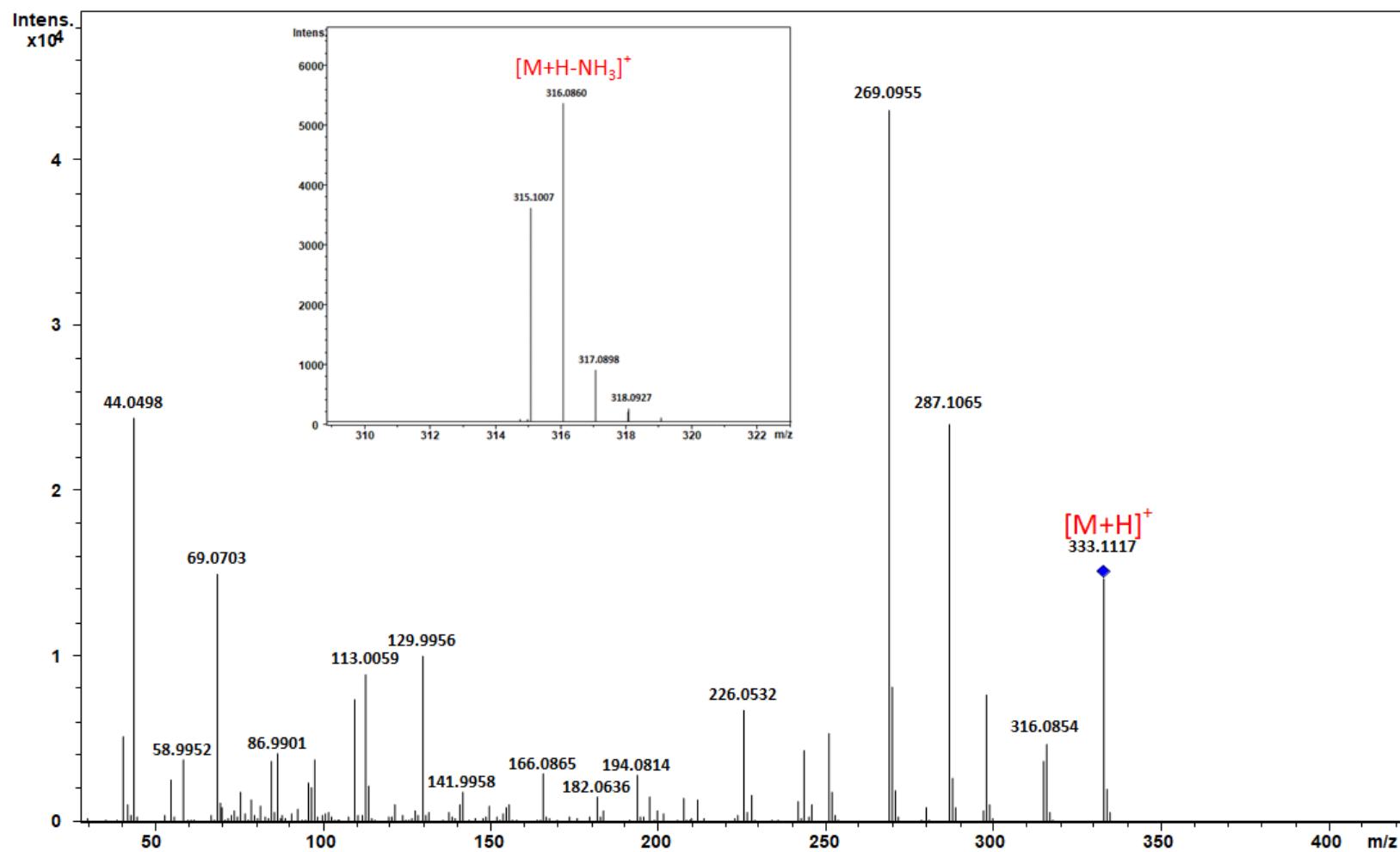
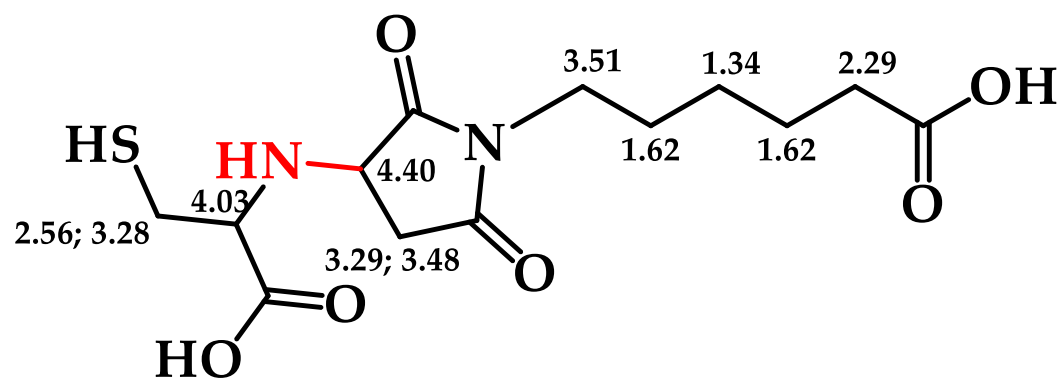


Figure S3. MS/MS for TIC of 4.7 min corresponding to compound 1.



COMPOUND 2: Cys-N-Mhx

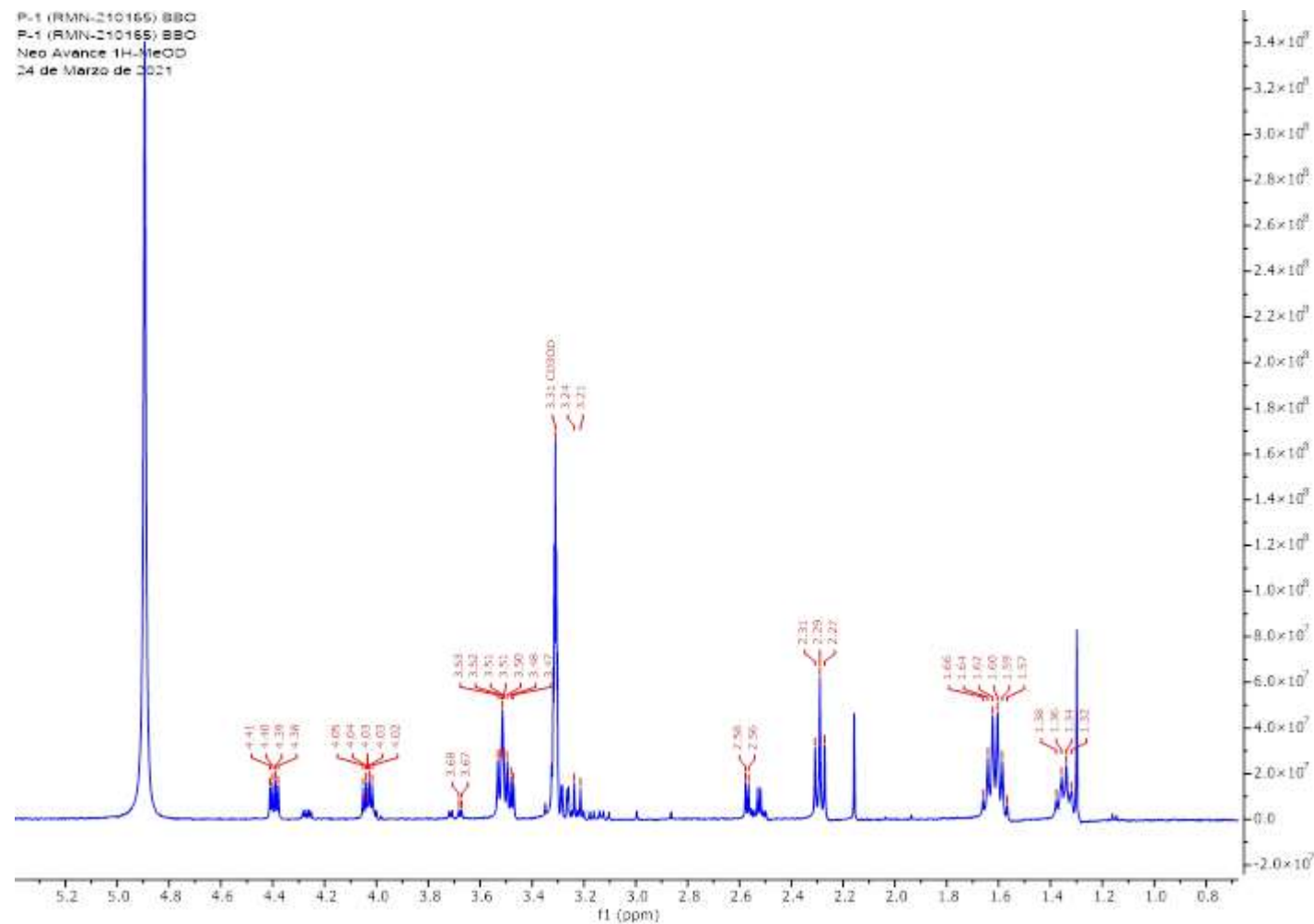


Figure S4. ¹H-NMR spectrum (400MHz, MeOD, 303 K) of compound 2.

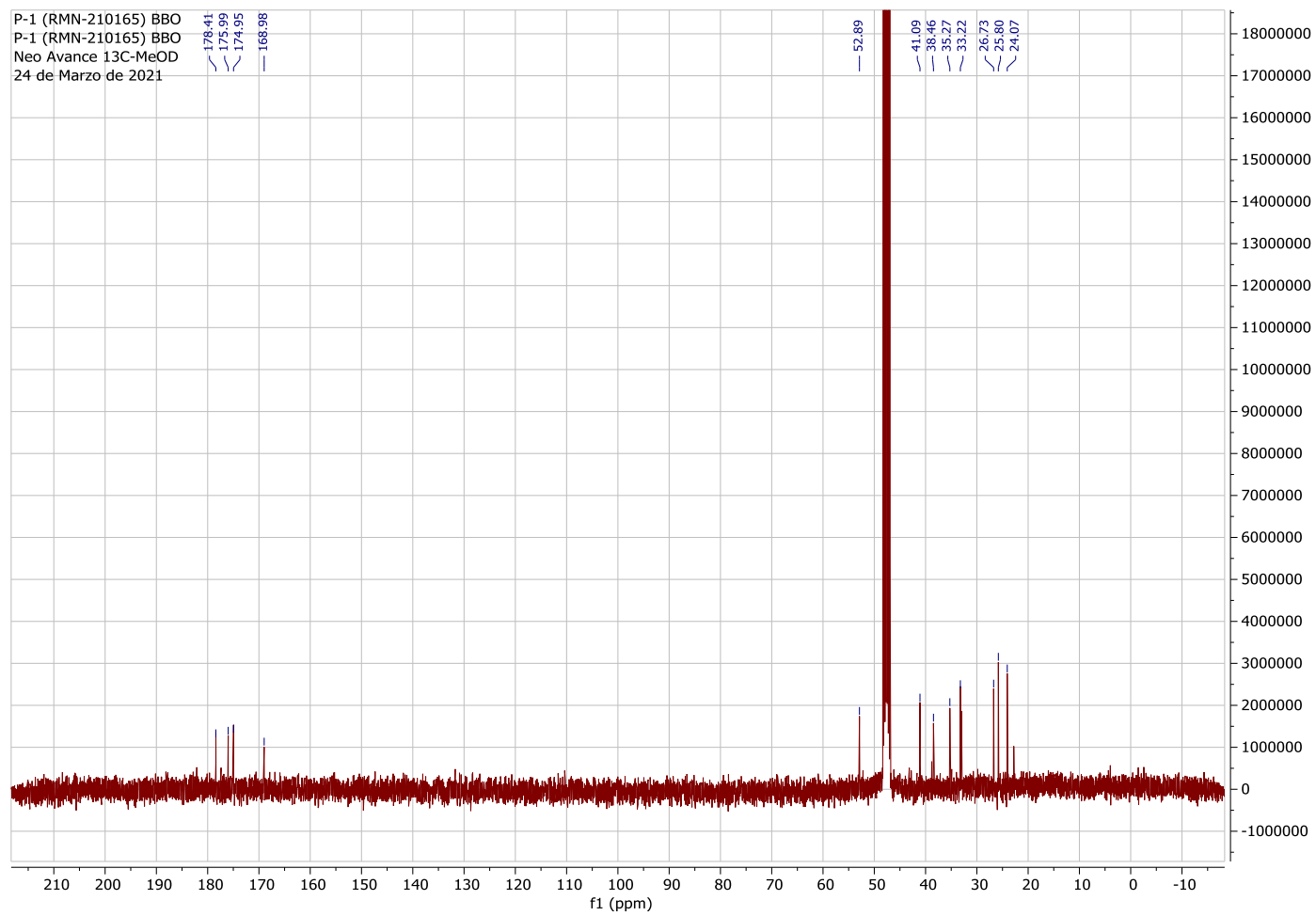


Figure S5. ^{13}C -NMR spectrum (400MHz, MeOD, 303 K) of compound **2**.

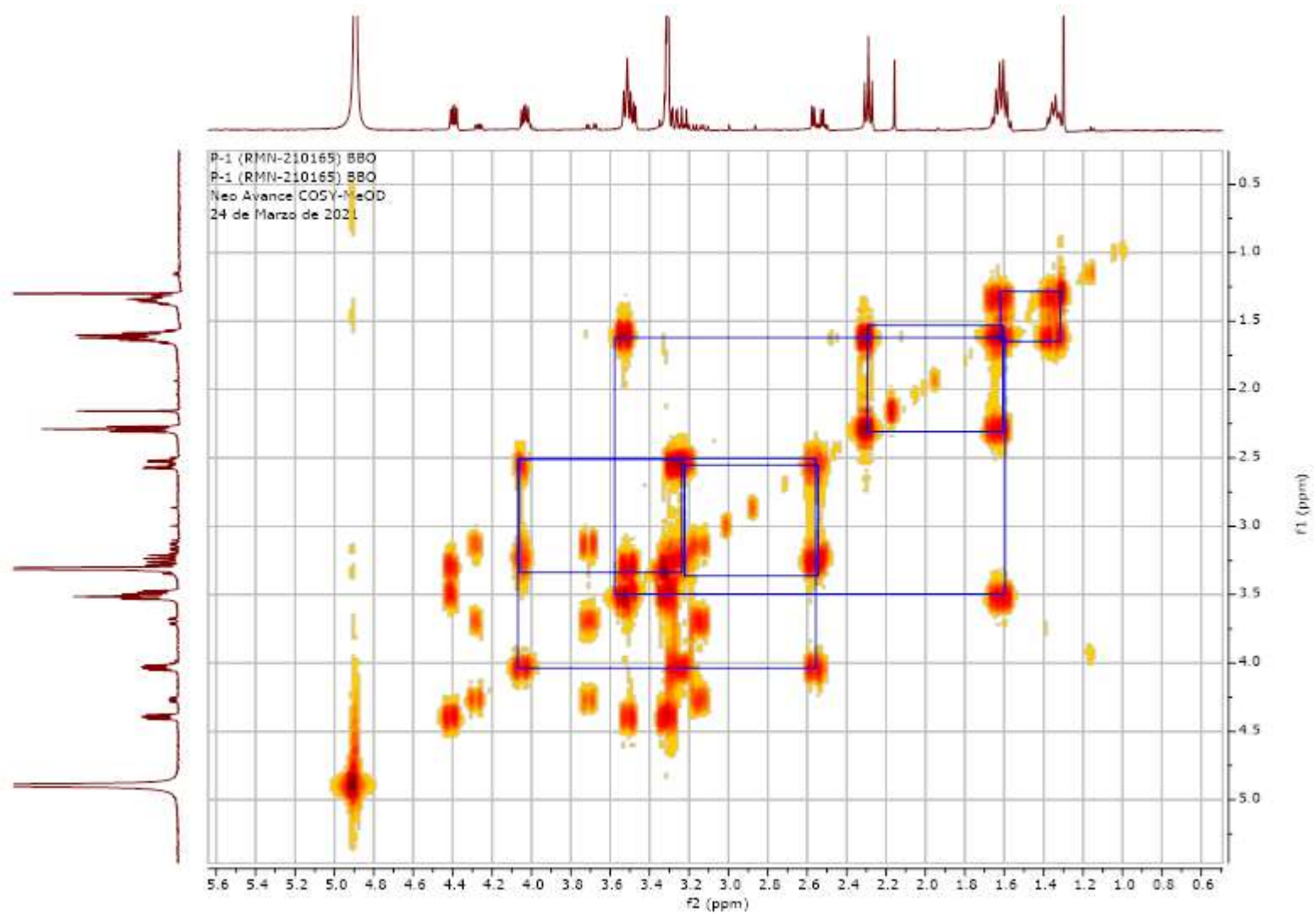


Figure S6. ^1H -NMR COSY spectrum (400MHz, MeOD, 303 K) of compound **2**.

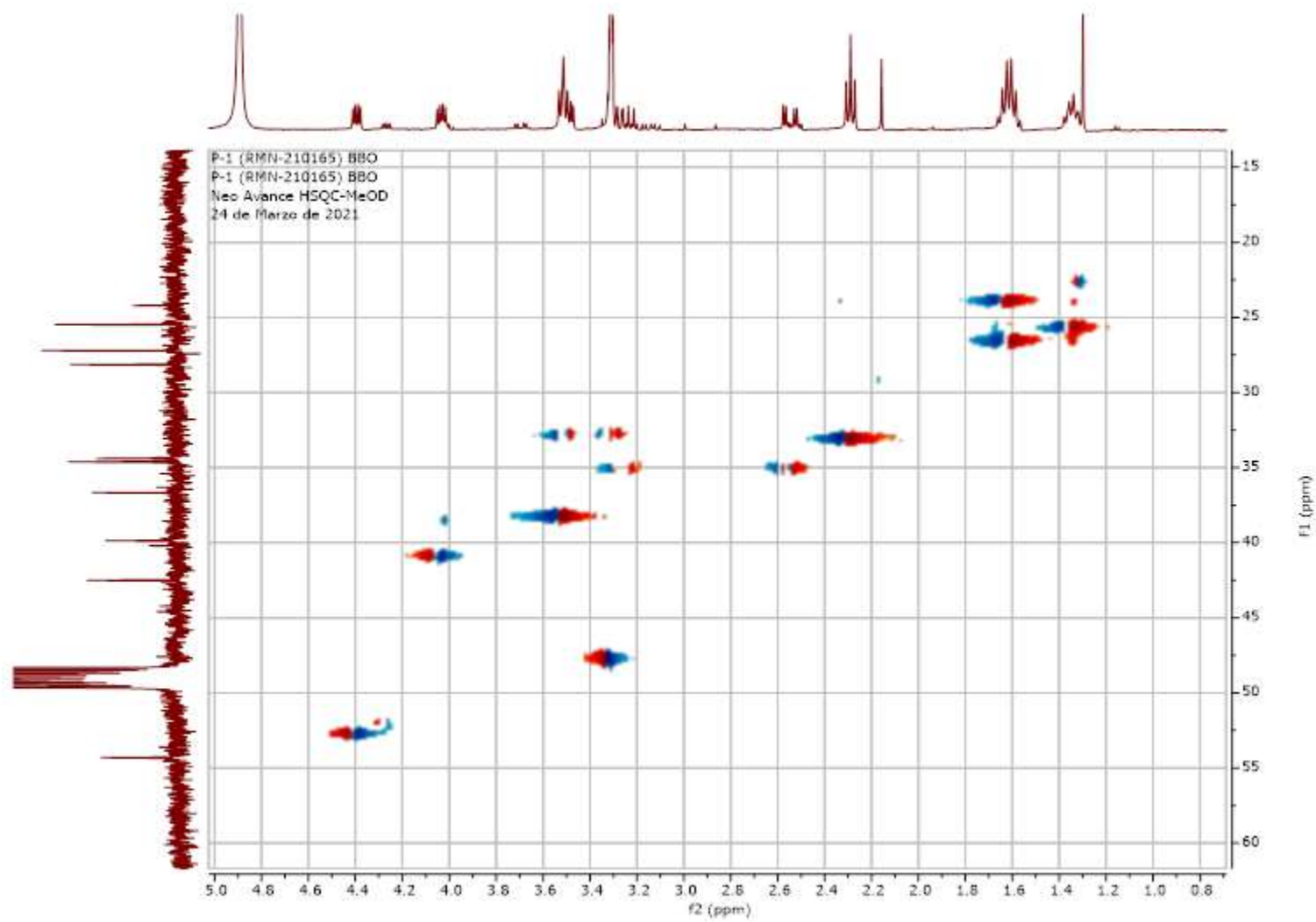


Figure S7. ^1H -NMR HSQC spectrum (400MHz, MeOD, 303 K) of compound 2.

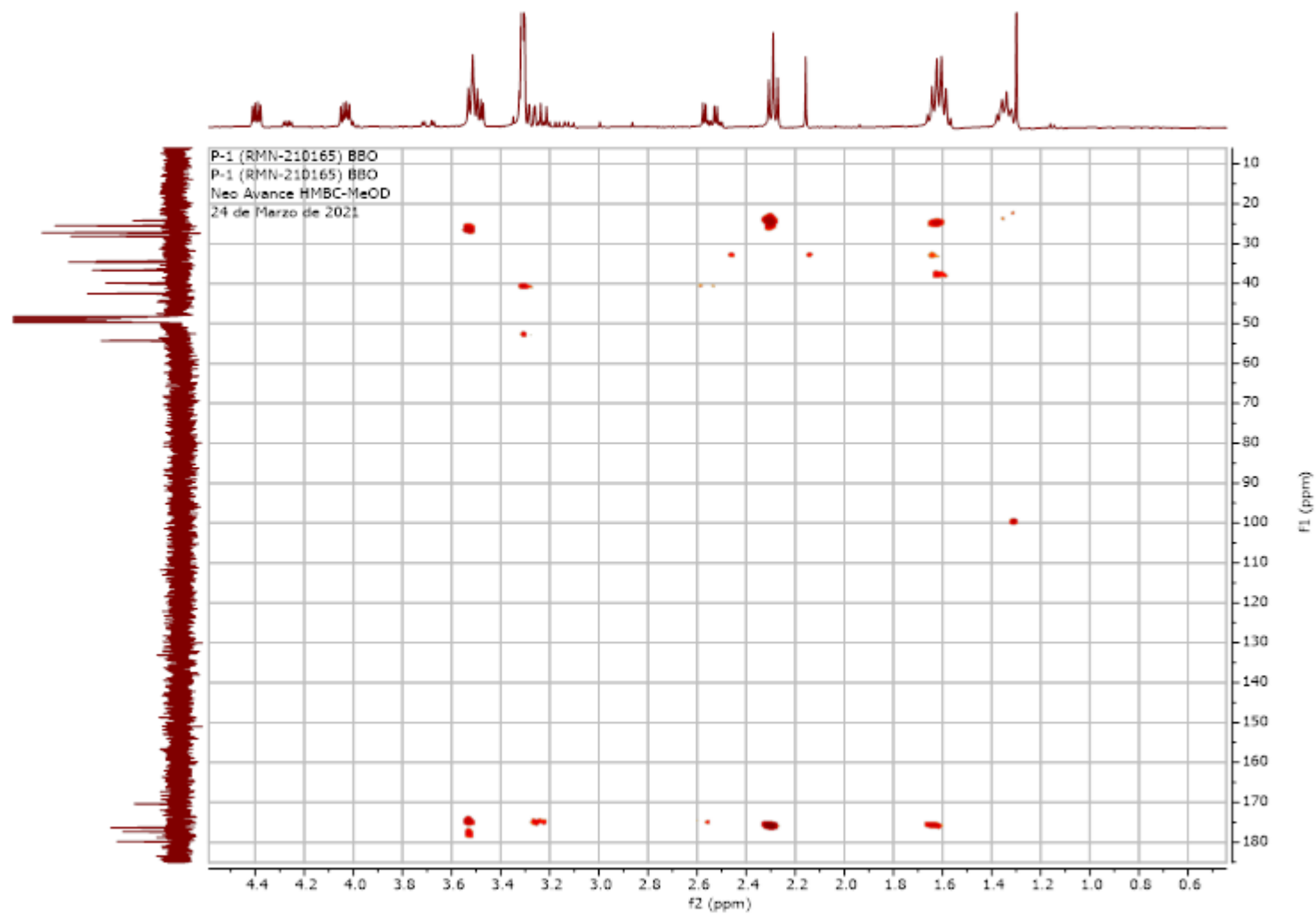


Figure S8. ^1H -NMR HMBC spectrum (400MHz, MeOD, 303 K) of compound **2**.

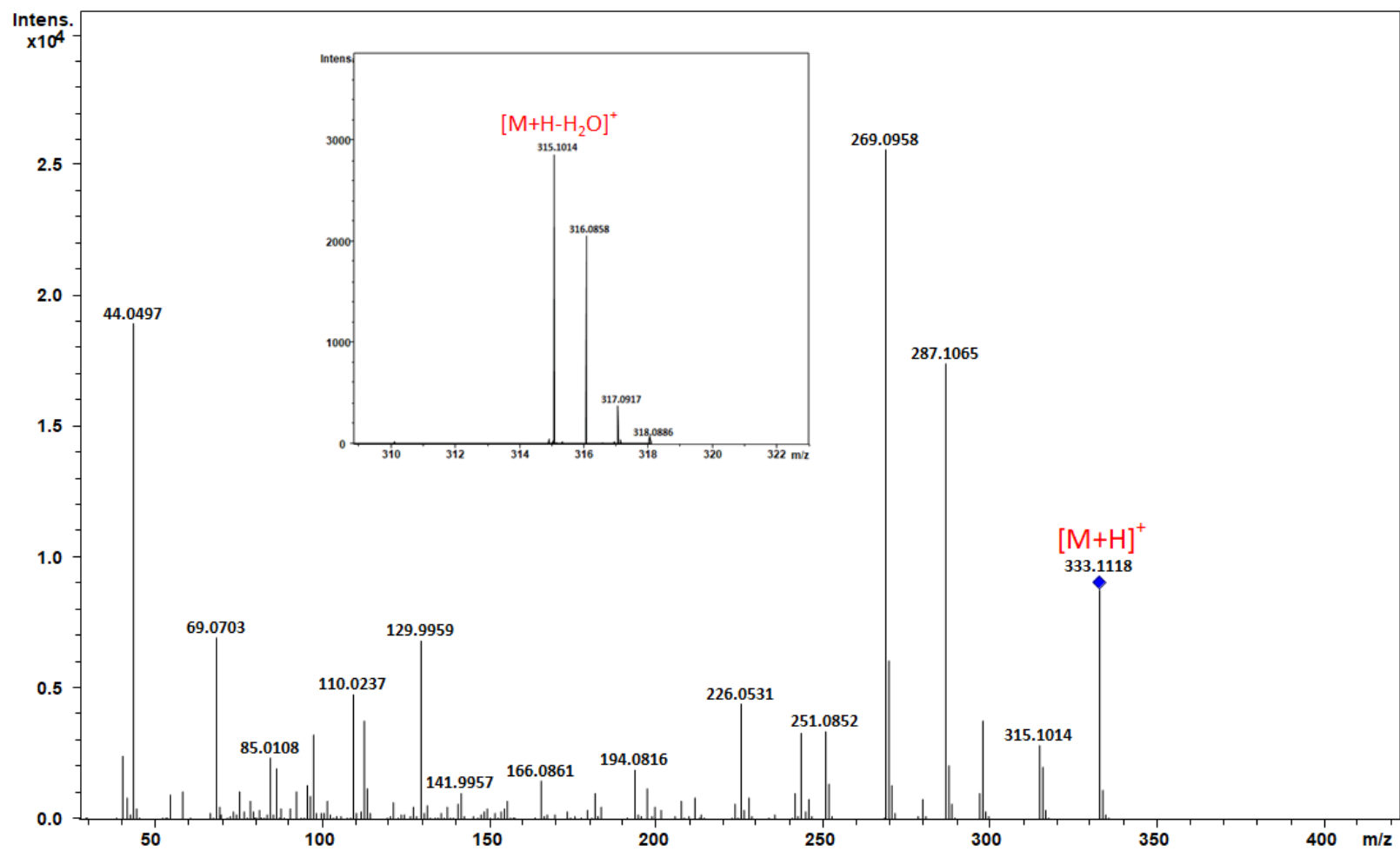


Figure S9. MS/MS for TIC of 4.6 min corresponding to compound 2.

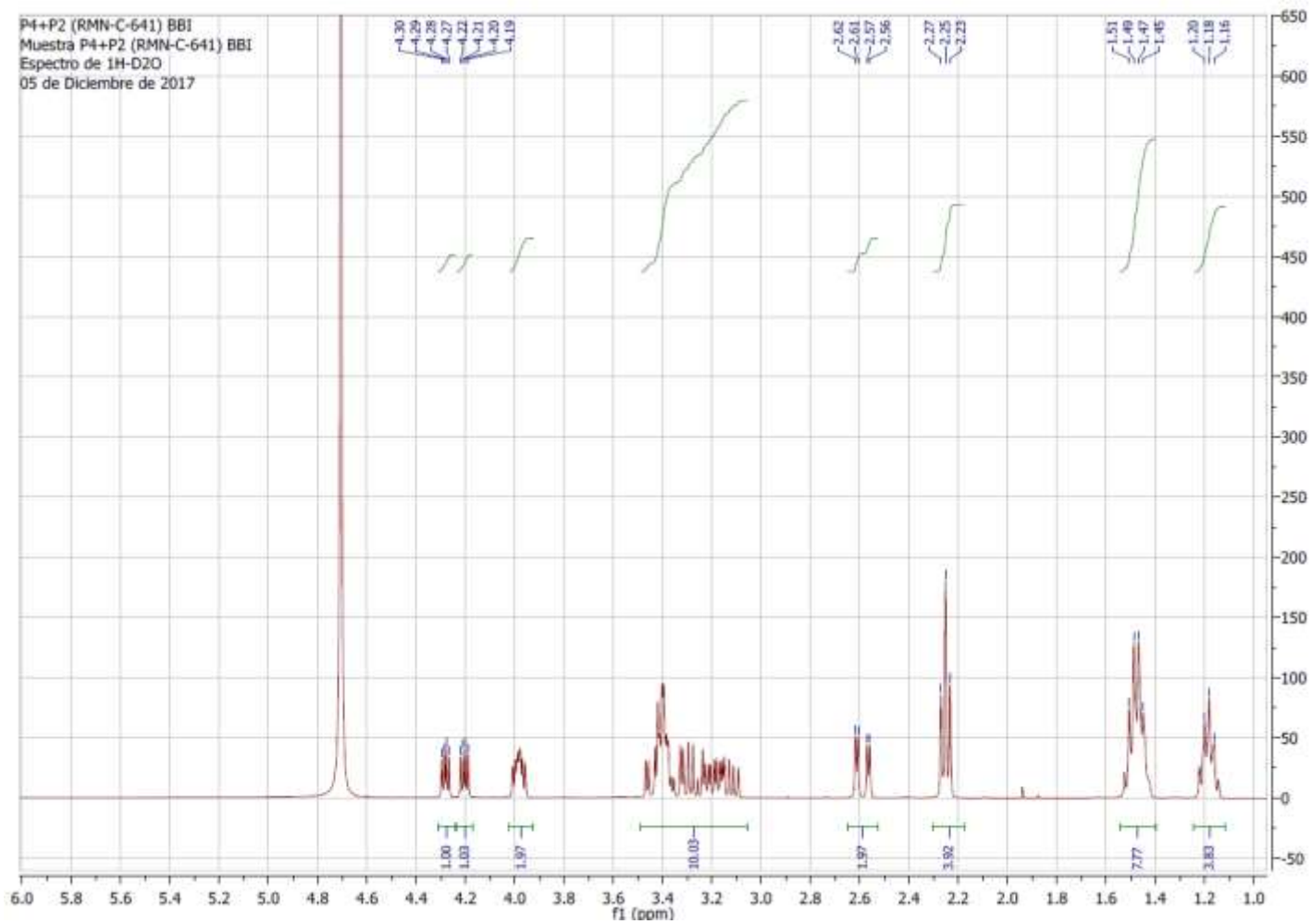


Figure S10. ^1H -NMR spectrum (400MHz, MeOD, 303 K) of mix products.