

Supplementary Materials

# Trichoderma Enzymes for Degradation of Aflatoxin B1 and Ochratoxin A

Irene Dini <sup>1,\*</sup>, Vittoria Alborino <sup>2</sup>, Stefania Lanzuise <sup>2</sup>, Nadia Lombardi <sup>2,3</sup>, Roberta Marra <sup>2,3</sup>, Anna Balestrieri <sup>4</sup>, Alberto Ritieni <sup>1</sup>, Sheridan L. Woo <sup>1,3</sup> and Francesco Vinale <sup>3,5,\*</sup>

<sup>1</sup> Department of Pharmacy, University of Naples Federico II, Via Domenico Montesano 49, 80131 Naples, Italy; alberto.ritieni@unina.it (A.R.); sheridanlois.woo@unina.it (S.L.W.)

<sup>2</sup> Department of Agricultural Sciences, University of Naples Federico II, Via Università 100, 80055 Portici, Italy; agr.vittoria.alborino@gmail.com (V.A.); stefania.lanzuise@unina.it (S.L.); nadia.lombardi@unina.it (N.L.); robmarra@unina.it (R.M.)

<sup>3</sup> BAT Center—Interuniversity Center for Studies on Bioinspired Agro-Environmental Technology, University of Naples Federico II, Via Università 100, 80055 Portici, Italy

<sup>4</sup> Department of Animal Health, Istituto Zooprofilattico Sperimentale del Mezzogiorno, Via della Salute, 2 80055 Portici, Italy; anna.balestrieri@izsmpportici.it

<sup>5</sup> Department of Veterinary Medicine and Animal Productions, University of Naples Federico II, Via Federico Delpino 1, 80138 Naples, Italy

\* Correspondence: irdini@unina.it (I.D.); frvinale@unina.it (F.V.)

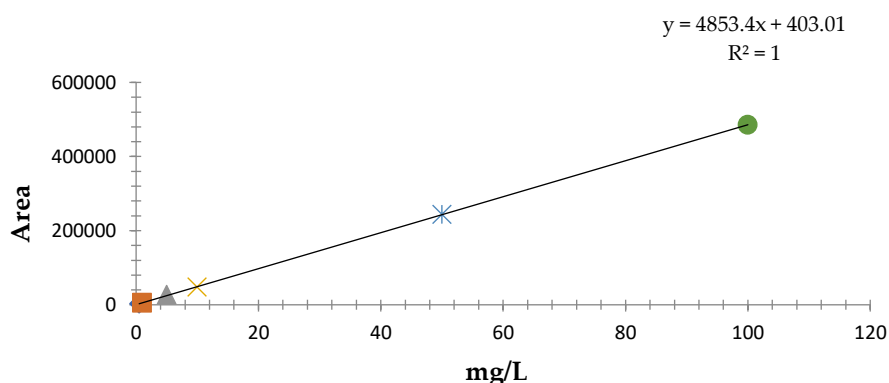


Figure S1. Aflatoxin B1 calibration line.

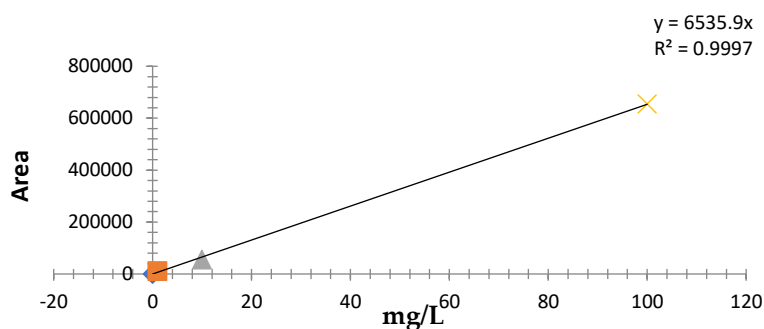


Figure S2. Ochratoxin A calibration line.