

Supplementary Materials

Significant Enhancement of the Capacity and Cycling Stability of Lithium-Rich Manganese-Based Layered Cathode Materials via Molybdenum Surface Modification

Yijia Shao [†], Zhiyuan Lu [†], Luoqian Li, Yanni Liu, Lijun Yang, Ting Shu, Xiuhua Li and Shijun Liao ^{*}

The Key Laboratory of Fuel Cell Technology of Guangdong Province, School of Chemistry and Chemical Engineering, South China University of Technology, Guangzhou 510641, China; ceyjshao@mail.scut.edu.cn (Y.S.); 15625159545@163.com (Z.L.); 202020123782@mail.scut.edu.cn (L.L.); liuyanniscut@163.com (Y.L.); yanglijun028@gmail.com (L.Y.); shuting6418@163.com (T.S.); lixiuhua@scut.edu.cn (X.L.)

^{*} Correspondence: chsjliao@scut.edu.cn; Tel.: +86-20-871-1358

[†] These authors contributed equally to this work.

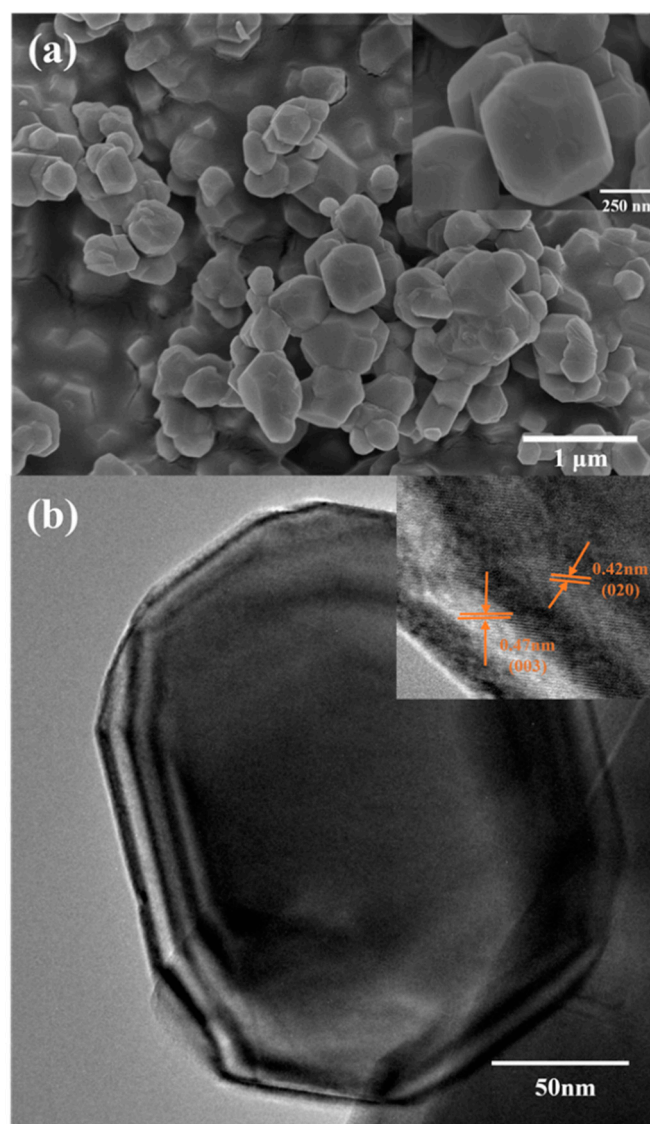


Figure S1. SEM (a) and HRTEM (b) of LMR sample.

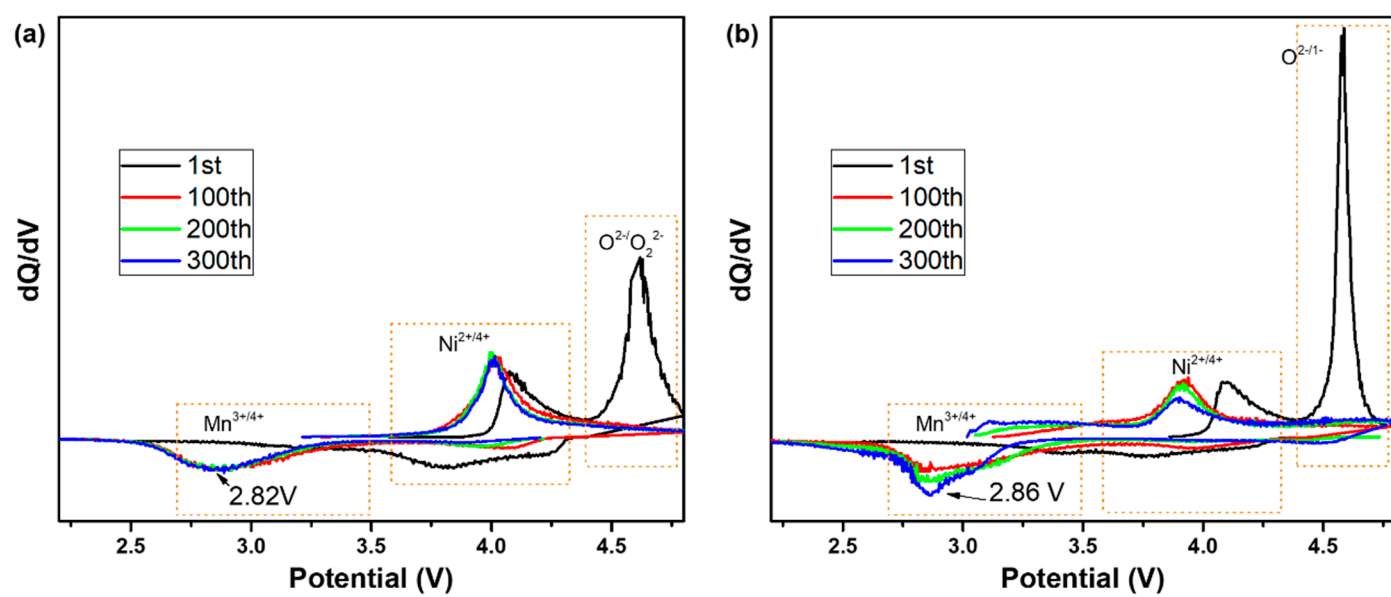


Figure S2. The dQ/dV curves of LMR (a) and LMR-Mo (b).