

Supplementary information

Table S1 Primer sequences used for real-time PCR experiments

	Genes	Sequences
1	GAPDH	Forward 5'-AACTTTGGCATTGTGGAAGG-3' Reverse 5'-ACACATTGGGGGTAGGAACA
2	MITF	Forward 5'-TGAAGGTCGGTGTGAACGGATTTCGC-3' Reverse 5'-CATGTAGGCCATGAGGTCCACCAC-3'
3	Tyrosinase	Forward 5'-GACGGTCACTGCAGACTTTG-3' Reverse 5'-GCCATGACCAGGATGAC-3'
4	TRP-1	Forward 5'-ACTTCACTCAAGCCAACTGC 3' Reverse 5'-AGCTTCCCATCAGATGTCGT 3'
5	TRP-2	Forward 5'GCTCCAAGTGGCTGTAGACC 3' Reverse 5' AATGCAGTGGCTTGGAATC 3'
6	HPRT1	Forward 5' TGCTCGAGATGTGATGAAGG 3' Reverse 5' TCCCCTGTTGACTGGTCATT 3'
6	TNF- α	Forward 5' CAGAGGGCCTGTACCTCATC 3' Reverse 5' GGAAGACCCCTCCCAGATAG 3'
7	MMP-2	Forward 5' GCTGTATGTCCTGTCGCTCA 3' Reverse 5' TGCTGAAAGAAATGCACACC 3'
8	MMP-9	Forward 5' TCTTCCCTCCCATCAGTTTG 3' Reverse 5' GGACACCAGACCAAGGAAGA 3'
9	MMP-13	Forward 5' CTTCTGGTCAACCTCTCCA 3' Reverse 5' CCAATGGCACCTTCTCTTT 3'
10	COL1A1	Forward 5' GCAAGATGGAGTCAGGGAAA 3' Reverse 5' AGCCAGCAGATCGAGAACAT 3'
11	Filaggrin	Forward 5' CCGATATCAGGACACAAGCA 3' Reverse 5' TGTTTCTCTTGGGCTCTTGG3'

Figure S1 HPLC chromatogram analysis of total resveratrol product (resveratrol and piceid content) of methanolic DJ 526 and yeast extract-treated DJ526 seed extracts. Piceid presents at retention time 16.8 min. and resveratrol presents at 27.6 min.

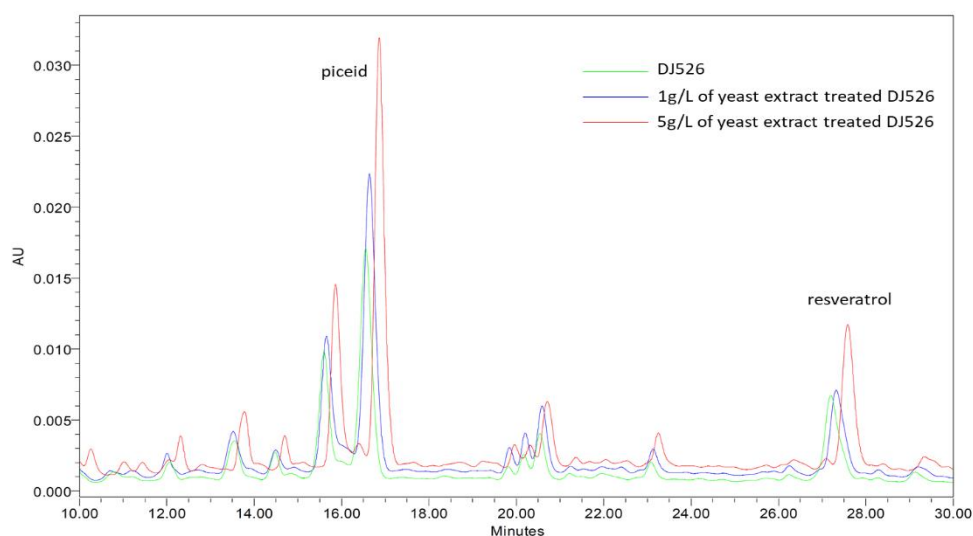


Figure S2 Calibration curve of vitamin C at concentration 0.0039065 to 0.25 mg/mL.

