

Structural Features of Oxyapatite

Natalia V. Bulina ^{1,*}, Leon A. Avakyan ², Svetlana V. Makarova ¹, Igor B. Orehov ¹
and Vladimir S. Bystrov ³

¹ Institute of Solid State Chemistry and Mechanochemistry, Siberian Branch of the Russian Academy of Sciences, 630128 Novosibirsk, Russia

² Physical Faculty, Southern Federal University, 344059 Rostov-on-Don, Russia

³ Institute of Mathematical Problems of Biology, Keldysh Institute of Applied Mathematics, Russian Academy of Sciences, 142290 Pushchino, Russia

* Correspondence: bulina@solid.nsc.ru

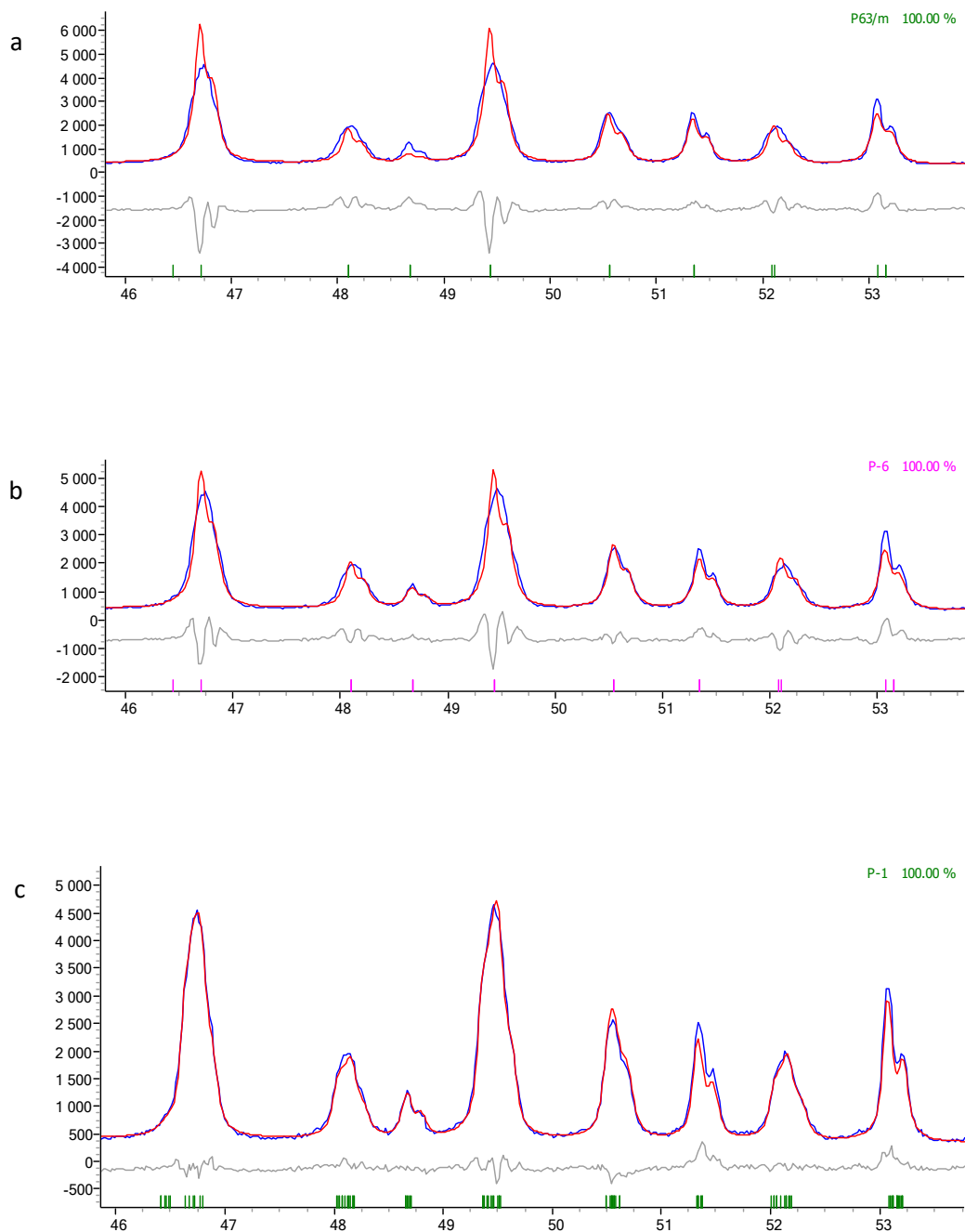


Figure S1. Rietveld refinement for sample B in space group $P6_3/m$ (a), $P\bar{6}$ (b) and $P\bar{1}$ (c)

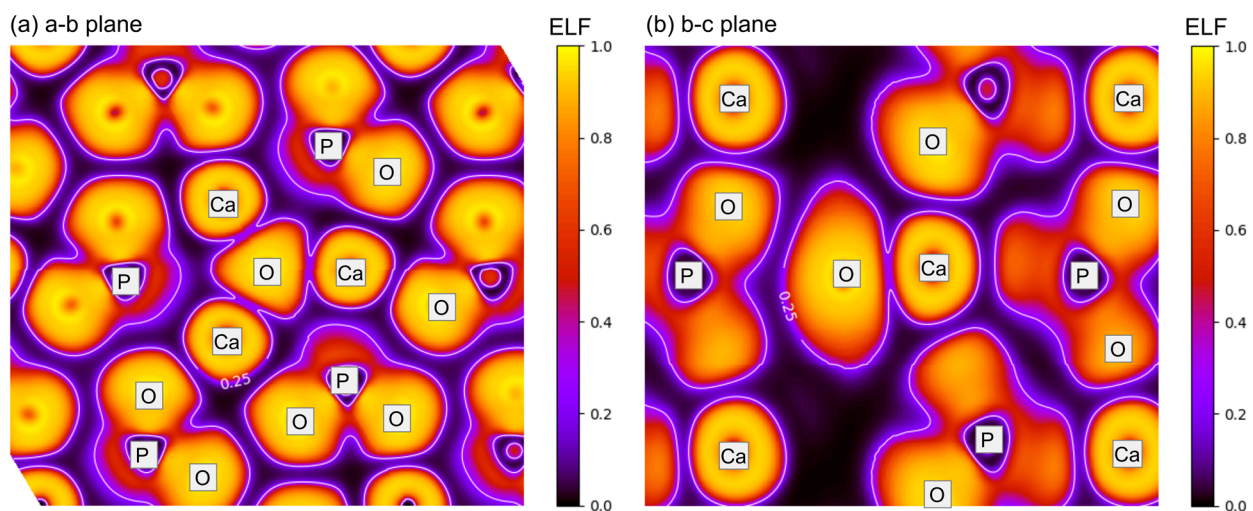


Figure S2. Electron localization function (ELF) maps for OA model. (a) a-b plane view, (b) b-c plane view. The view planes are passing through O anion in the hexagonal channel and one of near Ca cation. Other atoms are approximately marked on the figure.

Table S1. Results of element analysis obtained by X-ray fluorescent spectroscopy

Element	Concentration (wt.%)	Concentration (at.%)
Al	0.34	0.48
Si	0.21	0.27
P	31.30	37.00
Cl	0.17	0.18
Ca	67.93	62.05
Fe	0.04	0.03