

Construction and destruction of Bontău composite volcano in the extensional setting of Zărand Basin during Miocene (Apuseni Mts., Romania)

Ioan Seghedi*, Viorel M. Mirea and Gabriel C. Ștefan

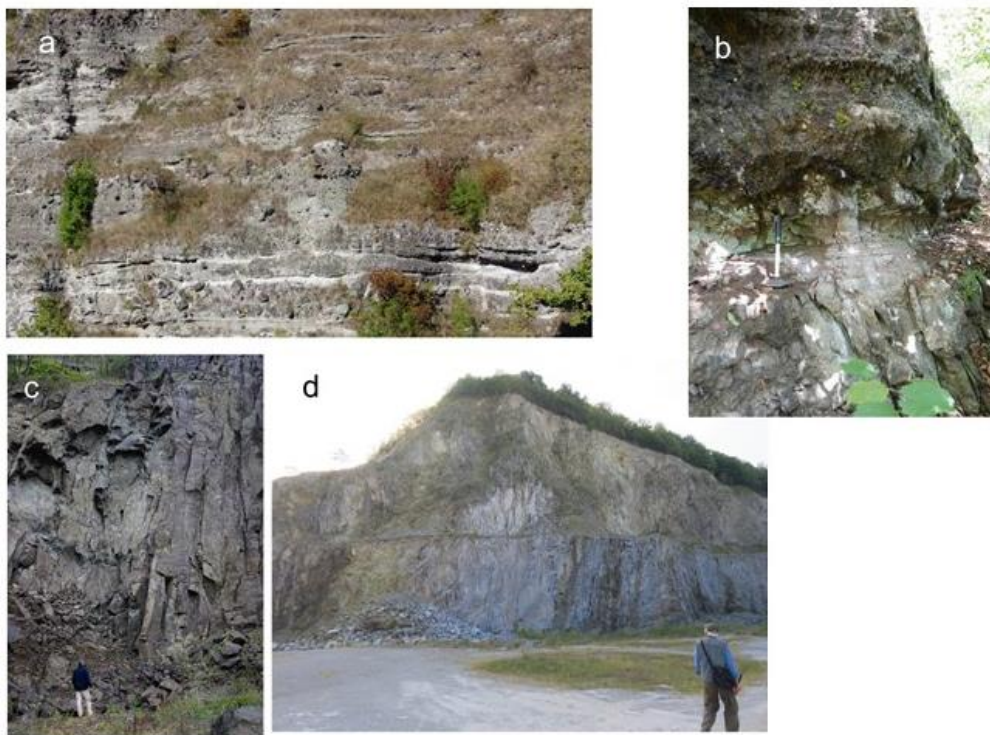


Figure S1. Photo details of the Domes: (a) Dm size parallel and cross bedded variable sorted whitish tuff in succession with various pyroclastic vlock/pumice and ash breccias (detail of the Figure. 5a), (b) ~2m sequence of the phreatomagmatic tuff covered by a clast-supported breccia, probably a block and ash flow deposit; (c) Vertical jointing in quarry at the Vârfuri lava Dome complex; (d) Vertical jointing up to the top of Aciuța lava dome quarry.



Figure S2. Photo details of the DADs: (a) DA monolithic breccia showing mechanically crushed dm size angular blocks (proximal WDA), (b) Contact between a massive heterolithic DA breccia (DA) and debris flow deposits (DF) developed in a fan shape (distal WDA, at Iacobini), (c) Massive heterolithic DA breccia containing altered andesite clast (A) and angular – shaly fresh andesite (Distal NDA), (d) Sequences in stratified debris flow deposits of dm to m size, dominated by angular/subangular pyroxene andesite clasts.