

Supplementary info

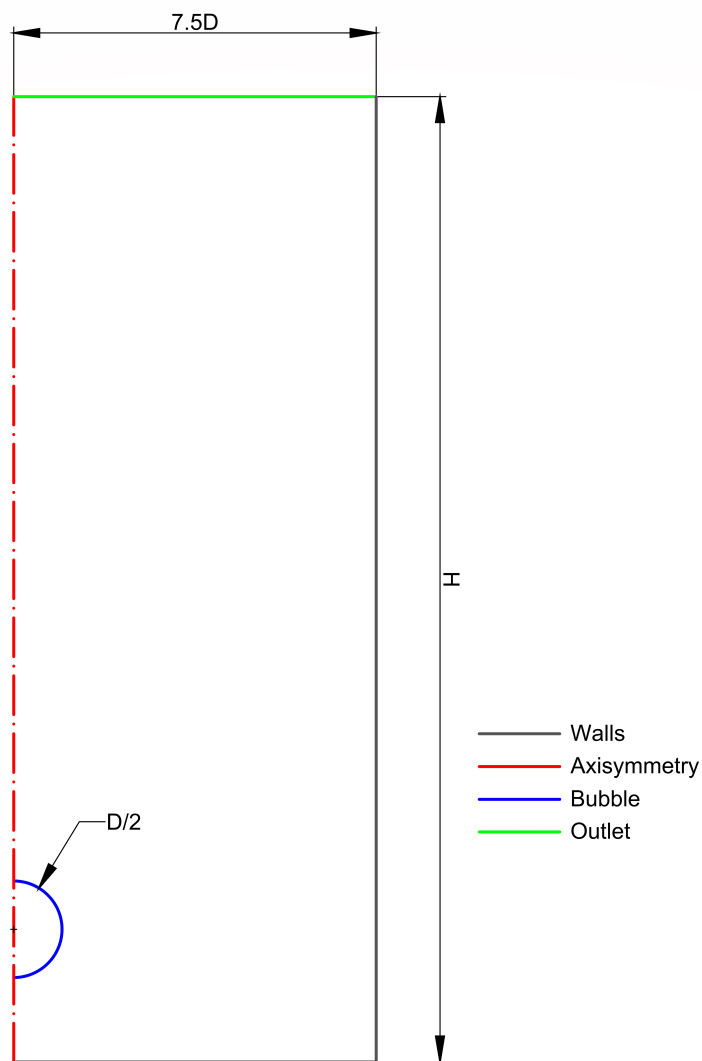
## Supplementary Info: Comparison of Two Solvers for Simulation of a Single Bubble Rising Dynamics: COMSOL vs Fluent

Jakub Crha<sup>1,2</sup>, Pavlína Basařová<sup>1,\*</sup>, Marek Růžička<sup>2</sup>, Ondřej Kašpar<sup>1</sup>, Mária Zedníková<sup>2</sup>

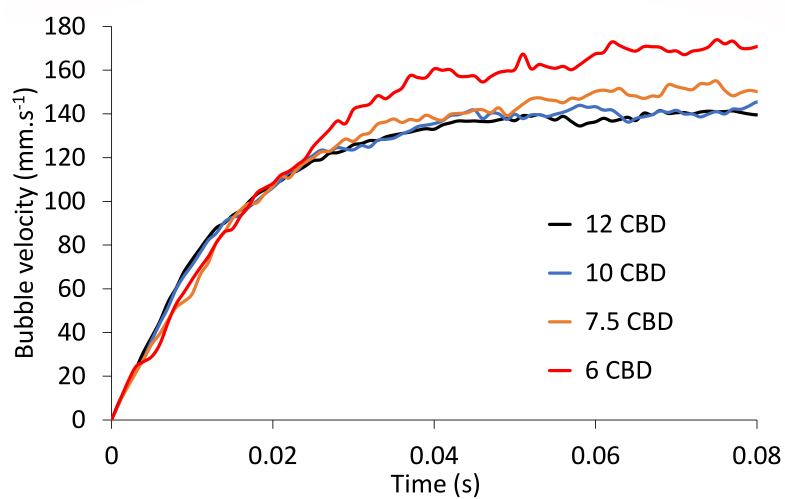
<sup>1</sup> Department of Chemical Engineering, University of Chemistry and Technology Prague, Technická 3, 166 28 Prague, Czech Republic;

<sup>2</sup> Institute of Chemical Process Fundamentals of the Czech Academy of Sciences, Rozvojová 1, 165 02 Prague, Czech Republic;

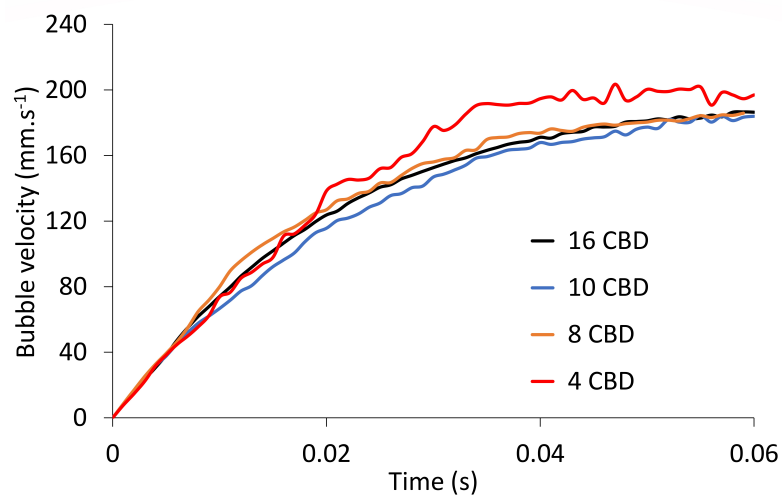
\* Correspondence: pavlina.basarova@vscht.cz



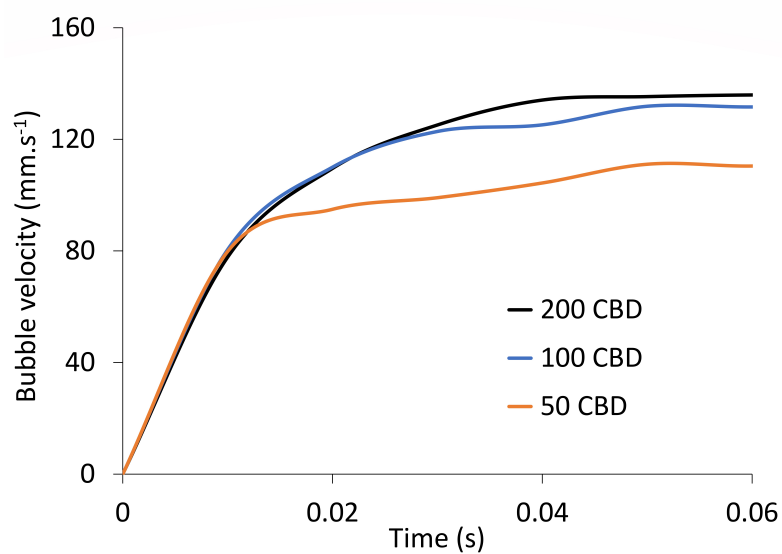
**Figure S1.** Scheme of the computational domain used in both CFD solvers.



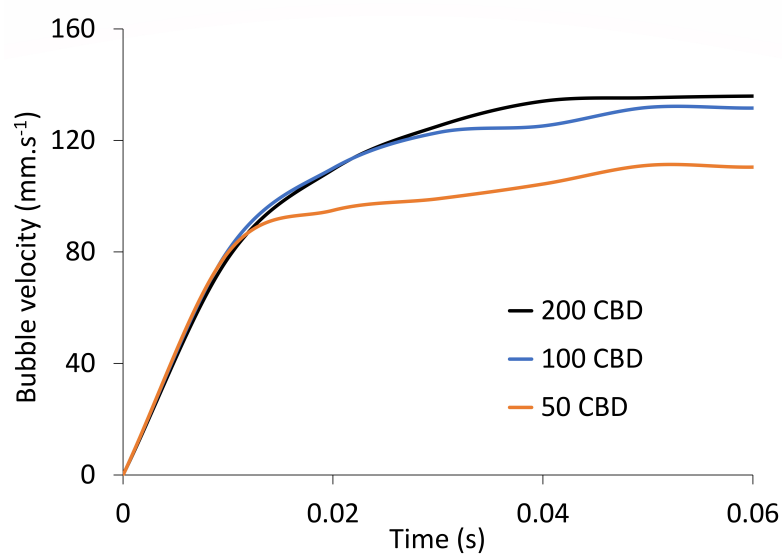
**Figure S2.** Comparison of time-dependent velocities obtained from COMSOL of a 0.6 mm bubble rising in pure water for different mesh resolutions (CBD-cells per bubble diameter).



**Figure S3.** Comparison of time-dependent velocities obtained from COMSOL of a 0.8 mm bubble rising in pure water for different mesh resolutions (CBD-cells per bubble diameter).



**Figure S4.** Comparison of time-dependent velocities obtained from Fluent of a 1.5 mm bubble rising in pure propanol for different mesh resolutions (CBD-cells per bubble diameter).



**Figure S5.** Comparison of time-dependent velocities obtained from Fluent of a 1.5 mm bubble rising in pure water for different mesh resolutions (CBD-cells per bubble diameter).