

Assessing microplastic prevalence and dispersion from Saigon urban canals via Can Gio Mangrove Reserve to East Sea by Raman scattering microscopy

Vo Thi Kim Khuyen^{1*}, Dinh Vu Le², Le Hung Anh^{3*}, Axel René Fischer¹, Christina Dornack^{*1}

SUPPLEMENTARY MATERIALS

Table S1. Sampling information and abundance of microplastics (MPs/L) at sampling sites

Locations	Mark on the map	Coordinates	Sampling from	Sampling Volume (L)	Abundance (items/L)
Saigon River (SGR) and its main urban canals (freshwater) in Ho-Chi-Minh City					
Nhieu Loc – Thi Nghe Canal				45	35.58 ± 4.75
Bridge No. 1 (Upstream of NL-TN canal)	SG1	10.7933, 106.6593	Boat, river bank	5	45.89 ± 24.04
Tran Quang Dieu Bridge	SG2	10.7843, 106.6782	Boat	5	36 ± 11.52
Nhieu Loc	SG3	10.7880, 106.6835	River bank	5	27.5 ± 8.54
Hoang Hoa Tham Bridge	SG4	10.7949, 106.6933	Boat	5	26.67 ± 12.02
Bui Huu Nghia Bridge	SG5	10.7938, 106.6980	Boat	5	58.25 ± 5.45
Thi Nghe	SG6	10.7921, 106.7057	Boat, river bank	5	33.85 ± 8.51
Bach Ðang Wharf (estuary of SGR)	SG7	10.7760, 106.7070	Pier	10	21.08 ± 4.69
SG Tau Hu Canal				25	45.19 ± 10.30
Lo Gom Canal	SG8	10.7407, 106.6454	River bank	5	53.75 ± 24.01
Cha Va Bridge	SG9	10.7486, 106.6602	River bank	5	44.83 ± 12.86
Letter Y Bridge	SG10	10.7514, 106.6836	Bridge	5	45.71 ± 14.57
Nguyen Van Cu Bridge	SG11	10.7529, 106.6868	Bridge	10	36.45 ± 7.44
Kenh Te Canal (includes Nguyen Van Cu Bridge)				20	43.41 ± 7.93
Kenh Te Bridge	SG12	10.7529, 106.7015	Bridge	10	58.5 ± 23.0
Tan Thuan II Bridge (estuary of SGR)	SG13	10.7552, 106.7196	River bank	10	27.3 ± 5.7
Ben Nghe Canal (includes Nguyen Van Cu Bridge)				20	33.83 ± 10.54
Mong Bridge	SG14	10.7681, 106.7037	Bridge	10	33.38 ± 1.74
Khanh Hoi Bridge (estuary of SGR)	SG15	10.7691, 106.7058	River bank	10	27 ± 3.05
UNESCO Can Gio Mangrove Biosphere Reserve (brackish seawater)					
Can Gio Mangrove – Transition Zone				90	10.45 ± 3.67
Binh Khanh	CT1	10.6744, 106.7678 10.6697, 106.7806	Ferry	10	16.14 ± 7.38
Rach La Bridge	CT2	10.6017, 106.8192	Bridge	10	6.67 ± 1.89
An Nghia Bridge (Long Tau River)	CT3	10.5845, 106.8255 10.5818, 106.8330	Bridge Boat	10	8.64 ± 1.32
Intersection of Ðong Tranh and Long Tau rivers (border of Ðong Nai and HCMC)	CT4	10.6278, 106.8380	Boat	10	14.12 ± 1.96

Ly Nhon Vam Sat Bridge (Soai Rap River)	CT5	10.4948, 106.7560 10.5368, 106.7665	Bridge Land	10	13.54 ± 3.14
Can Thanh Wharf	CT6	10.4133, 106.9676 10.4201, 106.9595	Pier	10	6.62 ± 2.31
Cape of Dong Tranh	CT7	10.3777, 106.8782	Pier	15	7.67 ± 1.61
30 April Beach	CT8	10.3858, 106.9240	At the beach	15	10.46 ± 0.95
Can Gio Mangrove – Buffer Zone				45	10.75 ± 3.01
Rach Don Bridge (Long Tau River)	CB1	10.5668, 106.8266 10.5664, 106.8360	Bridge Boat	10	15.77 ± 3.93
Loi Giang Bridge (Long Tau River)	CB2	10.5441, 106.8318 10.5433, 106.8460	Bridge Boat	10	8.62 ± 3.30
Long Giang Xay 2 Bridge	CB3	10.5082, 106.8647	Bridge	10	10.36 ± 7.61
Dan Xay Bridge	CB4	10.5077, 106.8638	Bridge	10	8.95 ± 4.68
Dúra River (Tac Roi Canal)	CB5	10.5755, 106.8857	Boat	5	10.80 ± 1.54
Can Gio Mangrove – Core Zone				35	7.84 ± 1.28
Can Gio Protection Forest Management Board (Can Gio C1, C2)	CC1	10.5060, 106.8686 10.5222, 106.8715	Land Boat	10	6.93 ± 1.08
	CC2	10.5421, 106.8323		10	10.09 ± 2.84
Long Tau River (Can Gio C3)	CC3	10.5315, 106.9175	Boat	15	7.43 ± 2.52
End of Can Gio, go to the East Sea (seawater)					
Downstream of Long Tau River	ES1	10.4687, 106.9447	Boat	20	7.39 ± 5.75
Downstream of Soai Rap River	ES2	10.2770, 106.8420	Big canoe	20	3.49 ± 1.18
Ganh Rai Gulf	ES3	10.2492, 107.0059 10.2170, 107.0200		45	3.01 ± 1.65
White Tiger oil field	ES4	10.2630, 108.2253	In the sea with the help of fishing boats	25	4.72 ± 1.25

*Table S2. Turkey's multiple comparison tests for Saigon urban canals***Multiple Comparisons**

Dependent Variable: MPs

Tukey HSD

(I) Positon	(J) Positon	Mean Difference (I-J)	Std. Error	Sig.
Bridge No 1	Tran Quang Dieu Bridge	9.83333	21.00805	1.000
	Nhieu Loc	18.33333	21.00805	1.000
	Hoang Hoa Tham Bridge	19.16667	23.01317	1.000
	Bui Huu Nghia Bridge	-12.41667	21.00805	1.000
	Thi Nghe	12.08333	21.00805	1.000
	Bach ?ang Wharf	24.75000	16.27277	.969
	Lo Gom Canal	-7.91667	21.00805	1.000
	Cha Va Bridge	1.00000	18.79017	1.000
	Letter Y Bridge	-5.83333	18.79017	1.000
	Nguyen Van Cu Bridge	9.37879	16.51749	1.000
	Kenh Te Bridge	-12.66667	17.57660	1.000
	Tan Thuan II Bridge	18.53333	16.80644	.999
	Mong Bridge	12.45833	17.57660	1.000
	Khanh Hoi Bridge	18.83333	23.01317	1.000
	Bridge No 1	-9.83333	21.00805	1.000
Tran Quang Dieu Bridge	Nhieu Loc	8.50000	23.01317	1.000
	Hoang Hoa Tham Bridge	9.33333	24.85706	1.000
	Bui Huu Nghia Bridge	-22.25000	23.01317	1.000
	Thi Nghe	2.25000	23.01317	1.000
	Bach ?ang Wharf	14.91667	18.79017	1.000

Nhieu Loc	Lo Gom Canal	-17.75000	23.01317	1.000
	Cha Va Bridge	-8.83333	21.00805	1.000
	Letter Y Bridge	-15.66667	21.00805	1.000
	Nguyen Van Cu Bridge	-.45455	19.00250	1.000
	Kenh Te Bridge	-22.50000	19.92999	.998
	Tan Thuan II Bridge	8.70000	19.25420	1.000
	Mong Bridge	2.62500	19.92999	1.000
	Khanh Hoi Bridge	9.00000	24.85706	1.000
	Bridge No 1	-18.33333	21.00805	1.000
	Tran Quang Dieu Bridge	-8.50000	23.01317	1.000

Multiple Comparisons

Dependent Variable: MPs

Tukey HSD

(I) Positon	(J) Positon	95% Confidence Interval	
		Lower Bound	Upper Bound
Bridge No 1	Tran Quang Dieu Bridge	-63.7476	83.4143
	Nhieu Loc	-55.2476	91.9143
	Hoang Hoa Tham Bridge	-61.4373	99.7706
	Bui Huu Nghia Bridge	-85.9976	61.1643
	Thi Nghe	-61.4976	85.6643
	Bach ?ang Wharf	-32.2456	81.7456
	Lo Gom Canal	-81.4976	65.6643
	Cha Va Bridge	-64.8128	66.8128
	Letter Y Bridge	-71.6462	59.9795
	Nguyen Van Cu Bridge	-48.4739	67.2315

Tran Quang Dieu Bridge	Kenh Te Bridge	-74.2289	48.8956
	Tan Thuan II Bridge	-40.3315	77.3981
	Mong Bridge	-49.1039	74.0206
	Khanh Hoi Bridge	-61.7706	99.4373
	Bridge No 1	-83.4143	63.7476
	Nhieu Loc	-72.1039	89.1039
	Hoang Hoa Tham Bridge	-77.7289	96.3955
	Bui Huu Nghia Bridge	-102.8539	58.3539
	Thi Nghe	-78.3539	82.8539
	Bach ?ang Wharf	-50.8962	80.7295
	Lo Gom Canal	-98.3539	62.8539
	Cha Va Bridge	-82.4143	64.7476
	Letter Y Bridge	-89.2476	57.9143
	Nguyen Van Cu Bridge	-67.0110	66.1020
	Kenh Te Bridge	-92.3050	47.3050
Nhieu Loc	Tan Thuan II Bridge	-58.7381	76.1381
	Mong Bridge	-67.1800	72.4300
	Khanh Hoi Bridge	-78.0622	96.0622
	Bridge No 1	-91.9143	55.2476
	Tran Quang Dieu Bridge	-89.1039	72.1039

Multiple Comparisons

Dependent Variable: MPs

Tukey HSD

(I) Positon	(J) Positon	Mean Difference (I-J)	Std. Error	Sig.

Nhieu Loc	Hoang Hoa Tham Bridge	.83333	24.85706	1.000
	Bui Huu Nghia Bridge	-30.75000	23.01317	.990
	Thi Nghe	-6.25000	23.01317	1.000
	Bach ?ang Wharf	6.41667	18.79017	1.000
	Lo Gom Canal	-26.25000	23.01317	.998
	Cha Va Bridge	-17.33333	21.00805	1.000
	Letter Y Bridge	-24.16667	21.00805	.998
	Nguyen Van Cu Bridge	-8.95455	19.00250	1.000
	Kenh Te Bridge	-31.00000	19.92999	.963
	Tan Thuan II Bridge	.20000	19.25420	1.000
	Mong Bridge	-5.87500	19.92999	1.000
	Khanh Hoi Bridge	.50000	24.85706	1.000
	Bridge No 1	-19.16667	23.01317	1.000
	Tran Quang Dieu Bridge	-9.33333	24.85706	1.000
	Nhieu Loc	-.83333	24.85706	1.000
	Bui Huu Nghia Bridge	-31.58333	24.85706	.994
	Thi Nghe	-7.08333	24.85706	1.000
	Bach ?ang Wharf	5.58333	21.00805	1.000
	Lo Gom Canal	-27.08333	24.85706	.999
Hoang Hoa Tham Bridge	Cha Va Bridge	-18.16667	23.01317	1.000
	Letter Y Bridge	-25.00000	23.01317	.999
	Nguyen Van Cu Bridge	-9.78788	21.19818	1.000
	Kenh Te Bridge	-31.83333	22.03343	.980
	Tan Thuan II Bridge	-.63333	21.42410	1.000
	Mong Bridge	-6.70833	22.03343	1.000
	Khanh Hoi Bridge	-.33333	26.57332	1.000

Bui Huu Nghia Bridge	Bridge No 1	12.41667	21.00805	1.000
	Tran Quang Dieu Bridge	22.25000	23.01317	1.000
	Nhieu Loc	30.75000	23.01317	.990
	Hoang Hoa Tham Bridge	31.58333	24.85706	.994

Multiple Comparisons

Dependent Variable: MPs

Tukey HSD

(I) Positon	(J) Positon	95% Confidence Interval	
		Lower Bound	Upper Bound
Nhieu Loc	Hoang Hoa Tham Bridge	-86.2289	87.8955
	Bui Huu Nghia Bridge	-111.3539	49.8539
	Thi Nghe	-86.8539	74.3539
	Bach ?ang Wharf	-59.3962	72.2295
	Lo Gom Canal	-106.8539	54.3539
	Cha Va Bridge	-90.9143	56.2476
	Letter Y Bridge	-97.7476	49.4143
	Nguyen Van Cu Bridge	-75.5110	57.6020
	Kenh Te Bridge	-100.8050	38.8050
	Tan Thuan II Bridge	-67.2381	67.6381
	Mong Bridge	-75.6800	63.9300
	Khanh Hoi Bridge	-86.5622	87.5622
	Bridge No 1	-99.7706	61.4373
Hoang Hoa Tham Bridge	Tran Quang Dieu Bridge	-96.3955	77.7289
	Nhieu Loc	-87.8955	86.2289

Bui Huu Nghia Bridge	Bui Huu Nghia Bridge	-118.6455	55.4789
	Thi Nghe	-94.1455	79.9789
	Bach ?ang Wharf	-67.9976	79.1643
	Lo Gom Canal	-114.1455	59.9789
	Cha Va Bridge	-98.7706	62.4373
	Letter Y Bridge	-105.6039	55.6039
	Nguyen Van Cu Bridge	-84.0348	64.4590
	Kenh Te Bridge	-109.0057	45.3391
	Tan Thuan II Bridge	-75.6715	74.4048
	Mong Bridge	-83.8807	70.4641
	Khanh Hoi Bridge	-93.4067	92.7401
	Bridge No 1	-61.1643	85.9976
	Tran Quang Dieu Bridge	-58.3539	102.8539
	Nhieu Loc	-49.8539	111.3539
	Hoang Hoa Tham Bridge	-55.4789	118.6455

Multiple Comparisons

Dependent Variable: MPs

Tukey HSD

(I) Positon	(J) Positon	Mean Difference (I-J)	Std. Error	Sig.
Bui Huu Nghia Bridge	Thi Nghe	24.50000	23.01317	.999
	Bach ?ang Wharf	37.16667	18.79017	.805
	Lo Gom Canal	4.50000	23.01317	1.000
	Cha Va Bridge	13.41667	21.00805	1.000
	Letter Y Bridge	6.58333	21.00805	1.000

Thi Nghe	Nguyen Van Cu Bridge	21.79545	19.00250	.998
	Kenh Te Bridge	-.25000	19.92999	1.000
	Tan Thuan II Bridge	30.95000	19.25420	.952
	Mong Bridge	24.87500	19.92999	.995
	Khanh Hoi Bridge	31.25000	24.85706	.995
	Bridge No 1	-12.08333	21.00805	1.000
	Tran Quang Dieu Bridge	-2.25000	23.01317	1.000
	Nhieu Loc	6.25000	23.01317	1.000
	Hoang Hoa Tham Bridge	7.08333	24.85706	1.000
	Bui Huu Nghia Bridge	-24.50000	23.01317	.999
	Bach ?ang Wharf	12.66667	18.79017	1.000
	Lo Gom Canal	-20.00000	23.01317	1.000
	Cha Va Bridge	-11.08333	21.00805	1.000
	Letter Y Bridge	-17.91667	21.00805	1.000
	Nguyen Van Cu Bridge	-2.70455	19.00250	1.000
Bach ?ang Wharf	Kenh Te Bridge	-24.75000	19.92999	.995
	Tan Thuan II Bridge	6.45000	19.25420	1.000
	Mong Bridge	.37500	19.92999	1.000
	Khanh Hoi Bridge	6.75000	24.85706	1.000
	Bridge No 1	-24.75000	16.27277	.969
	Tran Quang Dieu Bridge	-14.91667	18.79017	1.000
	Nhieu Loc	-6.41667	18.79017	1.000
	Hoang Hoa Tham Bridge	-5.58333	21.00805	1.000
	Bui Huu Nghia Bridge	-37.16667	18.79017	.805
	Thi Nghe	-12.66667	18.79017	1.000

Multiple Comparisons

Dependent Variable: MPs

Tukey HSD

(I) Positon	(J) Positon	95% Confidence Interval	
		Lower Bound	Upper Bound
Bui Huu Nghia Bridge	Thi Nghe	-56.1039	105.1039
	Bach ?ang Wharf	-28.6462	102.9795
	Lo Gom Canal	-76.1039	85.1039
	Cha Va Bridge	-60.1643	86.9976
	Letter Y Bridge	-66.9976	80.1643
	Nguyen Van Cu Bridge	-44.7610	88.3520
	Kenh Te Bridge	-70.0550	69.5550
	Tan Thuan II Bridge	-36.4881	98.3881
	Mong Bridge	-44.9300	94.6800
	Khanh Hoi Bridge	-55.8122	118.3122
	Bridge No 1	-85.6643	61.4976
	Tran Quang Dieu Bridge	-82.8539	78.3539
	Nhieu Loc	-74.3539	86.8539
	Hoang Hoa Tham Bridge	-79.9789	94.1455
	Bui Huu Nghia Bridge	-105.1039	56.1039
Thi Nghe	Bach ?ang Wharf	-53.1462	78.4795
	Lo Gom Canal	-100.6039	60.6039
	Cha Va Bridge	-84.6643	62.4976
	Letter Y Bridge	-91.4976	55.6643
	Nguyen Van Cu Bridge	-69.2610	63.8520
	Kenh Te Bridge	-94.5550	45.0550

Bach ?ang Wharf	Tan Thuan II Bridge	-60.9881	73.8881
	Mong Bridge	-69.4300	70.1800
	Khanh Hoi Bridge	-80.3122	93.8122
	Bridge No 1	-81.7456	32.2456
	Tran Quang Dieu Bridge	-80.7295	50.8962
	Nhieu Loc	-72.2295	59.3962
	Hoang Hoa Tham Bridge	-79.1643	67.9976
	Bui Huu Nghia Bridge	-102.9795	28.6462
	Thi Nghe	-78.4795	53.1462

Multiple Comparisons

Dependent Variable: MPs

Tukey HSD

(I) Positon	(J) Positon	Mean Difference (I-J)	Std. Error	Sig.
Bach ?ang Wharf	Lo Gom Canal	-32.66667	18.79017	.914
	Cha Va Bridge	-23.75000	16.27277	.978
	Letter Y Bridge	-30.58333	16.27277	.856
	Nguyen Van Cu Bridge	-15.37121	13.58527	.998
	Kenh Te Bridge	-37.41667	14.85494	.440
	Tan Thuan II Bridge	-6.21667	13.93517	1.000
	Mong Bridge	-12.29167	14.85494	1.000
	Khanh Hoi Bridge	-5.91667	21.00805	1.000
	Bridge No 1	7.91667	21.00805	1.000
Lo Gom Canal	Tran Quang Dieu Bridge	17.75000	23.01317	1.000
	Nhieu Loc	26.25000	23.01317	.998

Cha Va Bridge	Hoang Hoa Tham Bridge	27.08333	24.85706	.999
	Bui Huu Nghia Bridge	-4.50000	23.01317	1.000
	Thi Nghe	20.00000	23.01317	1.000
	Bach ?ang Wharf	32.66667	18.79017	.914
	Cha Va Bridge	8.91667	21.00805	1.000
	Letter Y Bridge	2.08333	21.00805	1.000
	Nguyen Van Cu Bridge	17.29545	19.00250	1.000
	Kenh Te Bridge	-4.75000	19.92999	1.000
	Tan Thuan II Bridge	26.45000	19.25420	.987
	Mong Bridge	20.37500	19.92999	.999
	Khanh Hoi Bridge	26.75000	24.85706	.999
	Bridge No 1	-1.00000	18.79017	1.000
	Tran Quang Dieu Bridge	8.83333	21.00805	1.000
	Nhieu Loc	17.33333	21.00805	1.000
	Hoang Hoa Tham Bridge	18.16667	23.01317	1.000
	Bui Huu Nghia Bridge	-13.41667	21.00805	1.000
	Thi Nghe	11.08333	21.00805	1.000
	Bach ?ang Wharf	23.75000	16.27277	.978
	Lo Gom Canal	-8.91667	21.00805	1.000

Multiple Comparisons

Dependent Variable: MPs

Tukey HSD

(I) Positon	(J) Positon	95% Confidence Interval	
		Lower Bound	Upper Bound
Bach ?ang Wharf	Lo Gom Canal	-98.4795	33.1462

Lo Gom Canal	Cha Va Bridge	-80.7456	33.2456
	Letter Y Bridge	-87.5789	26.4123
	Nguyen Van Cu Bridge	-62.9538	32.2114
	Kenh Te Bridge	-89.4463	14.6129
	Tan Thuan II Bridge	-55.0248	42.5914
	Mong Bridge	-64.3213	39.7379
	Khanh Hoi Bridge	-79.4976	67.6643
	Bridge No 1	-65.6643	81.4976
	Tran Quang Dieu Bridge	-62.8539	98.3539
	Nhieu Loc	-54.3539	106.8539
	Hoang Hoa Tham Bridge	-59.9789	114.1455
	Bui Huu Nghia Bridge	-85.1039	76.1039
	Thi Nghe	-60.6039	100.6039
	Bach ?ang Wharf	-33.1462	98.4795
	Cha Va Bridge	-64.6643	82.4976
Cha Va Bridge	Letter Y Bridge	-71.4976	75.6643
	Nguyen Van Cu Bridge	-49.2610	83.8520
	Kenh Te Bridge	-74.5550	65.0550
	Tan Thuan II Bridge	-40.9881	93.8881
	Mong Bridge	-49.4300	90.1800
	Khanh Hoi Bridge	-60.3122	113.8122
	Bridge No 1	-66.8128	64.8128
	Tran Quang Dieu Bridge	-64.7476	82.4143
	Nhieu Loc	-56.2476	90.9143
	Hoang Hoa Tham Bridge	-62.4373	98.7706
	Bui Huu Nghia Bridge	-86.9976	60.1643

Thi Nghe	-62.4976	84.6643
Bach ?ang Wharf	-33.2456	80.7456
Lo Gom Canal	-82.4976	64.6643

Multiple Comparisons

Dependent Variable: MPs

Tukey HSD

(I) Positon	(J) Positon	Mean Difference (I-J)	Std. Error	Sig.
Cha Va Bridge	Letter Y Bridge	-6.83333	18.79017	1.000
	Nguyen Van Cu Bridge	8.37879	16.51749	1.000
	Kenh Te Bridge	-13.66667	17.57660	1.000
	Tan Thuan II Bridge	17.53333	16.80644	.999
	Mong Bridge	11.45833	17.57660	1.000
	Khanh Hoi Bridge	17.83333	23.01317	1.000
	Bridge No 1	5.83333	18.79017	1.000
	Tran Quang Dieu Bridge	15.66667	21.00805	1.000
	Nhieu Loc	24.16667	21.00805	.998
	Hoang Hoa Tham Bridge	25.00000	23.01317	.999
	Bui Huu Nghia Bridge	-6.58333	21.00805	1.000
	Thi Nghe	17.91667	21.00805	1.000
Letter Y Bridge	Bach ?ang Wharf	30.58333	16.27277	.856
	Lo Gom Canal	-2.08333	21.00805	1.000
	Cha Va Bridge	6.83333	18.79017	1.000
	Nguyen Van Cu Bridge	15.21212	16.51749	1.000
	Kenh Te Bridge	-6.83333	17.57660	1.000

Nguyen Van Cu Bridge	Tan Thuan II Bridge	24.36667	16.80644	.980
	Mong Bridge	18.29167	17.57660	.999
	Khanh Hoi Bridge	24.66667	23.01317	.999
	Bridge No 1	-9.37879	16.51749	1.000
	Tran Quang Dieu Bridge	.45455	19.00250	1.000
	Nhieu Loc	8.95455	19.00250	1.000
	Hoang Hoa Tham Bridge	9.78788	21.19818	1.000
	Bui Huu Nghia Bridge	-21.79545	19.00250	.998
	Thi Nghe	2.70455	19.00250	1.000
	Bach ?ang Wharf	15.37121	13.58527	.998
	Lo Gom Canal	-17.29545	19.00250	1.000
	Cha Va Bridge	-8.37879	16.51749	1.000
	Letter Y Bridge	-15.21212	16.51749	1.000

Multiple Comparisons

Dependent Variable: MPs

Tukey HSD

(I) Positon	(J) Positon	95% Confidence Interval	
		Lower Bound	Upper Bound
Cha Va Bridge	Letter Y Bridge	-72.6462	58.9795
	Nguyen Van Cu Bridge	-49.4739	66.2315
	Kenh Te Bridge	-75.2289	47.8956
	Tan Thuan II Bridge	-41.3315	76.3981
	Mong Bridge	-50.1039	73.0206
	Khanh Hoi Bridge	-62.7706	98.4373
Letter Y Bridge	Bridge No 1	-59.9795	71.6462

Nguyen Van Cu Bridge	Tran Quang Dieu Bridge	-57.9143	89.2476
	Nhieu Loc	-49.4143	97.7476
	Hoang Hoa Tham Bridge	-55.6039	105.6039
	Bui Huu Nghia Bridge	-80.1643	66.9976
	Thi Nghe	-55.6643	91.4976
	Bach ?ang Wharf	-26.4123	87.5789
	Lo Gom Canal	-75.6643	71.4976
	Cha Va Bridge	-58.9795	72.6462
	Nguyen Van Cu Bridge	-42.6406	73.0648
	Kenh Te Bridge	-68.3956	54.7289
	Tan Thuan II Bridge	-34.4981	83.2315
	Mong Bridge	-43.2706	79.8539
	Khanh Hoi Bridge	-55.9373	105.2706
	Bridge No 1	-67.2315	48.4739
	Tran Quang Dieu Bridge	-66.1020	67.0110
	Nhieu Loc	-57.6020	75.5110
	Hoang Hoa Tham Bridge	-64.4590	84.0348
	Bui Huu Nghia Bridge	-88.3520	44.7610
	Thi Nghe	-63.8520	69.2610
	Bach ?ang Wharf	-32.2114	62.9538
	Lo Gom Canal	-83.8520	49.2610
	Cha Va Bridge	-66.2315	49.4739
	Letter Y Bridge	-73.0648	42.6406

Multiple Comparisons

Dependent Variable: MPs

Tukey HSD

(I) Positon	(J) Positon	Mean Difference (I-J)	Std. Error	Sig.
Nguyen Van Cu Bridge	Kenh Te Bridge	-22.04545	15.12262	.979
	Tan Thuan II Bridge	9.15455	14.22017	1.000
	Mong Bridge	3.07955	15.12262	1.000
	Khanh Hoi Bridge	9.45455	21.19818	1.000
	Bridge No 1	12.66667	17.57660	1.000
	Tran Quang Dieu Bridge	22.50000	19.92999	.998
	Nhieu Loc	31.00000	19.92999	.963
	Hoang Hoa Tham Bridge	31.83333	22.03343	.980
	Bui Huu Nghia Bridge	.25000	19.92999	1.000
	Thi Nghe	24.75000	19.92999	.995
	Bach ?ang Wharf	37.41667	14.85494	.440
Kenh Te Bridge	Lo Gom Canal	4.75000	19.92999	1.000
	Cha Va Bridge	13.66667	17.57660	1.000
	Letter Y Bridge	6.83333	17.57660	1.000
	Nguyen Van Cu Bridge	22.04545	15.12262	.979
	Tan Thuan II Bridge	31.20000	15.43770	.780
Tan Thuan II Bridge	Mong Bridge	25.12500	16.27277	.965
	Khanh Hoi Bridge	31.50000	22.03343	.982
	Bridge No 1	-18.53333	16.80644	.999
	Tran Quang Dieu Bridge	-8.70000	19.25420	1.000
	Nhieu Loc	-.20000	19.25420	1.000
	Hoang Hoa Tham Bridge	.63333	21.42410	1.000
	Bui Huu Nghia Bridge	-30.95000	19.25420	.952
	Thi Nghe	-6.45000	19.25420	1.000

Bach ?ang Wharf	6.21667	13.93517	1.000
Lo Gom Canal	-26.45000	19.25420	.987
Cha Va Bridge	-17.53333	16.80644	.999
Letter Y Bridge	-24.36667	16.80644	.980
Nguyen Van Cu Bridge	-9.15455	14.22017	1.000
Kenh Te Bridge	-31.20000	15.43770	.780

Multiple Comparisons

Dependent Variable: MPs

Tukey HSD

(I) Positon	(J) Positon	95% Confidence Interval	
		Lower Bound	Upper Bound
Nguyen Van Cu Bridge	Kenh Te Bridge	-75.0126	30.9217
	Tan Thuan II Bridge	-40.6518	58.9609
	Mong Bridge	-49.8876	56.0467
	Khanh Hoi Bridge	-64.7923	83.7014
	Bridge No 1	-48.8956	74.2289
	Tran Quang Dieu Bridge	-47.3050	92.3050
	Nhieu Loc	-38.8050	100.8050
	Hoang Hoa Tham Bridge	-45.3391	109.0057
	Bui Huu Nghia Bridge	-69.5550	70.0550
	Thi Nghe	-45.0550	94.5550
Kenh Te Bridge	Bach ?ang Wharf	-14.6129	89.4463
	Lo Gom Canal	-65.0550	74.5550
	Cha Va Bridge	-47.8956	75.2289
	Letter Y Bridge	-54.7289	68.3956

Tan Thuan II Bridge	Nguyen Van Cu Bridge	-30.9217	75.0126
	Tan Thuan II Bridge	-22.8708	85.2708
	Mong Bridge	-31.8706	82.1206
	Khanh Hoi Bridge	-45.6724	108.6724
	Bridge No 1	-77.3981	40.3315
	Tran Quang Dieu Bridge	-76.1381	58.7381
	Nhieu Loc	-67.6381	67.2381
	Hoang Hoa Tham Bridge	-74.4048	75.6715
	Bui Huu Nghia Bridge	-98.3881	36.4881
	Thi Nghe	-73.8881	60.9881
	Bach ?ang Wharf	-42.5914	55.0248
	Lo Gom Canal	-93.8881	40.9881
	Cha Va Bridge	-76.3981	41.3315
	Letter Y Bridge	-83.2315	34.4981
	Nguyen Van Cu Bridge	-58.9609	40.6518
	Kenh Te Bridge	-85.2708	22.8708

Multiple Comparisons

Dependent Variable: MPs

Tukey HSD

(I) Positon	(J) Positon	Mean Difference (I-J)	Std. Error	Sig.
Tan Thuan II Bridge	Mong Bridge	-6.07500	15.43770	1.000
	Khanh Hoi Bridge	.30000	21.42410	1.000
	Bridge No 1	-12.45833	17.57660	1.000
	Tran Quang Dieu Bridge	-2.62500	19.92999	1.000
Mong Bridge				

Khanh Hoi Bridge	Nhieu Loc	5.87500	19.92999	1.000
	Hoang Hoa Tham Bridge	6.70833	22.03343	1.000
	Bui Huu Nghia Bridge	-24.87500	19.92999	.995
	Thi Nghe	-.37500	19.92999	1.000
	Bach ?ang Wharf	12.29167	14.85494	1.000
	Lo Gom Canal	-20.37500	19.92999	.999
	Cha Va Bridge	-11.45833	17.57660	1.000
	Letter Y Bridge	-18.29167	17.57660	.999
	Nguyen Van Cu Bridge	-3.07955	15.12262	1.000
	Kenh Te Bridge	-25.12500	16.27277	.965
	Tan Thuan II Bridge	6.07500	15.43770	1.000
	Khanh Hoi Bridge	6.37500	22.03343	1.000
	Bridge No 1	-18.83333	23.01317	1.000
	Tran Quang Dieu Bridge	-9.00000	24.85706	1.000
	Nhieu Loc	-.50000	24.85706	1.000
	Hoang Hoa Tham Bridge	.33333	26.57332	1.000
	Bui Huu Nghia Bridge	-31.25000	24.85706	.995
	Thi Nghe	-6.75000	24.85706	1.000
	Bach ?ang Wharf	5.91667	21.00805	1.000
	Lo Gom Canal	-26.75000	24.85706	.999
	Cha Va Bridge	-17.83333	23.01317	1.000
	Letter Y Bridge	-24.66667	23.01317	.999
	Nguyen Van Cu Bridge	-9.45455	21.19818	1.000
	Kenh Te Bridge	-31.50000	22.03343	.982
	Tan Thuan II Bridge	-.30000	21.42410	1.000
	Mong Bridge	-6.37500	22.03343	1.000

Multiple Comparisons

Dependent Variable: MPs

Tukey HSD

(I) Positon	(J) Positon	95% Confidence Interval	
		Lower Bound	Upper Bound
Tan Thuan II Bridge	Mong Bridge	-60.1458	47.9958
	Khanh Hoi Bridge	-74.7382	75.3382
	Bridge No 1	-74.0206	49.1039
	Tran Quang Dieu Bridge	-72.4300	67.1800
	Nhieu Loc	-63.9300	75.6800
	Hoang Hoa Tham Bridge	-70.4641	83.8807
	Bui Huu Nghia Bridge	-94.6800	44.9300
	Thi Nghe	-70.1800	69.4300
	Bach ?ang Wharf	-39.7379	64.3213
Mong Bridge	Lo Gom Canal	-90.1800	49.4300
	Cha Va Bridge	-73.0206	50.1039
	Letter Y Bridge	-79.8539	43.2706
	Nguyen Van Cu Bridge	-56.0467	49.8876
	Kenh Te Bridge	-82.1206	31.8706
	Tan Thuan II Bridge	-47.9958	60.1458
	Khanh Hoi Bridge	-70.7974	83.5474
	Bridge No 1	-99.4373	61.7706
	Tran Quang Dieu Bridge	-96.0622	78.0622
Khanh Hoi Bridge	Nhieu Loc	-87.5622	86.5622
	Hoang Hoa Tham Bridge	-92.7401	93.4067
	Bui Huu Nghia Bridge	-118.3122	55.8122

Thi Nghe	-93.8122	80.3122
Bach ?ang Wharf	-67.6643	79.4976
Lo Gom Canal	-113.8122	60.3122
Cha Va Bridge	-98.4373	62.7706
Letter Y Bridge	-105.2706	55.9373
Nguyen Van Cu Bridge	-83.7014	64.7923
Kenh Te Bridge	-108.6724	45.6724
Tan Thuan II Bridge	-75.3382	74.7382
Mong Bridge	-83.5474	70.7974

*Table S3. Turkey's multiple comparison tests for Can Gio and East Sea***Multiple Comparisons**

Dependent Variable: MPs

Tukey HSD

(I) Positon	(J) Positon	Mean Difference (I-J)	Std. Error	Sig.
Binh Khanh	Rach La Bridge	9.23333	4.17645	.789
	An Nghia Bridge	7.26364	3.53375	.874
	Intersection of Dong Tranh	1.77500	3.83631	1.000
	Ly Nhon	2.36154	3.40185	1.000
	Can Thanh Wharf	9.27500	3.83631	.647
	Dong Tranh Cape	8.23333	4.17645	.909
	30 April Beach	5.43846	3.40185	.988
	Rach ?on Bridge	.13077	3.40185	1.000
	Loi Giang Bridge	7.43846	3.40185	.804
	Long Giang Xay 2 Bridge	5.15000	4.78472	1.000
	Dan Xay Bridge	7.34444	3.71602	.907
	Dua River	5.65000	4.78472	1.000
	Can Gio C1	9.34444	3.71602	.575
	Can Gio C2	5.77500	3.83631	.994
	Can Gio C3	8.27500	3.83631	.821
	Downstream of Long Tau River	8.56667	4.17645	.876
	Downstream of Soai Rap River	12.12222	3.71602	.131
	Ganh Rai Gulf	12.82308*	3.40185	.030

Rach La Bridge	White Tiger Oilfield	11.18571	3.98564	.362
	Binh Khanh	-9.23333	4.17645	.789
	An Nghia Bridge	-1.96970	4.10464	1.000
	Intersection of Dong Tranh	-7.45833	4.36783	.976
	Ly Nhon	-6.87179	3.99165	.974
	Can Thanh Wharf	.04167	4.36783	1.000
	Dong Tranh Cape	-1.00000	4.66941	1.000
	30 April Beach	-3.79487	3.99165	1.000
	Rach ?on Bridge	-9.10256	3.99165	.745

Multiple Comparisons

Dependent Variable: MPs

Tukey HSD

(I) Positon	(J) Positon	Mean Difference (I-J)	Std. Error	Sig.
Downstream of Soai Rap River	Binh Khanh	-12.12222	3.71602	.131
	Rach La Bridge	-2.88889	4.26257	1.000
	An Nghia Bridge	-4.85859	3.63513	.999
	Intersection of Dong Tranh	-10.34722	3.92989	.485
	Ly Nhon	-9.76068	3.50704	.378
	Can Thanh Wharf	-2.84722	3.92989	1.000
	Dong Tranh Cape	-3.88889	4.26257	1.000
	30 April Beach	-6.68376	3.50704	.932
	Rach ?on Bridge	-11.99145	3.50704	.086
	Loi Giang Bridge	-4.68376	3.50704	.999
	Long Giang Xay 2 Bridge	-6.97222	4.86007	.997
	Dan Xay Bridge	-4.77778	3.81256	.999
	Dua River	-6.47222	4.86007	.999
	Can Gio C1	-2.77778	3.81256	1.000
	Can Gio C2	-6.34722	3.92989	.987
	Can Gio C3	-3.84722	3.92989	1.000
	Downstream of Long Tau River	-3.55556	4.26257	1.000
	Ganh Rai Gulf	.70085 [*]	3.50704	1.000
	White Tiger Oilfield	-.93651	4.07579	1.000

Ganh Rai Gulf	Binh Khanh	-12.82308	3.40185	.030
	Rach La Bridge	-3.58974	3.99165	1.000
	An Nghia Bridge	-5.55944	3.31329	.980
	Intersection of Dong Tranh	-11.04808	3.63426	.224
	Ly Nhon	-10.46154	3.17224	.120
	Can Thanh Wharf	-3.54808	3.63426	1.000
	Dong Tranh Cape	-4.58974	3.99165	1.000
	30 April Beach	-7.38462	3.17224	.712
	Rach Don Bridge	-12.69231	3.17224	.014

Multiple Comparisons

Dependent Variable: MPs

Tukey HSD

(I) Positon	(J) Positon	Mean Difference (I-J)	Std. Error	Sig.
Rach Don Bridge	Dan Xay Bridge	7.21368	3.50704	.873
	Dua River	5.51923	4.62429	1.000
	Can Gio C1	9.21368	3.50704	.490
	Can Gio C2	5.64423	3.63426	.991
	Can Gio C3	8.14423	3.63426	.770
	Downstream of Long Tau River	8.43590	3.99165	.845
	Downstream of Soai Rap River	11.99145	3.50704	.086
	Ganh Rai Gulf	12.69231	3.17224	.014
	White Tiger Oilfield	11.05495	3.79155	.293

Loi Giang Bridge	Binh Khanh	-7.43846	3.40185	.804
	Rach La Bridge	1.79487	3.99165	1.000
	An Nghia Bridge	-.17483	3.31329	1.000
	Intersection of Dong Tranh	-5.66346	3.63426	.991
	Ly Nhon	-5.07692	3.17224	.988
	Can Thanh Wharf	1.83654	3.63426	1.000
	Dong Tranh Cape	.79487	3.99165	1.000
	30 April Beach	-2.00000	3.17224	1.000
	Rach ?on Bridge	-7.30769	3.17224	.729
	Long Giang Xay 2 Bridge	-2.28846	4.62429	1.000
	Dan Xay Bridge	-.09402	3.50704	1.000
	Dua River	-1.78846	4.62429	1.000
	Can Gio C1	1.90598	3.50704	1.000
	Can Gio C2	-1.66346	3.63426	1.000
	Can Gio C3	.83654	3.63426	1.000
	Downstream of Long Tau River	1.12821	3.99165	1.000
	Downstream of Soai Rap River	4.68376	3.50704	.999

Multiple Comparisons

Dependent Variable: MPs

Tukey HSD

(I) Positon	(J) Positon	Mean Difference (I-J)	Std. Error	Sig.
Loi Giang Bridge	Ganh Rai Gulf	5.38462	3.17224	.977
	White Tiger Oilfield	3.74725	3.79155	1.000

Long Giang Xay 2 Bridge	Binh Khanh	-5.15000	4.78472	1.000
	Rach La Bridge	4.08333	5.22056	1.000
	An Nghia Bridge	2.11364	4.72217	1.000
	Intersection of Dong Tranh	-3.37500	4.95265	1.000
	Ly Nhon	-2.78846	4.62429	1.000
	Can Thanh Wharf	4.12500	4.95265	1.000
	Dong Tranh Cape	3.08333	5.22056	1.000
	30 April Beach	.28846	4.62429	1.000
	Rach ?on Bridge	-5.01923	4.62429	1.000
	Loi Giang Bridge	2.28846	4.62429	1.000
	Dan Xay Bridge	2.19444	4.86007	1.000
	Dua River	.50000	5.71883	1.000
	Can Gio C1	4.19444	4.86007	1.000
	Can Gio C2	.62500	4.95265	1.000
	Can Gio C3	3.12500	4.95265	1.000
	Downstream of Long Tau River	3.41667	5.22056	1.000
	Downstream of Soai Rap River	6.97222	4.86007	.997
	Ganh Rai Gulf	7.67308	4.62429	.982
	White Tiger Oilfield	6.03571	5.06920	1.000
	Binh Khanh	-7.34444	3.71602	.907
Dan Xay Bridge	Rach La Bridge	1.88889	4.26257	1.000
	An Nghia Bridge	-.08081	3.63513	1.000
	Intersection of Dong Tranh	-5.56944	3.92989	.997
	Ly Nhon	-4.98291	3.50704	.997
	Can Thanh Wharf	1.93056	3.92989	1.000

Multiple Comparisons

Dependent Variable: MPs

Tukey HSD

(I) Positon	(J) Positon	Mean Difference (I-J)	Std. Error	Sig.
Dan Xay Bridge	Dong Tranh Cape	.88889	4.26257	1.000
	30 April Beach	-1.90598	3.50704	1.000
	Rach ?on Bridge	-7.21368	3.50704	.873
	Loi Giang Bridge	.09402	3.50704	1.000
	Long Giang Xay 2 Bridge	-2.19444	4.86007	1.000
	Dua River	-1.69444	4.86007	1.000
	Can Gio C1	2.00000	3.81256	1.000
	Can Gio C2	-1.56944	3.92989	1.000
	Can Gio C3	.93056	3.92989	1.000
	Downstream of Long Tau River	1.22222	4.26257	1.000
	Downstream of Soai Rap River	4.77778	3.81256	.999
	Ganh Rai Gulf	5.47863	3.50704	.991
	White Tiger Oilfield	3.84127	4.07579	1.000
	Binh Khanh	-5.65000	4.78472	1.000
	Rach La Bridge	3.58333	5.22056	1.000
Dua River	An Nghia Bridge	1.61364	4.72217	1.000
	Intersection of Dong Tranh	-3.87500	4.95265	1.000
	Ly Nhon	-3.28846*	4.62429	1.000

Can Thanh Wharf	3.62500	4.95265	1.000
Dong Tranh Cape	2.58333	5.22056	1.000
30 April Beach	-.21154	4.62429	1.000
Rach ?on Bridge	-5.51923	4.62429	1.000
Loi Giang Bridge	1.78846	4.62429	1.000
Long Giang Xay 2 Bridge	-.50000	5.71883	1.000
Dan Xay Bridge	1.69444	4.86007	1.000
Can Gio C1	3.69444	4.86007	1.000
Can Gio C2	.12500	4.95265	1.000
Can Gio C3	2.62500	4.95265	1.000

Multiple Comparisons

Dependent Variable: MPs

Tukey HSD

(I) Positon	(J) Positon	Mean Difference (I-J)	Std. Error	Sig.
Dua River	Downstream of Long Tau River	2.91667	5.22056	1.000
	Downstream of Soai Rap River	6.47222	4.86007	.999
	Ganh Rai Gulf	7.17308	4.62429	.991
	White Tiger Oilfield	5.53571	5.06920	1.000
	Binh Khanh	-9.34444	3.71602	.575
Can Gio C1	Rach La Bridge	-.11111	4.26257	1.000
	An Nghia Bridge	-2.08081	3.63513	1.000
	Intersection of Dong Tranh	-7.56944	3.92989	.925

Can Gio C2	Ly Nhon	-6.98291	3.50704	.901
	Can Thanh Wharf	-.06944	3.92989	1.000
	Dong Tranh Cape	-1.11111	4.26257	1.000
	30 April Beach	-3.90598	3.50704	1.000
	Rach ?on Bridge	-9.21368	3.50704	.490
	Loi Giang Bridge	-1.90598	3.50704	1.000
	Long Giang Xay 2 Bridge	-4.19444	4.86007	1.000
	Dan Xay Bridge	-2.00000	3.81256	1.000
	Dua River	-3.69444	4.86007	1.000
	Can Gio C2	-3.56944	3.92989	1.000
	Can Gio C3	-1.06944	3.92989	1.000
	Downstream of Long Tau River	-.77778	4.26257	1.000
	Downstream of Soai Rap River	2.77778	3.81256	1.000
	Ganh Rai Gulf	3.47863	3.50704	1.000
	White Tiger Oilfield	1.84127	4.07579	1.000
	Binh Khanh	-5.77500	3.83631	.994
	Rach La Bridge	3.45833	4.36783	1.000
	An Nghia Bridge	1.48864	3.75801	1.000

Multiple Comparisons

Dependent Variable: MPs

Tukey HSD

(I) Positon	(J) Positon	Mean Difference (I-J)	Std. Error	Sig.
-------------	-------------	--------------------------	------------	------

Can Gio C2	Intersection of Dong Tranh	-4.00000	4.04383	1.000
	Ly Nhon	-3.41346	3.63426	1.000
	Can Thanh Wharf	3.50000	4.04383	1.000
	Dong Tranh Cape	2.45833	4.36783	1.000
	30 April Beach	-.33654	3.63426	1.000
	Rach ?on Bridge	-5.64423	3.63426	.991
	Loi Giang Bridge	1.66346	3.63426	1.000
	Long Giang Xay 2 Bridge	-.62500	4.95265	1.000
	Dan Xay Bridge	1.56944	3.92989	1.000
	Dua River	-.12500	4.95265	1.000
	Can Gio C1	3.56944	3.92989	1.000
	Can Gio C3	2.50000	4.04383	1.000
	Downstream of Long Tau River	2.79167	4.36783	1.000
	Downstream of Soai Rap River	6.34722	3.92989	.987
	Ganh Rai Gulf	7.04808	3.63426	.921
	White Tiger Oilfield	5.41071	4.18576	.999
	Binh Khanh	-8.27500	3.83631	.821
	Rach La Bridge	.95833*	4.36783	1.000
	An Nghia Bridge	-1.01136	3.75801	1.000
	Intersection of Dong Tranh	-6.50000	4.04383	.987
Can Gio C3	Ly Nhon	-5.91346	3.63426	.985
	Can Thanh Wharf	1.00000	4.04383	1.000
	Dong Tranh Cape	-.04167	4.36783	1.000
	30 April Beach	-2.83654	3.63426	1.000

Rach ?on Bridge	-8.14423	3.63426	.770
Loi Giang Bridge	-.83654	3.63426	1.000
Long Giang Xay 2 Bridge	-3.12500	4.95265	1.000

Multiple Comparisons

Dependent Variable: MPs

Tukey HSD

(I) Positon	(J) Positon	Mean Difference (I-J)	Std. Error	Sig.
Can Gio C3	Dan Xay Bridge	-.93056	3.92989	1.000
	Dua River	-2.62500	4.95265	1.000
	Can Gio C1	1.06944	3.92989	1.000
	Can Gio C2	-2.50000	4.04383	1.000
	Downstream of Long Tau River	.29167	4.36783	1.000
	Downstream of Soai Rap River	3.84722	3.92989	1.000
	Ganh Rai Gulf	4.54808	3.63426	.999
	White Tiger Oilfield	2.91071	4.18576	1.000
	Binh Khanh	-8.56667	4.17645	.876
	Rach La Bridge	.66667	4.66941	1.000
	An Nghia Bridge	-1.30303	4.10464	1.000
	Intersection of Dong Tranh River	-6.79167	4.36783	.991
	Ly Nhon	-6.20513	3.99165	.991
	Can Thanh Wharf	.70833	4.36783	1.000
	Dong Tranh Cape	-.33333	4.66941	1.000

30 April Beach	-3.12821	3.99165	1.000
Rach ?on Bridge	-8.43590	3.99165	.845
Loi Giang Bridge	-1.12821*	3.99165	1.000
Long Giang Xay 2 Bridge	-3.41667	5.22056	1.000
Dan Xay Bridge	-1.22222	4.26257	1.000
Dua River	-2.91667	5.22056	1.000
Can Gio C1	.77778	4.26257	1.000
Can Gio C2	-2.79167	4.36783	1.000
Can Gio C3	-.29167	4.36783	1.000
Downstream of Soai Rap River	3.55556	4.26257	1.000
Ganh Rai Gulf	4.25641	3.99165	1.000
White Tiger Oilfield	2.61905	4.49955	1.000

Multiple Comparisons

Dependent Variable: MPs

Tukey HSD

(I) Positon	(J) Positon	Mean Difference (I-J)	Std. Error	Sig.
Downstream of Soai Rap River	Binh Khanh	-12.12222	3.71602	.131
	Rach La Bridge	-2.88889	4.26257	1.000
	An Nghia Bridge	-4.85859	3.63513	.999
	Intersection of Dong Tranh	-10.34722	3.92989	.485
	Ly Nhon	-9.76068	3.50704	.378
	Can Thanh Wharf	-2.84722	3.92989	1.000
	Dong Tranh Cape	-3.88889	4.26257	1.000
	30 April Beach	-6.68376	3.50704	.932

Ganh Rai Gulf	Rach ?on Bridge	-11.99145	3.50704	.086
	Loi Giang Bridge	-4.68376	3.50704	.999
	Long Giang Xay 2 Bridge	-6.97222	4.86007	.997
	Dan Xay Bridge	-4.77778	3.81256	.999
	Dua River	-6.47222	4.86007	.999
	Can Gio C1	-2.77778	3.81256	1.000
	Can Gio C2	-6.34722	3.92989	.987
	Can Gio C3	-3.84722	3.92989	1.000
	Downstream of Long Tau River	-3.55556	4.26257	1.000
	Ganh Rai Gulf	.70085 [*]	3.50704	1.000
	White Tiger Oilfield	-.93651	4.07579	1.000
	Binh Khanh	-12.82308	3.40185	.030
	Rach La Bridge	-3.58974	3.99165	1.000
	An Nghia Bridge	-5.55944	3.31329	.980
	Intersection of Dong Tranh	-11.04808	3.63426	.224
	Ly Nhon	-10.46154	3.17224	.120
	Can Thanh Wharf	-3.54808	3.63426	1.000
	Dong Tranh Cape	-4.58974	3.99165	1.000
	30 April Beach	-7.38462	3.17224	.712
	Rach ?on Bridge	-12.69231	3.17224	.014

Multiple Comparisons

Dependent Variable: MPs

Tukey HSD

(I) Positon	(J) Positon		Std. Error	Sig.
-------------	-------------	--	------------	------

		Mean Difference (I-J)		
Ganh Rai Gulf	Loi Giang Bridge	-5.38462	3.17224	.977
	Long Giang Xay 2 Bridge	-7.67308	4.62429	.982
	Dan Xay Bridge	-5.47863	3.50704	.991
	Dua River	-7.17308	4.62429	.991
	Can Gio C1	-3.47863	3.50704	1.000
	Can Gio C2	-7.04808	3.63426	.921
	Can Gio C3	-4.54808	3.63426	.999
	Downstream of Long Tau River	-4.25641	3.99165	1.000
	Downstream of Soai Rap River	-.70085	3.50704	1.000
	White Tiger Oilfield	-1.63736	3.79155	1.000
	Binh Khanh	-11.18571	3.98564	.362
	Rach La Bridge	-1.95238	4.49955	1.000
	An Nghia Bridge	-3.92208	3.91033	1.000
	Intersection of Dong Tranh	-9.41071	4.18576	.766
	Ly Nhon	-8.82418	3.79155	.713
	Can Thanh Wharf	-1.91071	4.18576	1.000
White Tiger Oilfield	Dong Tranh Cape	-2.95238	4.49955	1.000
	30 April Beach	-5.74725*	3.79155	.993
	Rach ?on Bridge	-11.05495	3.79155	.293
	Loi Giang Bridge	-3.74725	3.79155	1.000
	Long Giang Xay 2 Bridge	-6.03571	5.06920	1.000
	Dan Xay Bridge	-3.84127	4.07579	1.000
	Dua River	-5.53571	5.06920	1.000

Can Gio C1	-1.84127	4.07579	1.000
Can Gio C2	-5.41071	4.18576	.999
Can Gio C3	-2.91071	4.18576	1.000
Downstream of Long Tau River	-2.61905	4.49955	1.000

Multiple Comparisons

Dependent Variable: MPs

Tukey HSD

(I) Positon	(J) Positon	Mean Difference (I-J)	Std. Error	Sig.
White Tiger Oilfield	Downstream of Soai Rap River	.93651	4.07579	1.000
	Ganh Rai Gulf	1.63736	3.79155	1.000

*Table S4. Turkey's multiple comparison tests for Saigon urban canals, Can Gio and East Sea***Multiple Comparisons**

Dependent Variable: MPs

Tukey HSD

(I) Positon	(J) Positon	Mean Difference (I-J)	Std. Error	Sig.
Bridge No 1	Can Gio C3	38.20833	10.71815	.128
	Downstream of Long Tau River	38.50000	11.45819	.218
	Downstream of Soai Rap River	42.05556	10.45984	.030
	Ganh Rai Gulf	42.75641	9.79503	.009
	White Tiger Oilfield	41.11905	11.04138	.080
	Bridge No 1	-9.83333	12.81064	1.000
	Nhieu Loc	8.50000	14.03335	1.000
	Hoang Hoa Tham Bridge	9.33333	15.15775	1.000
	Bui Huu Nghia Bridge	-22.25000	14.03335	1.000
	Thi Nghe	2.25000	14.03335	1.000
	Bach ?ang Wharf	14.91667	11.45819	1.000
	Lo Gom Canal	-17.75000	14.03335	1.000
	Tran Quang Dieu Bridge	-8.83333	12.81064	1.000
	Letter Y Bridge	-15.66667	12.81064	1.000
	Nguyen Van Cu Bridge	-.45455	11.58766	1.000
Tran Quang Dieu Bridge	Kenh Te Bridge	-22.50000	12.15324	.997
	Tan Thuan II Bridge	8.70000	11.74115	1.000
	Mong Bridge	2.62500	12.15324	1.000
	Khanh Hoi Bridge	9.00000	15.15775	1.000

Binh Khanh	20.10000	11.74115	.999
Rach La Bridge	29.33333	12.81064	.933
An Nghia Bridge	27.36364	11.58766	.906
Intersection of Dong Tranh	21.87500	12.15324	.998
Ly Nhon	22.46154	11.34748	.990
Can Thanh Wharf	29.37500	12.15324	.881
Dong Tranh Cape	28.33333	12.81064	.955
30 April Beach	25.53846	11.34748	.945
Rach ?on Bridge	20.23077	11.34748	.998

Multiple Comparisons

Dependent Variable: MPs

Tukey HSD

(I) Positon	(J) Positon	Mean Difference (I-J)	Std. Error	Sig.
Bui Huu Nghia Bridge	Bach ?ang Wharf	37.16667	11.45819	.285
	Lo Gom Canal	4.50000	14.03335	1.000
	Cha Va Bridge	13.41667	12.81064	1.000
	Letter Y Bridge	6.58333	12.81064	1.000
	Nguyen Van Cu Bridge	21.79545	11.58766	.996
	Kenh Te Bridge	-.25000	12.15324	1.000
	Tan Thuan II Bridge	30.95000	11.74115	.749
	Mong Bridge	24.87500	12.15324	.984
	Khanh Hoi Bridge	31.25000	15.15775	.982
	Binh Khanh	42.35000	11.74115	.113

Rach La Bridge	51.58333	12.81064	.030
An Nghia Bridge	49.61364	11.58766	.012
Intersection of Dong Tranh	44.12500	12.15324	.106
Ly Nhon	44.71154	11.34748	.040
Can Thanh Wharf	51.62500	12.15324	.013
Dong Tranh Cape	50.58333	12.81064	.039
30 April Beach	47.78846	11.34748	.015
Rach ?on Bridge	42.48077	11.34748	.076
Loi Giang Bridge	49.78846	11.34748	.008
Long Giang Xay 2 Bridge	47.50000	14.03335	.205
Dan Xay Bridge	49.69444	11.92606	.018
Dua River	48.00000	14.03335	.187
Can Gio C1	51.69444	11.92606	.010
Can Gio C2	48.12500	12.15324	.038
Can Gio C3	50.62500	12.15324	.018
Downstream of Long Tau River	50.91667	12.81064	.036
Downstream of Soai Rap River	54.47222	11.92606	.004
Ganh Rai Gulf	55.17308	11.34748	.001

Multiple Comparisons

Dependent Variable: MPs

Tukey HSD

(I) Positon	(J) Positon	Mean Difference (I-J)	Std. Error	Sig.

Bui Huu Nghia Bridge	White Tiger Oilfield	53.53571	12.43924	.011
	Bridge No 1	-12.08333	12.81064	1.000
	Tran Quang Dieu Bridge	-2.25000	14.03335	1.000
	Nhieu Loc	6.25000	14.03335	1.000
	Hoang Hoa Tham Bridge	7.08333	15.15775	1.000
	Bui Huu Nghia Bridge	-24.50000	14.03335	.999
	Bach ?ang Wharf	12.66667	11.45819	1.000
	Lo Gom Canal	-20.00000	14.03335	1.000
	Cha Va Bridge	-11.08333	12.81064	1.000
	Letter Y Bridge	-17.91667	12.81064	1.000
	Nguyen Van Cu Bridge	-2.70455	11.58766	1.000
	Kenh Te Bridge	-24.75000	12.15324	.985
	Tan Thuan II Bridge	6.45000	11.74115	1.000
Thi Nghe	Mong Bridge	.37500	12.15324	1.000
	Khanh Hoi Bridge	6.75000	15.15775	1.000
	Binh Khanh	17.85000	11.74115	1.000
	Rach La Bridge	27.08333	12.81064	.975
	An Nghia Bridge	25.11364	11.58766	.965
	Intersection of Dong Tranh	19.62500	12.15324	1.000
	Ly Nhon	20.21154	11.34748	.998
	Can Thanh Wharf	27.12500	12.15324	.950
	Dong Tranh Cape	26.08333	12.81064	.985
	30 April Beach	23.28846	11.34748	.983
	Rach ?on Bridge	17.98077	11.34748	1.000
	Loi Giang Bridge	25.28846	11.34748	.951
	Long Giang Xay 2 Bridge	23.00000	14.03335	1.000

Dan Xay Bridge	25.19444	11.92606	.975
Dua River	23.50000	14.03335	.999
Can Gio C1	27.19444	11.92606	.936

Multiple Comparisons

Dependent Variable: MPs

Tukey HSD

(I) Positon	(J) Positon	Mean Difference (I-J)	Std. Error	Sig.
Lo Gom Canal	An Nghia Bridge	45.11364	11.58766	.047
	Intersection of Dong Tranh	39.62500	12.15324	.275
	Ly Nhon	40.21154	11.34748	.135
	Can Thanh Wharf	47.12500	12.15324	.049
	Dong Tranh Cape	46.08333	12.81064	.116
	30 April Beach	43.28846	11.34748	.060
	Rach ?on Bridge	37.98077	11.34748	.225
	Loi Giang Bridge	45.28846	11.34748	.034
	Long Giang Xay 2 Bridge	43.00000	14.03335	.411
	Dan Xay Bridge	45.19444	11.92606	.065
	Dua River	43.50000	14.03335	.384
	Can Gio C1	47.19444	11.92606	.038
	Can Gio C2	43.62500	12.15324	.119
	Can Gio C3	46.12500	12.15324	.064
	Downstream of Long Tau River	46.41667	12.81064	.108

Cha Va Bridge	Downstream of Soai Rap River	49.97222	11.92606	.017
	Ganh Rai Gulf	50.67308	11.34748	.006
	White Tiger Oilfield	49.03571	12.43924	.040
	Bridge No 1	-1.00000	11.45819	1.000
	Tran Quang Dieu Bridge	8.83333	12.81064	1.000
	Nhieu Loc	17.33333	12.81064	1.000
	Hoang Hoa Tham Bridge	18.16667	14.03335	1.000
	Bui Huu Nghia Bridge	-13.41667	12.81064	1.000
	Thi Nghe	11.08333	12.81064	1.000
	Bach ?ang Wharf	23.75000	9.92308	.892
	Lo Gom Canal	-8.91667	12.81064	1.000
	Letter Y Bridge	-6.83333	11.45819	1.000
	Nguyen Van Cu Bridge	8.37879	10.07231	1.000

Multiple Comparisons

Dependent Variable: MPs

Tukey HSD

(I) Positon	(J) Positon	Mean Difference (I-J)	Std. Error	Sig.
Kenh Te Bridge	30 April Beach	48.03846	8.91804	.000
	Rach ?on Bridge	42.73077	8.91804	.001
	Loi Giang Bridge	50.03846	8.91804	.000
	Long Giang Xay 2 Bridge	47.75000	12.15324	.042
	Dan Xay Bridge	49.94444	9.64350	.000
	Dua River	48.25000	12.15324	.036

Tan Thuan II Bridge	Can Gio C1	51.94444	9.64350	.000
	Can Gio C2	48.37500	9.92308	.001
	Can Gio C3	50.87500	9.92308	.000
	Downstream of Long Tau River	51.16667	10.71815	.002
	Downstream of Soai Rap River	54.72222	9.64350	.000
	Ganh Rai Gulf	55.42308	8.91804	.000
	White Tiger Oilfield	53.78571	10.27136	.000
	Bridge No 1	-18.53333	10.24851	.998
	Tran Quang Dieu Bridge	-8.70000	11.74115	1.000
	Nhieu Loc	-.20000	11.74115	1.000
	Hoang Hoa Tham Bridge	.63333	13.06434	1.000
	Bui Huu Nghia Bridge	-30.95000	11.74115	.749
	Thi Nghe	-6.45000	11.74115	1.000
	Bach ?ang Wharf	6.21667	8.49762	1.000
	Lo Gom Canal	-26.45000	11.74115	.944
	Cha Va Bridge	-17.53333	10.24851	.999
	Letter Y Bridge	-24.36667	10.24851	.899
	Nguyen Van Cu Bridge	-9.15455	8.67141	1.000
	Kenh Te Bridge	-31.20000	9.41386	.243
	Mong Bridge	-6.07500	9.41386	1.000
	Khanh Hoi Bridge	.30000	13.06434	1.000
	Binh Khanh	11.40000	8.87547	1.000

Multiple Comparisons**Dependent Variable: MPs****Tukey HSD**

(I) Positon	(J) Positon	Mean Difference (I-J)	Std. Error	Sig.
Letter Y Bridge	Bui Huu Nghia Bridge	-6.58333	12.81064	1.000
	Thi Nghe	17.91667	12.81064	1.000
	Bach ?ang Wharf	30.58333	9.92308	.397
	Lo Gom Canal	-2.08333	12.81064	1.000
	Cha Va Bridge	6.83333	11.45819	1.000
	Nguyen Van Cu Bridge	15.21212	10.07231	1.000
	Kenh Te Bridge	-6.83333	10.71815	1.000
	Tan Thuan II Bridge	24.36667	10.24851	.899
	Mong Bridge	18.29167	10.71815	.999
	Khanh Hoi Bridge	24.66667	14.03335	.999
	Binh Khanh	35.76667	10.24851	.156
	Rach La Bridge	45.00000	11.45819	.042
	An Nghia Bridge	43.03030	10.07231	.012
	Intersection of Dong Tranh	37.54167	10.71815	.151
	Ly Nhon	38.12821	9.79503	.047
	Can Thanh Wharf	45.04167	10.71815	.016
	Dong Tranh Cape	44.00000	11.45819	.056
	30 April Beach	41.20513	9.79503	.016
	Rach ?on Bridge	35.89744	9.79503	.096
	Loi Giang Bridge	43.20513	9.79503	.007

Long Giang Xay 2 Bridge	40.91667	12.81064	.318
Dan Xay Bridge	43.11111	10.45984	.021
Dua River	41.41667	12.81064	.292
Can Gio C1	45.11111	10.45984	.010
Can Gio C2	41.54167	10.71815	.050
Can Gio C3	44.04167	10.71815	.022
Downstream of Long Tau River	44.33333	11.45819	.051
Downstream of Soai Rap River	47.88889	10.45984	.004

Multiple Comparisons

Dependent Variable: MPs

Tukey HSD

(I) Positon	(J) Positon	Mean Difference (I-J)	Std. Error	Sig.
Letter Y Bridge	Ganh Rai Gulf	48.58974	9.79503	.001
	White Tiger Oilfield	46.95238	11.04138	.013
	Bridge No 1	-9.37879	10.07231	1.000
	Tran Quang Dieu Bridge	.45455	11.58766	1.000
	Nhieu Loc	8.95455	11.58766	1.000
Nguyen Van Cu Bridge	Hoang Hoa Tham Bridge	9.78788	12.92658	1.000
	Bui Huu Nghia Bridge	-21.79545	11.58766	.996
	Thi Nghe	2.70455	11.58766	1.000
	Bach ?ang Wharf	15.37121	8.28425	.996

Lo Gom Canal	-17.29545	11.58766	1.000
Cha Va Bridge	-8.37879	10.07231	1.000
Letter Y Bridge	-15.21212	10.07231	1.000
Kenh Te Bridge	-22.04545	9.22172	.894
Tan Thuan II Bridge	9.15455	8.67141	1.000
Mong Bridge	3.07955	9.22172	1.000
Khanh Hoi Bridge	9.45455	12.92658	1.000
Binh Khanh	20.55455	8.67141	.902
Rach La Bridge	29.78788	10.07231	.495
An Nghia Bridge	27.81818	8.46243	.259
Intersection of Dong Tranh	22.32955	9.22172	.879
Ly Nhon	22.91608	8.13044	.608
Can Thanh Wharf	29.82955	9.22172	.291
Dong Tranh Cape	28.78788	10.07231	.576
30 April Beach	25.99301	8.13044	.316
Rach ?on Bridge	20.68531	8.13044	.811
Loi Giang Bridge	27.99301	8.13044	.177
Long Giang Xay 2 Bridge	25.70455	11.58766	.954
Dan Xay Bridge	27.89899	8.92019	.364
Dua River	26.20455	11.58766	.942

Multiple Comparisons**Dependent Variable: MPs****Tukey HSD**

(I) Positon	(J) Positon		Std. Error	Sig.
-------------	-------------	--	------------	------

		Mean Difference (I-J)		
Cha Va Bridge	Kenh Te Bridge	-13.66667	10.71815	1.000
	Tan Thuan II Bridge	17.53333	10.24851	.999
	Mong Bridge	11.45833	10.71815	1.000
	Khanh Hoi Bridge	17.83333	14.03335	1.000
	Binh Khanh	28.93333	10.24851	.604
	Rach La Bridge	38.16667	11.45819	.234
	An Nghia Bridge	36.19697	10.07231	.118
	Intersection of Dong Tranh	30.70833	10.71815	.570
	Ly Nhon	31.29487	9.79503	.317
	Can Thanh Wharf	38.20833	10.71815	.128
	Dong Tranh Cape	37.16667	11.45819	.285
	30 April Beach	34.37179	9.79503	.149
	Rach ?on Bridge	29.06410	9.79503	.487
	Loi Giang Bridge	36.37179	9.79503	.083
	Long Giang Xay 2 Bridge	34.08333	12.81064	.731
	Dan Xay Bridge	36.27778	10.45984	.166
	Dua River	34.58333	12.81064	.702
	Can Gio C1	38.27778	10.45984	.097
	Can Gio C2	34.70833	10.71815	.289
	Can Gio C3	37.20833	10.71815	.164
	Downstream of Long Tau River	37.50000	11.45819	.267
	Downstream of Soai Rap River	41.05556	10.45984	.042

Letter Y Bridge	Ganh Rai Gulf	41.75641	9.79503	.013
	White Tiger Oilfield	40.11905	11.04138	.105
	Bridge No 1	5.83333	11.45819	1.000
	Tran Quang Dieu Bridge	15.66667	12.81064	1.000
	Nhieu Loc	24.16667	12.81064	.995
	Hoang Hoa Tham Bridge	25.00000	14.03335	.998

Multiple Comparisons

Dependent Variable: MPs

Tukey HSD

(I) Positon	(J) Positon	Mean Difference (I-J)	Std. Error	Sig.
Kenh Te Bridge	Nguyen Van Cu Bridge	29.89899	8.92019	.222
	Can Gio C1			
	Can Gio C2	26.32955	9.22172	.578
	Can Gio C3	28.82955	9.22172	.365
	Downstream of Long Tau River	29.12121	10.07231	.549
	Downstream of Soai Rap River	32.67677	8.92019	.096
	Ganh Rai Gulf	33.37762	8.13044	.023
	White Tiger Oilfield	31.74026	9.59549	.247
	Bridge No 1	12.66667	10.71815	1.000
	Tran Quang Dieu Bridge	22.50000	12.15324	.997
	Nhieu Loc	31.00000	12.15324	.807
	Hoang Hoa Tham Bridge	31.83333	13.43591	.903
	Bui Huu Nghia Bridge	.25000	12.15324	1.000

Thi Nghe	24.75000	12.15324	.985
Bach ?ang Wharf	37.41667	9.05849	.021
Lo Gom Canal	4.75000	12.15324	1.000
Cha Va Bridge	13.66667	10.71815	1.000
Letter Y Bridge	6.83333	10.71815	1.000
Nguyen Van Cu Bridge	22.04545	9.22172	.894
Tan Thuan II Bridge	31.20000	9.41386	.243
Mong Bridge	25.12500	9.92308	.818
Khanh Hoi Bridge	31.50000	13.43591	.913
Binh Khanh	42.60000	9.41386	.005
Rach La Bridge	51.83333	10.71815	.001
An Nghia Bridge	49.86364	9.22172	.000
Intersection of Dong Tranh	44.37500	9.92308	.006
Ly Nhon	44.96154	8.91804	.000
Can Thanh Wharf	51.87500	9.92308	.000
Dong Tranh Cape	50.83333	10.71815	.002

Multiple Comparisons

Dependent Variable: MPs

Tukey HSD

(I) Positon	(J) Positon	Mean Difference (I-J)	Std. Error	Sig.
Nhieu Loc	Intersection of Dong Tranh	13.37500	12.15324	1.000
	Ly Nhon	13.96154	11.34748	1.000
	Can Thanh Wharf	20.87500	12.15324	.999

Hoang Hoa Tham Bridge	Dong Tranh Cape	19.83333	12.81064	1.000
	30 April Beach	17.03846	11.34748	1.000
	Rach ?on Bridge	11.73077	11.34748	1.000
	Loi Giang Bridge	19.03846	11.34748	.999
	Long Giang Xay 2 Bridge	16.75000	14.03335	1.000
	Dan Xay Bridge	18.94444	11.92606	1.000
	Dua River	17.25000	14.03335	1.000
	Can Gio C1	20.94444	11.92606	.999
	Can Gio C2	17.37500	12.15324	1.000
	Can Gio C3	19.87500	12.15324	1.000
	Downstream of Long Tau River	20.16667	12.81064	1.000
	Downstream of Soai Rap River	23.72222	11.92606	.989
	Ganh Rai Gulf	24.42308	11.34748	.968
	White Tiger Oilfield	22.78571	12.43924	.997
	Bridge No 1	-19.16667	14.03335	1.000
	Tran Quang Dieu Bridge	-9.33333	15.15775	1.000
	Nhieu Loc	-.83333	15.15775	1.000
	Bui Huu Nghia Bridge	-31.58333	15.15775	.979
	Thi Nghe	-7.08333	15.15775	1.000
	Bach ?ang Wharf	5.58333	12.81064	1.000
	Lo Gom Canal	-27.08333	15.15775	.998
	Cha Va Bridge	-18.16667	14.03335	1.000
	Letter Y Bridge	-25.00000	14.03335	.998
	Nguyen Van Cu Bridge	-9.78788	12.92658	1.000

Kenh Te Bridge	-31.83333	13.43591	.903
----------------	-----------	----------	------

Multiple Comparisons

Dependent Variable: MPs

Tukey HSD

(I) Positon	(J) Positon	Mean Difference (I-J)	Std. Error	Sig.
Hoang Hoa Tham Bridge	Tan Thuan II Bridge	-.63333	13.06434	1.000
	Mong Bridge	-6.70833	13.43591	1.000
	Khanh Hoi Bridge	-.33333	16.20432	1.000
	Binh Khanh	10.76667	13.06434	1.000
	Rach La Bridge	20.00000	14.03335	1.000
	An Nghia Bridge	18.03030	12.92658	1.000
	Intersection of Dong Tranh	12.54167	13.43591	1.000
	Ly Nhon	13.12821	12.71172	1.000
	Can Thanh Wharf	20.04167	13.43591	1.000
	Dong Tranh Cape	19.00000	14.03335	1.000
	30 April Beach	16.20513	12.71172	1.000
	Rach ?on Bridge	10.89744	12.71172	1.000
	Loi Giang Bridge	18.20513	12.71172	1.000
	Long Giang Xay 2 Bridge	15.91667	15.15775	1.000
	Dan Xay Bridge	18.11111	13.23077	1.000
	Dua River	16.41667	15.15775	1.000
	Can Gio C1	20.11111	13.23077	1.000
	Can Gio C2	16.54167	13.43591	1.000

Bui Huu Nghia Bridge	Can Gio C3	19.04167	13.43591	1.000
	Downstream of Long Tau River	19.33333	14.03335	1.000
	Downstream of Soai Rap River	22.88889	13.23077	.999
	Ganh Rai Gulf	23.58974	12.71172	.996
	White Tiger Oilfield	21.95238	13.69515	1.000
	Bridge No 1	12.41667	12.81064	1.000
	Tran Quang Dieu Bridge	22.25000	14.03335	1.000
	Nhieu Loc	30.75000	14.03335	.960
	Hoang Hoa Tham Bridge	31.58333	15.15775	.979
	Thi Nghe	24.50000	14.03335	.999

Multiple Comparisons

Dependent Variable: MPs

Tukey HSD

(I) Positon	(J) Positon	Mean Difference (I-J)	Std. Error	Sig.
Thi Nghe	Can Gio C2	23.62500	12.15324	.993
	Can Gio C3	26.12500	12.15324	.969
	Downstream of Long Tau River	26.41667	12.81064	.982
	Downstream of Soai Rap River	29.97222	11.92606	.830
	Ganh Rai Gulf	30.67308	11.34748	.699
	White Tiger Oilfield	29.03571	12.43924	.917
	Bridge No 1	-24.75000	9.92308	.841
Bach Đang Wharf	Bridge No 1	-24.75000	9.92308	.841

Tran Quang Dieu Bridge	-14.91667	11.45819	1.000
Nhieu Loc	-6.41667	11.45819	1.000
Hoang Hoa Tham Bridge	-5.58333	12.81064	1.000
Bui Huu Nghia Bridge	-37.16667	11.45819	.285
Thi Nghe	-12.66667	11.45819	1.000
Lo Gom Canal	-32.66667	11.45819	.582
Cha Va Bridge	-23.75000	9.92308	.892
Letter Y Bridge	-30.58333	9.92308	.397
Nguyen Van Cu Bridge	-15.37121	8.28425	.996
Kenh Te Bridge	-37.41667	9.05849	.021
Tan Thuan II Bridge	-6.21667	8.49762	1.000
Mong Bridge	-12.29167	9.05849	1.000
Khanh Hoi Bridge	-5.91667	12.81064	1.000
Binh Khanh	5.18333	8.49762	1.000
Rach La Bridge	14.41667	9.92308	1.000
An Nghia Bridge	12.44697	8.28425	1.000
Intersection of Dong Tranh	6.95833	9.05849	1.000
Ly Nhon	7.54487	7.94482	1.000
Can Thanh Wharf	14.45833	9.05849	1.000
Dong Tranh Cape	13.41667	9.92308	1.000
30 April Beach	10.62179	7.94482	1.000

Multiple Comparisons

Dependent Variable: MPs

Tukey HSD

(I) Positon	(J) Positon	Mean Difference (I-J)	Std. Error	Sig.
Bach ?ang Wharf	Rach ?on Bridge	5.31410	7.94482	1.000
	Loi Giang Bridge	12.62179	7.94482	1.000
	Long Giang Xay 2 Bridge	10.33333	11.45819	1.000
	Dan Xay Bridge	12.52778	8.75133	1.000
	Dua River	10.83333	11.45819	1.000
	Can Gio C1	14.52778	8.75133	1.000
	Can Gio C2	10.95833	9.05849	1.000
	Can Gio C3	13.45833	9.05849	1.000
	Downstream of Long Tau River	13.75000	9.92308	1.000
	Downstream of Soai Rap River	17.30556	8.75133	.990
	Ganh Rai Gulf	18.00641	7.94482	.940
	White Tiger Oilfield	16.36905	9.43873	.999
	Bridge No 1	7.91667	12.81064	1.000
	Tran Quang Dieu Bridge	17.75000	14.03335	1.000
	Nhieu Loc	26.25000	14.03335	.996
	Hoang Hoa Tham Bridge	27.08333	15.15775	.998
	Bui Huu Nghia Bridge	-4.50000	14.03335	1.000
	Thi Nghe	20.00000	14.03335	1.000
	Bach ?ang Wharf	32.66667	11.45819	.582
	Cha Va Bridge	8.91667	12.81064	1.000
Lo Gom Canal	Letter Y Bridge	2.08333	12.81064	1.000
	Nguyen Van Cu Bridge	17.29545	11.58766	1.000

Kenh Te Bridge	-4.75000	12.15324	1.000
Tan Thuan II Bridge	26.45000	11.74115	.944
Mong Bridge	20.37500	12.15324	.999
Khanh Hoi Bridge	26.75000	15.15775	.999
Binh Khanh	37.85000	11.74115	.298
Rach La Bridge	47.08333	12.81064	.093

Multiple Comparisons

Dependent Variable: MPs

Tukey HSD

(I) Positon	(J) Positon	Mean Difference (I-J)	Std. Error	Sig.
Tan Thuan II Bridge	Rach La Bridge	20.63333	10.24851	.987
	An Nghia Bridge	18.66364	8.67141	.968
	Intersection of Dong Tranh	13.17500	9.41386	1.000
	Ly Nhon	13.76154	8.34774	1.000
	Can Thanh Wharf	20.67500	9.41386	.959
	Dong Tranh Cape	19.63333	10.24851	.994
	30 April Beach	16.83846	8.34774	.987
	Rach ?on Bridge	11.53077	8.34774	1.000
	Loi Giang Bridge	18.83846	8.34774	.943
	Long Giang Xay 2 Bridge	16.55000	11.74115	1.000
	Dan Xay Bridge	18.74444	9.11868	.983
	Dua River	17.05000	11.74115	1.000

Mong Bridge	Can Gio C1	20.74444	9.11868	.938
	Can Gio C2	17.17500	9.41386	.997
	Can Gio C3	19.67500	9.41386	.978
	Downstream of Long Tau River	19.96667	10.24851	.992
	Downstream of Soai Rap River	23.52222	9.11868	.788
	Ganh Rai Gulf	24.22308	8.34774	.540
	White Tiger Oilfield	22.58571	9.78029	.926
	Bridge No 1	-12.45833	10.71815	1.000
	Tran Quang Dieu Bridge	-2.62500	12.15324	1.000
	Nhieu Loc	5.87500	12.15324	1.000
	Hoang Hoa Tham Bridge	6.70833	13.43591	1.000
	Bui Huu Nghia Bridge	-24.87500	12.15324	.984
	Thi Nghe	-.37500	12.15324	1.000
	Bach ?ang Wharf	12.29167	9.05849	1.000
	Lo Gom Canal	-20.37500	12.15324	.999
	Cha Va Bridge	-11.45833	10.71815	1.000

Multiple Comparisons

Dependent Variable: MPs

Tukey HSD

(I) Positon	(J) Positon	Mean Difference (I-J)	Std. Error	Sig.
Mong Bridge	Letter Y Bridge	-18.29167	10.71815	.999
	Nguyen Van Cu Bridge	-3.07955	9.22172	1.000

Kenh Te Bridge	-25.12500	9.92308	.818
Tan Thuan II Bridge	6.07500	9.41386	1.000
Khanh Hoi Bridge	6.37500	13.43591	1.000
Binh Khanh	17.47500	9.41386	.996
Rach La Bridge	26.70833	10.71815	.842
An Nghia Bridge	24.73864	9.22172	.715
Intersection of Dong Tranh	19.25000	9.92308	.993
Ly Nhon	19.83654	8.91804	.952
Can Thanh Wharf	26.75000	9.92308	.705
Dong Tranh Cape	25.70833	10.71815	.890
30 April Beach	22.91346	8.91804	.795
Rach ?on Bridge	17.60577	8.91804	.991
Loi Giang Bridge	24.91346	8.91804	.628
Long Giang Xay 2 Bridge	22.62500	12.15324	.996
Dan Xay Bridge	24.81944	9.64350	.792
Dua River	23.12500	12.15324	.995
Can Gio C1	26.81944	9.64350	.638
Can Gio C2	23.25000	9.92308	.914
Can Gio C3	25.75000	9.92308	.778
Downstream of Long Tau River	26.04167	10.71815	.875
Downstream of Soai Rap River	29.59722	9.64350	.407
Ganh Rai Gulf	30.29808	8.91804	.199
White Tiger Oilfield	28.66071	10.27136	.631

Khanh Hoi Bridge	Bridge No 1	-18.83333	14.03335	1.000
	Tran Quang Dieu Bridge	-9.00000	15.15775	1.000
	Nhieu Loc	-.50000	15.15775	1.000

Multiple Comparisons

Dependent Variable: MPs

Tukey HSD

(I) Positon	(J) Positon	Mean Difference (I-J)	Std. Error	Sig.
Khanh Hoi Bridge	Hoang Hoa Tham Bridge	.33333	16.20432	1.000
	Bui Huu Nghia Bridge	-31.25000	15.15775	.982
	Thi Nghe	-6.75000	15.15775	1.000
	Bach ?ang Wharf	5.91667	12.81064	1.000
	Lo Gom Canal	-26.75000	15.15775	.999
	Cha Va Bridge	-17.83333	14.03335	1.000
	Letter Y Bridge	-24.66667	14.03335	.999
	Nguyen Van Cu Bridge	-9.45455	12.92658	1.000
	Kenh Te Bridge	-31.50000	13.43591	.913
	Tan Thuan II Bridge	-.30000	13.06434	1.000
	Mong Bridge	-6.37500	13.43591	1.000
	Binh Khanh	11.10000	13.06434	1.000
	Rach La Bridge	20.33333	14.03335	1.000
	An Nghia Bridge	18.36364	12.92658	1.000
	Intersection of Dong Tranh	12.87500	13.43591	1.000

Ly Nhon	13.46154	12.71172	1.000
Can Thanh Wharf	20.37500	13.43591	1.000
Dong Tranh Cape	19.33333	14.03335	1.000
30 April Beach	16.53846	12.71172	1.000
Rach ?on Bridge	11.23077	12.71172	1.000
Loi Giang Bridge	18.53846	12.71172	1.000
Long Giang Xay 2 Bridge	16.25000	15.15775	1.000
Dan Xay Bridge	18.44444	13.23077	1.000
Dua River	16.75000	15.15775	1.000
Can Gio C1	20.44444	13.23077	1.000
Can Gio C2	16.87500	13.43591	1.000
Can Gio C3	19.37500	13.43591	1.000
Downstream of Long Tau River	19.66667	14.03335	1.000

Multiple Comparisons

Dependent Variable: MPs

Tukey HSD

(I) Positon	(J) Positon	Mean Difference (I-J)	Std. Error	Sig.
Khanh Hoi Bridge	Downstream of Soai Rap River	23.22222	13.23077	.999
	Ganh Rai Gulf	23.92308	12.71172	.996
	White Tiger Oilfield	22.28571	13.69515	1.000
Binh Khanh	Bridge No 1	-29.93333	10.24851	.525

Tran Quang Dieu Bridge	-20.10000	11.74115	.999
Nhieu Loc	-11.60000	11.74115	1.000
Hoang Hoa Tham Bridge	-10.76667	13.06434	1.000
Bui Huu Nghia Bridge	-42.35000	11.74115	.113
Thi Nghe	-17.85000	11.74115	1.000
Bach ?ang Wharf	-5.18333	8.49762	1.000
Lo Gom Canal	-37.85000	11.74115	.298
Cha Va Bridge	-28.93333	10.24851	.604
Letter Y Bridge	-35.76667	10.24851	.156
Nguyen Van Cu Bridge	-20.55455	8.67141	.902
Kenh Te Bridge	-42.60000	9.41386	.005
Tan Thuan II Bridge	-11.40000	8.87547	1.000
Mong Bridge	-17.47500	9.41386	.996
Khanh Hoi Bridge	-11.10000	13.06434	1.000
Rach La Bridge	9.23333	10.24851	1.000
An Nghia Bridge	7.26364	8.67141	1.000
Intersection of Dong Tranh	1.77500	9.41386	1.000
Ly Nhon	2.36154	8.34774	1.000
Can Thanh Wharf	9.27500	9.41386	1.000
Dong Tranh Cape	8.23333	10.24851	1.000
30 April Beach	5.43846	8.34774	1.000
Rach ?on Bridge	.13077	8.34774	1.000
Loi Giang Bridge	7.43846	8.34774	1.000
Long Giang Xay 2 Bridge	5.15000	11.74115	1.000

Multiple Comparisons

Dependent Variable: MPs

Tukey HSD

(I) Positon	(J) Positon	Mean Difference (I-J)	Std. Error	Sig.
Binh Khanh	Dan Xay Bridge	7.34444	9.11868	1.000
	Dua River	5.65000	11.74115	1.000
	Can Gio C1	9.34444	9.11868	1.000
	Can Gio C2	5.77500	9.41386	1.000
	Can Gio C3	8.27500	9.41386	1.000
	Downstream of Long Tau River	8.56667	10.24851	1.000
	Downstream of Soai Rap River	12.12222	9.11868	1.000
	Ganh Rai Gulf	12.82308	8.34774	1.000
	White Tiger Oilfield	11.18571	9.78029	1.000
	Bridge No 1	-39.16667	11.45819	.188
	Tran Quang Dieu Bridge	-29.33333	12.81064	.933
	Nhieu Loc	-20.83333	12.81064	1.000
	Hoang Hoa Tham Bridge	-20.00000	14.03335	1.000
	Bui Huu Nghia Bridge	-51.58333	12.81064	.030
Rach La Bridge	Thi Nghe	-27.08333	12.81064	.975
	Bach ?ang Wharf	-14.41667	9.92308	1.000
	Lo Gom Canal	-47.08333	12.81064	.093
	Cha Va Bridge	-38.16667	11.45819	.234
	Letter Y Bridge	-45.00000	11.45819	.042
	Nguyen Van Cu Bridge	-29.78788	10.07231	.495

Kenh Te Bridge	-51.83333	10.71815	.001
Tan Thuan II Bridge	-20.63333	10.24851	.987
Mong Bridge	-26.70833	10.71815	.842
Khanh Hoi Bridge	-20.33333	14.03335	1.000
Binh Khanh	-9.23333	10.24851	1.000
An Nghia Bridge	-1.96970	10.07231	1.000
Intersection of Dong Tranh	-7.45833	10.71815	1.000
Ly Nhon	-6.87179	9.79503	1.000

Multiple Comparisons

Dependent Variable: MPs

Tukey HSD

(I) Positon	(J) Positon	Mean Difference (I-J)	Std. Error	Sig.
Rach La Bridge	Can Thanh Wharf	.04167	10.71815	1.000
	Dong Tranh Cape	-1.00000	11.45819	1.000
	30 April Beach	-3.79487	9.79503	1.000
	Rach ?on Bridge	-9.10256	9.79503	1.000
	Loi Giang Bridge	-1.79487	9.79503	1.000
	Long Giang Xay 2 Bridge	-4.08333	12.81064	1.000
	Dan Xay Bridge	-1.88889	10.45984	1.000
	Dua River	-3.58333	12.81064	1.000
	Can Gio C1	.11111	10.45984	1.000
	Can Gio C2	-3.45833	10.71815	1.000
	Can Gio C3	-.95833	10.71815	1.000

An Nghia Bridge	Downstream of Long Tau River	-.66667	11.45819	1.000
	Downstream of Soai Rap River	2.88889	10.45984	1.000
	Ganh Rai Gulf	3.58974	9.79503	1.000
	White Tiger Oilfield	1.95238	11.04138	1.000
	Bridge No 1	-37.19697	10.07231	.088
	Tran Quang Dieu Bridge	-27.36364	11.58766	.906
	Nhieu Loc	-18.86364	11.58766	1.000
	Hoang Hoa Tham Bridge	-18.03030	12.92658	1.000
	Bui Huu Nghia Bridge	-49.61364	11.58766	.012
	Thi Nghe	-25.11364	11.58766	.965
	Bach ?ang Wharf	-12.44697	8.28425	1.000
	Lo Gom Canal	-45.11364	11.58766	.047
	Cha Va Bridge	-36.19697	10.07231	.118
	Letter Y Bridge	-43.03030	10.07231	.012
	Nguyen Van Cu Bridge	-27.81818	8.46243	.259
	Kenh Te Bridge	-49.86364	9.22172	.000
	Tan Thuan II Bridge	-18.66364	8.67141	.968

Multiple Comparisons

Dependent Variable: MPs

Tukey HSD

(I) Positon	(J) Positon	Mean Difference (I-J)	Std. Error	Sig.
An Nghia Bridge	Mong Bridge	-24.73864	9.22172	.715

	Khanh Hoi Bridge	-18.36364	12.92658	1.000
	Binh Khanh	-7.26364	8.67141	1.000
	Rach La Bridge	1.96970	10.07231	1.000
	Intersection of Dong Tranh	-5.48864	9.22172	1.000
	Ly Nhon	-4.90210	8.13044	1.000
	Can Thanh Wharf	2.01136	9.22172	1.000
	Dong Tranh Cape	.96970	10.07231	1.000
	30 April Beach	-1.82517	8.13044	1.000
	Rach ?on Bridge	-7.13287	8.13044	1.000
	Loi Giang Bridge	.17483	8.13044	1.000
	Long Giang Xay 2 Bridge	-2.11364	11.58766	1.000
	Dan Xay Bridge	.08081	8.92019	1.000
	Dua River	-1.61364	11.58766	1.000
	Can Gio C1	2.08081	8.92019	1.000
	Can Gio C2	-1.48864	9.22172	1.000
	Can Gio C3	1.01136	9.22172	1.000
	Downstream of Long Tau River	1.30303	10.07231	1.000
	Downstream of Soai Rap River	4.85859	8.92019	1.000
	Ganh Rai Gulf	5.55944	8.13044	1.000
	White Tiger Oilfield	3.92208	9.59549	1.000
	Bridge No 1	-31.70833	10.71815	.494
Intersection of Dong Tranh	Tran Quang Dieu Bridge	-21.87500	12.15324	.998
	Nhieu Loc	-13.37500	12.15324	1.000
	Hoang Hoa Tham Bridge	-12.54167	13.43591	1.000

Bui Huu Nghia Bridge	-44.12500	12.15324	.106
Thi Nghe	-19.62500	12.15324	1.000
Bach ?ang Wharf	-6.95833	9.05849	1.000

Multiple Comparisons

Dependent Variable: MPs

Tukey HSD

(I) Positon	(J) Positon	Mean Difference (I-J)	Std. Error	Sig.
Intersection of Dong Tranh	Lo Gom Canal	-39.62500	12.15324	.275
	Cha Va Bridge	-30.70833	10.71815	.570
	Letter Y Bridge	-37.54167	10.71815	.151
	Nguyen Van Cu Bridge	-22.32955	9.22172	.879
	Kenh Te Bridge	-44.37500	9.92308	.006
	Tan Thuan II Bridge	-13.17500	9.41386	1.000
	Mong Bridge	-19.25000	9.92308	.993
	Khanh Hoi Bridge	-12.87500	13.43591	1.000
	Binh Khanh	-1.77500	9.41386	1.000
	Rach La Bridge	7.45833	10.71815	1.000
	An Nghia Bridge	5.48864	9.22172	1.000
	Ly Nhon	.58654	8.91804	1.000
	Can Thanh Wharf	7.50000	9.92308	1.000
	Dong Tranh Cape	6.45833	10.71815	1.000
	30 April Beach	3.66346	8.91804	1.000
	Rach ?on Bridge	-1.64423	8.91804	1.000

	Loi Giang Bridge	5.66346	8.91804	1.000
	Long Giang Xay 2 Bridge	3.37500	12.15324	1.000
	Dan Xay Bridge	5.56944	9.64350	1.000
	Dua River	3.87500	12.15324	1.000
	Can Gio C1	7.56944	9.64350	1.000
	Can Gio C2	4.00000	9.92308	1.000
	Can Gio C3	6.50000	9.92308	1.000
	Downstream of Long Tau River	6.79167	10.71815	1.000
	Downstream of Soai Rap River	10.34722	9.64350	1.000
	Ganh Rai Gulf	11.04808	8.91804	1.000
	White Tiger Oilfield	9.41071	10.27136	1.000
Ly Nhon	Bridge No 1	-32.29487	9.79503	.253

Multiple Comparisons

Dependent Variable: MPs

Tukey HSD

(I) Positon	(J) Positon	Mean Difference (I-J)	Std. Error	Sig.
Ly Nhon	Tran Quang Dieu Bridge	-22.46154	11.34748	.990
	Nhieu Loc	-13.96154	11.34748	1.000
	Hoang Hoa Tham Bridge	-13.12821	12.71172	1.000
	Bui Huu Nghia Bridge	-44.71154	11.34748	.040

Thi Nghe	-20.21154	11.34748	.998
Bach ?ang Wharf	-7.54487	7.94482	1.000
Lo Gom Canal	-40.21154	11.34748	.135
Cha Va Bridge	-31.29487	9.79503	.317
Letter Y Bridge	-38.12821	9.79503	.047
Nguyen Van Cu Bridge	-22.91608	8.13044	.608
Kenh Te Bridge	-44.96154	8.91804	.000
Tan Thuan II Bridge	-13.76154	8.34774	1.000
Mong Bridge	-19.83654	8.91804	.952
Khanh Hoi Bridge	-13.46154	12.71172	1.000
Binh Khanh	-2.36154	8.34774	1.000
Rach La Bridge	6.87179	9.79503	1.000
An Nghia Bridge	4.90210	8.13044	1.000
Intersection of Dong Tranh	-.58654	8.91804	1.000
Can Thanh Wharf	6.91346	8.91804	1.000
Dong Tranh Cape	5.87179	9.79503	1.000
30 April Beach	3.07692	7.78430	1.000
Rach ?on Bridge	-2.23077	7.78430	1.000
Loi Giang Bridge	5.07692	7.78430	1.000
Long Giang Xay 2 Bridge	2.78846	11.34748	1.000
Dan Xay Bridge	4.98291	8.60587	1.000
Dua River	3.28846	11.34748	1.000
Can Gio C1	6.98291	8.60587	1.000
Can Gio C2	3.41346	8.91804	1.000

Can Gio C3	5.91346	8.91804	1.000
------------	---------	---------	-------

Multiple Comparisons

Dependent Variable: MPs

Tukey HSD

(I) Positon	(J) Positon	Mean Difference (I-J)	Std. Error	Sig.
Ly Nhon	Downstream of Long Tau River	6.20513	9.79503	1.000
	Downstream of Soai Rap River	9.76068	8.60587	1.000
	Ganh Rai Gulf	10.46154	7.78430	1.000
	White Tiger Oilfield	8.82418	9.30402	1.000
	Bridge No 1	-39.20833	10.71815	.098
	Tran Quang Dieu Bridge	-29.37500	12.15324	.881
	Nhieu Loc	-20.87500	12.15324	.999
	Hoang Hoa Tham Bridge	-20.04167	13.43591	1.000
	Bui Huu Nghia Bridge	-51.62500	12.15324	.013
	Thi Nghe	-27.12500	12.15324	.950
	Bach ?ang Wharf	-14.45833	9.05849	1.000
Can Thanh Wharf	Lo Gom Canal	-47.12500	12.15324	.049
	Cha Va Bridge	-38.20833	10.71815	.128
	Letter Y Bridge	-45.04167	10.71815	.016
	Nguyen Van Cu Bridge	-29.82955	9.22172	.291
	Kenh Te Bridge	-51.87500	9.92308	.000
	Tan Thuan II Bridge	-20.67500	9.41386	.959
	Mong Bridge	-26.75000	9.92308	.705

Khanh Hoi Bridge	-20.37500	13.43591	1.000
Binh Khanh	-9.27500	9.41386	1.000
Rach La Bridge	-.04167	10.71815	1.000
An Nghia Bridge	-2.01136	9.22172	1.000
Intersection of Dong Tranh	-7.50000	9.92308	1.000
Ly Nhon	-6.91346	8.91804	1.000
Dong Tranh Cape	-1.04167	10.71815	1.000
30 April Beach	-3.83654	8.91804	1.000
Rach ?on Bridge	-9.14423	8.91804	1.000
Loi Giang Bridge	-1.83654	8.91804	1.000

Multiple Comparisons

Dependent Variable: MPs

Tukey HSD

(I) Positon	(J) Positon	Mean Difference (I-J)	Std. Error	Sig.
Can Thanh Wharf	Long Giang Xay 2 Bridge	-4.12500	12.15324	1.000
	Dan Xay Bridge	-1.93056	9.64350	1.000
	Dua River	-3.62500	12.15324	1.000
	Can Gio C1	.06944	9.64350	1.000
	Can Gio C2	-3.50000	9.92308	1.000
	Can Gio C3	-1.00000	9.92308	1.000
	Downstream of Long Tau River	-.70833	10.71815	1.000
	Downstream of Soai Rap River	2.84722	9.64350	1.000

Dong Tranh Cape	Ganh Rai Gulf	3.54808	8.91804	1.000
	White Tiger Oilfield	1.91071	10.27136	1.000
	Bridge No 1	-38.16667	11.45819	.234
	Tran Quang Dieu Bridge	-28.33333	12.81064	.955
	Nhieu Loc	-19.83333	12.81064	1.000
	Hoang Hoa Tham Bridge	-19.00000	14.03335	1.000
	Bui Huu Nghia Bridge	-50.58333	12.81064	.039
	Thi Nghe	-26.08333	12.81064	.985
	Bach ?ang Wharf	-13.41667	9.92308	1.000
	Lo Gom Canal	-46.08333	12.81064	.116
	Cha Va Bridge	-37.16667	11.45819	.285
	Letter Y Bridge	-44.00000	11.45819	.056
	Nguyen Van Cu Bridge	-28.78788	10.07231	.576
	Kenh Te Bridge	-50.83333	10.71815	.002
	Tan Thuan II Bridge	-19.63333	10.24851	.994
	Mong Bridge	-25.70833	10.71815	.890
	Khanh Hoi Bridge	-19.33333	14.03335	1.000
	Binh Khanh	-8.23333	10.24851	1.000
	Rach La Bridge	1.00000	11.45819	1.000
	An Nghia Bridge	-.96970	10.07231	1.000

Multiple Comparisons

Dependent Variable: MPs

Tukey HSD

(I) Positon	(J) Positon		Std. Error	Sig.
-------------	-------------	--	------------	------

		Mean Difference (I-J)		
Dong Tranh Cape	Intersection of Dong Tranh	-6.45833	10.71815	1.000
	Ly Nhon	-5.87179	9.79503	1.000
	Can Thanh Wharf	1.04167	10.71815	1.000
	30 April Beach	-2.79487	9.79503	1.000
	Rach ?on Bridge	-8.10256	9.79503	1.000
	Loi Giang Bridge	-.79487	9.79503	1.000
	Long Giang Xay 2 Bridge	-3.08333	12.81064	1.000
	Dan Xay Bridge	-.88889	10.45984	1.000
	Dua River	-2.58333	12.81064	1.000
	Can Gio C1	1.11111	10.45984	1.000
	Can Gio C2	-2.45833	10.71815	1.000
	Can Gio C3	.04167	10.71815	1.000
	Downstream of Long Tau River	.33333	11.45819	1.000
	Downstream of Soai Rap River	3.88889	10.45984	1.000
	Ganh Rai Gulf	4.58974	9.79503	1.000
	White Tiger Oilfield	2.95238	11.04138	1.000
	Bridge No 1	-35.37179	9.79503	.112
	Tran Quang Dieu Bridge	-25.53846	11.34748	.945
	Nhieu Loc	-17.03846	11.34748	1.000
	Hoang Hoa Tham Bridge	-16.20513	12.71172	1.000
30 April Beach	Bui Huu Nghia Bridge	-47.78846	11.34748	.015
	Thi Nghe	-23.28846	11.34748	.983

Bach ?ang Wharf	-10.62179	7.94482	1.000
Lo Gom Canal	-43.28846	11.34748	.060
Cha Va Bridge	-34.37179	9.79503	.149
Letter Y Bridge	-41.20513	9.79503	.016
Nguyen Van Cu Bridge	-25.99301	8.13044	.316
Kenh Te Bridge	-48.03846	8.91804	.000

Multiple Comparisons

Dependent Variable: MPs

Tukey HSD

(I) Positon	(J) Positon	Mean Difference (I-J)	Std. Error	Sig.
30 April Beach	Tan Thuan II Bridge	-16.83846	8.34774	.987
	Mong Bridge	-22.91346	8.91804	.795
	Khanh Hoi Bridge	-16.53846	12.71172	1.000
	Binh Khanh	-5.43846	8.34774	1.000
	Rach La Bridge	3.79487	9.79503	1.000
	An Nghia Bridge	1.82517	8.13044	1.000
	Intersection of Dong Tranh	-3.66346	8.91804	1.000
	Ly Nhon	-3.07692	7.78430	1.000
	Can Thanh Wharf	3.83654	8.91804	1.000
	Dong Tranh Cape	2.79487	9.79503	1.000
	Rach ?on Bridge	-5.30769	7.78430	1.000
	Loi Giang Bridge	2.00000	7.78430	1.000
	Long Giang Xay 2 Bridge	-.28846	11.34748	1.000

Rach ?on Bridge	Dan Xay Bridge	1.90598	8.60587	1.000
	Dua River	.21154	11.34748	1.000
	Can Gio C1	3.90598	8.60587	1.000
	Can Gio C2	.33654	8.91804	1.000
	Can Gio C3	2.83654	8.91804	1.000
	Downstream of Long Tau River	3.12821	9.79503	1.000
	Downstream of Soai Rap River	6.68376	8.60587	1.000
	Ganh Rai Gulf	7.38462	7.78430	1.000
	White Tiger Oilfield	5.74725	9.30402	1.000
	Bridge No 1	-30.06410	9.79503	.407
	Tran Quang Dieu Bridge	-20.23077	11.34748	.998
	Nhieu Loc	-11.73077	11.34748	1.000
	Hoang Hoa Tham Bridge	-10.89744	12.71172	1.000
	Bui Huu Nghia Bridge	-42.48077	11.34748	.076
	Thi Nghe	-17.98077	11.34748	1.000

Multiple Comparisons

Dependent Variable: MPs

Tukey HSD

(I) Positon	(J) Positon	Mean Difference (I-J)	Std. Error	Sig.
Rach ?on Bridge	Bach ?ang Wharf	-5.31410	7.94482	1.000
	Lo Gom Canal	-37.98077	11.34748	.225

Cha Va Bridge	-29.06410	9.79503	.487
Letter Y Bridge	-35.89744	9.79503	.096
Nguyen Van Cu Bridge	-20.68531	8.13044	.811
Kenh Te Bridge	-42.73077	8.91804	.001
Tan Thuan II Bridge	-11.53077	8.34774	1.000
Mong Bridge	-17.60577	8.91804	.991
Khanh Hoi Bridge	-11.23077	12.71172	1.000
Binh Khanh	-.13077	8.34774	1.000
Rach La Bridge	9.10256	9.79503	1.000
An Nghia Bridge	7.13287	8.13044	1.000
Intersection of Dong Tranh	1.64423	8.91804	1.000
Ly Nhon	2.23077	7.78430	1.000
Can Thanh Wharf	9.14423	8.91804	1.000
Dong Tranh Cape	8.10256	9.79503	1.000
30 April Beach	5.30769	7.78430	1.000
Loi Giang Bridge	7.30769	7.78430	1.000
Long Giang Xay 2 Bridge	5.01923	11.34748	1.000
Dan Xay Bridge	7.21368	8.60587	1.000
Dua River	5.51923	11.34748	1.000
Can Gio C1	9.21368	8.60587	1.000
Can Gio C2	5.64423	8.91804	1.000
Can Gio C3	8.14423	8.91804	1.000
Downstream of Long Tau River	8.43590	9.79503	1.000

Downstream of Soai Rap River	11.99145	8.60587	1.000
Ganh Rai Gulf	12.69231	7.78430	1.000
White Tiger Oilfield	11.05495	9.30402	1.000

Dependent Variable: MPs

Tukey HSD

(I) Positon	(J) Positon	Mean Difference (I-J)	Std. Error	Sig.
Loi Giang Bridge	Bridge No 1	-37.37179	9.79503	.060
	Tran Quang Dieu Bridge	-27.53846	11.34748	.877
	Nhieu Loc	-19.03846	11.34748	.999
	Hoang Hoa Tham Bridge	-18.20513	12.71172	1.000
	Bui Huu Nghia Bridge	-49.78846	11.34748	.008
	Thi Nghe	-25.28846	11.34748	.951
	Bach ?ang Wharf	-12.62179	7.94482	1.000
	Lo Gom Canal	-45.28846	11.34748	.034
	Cha Va Bridge	-36.37179	9.79503	.083
	Letter Y Bridge	-43.20513	9.79503	.007
	Nguyen Van Cu Bridge	-27.99301	8.13044	.177
	Kenh Te Bridge	-50.03846	8.91804	.000
	Tan Thuan II Bridge	-18.83846	8.34774	.943
	Mong Bridge	-24.91346	8.91804	.628
	Khanh Hoi Bridge	-18.53846	12.71172	1.000
	Binh Khanh	-7.43846	8.34774	1.000

Rach La Bridge	1.79487	9.79503	1.000
An Nghia Bridge	-.17483	8.13044	1.000
Intersection of Dong Tranh	-5.66346	8.91804	1.000
Ly Nhon	-5.07692	7.78430	1.000
Can Thanh Wharf	1.83654	8.91804	1.000
Dong Tranh Cape	.79487	9.79503	1.000
30 April Beach	-2.00000	7.78430	1.000
Rach ?on Bridge	-7.30769	7.78430	1.000
Long Giang Xay 2 Bridge	-2.28846	11.34748	1.000
Dan Xay Bridge	-.09402	8.60587	1.000
Dua River	-1.78846	11.34748	1.000
Can Gio C1	1.90598	8.60587	1.000
Can Gio C2	-1.66346	8.91804	1.000

Multiple Comparisons

Dependent Variable: MPs

Tukey HSD

(I) Positon	(J) Positon	Mean Difference (I-J)	Std. Error	Sig.
Loi Giang Bridge	Can Gio C3	.83654	8.91804	1.000
	Downstream of Long Tau River	1.12821	9.79503	1.000
	Downstream of Soai Rap River	4.68376	8.60587	1.000
	Ganh Rai Gulf	5.38462	7.78430	1.000
	White Tiger Oilfield	3.74725	9.30402	1.000

	Bridge No 1	-35.08333	12.81064	.672
	Tran Quang Dieu Bridge	-25.25000	14.03335	.998
	Nhieu Loc	-16.75000	14.03335	1.000
	Hoang Hoa Tham Bridge	-15.91667	15.15775	1.000
	Bui Huu Nghia Bridge	-47.50000	14.03335	.205
	Thi Nghe	-23.00000	14.03335	1.000
	Bach ?ang Wharf	-10.33333	11.45819	1.000
	Lo Gom Canal	-43.00000	14.03335	.411
	Cha Va Bridge	-34.08333	12.81064	.731
	Letter Y Bridge	-40.91667	12.81064	.318
	Nguyen Van Cu Bridge	-25.70455	11.58766	.954
Long Giang Xay 2 Bridge	Kenh Te Bridge	-47.75000	12.15324	.042
	Tan Thuan II Bridge	-16.55000	11.74115	1.000
	Mong Bridge	-22.62500	12.15324	.996
	Khanh Hoi Bridge	-16.25000	15.15775	1.000
	Binh Khanh	-5.15000	11.74115	1.000
	Rach La Bridge	4.08333	12.81064	1.000
	An Nghia Bridge	2.11364	11.58766	1.000
	Intersection of Dong Tranh	-3.37500	12.15324	1.000
	Ly Nhon	-2.78846	11.34748	1.000
	Can Thanh Wharf	4.12500	12.15324	1.000
	Dong Tranh Cape	3.08333	12.81064	1.000
	30 April Beach	.28846	11.34748	1.000

Multiple Comparisons

Dependent Variable: MPs

Tukey HSD

(I) Positon	(J) Positon	Mean Difference (I-J)	Std. Error	Sig.
Long Giang Xay 2 Bridge	Rach ?on Bridge	-5.01923	11.34748	1.000
	Loi Giang Bridge	2.28846	11.34748	1.000
	Dan Xay Bridge	2.19444	11.92606	1.000
	Dua River	.50000	14.03335	1.000
	Can Gio C1	4.19444	11.92606	1.000
	Can Gio C2	.62500	12.15324	1.000
	Can Gio C3	3.12500	12.15324	1.000
	Downstream of Long Tau River	3.41667	12.81064	1.000
	Downstream of Soai Rap River	6.97222	11.92606	1.000
	Ganh Rai Gulf	7.67308	11.34748	1.000
	White Tiger Oilfield	6.03571	12.43924	1.000
	Bridge No 1	-37.27778	10.45984	.128
	Tran Quang Dieu Bridge	-27.44444	11.92606	.929
	Nhieu Loc	-18.94444	11.92606	1.000
	Hoang Hoa Tham Bridge	-18.11111	13.23077	1.000
Dan Xay Bridge	Bui Huu Nghia Bridge	-49.69444	11.92606	.018
	Thi Nghe	-25.19444	11.92606	.975
	Bach ?ang Wharf	-12.52778	8.75133	1.000
	Lo Gom Canal	-45.19444	11.92606	.065
	Cha Va Bridge	-36.27778	10.45984	.166

Letter Y Bridge	-43.11111	10.45984	.021
Nguyen Van Cu Bridge	-27.89899	8.92019	.364
Kenh Te Bridge	-49.94444	9.64350	.000
Tan Thuan II Bridge	-18.74444	9.11868	.983
Mong Bridge	-24.81944	9.64350	.792
Khanh Hoi Bridge	-18.44444	13.23077	1.000
Binh Khanh	-7.34444	9.11868	1.000
Rach La Bridge	1.88889	10.45984	1.000

Multiple Comparisons

Dependent Variable: MPs

Tukey HSD

(I) Positon	(J) Positon	Mean Difference (I-J)	Std. Error	Sig.
Dan Xay Bridge	An Nghia Bridge	-.08081	8.92019	1.000
	Intersection of Dong Tranh	-5.56944	9.64350	1.000
	Ly Nhon	-4.98291	8.60587	1.000
	Can Thanh Wharf	1.93056	9.64350	1.000
	Dong Tranh Cape	.88889	10.45984	1.000
	30 April Beach	-1.90598	8.60587	1.000
	Rach ?on Bridge	-7.21368	8.60587	1.000
	Loi Giang Bridge	.09402	8.60587	1.000
	Long Giang Xay 2 Bridge	-2.19444	11.92606	1.000
	Dua River	-1.69444	11.92606	1.000
	Can Gio C1	2.00000	9.35557	1.000

Dua River	Can Gio C2	-1.56944	9.64350	1.000
	Can Gio C3	.93056	9.64350	1.000
	Downstream of Long Tau River	1.22222	10.45984	1.000
	Downstream of Soai Rap River	4.77778	9.35557	1.000
	Ganh Rai Gulf	5.47863	8.60587	1.000
	White Tiger Oilfield	3.84127	10.00152	1.000
	Bridge No 1	-35.58333	12.81064	.641
	Tran Quang Dieu Bridge	-25.75000	14.03335	.997
	Nhieu Loc	-17.25000	14.03335	1.000
	Hoang Hoa Tham Bridge	-16.41667	15.15775	1.000
	Bui Huu Nghia Bridge	-48.00000	14.03335	.187
	Thi Nghe	-23.50000	14.03335	.999
	Bach ?ang Wharf	-10.83333	11.45819	1.000
	Lo Gom Canal	-43.50000	14.03335	.384
	Cha Va Bridge	-34.58333	12.81064	.702
	Letter Y Bridge	-41.41667	12.81064	.292
	Nguyen Van Cu Bridge	-26.20455	11.58766	.942

Multiple Comparisons

Dependent Variable: MPs

Tukey HSD

(I) Positon	(J) Positon	Mean Difference (I-J)	Std. Error	Sig.
Dua River	Kenh Te Bridge	-48.25000	12.15324	.036

	Tan Thuan II Bridge	-17.05000	11.74115	1.000
	Mong Bridge	-23.12500	12.15324	.995
	Khanh Hoi Bridge	-16.75000	15.15775	1.000
	Binh Khanh	-5.65000	11.74115	1.000
	Rach La Bridge	3.58333	12.81064	1.000
	An Nghia Bridge	1.61364	11.58766	1.000
	Intersection of Dong Tranh	-3.87500	12.15324	1.000
	Ly Nhon	-3.28846	11.34748	1.000
	Can Thanh Wharf	3.62500	12.15324	1.000
	Dong Tranh Cape	2.58333	12.81064	1.000
	30 April Beach	-.21154	11.34748	1.000
	Rach ?on Bridge	-5.51923	11.34748	1.000
	Loi Giang Bridge	1.78846	11.34748	1.000
	Long Giang Xay 2 Bridge	-.50000	14.03335	1.000
	Dan Xay Bridge	1.69444	11.92606	1.000
	Can Gio C1	3.69444	11.92606	1.000
	Can Gio C2	.12500	12.15324	1.000
	Can Gio C3	2.62500	12.15324	1.000
	Downstream of Long Tau River	2.91667	12.81064	1.000
	Downstream of Soai Rap River	6.47222	11.92606	1.000
	Ganh Rai Gulf	7.17308	11.34748	1.000
	White Tiger Oilfield	5.53571	12.43924	1.000
Can Gio C1	Bridge No 1	-39.27778	10.45984	.073

Tran Quang Dieu Bridge	-29.44444	11.92606	.855
Nhieu Loc	-20.94444	11.92606	.999
Hoang Hoa Tham Bridge	-20.11111	13.23077	1.000
Bui Huu Nghia Bridge	-51.69444	11.92606	.010

Multiple Comparisons

Dependent Variable: MPs

Tukey HSD

(I) Positon	(J) Positon	Mean Difference (I-J)	Std. Error	Sig.
Can Gio C1	Thi Nghe	-27.19444	11.92606	.936
	Bach ?ang Wharf	-14.52778	8.75133	1.000
	Lo Gom Canal	-47.19444	11.92606	.038
	Cha Va Bridge	-38.27778	10.45984	.097
	Letter Y Bridge	-45.11111	10.45984	.010
	Nguyen Van Cu Bridge	-29.89899	8.92019	.222
	Kenh Te Bridge	-51.94444	9.64350	.000
	Tan Thuan II Bridge	-20.74444	9.11868	.938
	Mong Bridge	-26.81944	9.64350	.638
	Khanh Hoi Bridge	-20.44444	13.23077	1.000
	Binh Khanh	-9.34444	9.11868	1.000
	Rach La Bridge	-.11111	10.45984	1.000
	An Nghia Bridge	-2.08081	8.92019	1.000
	Intersection of Dong Tranh	-7.56944	9.64350	1.000

Ly Nhon	-6.98291	8.60587	1.000
Can Thanh Wharf	-.06944	9.64350	1.000
Dong Tranh Cape	-1.11111	10.45984	1.000
30 April Beach	-3.90598	8.60587	1.000
Rach ?on Bridge	-9.21368	8.60587	1.000
Loi Giang Bridge	-1.90598	8.60587	1.000
Long Giang Xay 2 Bridge	-4.19444	11.92606	1.000
Dan Xay Bridge	-2.00000	9.35557	1.000
Dua River	-3.69444	11.92606	1.000
Can Gio C2	-3.56944	9.64350	1.000
Can Gio C3	-1.06944	9.64350	1.000
Downstream of Long Tau River	-.77778	10.45984	1.000
Downstream of Soai Rap River	2.77778	9.35557	1.000
Ganh Rai Gulf	3.47863	8.60587	1.000

Multiple Comparisons

Dependent Variable: MPs

Tukey HSD

(I) Positon	(J) Positon	Mean Difference (I-J)	Std. Error	Sig.
Can Gio C1	White Tiger Oilfield	1.84127	10.00152	1.000
	Bridge No 1	-35.70833	10.71815	.233
Can Gio C2	Tran Quang Dieu Bridge	-25.87500	12.15324	.972

Nhieu Loc	-17.37500	12.15324	1.000
Hoang Hoa Tham Bridge	-16.54167	13.43591	1.000
Bui Huu Nghia Bridge	-48.12500	12.15324	.038
Thi Nghe	-23.62500	12.15324	.993
Bach ?ang Wharf	-10.95833	9.05849	1.000
Lo Gom Canal	-43.62500	12.15324	.119
Cha Va Bridge	-34.70833	10.71815	.289
Letter Y Bridge	-41.54167	10.71815	.050
Nguyen Van Cu Bridge	-26.32955	9.22172	.578
Kenh Te Bridge	-48.37500	9.92308	.001
Tan Thuan II Bridge	-17.17500	9.41386	.997
Mong Bridge	-23.25000	9.92308	.914
Khanh Hoi Bridge	-16.87500	13.43591	1.000
Binh Khanh	-5.77500	9.41386	1.000
Rach La Bridge	3.45833	10.71815	1.000
An Nghia Bridge	1.48864	9.22172	1.000
Intersection of Dong Tranh	-4.00000	9.92308	1.000
Ly Nhon	-3.41346	8.91804	1.000
Can Thanh Wharf	3.50000	9.92308	1.000
Dong Tranh Cape	2.45833	10.71815	1.000
30 April Beach	-.33654	8.91804	1.000
Rach ?on Bridge	-5.64423	8.91804	1.000
Loi Giang Bridge	1.66346	8.91804	1.000
Long Giang Xay 2 Bridge	-.62500	12.15324	1.000
Dan Xay Bridge	1.56944	9.64350	1.000
Dua River	-.12500	12.15324	1.000

Multiple Comparisons

Dependent Variable: MPs

Tukey HSD

(I) Positon	(J) Positon	Mean Difference (I-J)	Std. Error	Sig.
Can Gio C2	Can Gio C1	3.56944	9.64350	1.000
	Can Gio C3	2.50000	9.92308	1.000
	Downstream of Long Tau River	2.79167	10.71815	1.000
	Downstream of Soai Rap River	6.34722	9.64350	1.000
	Ganh Rai Gulf	7.04808	8.91804	1.000
	White Tiger Oilfield	5.41071	10.27136	1.000
	Bridge No 1	-38.20833	10.71815	.128
	Tran Quang Dieu Bridge	-28.37500	12.15324	.917
	Nhieu Loc	-19.87500	12.15324	1.000
	Hoang Hoa Tham Bridge	-19.04167	13.43591	1.000
	Bui Huu Nghia Bridge	-50.62500	12.15324	.018
	Thi Nghe	-26.12500	12.15324	.969
Can Gio C3	Bach ?ang Wharf	-13.45833	9.05849	1.000
	Lo Gom Canal	-46.12500	12.15324	.064
	Cha Va Bridge	-37.20833	10.71815	.164
	Letter Y Bridge	-44.04167	10.71815	.022
	Nguyen Van Cu Bridge	-28.82955	9.22172	.365
	Kenh Te Bridge	-50.87500	9.92308	.000
	Tan Thuan II Bridge	-19.67500	9.41386	.978

Mong Bridge	-25.75000	9.92308	.778
Khanh Hoi Bridge	-19.37500	13.43591	1.000
Binh Khanh	-8.27500	9.41386	1.000
Rach La Bridge	.95833	10.71815	1.000
An Nghia Bridge	-1.01136	9.22172	1.000
Intersection of Dong Tranh	-6.50000	9.92308	1.000
Ly Nhon	-5.91346	8.91804	1.000
Can Thanh Wharf	1.00000	9.92308	1.000
Dong Tranh Cape	-.04167	10.71815	1.000

Multiple Comparisons

Dependent Variable: MPs

Tukey HSD

(I) Positon	(J) Positon	Mean Difference (I-J)	Std. Error	Sig.
Can Gio C3	30 April Beach	-2.83654	8.91804	1.000
	Rach ?on Bridge	-8.14423	8.91804	1.000
	Loi Giang Bridge	-.83654	8.91804	1.000
	Long Giang Xay 2 Bridge	-3.12500	12.15324	1.000
	Dan Xay Bridge	-.93056	9.64350	1.000
	Dua River	-2.62500	12.15324	1.000
	Can Gio C1	1.06944	9.64350	1.000
	Can Gio C2	-2.50000	9.92308	1.000
	Downstream of Long Tau River	.29167	10.71815	1.000

Downstream of Long Tau River	Downstream of Soai Rap River	3.84722	9.64350	1.000
	Ganh Rai Gulf	4.54808	8.91804	1.000
	White Tiger Oilfield	2.91071	10.27136	1.000
	Bridge No 1	-38.50000	11.45819	.218
	Tran Quang Dieu Bridge	-28.66667	12.81064	.948
	Nhieu Loc	-20.16667	12.81064	1.000
	Hoang Hoa Tham Bridge	-19.33333	14.03335	1.000
	Bui Huu Nghia Bridge	-50.91667	12.81064	.036
	Thi Nghe	-26.41667	12.81064	.982
	Bach ?ang Wharf	-13.75000	9.92308	1.000
	Lo Gom Canal	-46.41667	12.81064	.108
	Cha Va Bridge	-37.50000	11.45819	.267
	Letter Y Bridge	-44.33333	11.45819	.051
	Nguyen Van Cu Bridge	-29.12121	10.07231	.549
	Kenh Te Bridge	-51.16667	10.71815	.002
	Tan Thuan II Bridge	-19.96667	10.24851	.992
	Mong Bridge	-26.04167	10.71815	.875
	Khanh Hoi Bridge	-19.66667	14.03335	1.000
	Binh Khanh	-8.56667	10.24851	1.000

Multiple Comparisons

Dependent Variable: MPs

Tukey HSD

(I) Positon	(J) Positon	Mean Difference (I-J)	Std. Error	Sig.
-------------	-------------	--------------------------	------------	------

Downstream of Long Tau River	Rach La Bridge	.66667	11.45819	1.000
	An Nghia Bridge	-1.30303	10.07231	1.000
	Intersection of Dong Tranh	-6.79167	10.71815	1.000
	Ly Nhon	-6.20513	9.79503	1.000
	Can Thanh Wharf	.70833	10.71815	1.000
	Dong Tranh Cape	-.33333	11.45819	1.000
	30 April Beach	-3.12821	9.79503	1.000
	Rach ?on Bridge	-8.43590	9.79503	1.000
	Loi Giang Bridge	-1.12821	9.79503	1.000
	Long Giang Xay 2 Bridge	-3.41667	12.81064	1.000
	Dan Xay Bridge	-1.22222	10.45984	1.000
	Dua River	-2.91667	12.81064	1.000
	Can Gio C1	.77778	10.45984	1.000
	Can Gio C2	-2.79167	10.71815	1.000
	Can Gio C3	-.29167	10.71815	1.000
	Downstream of Soai Rap River	3.55556	10.45984	1.000
	Ganh Rai Gulf	4.25641	9.79503	1.000
	White Tiger Oilfield	2.61905	11.04138	1.000
	Bridge No 1	-42.05556	10.45984	.030
	Tran Quang Dieu Bridge	-32.22222	11.92606	.700
Downstream of Soai Rap River	Nhieu Loc	-23.72222	11.92606	.989
	Hoang Hoa Tham Bridge	-22.88889	13.23077	.999
	Bui Huu Nghia Bridge	-54.47222	11.92606	.004
	Thi Nghe	-29.97222	11.92606	.830

Bach ?ang Wharf	-17.30556	8.75133	.990
Lo Gom Canal	-49.97222	11.92606	.017
Cha Va Bridge	-41.05556	10.45984	.042
Letter Y Bridge	-47.88889	10.45984	.004

Multiple Comparisons

Dependent Variable: MPs

Tukey HSD

(I) Positon	(J) Positon	Mean Difference (I-J)	Std. Error	Sig.
Downstream of Soai Rap River	Nguyen Van Cu Bridge	-32.67677	8.92019	.096
	Kenh Te Bridge	-54.72222	9.64350	.000
	Tan Thuan II Bridge	-23.52222	9.11868	.788
	Mong Bridge	-29.59722	9.64350	.407
	Khanh Hoi Bridge	-23.22222	13.23077	.999
	Binh Khanh	-12.12222	9.11868	1.000
	Rach La Bridge	-2.88889	10.45984	1.000
	An Nghia Bridge	-4.85859	8.92019	1.000
	Intersection of Dong Tranh	-10.34722	9.64350	1.000
	Ly Nhon	-9.76068	8.60587	1.000
	Can Thanh Wharf	-2.84722	9.64350	1.000
	Dong Tranh Cape	-3.88889	10.45984	1.000
	30 April Beach	-6.68376	8.60587	1.000
	Rach ?on Bridge	-11.99145	8.60587	1.000

Ganh Rai Gulf	Loi Giang Bridge	-4.68376	8.60587	1.000
	Long Giang Xay 2 Bridge	-6.97222	11.92606	1.000
	Dan Xay Bridge	-4.77778	9.35557	1.000
	Dua River	-6.47222	11.92606	1.000
	Can Gio C1	-2.77778	9.35557	1.000
	Can Gio C2	-6.34722	9.64350	1.000
	Can Gio C3	-3.84722	9.64350	1.000
	Downstream of Long Tau River	-3.55556	10.45984	1.000
	Ganh Rai Gulf	.70085	8.60587	1.000
	White Tiger Oilfield	-.93651	10.00152	1.000
	Bridge No 1	-42.75641	9.79503	.009
	Tran Quang Dieu Bridge	-32.92308	11.34748	.540
	Nhieu Loc	-24.42308	11.34748	.968
	Hoang Hoa Tham Bridge	-23.58974	12.71172	.996

Multiple Comparisons

Dependent Variable: MPs

Tukey HSD

(I) Positon	(J) Positon	Mean Difference (I-J)	Std. Error	Sig.
Ganh Rai Gulf	Bui Huu Nghia Bridge	-55.17308	11.34748	.001
	Thi Nghe	-30.67308	11.34748	.699
	Bach ?ang Wharf	-18.00641	7.94482	.940
	Lo Gom Canal	-50.67308	11.34748	.006

Cha Va Bridge	-41.75641	9.79503	.013
Letter Y Bridge	-48.58974	9.79503	.001
Nguyen Van Cu Bridge	-33.37762	8.13044	.023
Kenh Te Bridge	-55.42308	8.91804	.000
Tan Thuan II Bridge	-24.22308	8.34774	.540
Mong Bridge	-30.29808	8.91804	.199
Khanh Hoi Bridge	-23.92308	12.71172	.996
Binh Khanh	-12.82308	8.34774	1.000
Rach La Bridge	-3.58974	9.79503	1.000
An Nghia Bridge	-5.55944	8.13044	1.000
Intersection of Dong Tranh	-11.04808	8.91804	1.000
Ly Nhon	-10.46154	7.78430	1.000
Can Thanh Wharf	-3.54808	8.91804	1.000
Dong Tranh Cape	-4.58974	9.79503	1.000
30 April Beach	-7.38462	7.78430	1.000
Rach ?on Bridge	-12.69231	7.78430	1.000
Loi Giang Bridge	-5.38462	7.78430	1.000
Long Giang Xay 2 Bridge	-7.67308	11.34748	1.000
Dan Xay Bridge	-5.47863	8.60587	1.000
Dua River	-7.17308	11.34748	1.000
Can Gio C1	-3.47863	8.60587	1.000
Can Gio C2	-7.04808	8.91804	1.000
Can Gio C3	-4.54808	8.91804	1.000
Downstream of Long Tau River	-4.25641	9.79503	1.000

Multiple Comparisons

Dependent Variable: MPs

Tukey HSD

(I) Positon	(J) Positon	Mean Difference (I-J)	Std. Error	Sig.
Ganh Rai Gulf	Downstream of Soai Rap River	-.70085	8.60587	1.000
	White Tiger Oilfield	-1.63736	9.30402	1.000
	Bridge No 1	-41.11905	11.04138	.080
	Tran Quang Dieu Bridge	-31.28571	12.43924	.829
	Nhieu Loc	-22.78571	12.43924	.997
	Hoang Hoa Tham Bridge	-21.95238	13.69515	1.000
	Bui Huu Nghia Bridge	-53.53571	12.43924	.011
	Thi Nghe	-29.03571	12.43924	.917
	Bach ?ang Wharf	-16.36905	9.43873	.999
	Lo Gom Canal	-49.03571	12.43924	.040
	Cha Va Bridge	-40.11905	11.04138	.105
White Tiger Oilfield	Letter Y Bridge	-46.95238	11.04138	.013
	Nguyen Van Cu Bridge	-31.74026	9.59549	.247
	Kenh Te Bridge	-53.78571	10.27136	.000
	Tan Thuan II Bridge	-22.58571	9.78029	.926
	Mong Bridge	-28.66071	10.27136	.631
	Khanh Hoi Bridge	-22.28571	13.69515	1.000
	Binh Khanh	-11.18571	9.78029	1.000
	Rach La Bridge	-1.95238	11.04138	1.000
	An Nghia Bridge	-3.92208	9.59549	1.000
	Intersection of Dong Tranh	-9.41071	10.27136	1.000

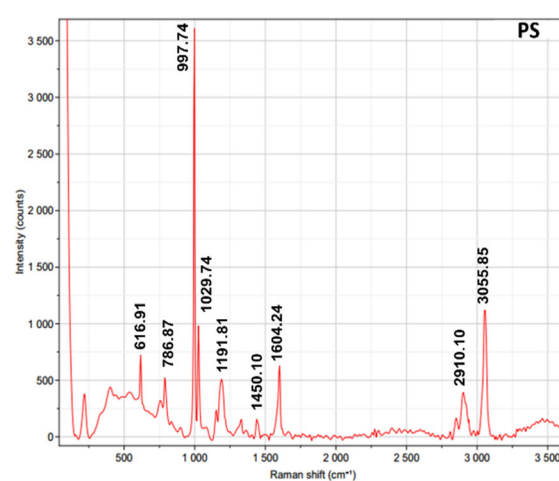
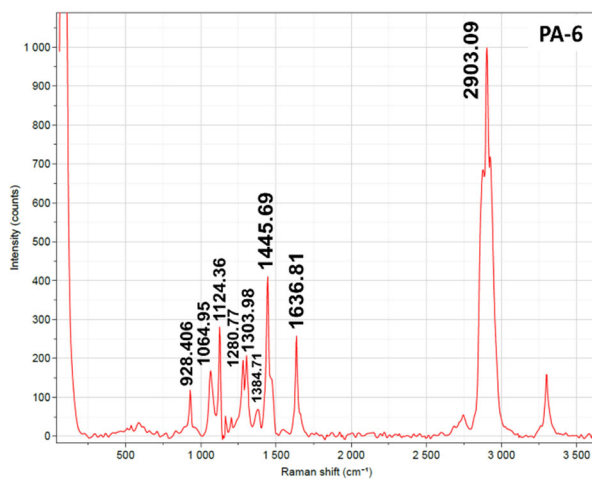
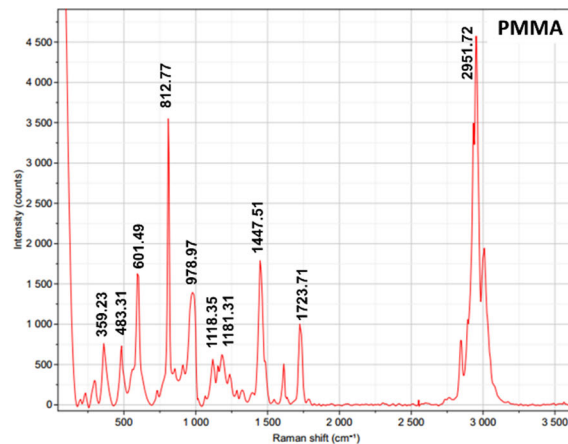
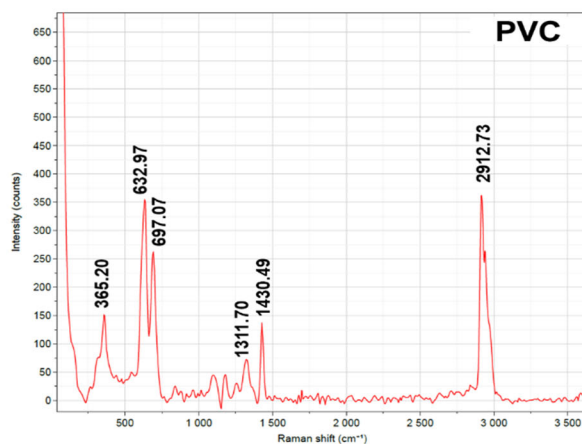
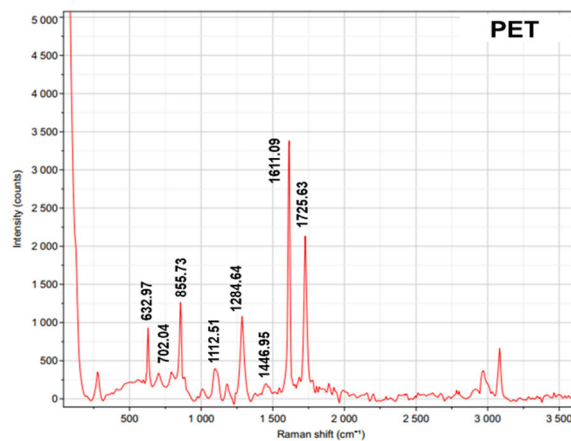
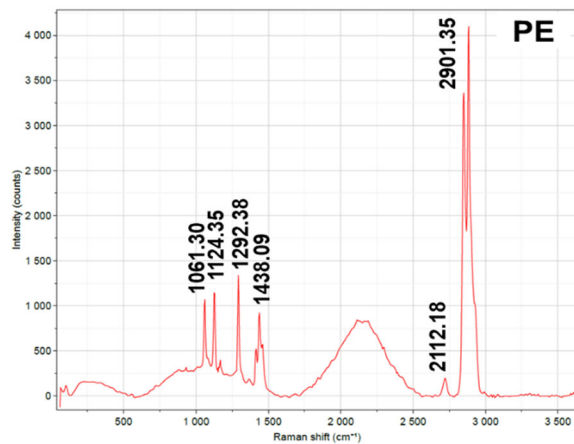
Ly Nhon	-8.82418	9.30402	1.000
Can Thanh Wharf	-1.91071	10.27136	1.000
Dong Tranh Cape	-2.95238	11.04138	1.000
30 April Beach	-5.74725	9.30402	1.000
Rach ?on Bridge	-11.05495	9.30402	1.000
Loi Giang Bridge	-3.74725	9.30402	1.000
Long Giang Xay 2 Bridge	-6.03571	12.43924	1.000

Multiple Comparisons

Dependent Variable: MPs

Tukey HSD

(I) Positon	(J) Positon	Mean Difference (I-J)	Std. Error	Sig.
White Tiger Oilfield	Dan Xay Bridge	-3.84127	10.00152	1.000
	Dua River	-5.53571	12.43924	1.000
	Can Gio C1	-1.84127	10.00152	1.000
	Can Gio C2	-5.41071	10.27136	1.000
	Can Gio C3	-2.91071	10.27136	1.000
	Downstream of Long Tau River	-2.61905	11.04138	1.000
	Downstream of Soai Rap River	.93651	10.00152	1.000
	Ganh Rai Gulf	1.63736	9.30402	1.000



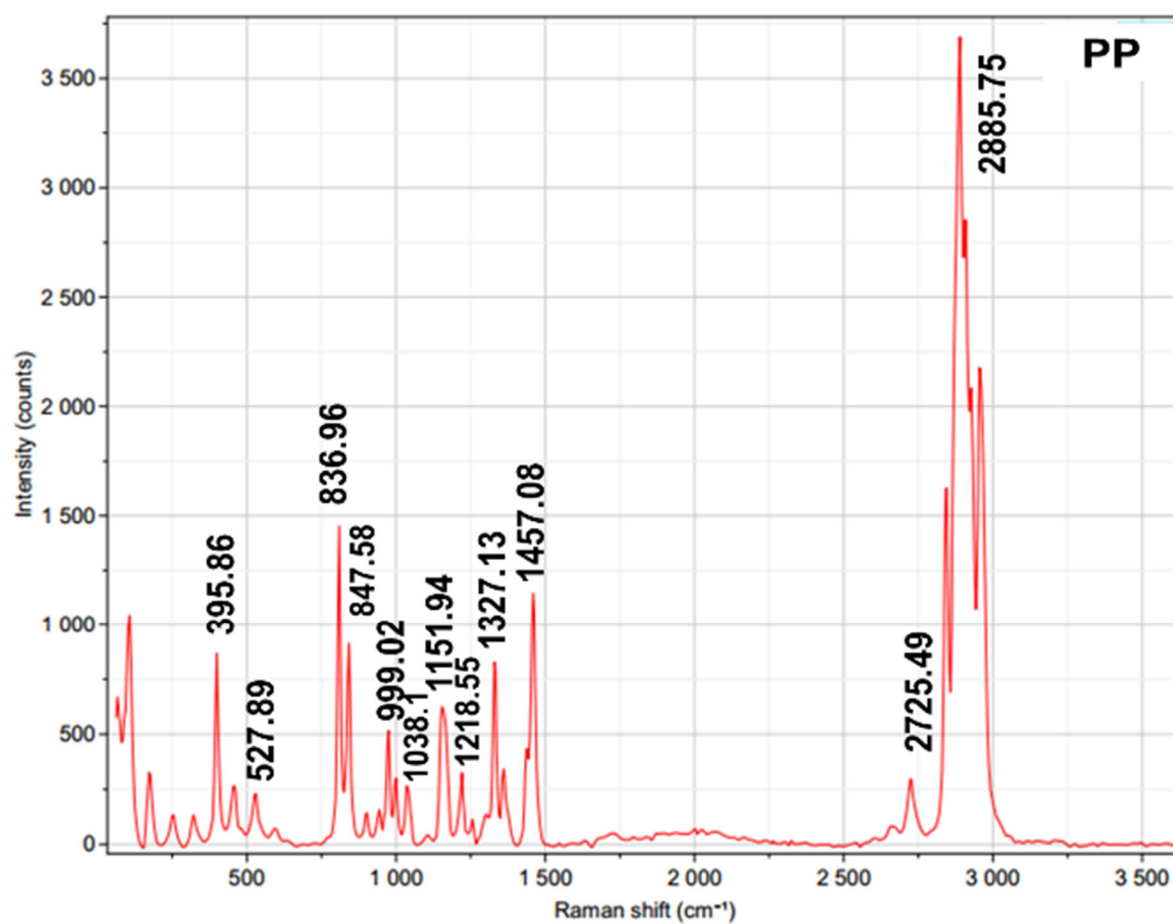


Figure S1. Raman spectra of PE, PP, PET, PVC, PS, PA and PMMA





Figure S2. Description of sampling locations and equipment

- a) Floating garbage collection Bridge No. 1; b) Floating debris collection activities along the canals;
c) Sampling along NL-TN by boat; d) Core Zone of Can Gio Biosphere; e) Sampling at Salt pan;
f) Can Gio Mangrove Biosphere Reserve; g) Oyster farming in Rach Lo Bridge (Can Gio); h) Ganh Rai Gulf
(East Sea); i) Sampling with bucket (also in (e)), and Wildco horizontal alpha water sampler*

Source: photos taken in the field trips of MSc. Vo Thi Kim Khuyen and research team from 2019 to 2022