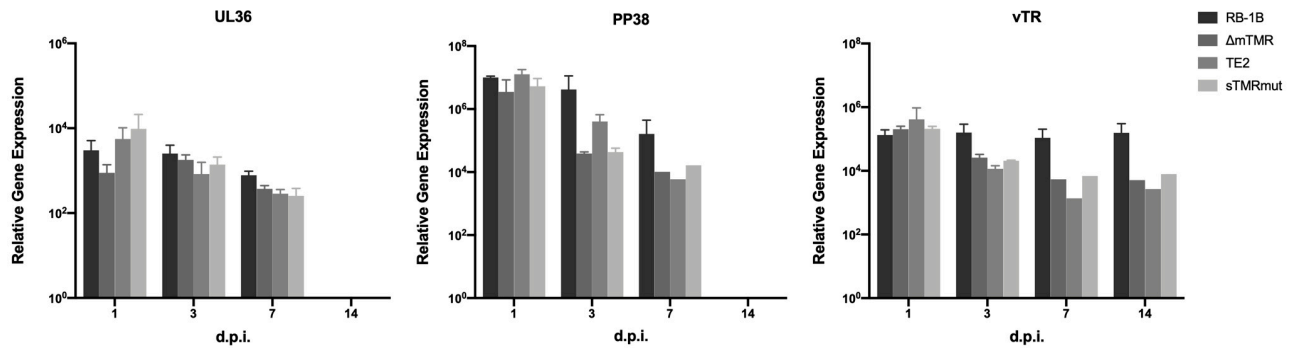


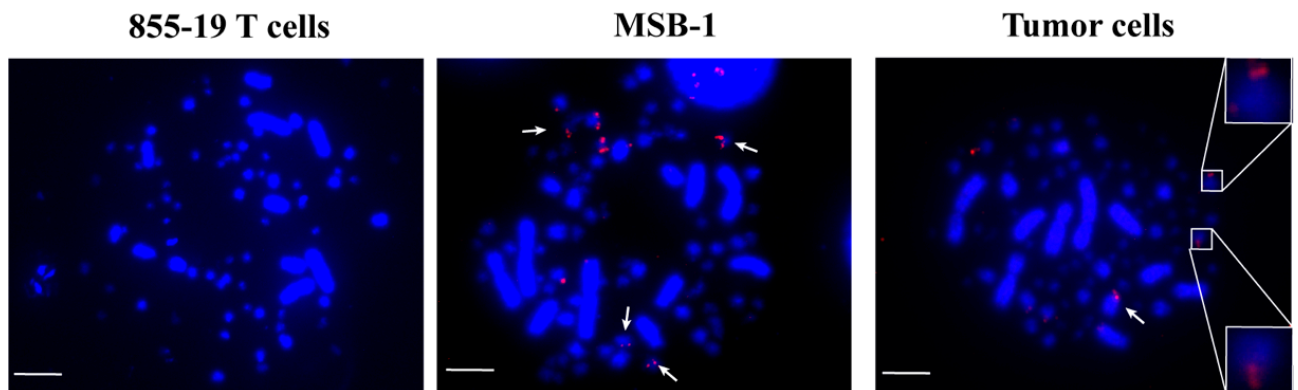
Supplementary Material for:

## A Cell Culture System to Investigate Marek's Disease Virus Integration into Host Chromosomes

by Y. You et al.



**Figure S1:** Determination of viral gene expression levels. Viral gene expression levels in 855-19 T cells for the early gene UL36, the late gene PP38, and the latent gene vTR were measured by RT-qPCR and normalized to the expression levels of GAPDH (n=3).



**Figure S2:** MDV integration in the MDV tumor cell line MSB-1 and in primary MDV tumor cells. Representative metaphase chromosomes (DAPI stain, blue) are shown along with the presence and location of integrated MDV (Cy3 streptavidin, red) in MSB-1 cell lines and MDV-induced tumor cells. Uninfected 855-19 T cells served as negative controls. Scale bars correspond to 10  $\mu m$ .