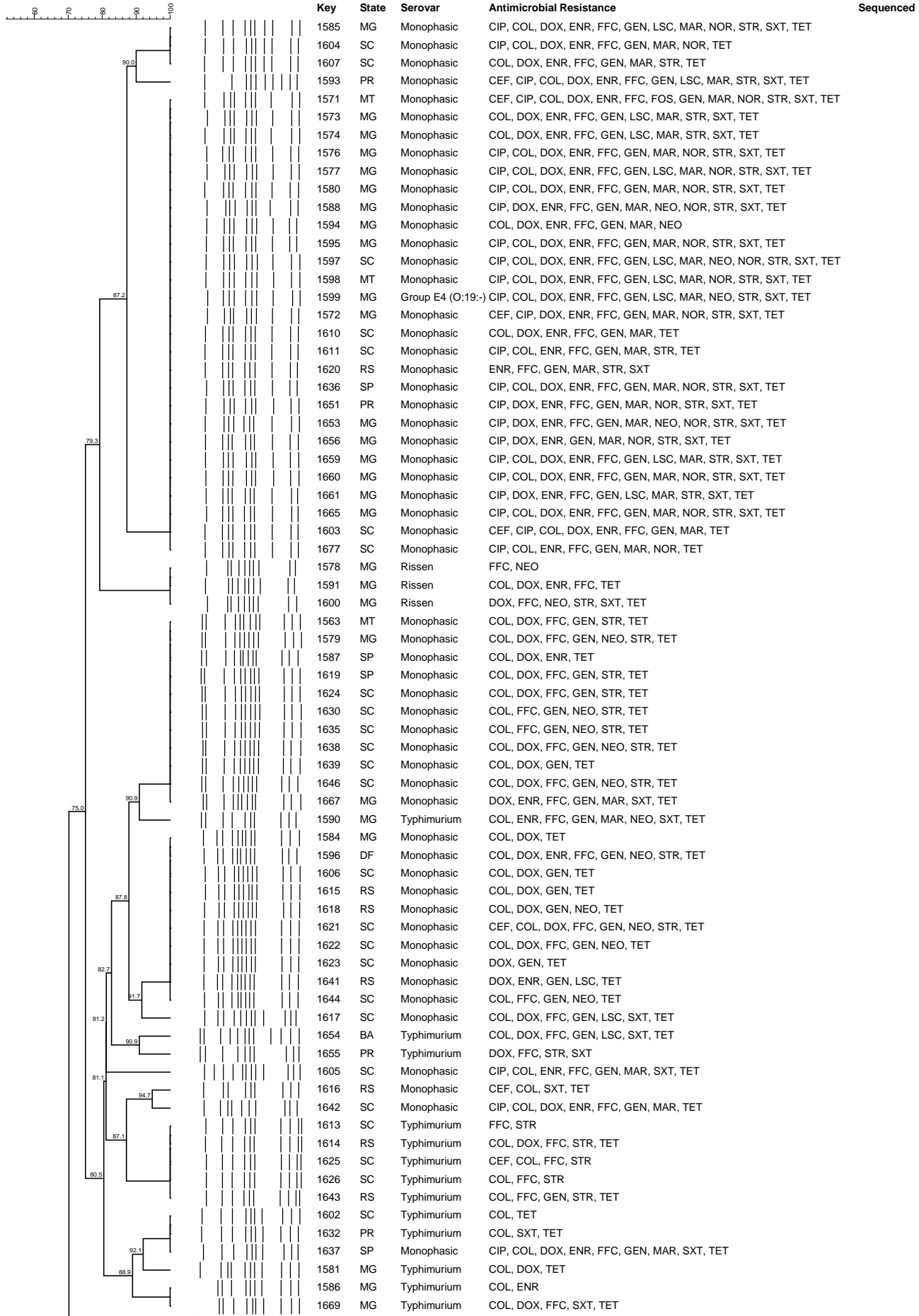
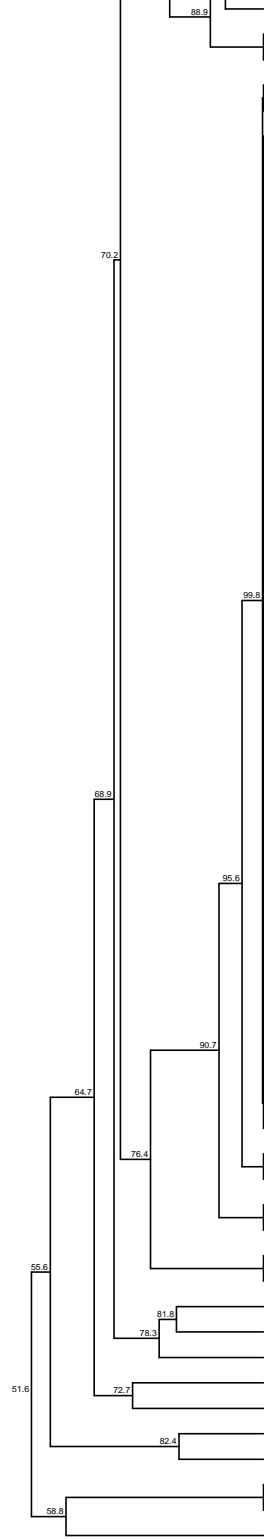


**Dendrogram of 130 *Salmonella* isolates according to pulsotype, outbreak location, serovar antimicrobial resistance profile**





1581	MG	Typhimurium	COL, DOX, TET	
1586	MG	Typhimurium	COL, ENR	
1669	MG	Typhimurium	COL, DOX, FFC, SXT, TET	
1561	MG	Choleraesuis	COL, DOX, FFC, GEN, LSC, STR, TET	X
1566	MG	Choleraesuis	DOX, FFX, GEN, MAR, NEO, STR, TET	
1544	MG	Choleraesuis	DOX, FFC, GEN, STR, TET	
1548	PR	Choleraesuis	DOX, FFC, GEN, STR, TET	
1549	PR	Choleraesuis	DOX, FFC, GEN, STR, TET	
1551	PR	Choleraesuis	DOX, FFC, GEN, TET	
1554	MG	Choleraesuis	DOX, FFC, GEN, STR, TET	
1547	SP	Choleraesuis	DOX, ENR, FFC, GEN, STR, TET	
1556	SP	Choleraesuis	DOX, FFC, GEN, STR, TET	X
1557	SP	Choleraesuis	COL, DOX, FFC, GEN, STR, TET	
1558	MG	Choleraesuis	DOX, FFC, GEN, STR, TET	
1559	MG	Choleraesuis	FFC, GEN, STR, TET	
1560	MG	Choleraesuis	DOX, FFC, GEN, STR, TET	
1550	PR	Choleraesuis	DOX, FFC, GEN, STR, TET	X
1567	MG	Choleraesuis	DOX, FFC, GEN, STR, TET	
1553	SP	Choleraesuis	DOX, FFC, GEN, STR, TET	
1570	MG	Choleraesuis	DOX, ENR, FFC, GEN, STR, TET	
1555	SP	Choleraesuis	DOX, ENR, FFC, GEN, STR, TET	
1575	MG	Choleraesuis	DOX, ENR, FFC, GEN, STR, TET	
1583	GO	Choleraesuis	COL, DOX, ENR, FOS, GEN, MAR, STR, TET	X
1552	SP	Choleraesuis	COL, DOX, FFC, GEN, STR, TET	
1543	MG	Choleraesuis	DOX, FFC, GEN, STR, TET	
1601	RS	Choleraesuis	DOX, FFC, GEN, STR, TET	
1608	SC	Choleraesuis	COL, DOX, TET	
1612	PR	Choleraesuis	COL, FFC, STR, TET	
1627	SC	Choleraesuis	COL, DOX, FFC, GEN, TET	
1628	PR	Choleraesuis	TET	
1631	RS	Choleraesuis	ENR, FFC, GEN, STR	X
1633	SC	Choleraesuis	COL, DOX, GEN, FFC, STR, TET	X
1649	MG	Choleraesuis	COL, DOX, FFC, TET	
1650	PR	Choleraesuis	DOX, FFC, GEN, TET	
1657	MG	Choleraesuis	DOX, FFC, GEN, TET	
1658	MG	Choleraesuis	DOX, FFC, TET	
1673	SC	Choleraesuis	DOX, STR, TET	
1674	SC	Choleraesuis	DOX, GEN, STR, TET	
1675	RS	Choleraesuis	DOX, FFC, GEN, STR, TET	
1676	RS	Choleraesuis	DOX, FFC, GEN, STR, TET	
1565	SC	Choleraesuis	COL, DOX, ENR, FOS, GEN, MAR, STR, TET	
1542	MG	Choleraesuis	DOX, ENR, FFC, GEN, MAR, STR, TET	
1568	MG	Choleraesuis	DOX, ENR, FFC, GEN, NEO, STR, TET	
1647	MG	Choleraesuis	COL, DOX, ENR, FFC, STR, TET	
1640	SC	Choleraesuis	COL, DOX, FFX, GEN, STR, TET	
1546	NI	Choleraesuis	DOX, ENR, FFC, GEN, STR, TET	
1672	SC	Choleraesuis	DOX, NEO	
1545	NI	Choleraesuis	COL, DOX, ENR, FFC, GEN, STR, TET	
1541	NI	Choleraesuis	ENR, NEO	
1652	SP	London	DOX, FFC, GEN, SXT, TET	
1662	MG	London	COL, ENR, FFC, GEN, LSC, STR, SXT, TET	
1634	SC	Anatum	COL, GEN, STR, TET	
1666	MS	Infantis	COL, FFC, TET	
1582	MG	Derby	COL, NEO, TET	
1589	MG	Group D	COL, DOX, TET	
1668	PR	Newport	NONE	
1569	MG	Monophasic	COL, DOX, FFC, SXT, TET	
1592	NI	Bovinsmorbificans	COL	
1564	MG	Panama	COL, DOX, FFC, GEN, LSC, STR, TET	
1664	MG	Panama	COL, DOX, FFC, TET	
1648	MG	Oslo	CEF, COL, ENR, FFC, NEO	