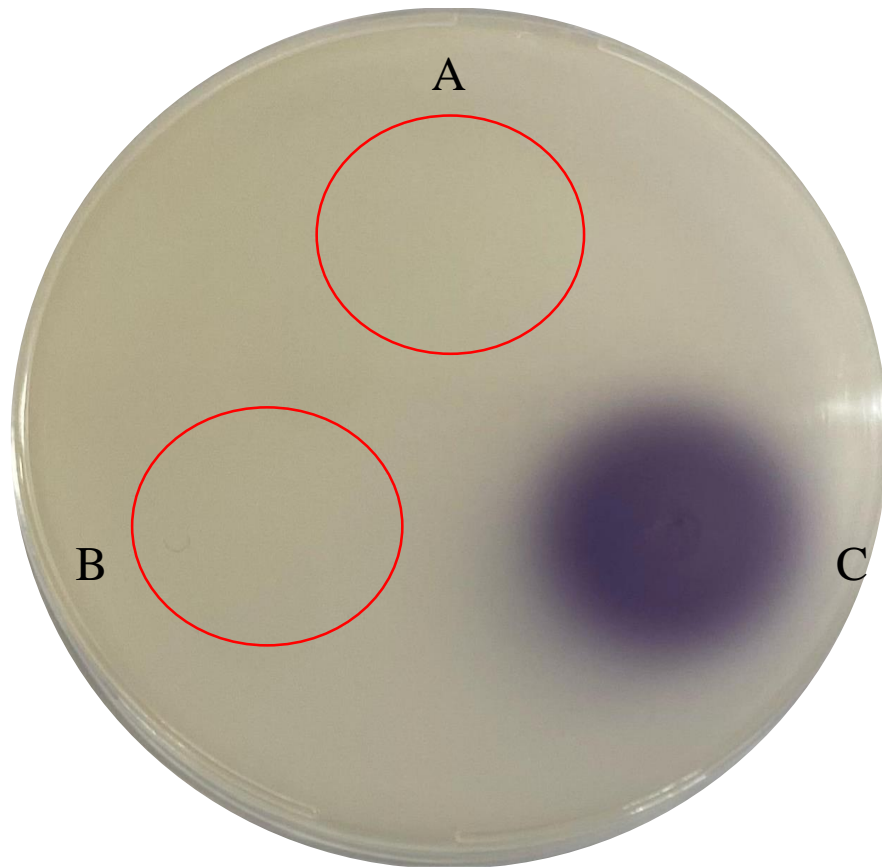
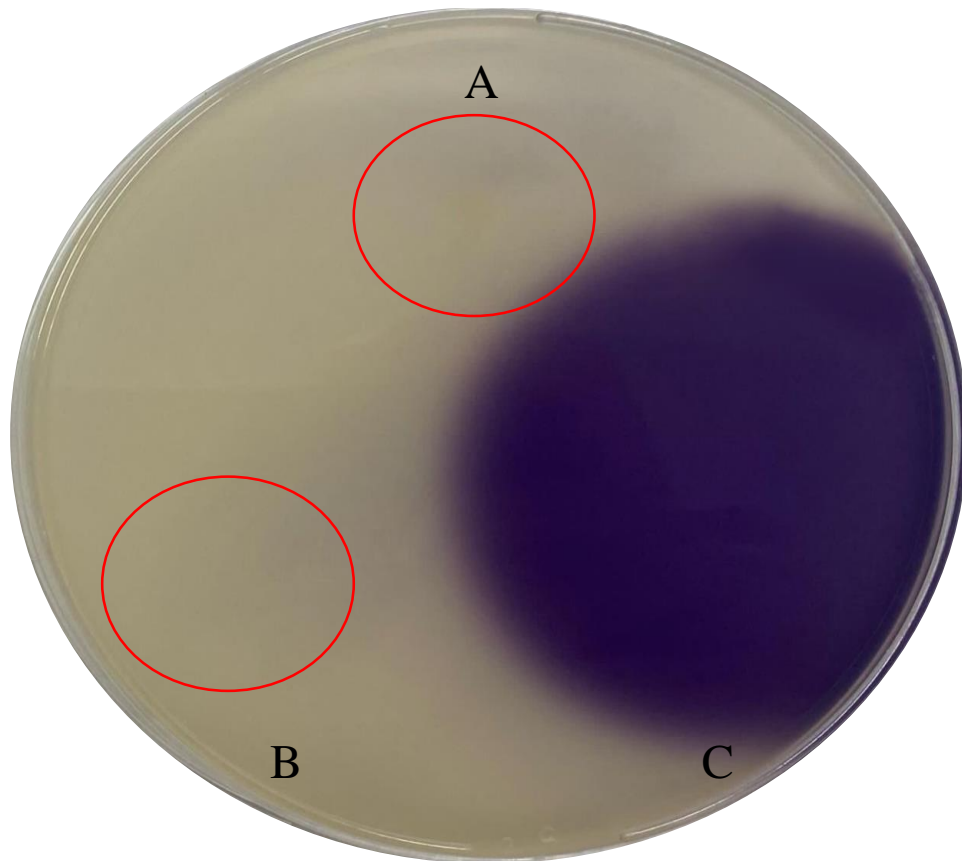


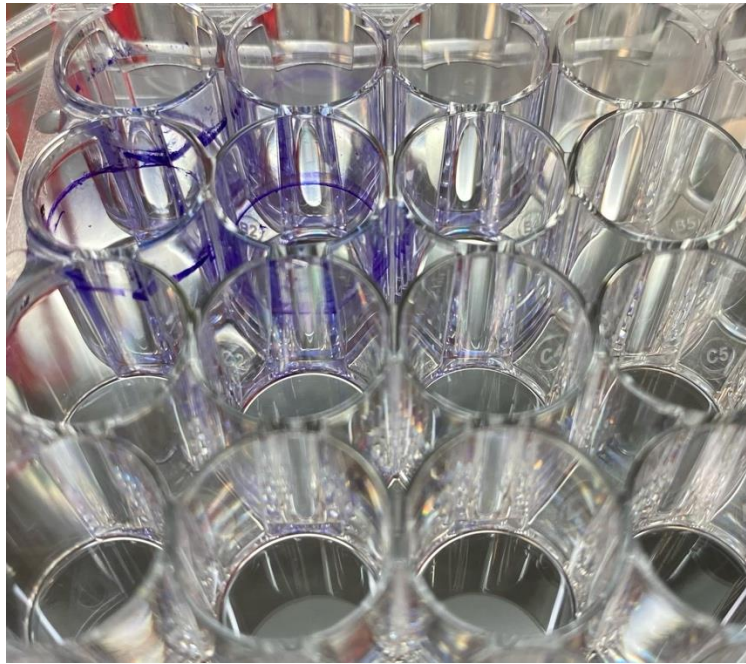
Supplementary Figure S1. Any interference by *Bacillus velezensis* D-18 Extracellular Products (ECPs) on violacein production by *C. violaceum* CV026. A. ECPs. B. Heat-inactivated ECPs. C. C6AHL (1ug/uL)



Supplementary Figure S2. Any interference by *Bacillus velezensis* D-18 Extracellular Products (ECPs) on violacein production by *C. violaceum* VIR24. A. ECPs. B. Heat-inactivated ECPs. C. C6AHL (1ug/uL)



Supplementary Figure S3. Assay for the demonstration of the presence of QS signaling molecules by *Vibrio anguillarum* 507. The biomarker *C. violaceum* CV026, embedded in 0.4% soft LB agar, produces violacein pigment upon detecting short-chains AHL molecules. A) *Vibrio anguillarum* 507. B) PBS. C) C6AHL (1ug/uL).



Supplementary Figure S4. *Bacillus velezensis* D-18 and *Vibrio anguillarum* 507 biofilms stained with 0.1% Crystal Violet (CV).