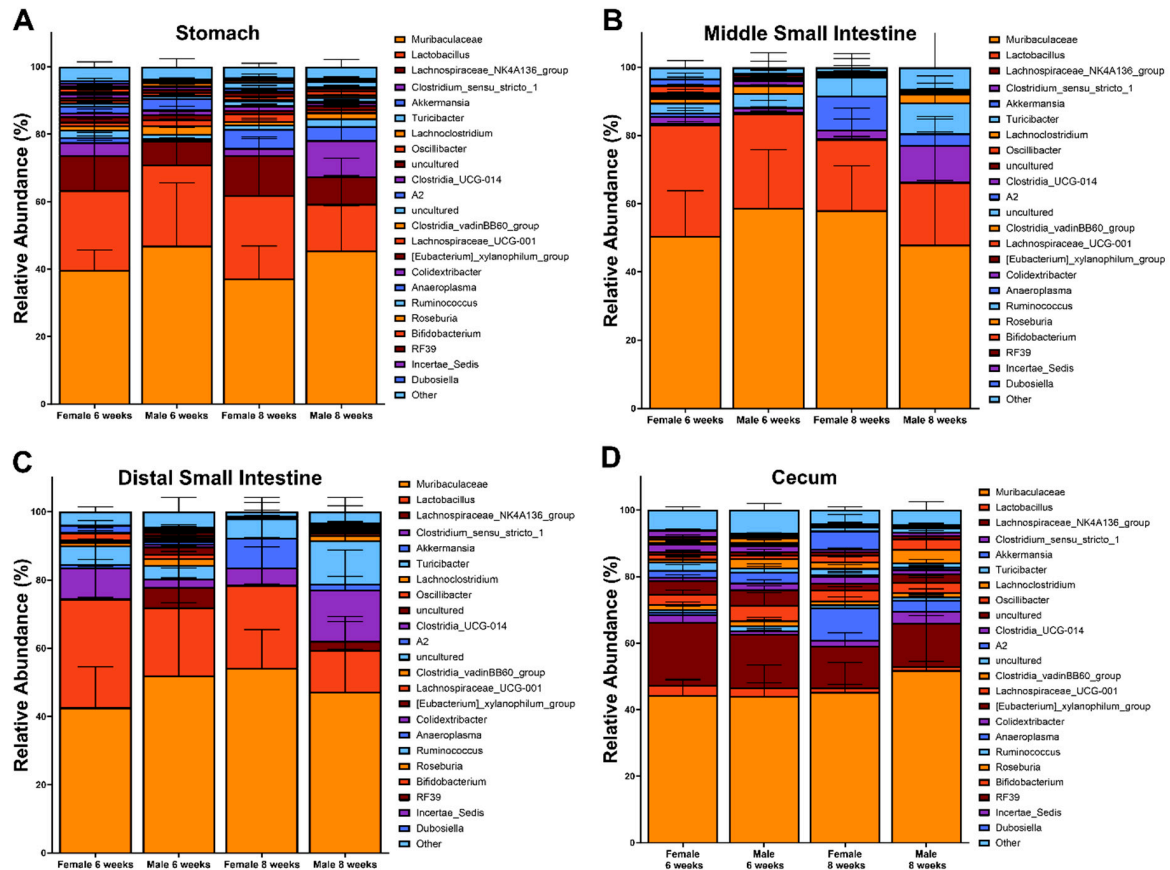
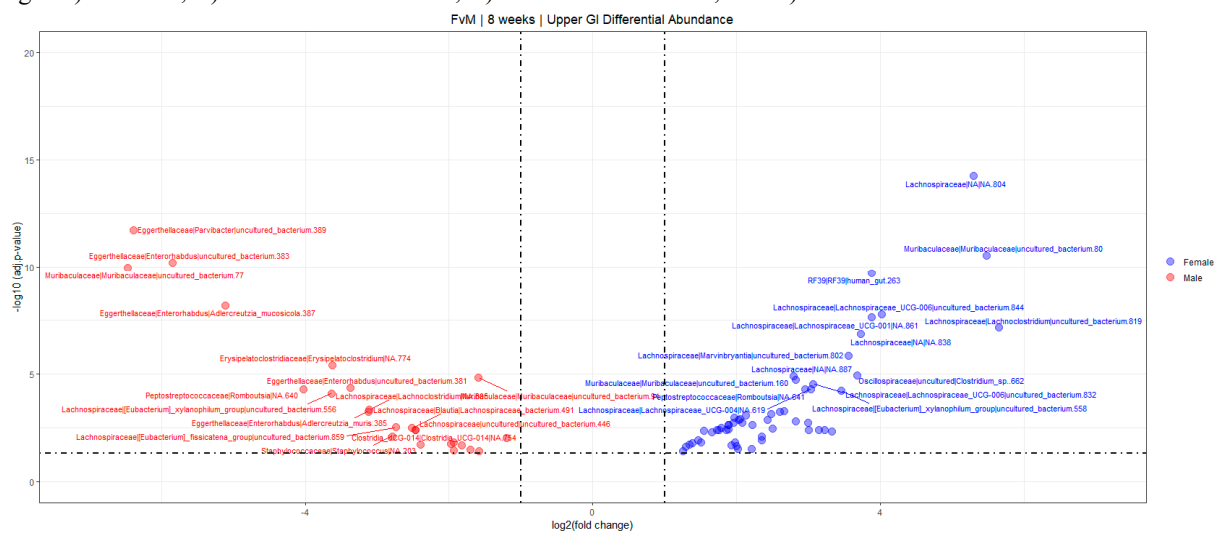


Supplementary Figures



Supplementary Figure S1: Relative abundance plots per GI region for female and male mice at 6 and 8 weeks of age. A) Stomach, B) middle small intestine, C) distal small intestine, and D) cecum.



Supplementary Figure S2: Differential abundance DESeq2 plot between female and male mice in the upper GI at 8 weeks of age.