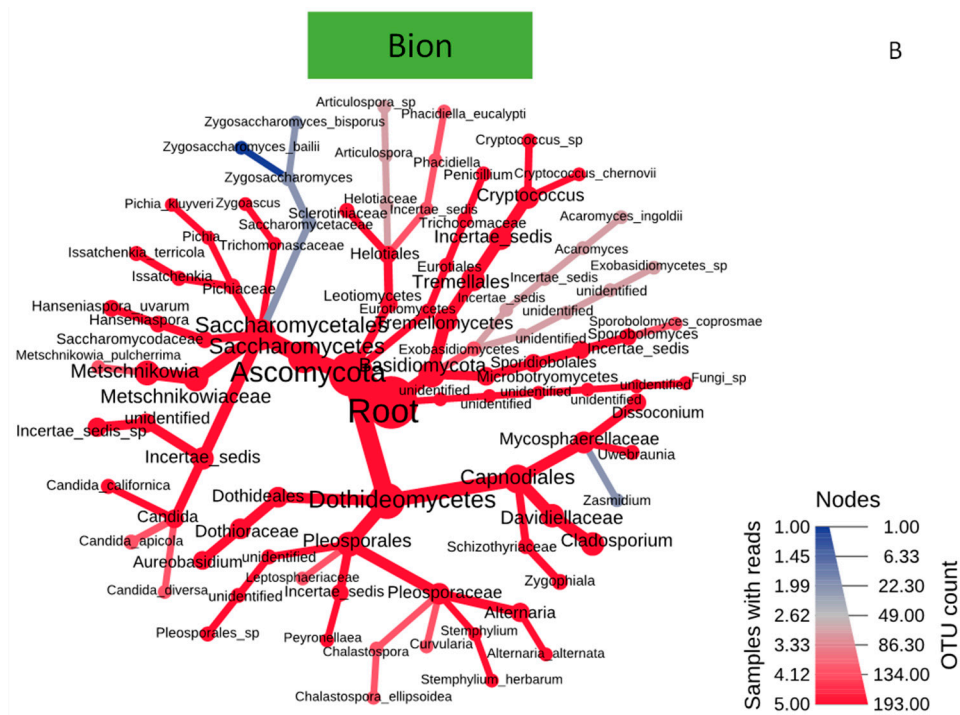
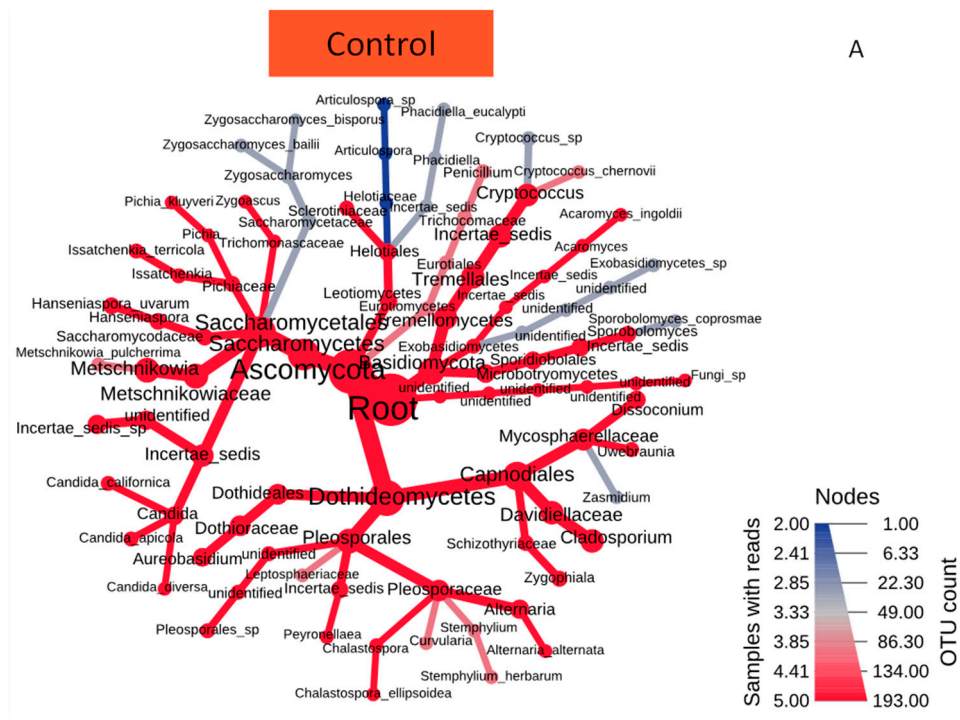


Table S1. Alpha biodiversity data. Recorded data of the alpha biodiversity in terms of number of observed species, Shannon's and Simpson's index, as output from MicrobiomeAnalyst. In bold type are highlighted the median values.

Thesis	sample	Species Observed (p = 0,049894)	Shannon's Index (p = 0,73345)	Simpson's Index (p = 0,56553)
Control (C)	R3P18C	65	1,14	0,558
	R5P8C	79	1,41	0,637
	R6P11C	93	1,67	0,646
	R7P13C	84	1,45	0,606
	R8P1C	63	1,05	0,503
Bion (B)	R9P3B	83	1,11	0,455
	R9P11B	86	1,59	0,618
	R10P6B	94	1,30	0,543
	R10P16B	69	1,61	0,699
	R11P7B	75	1,53	0,713
Water (W)	R13P6W	57	1,41	0,696
	R13P13W	51	1,44	0,667
	R13P23W	60	1,49	0,688
	R14P9W	83	1,51	0,604
	R14P17W	62	1,39	0,586



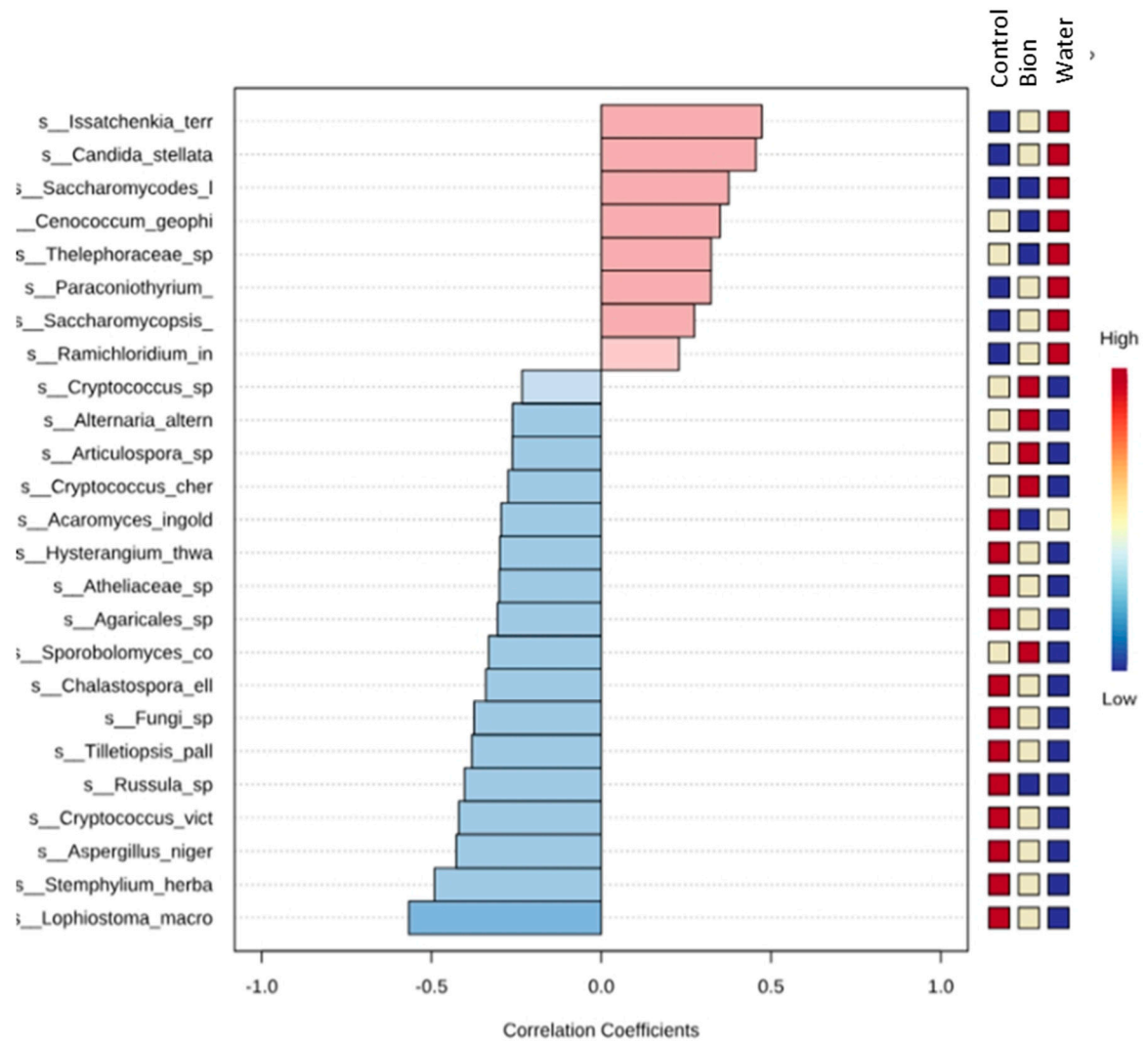
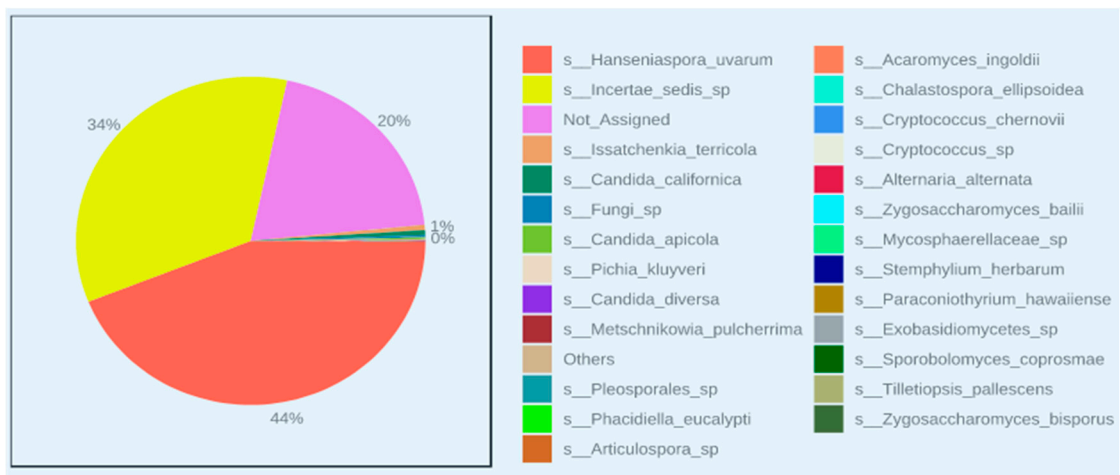
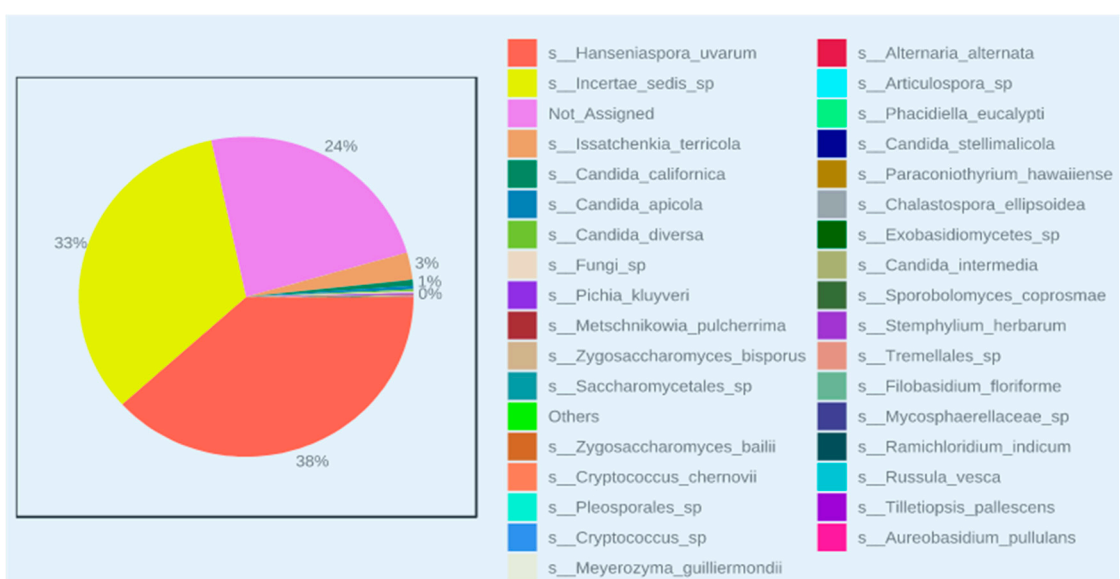


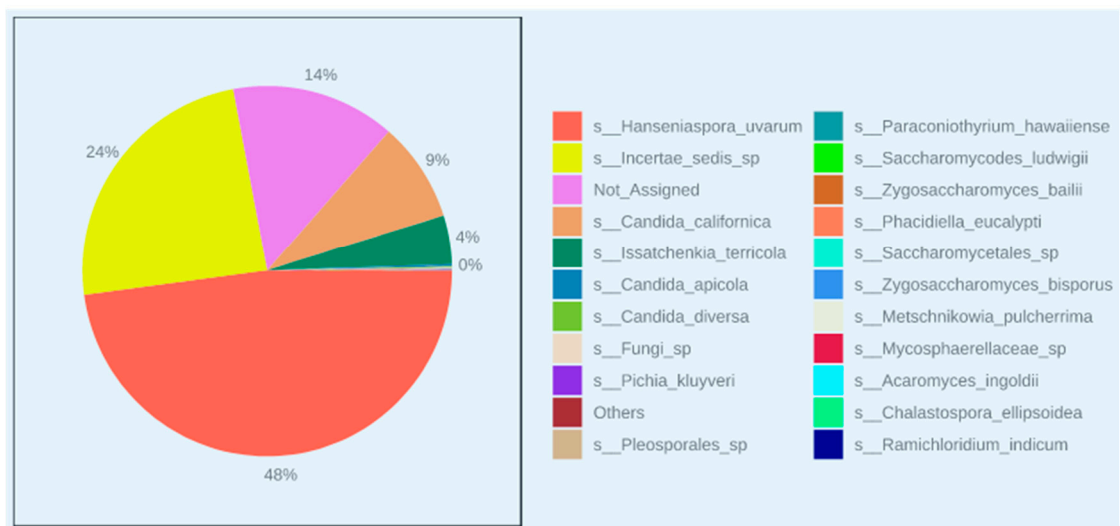
Figure S2. Correlation coefficients. Top 25 OTUs have been correlated with the three treatments.



Control



Bion



Water

Figure S3. Pie-Chart of relative abundance at species level. Relative abundance in percentage of the species detected in each thesis.