

## Supplementary Material

### Microorganisms

# Codon Usage Bias Analysis in Macronuclear Genomes of Ciliated Protozoa

Yu Fu <sup>1</sup>, Fasheng Liang <sup>1</sup>, Congjun Li <sup>1</sup>, Alan Warren <sup>2</sup>, Mann Kyoong Shin <sup>3</sup> and Lifang Li <sup>1,\*</sup>

<sup>1</sup> Laboratory of Marine Protozoan Biodiversity and Evolution, Marine College, Shandong University, Weihai 264209, China; fy\_sdu@163.com (Y.F.); lfsdante@163.com (F.L.); licongjun123june@163.com (C.L.)

<sup>2</sup> Department of Life Sciences, Natural History Museum, London SW7 5BD, UK; a.warren@nhm.ac.uk

<sup>3</sup> Department of Biology, University of Ulsan, Ulsan 44610, Republic of Korea; mkshin@ulsan.ac.kr

\* Correspondence: qd\_liliy@sina.com or lifangli@sdu.edu.cn

## **Supplementary Tables**

**Table S1.** GenBank accession numbers of the 21 ciliate species.

**Table S2.** The correlation analysis of the 21 ciliate species.

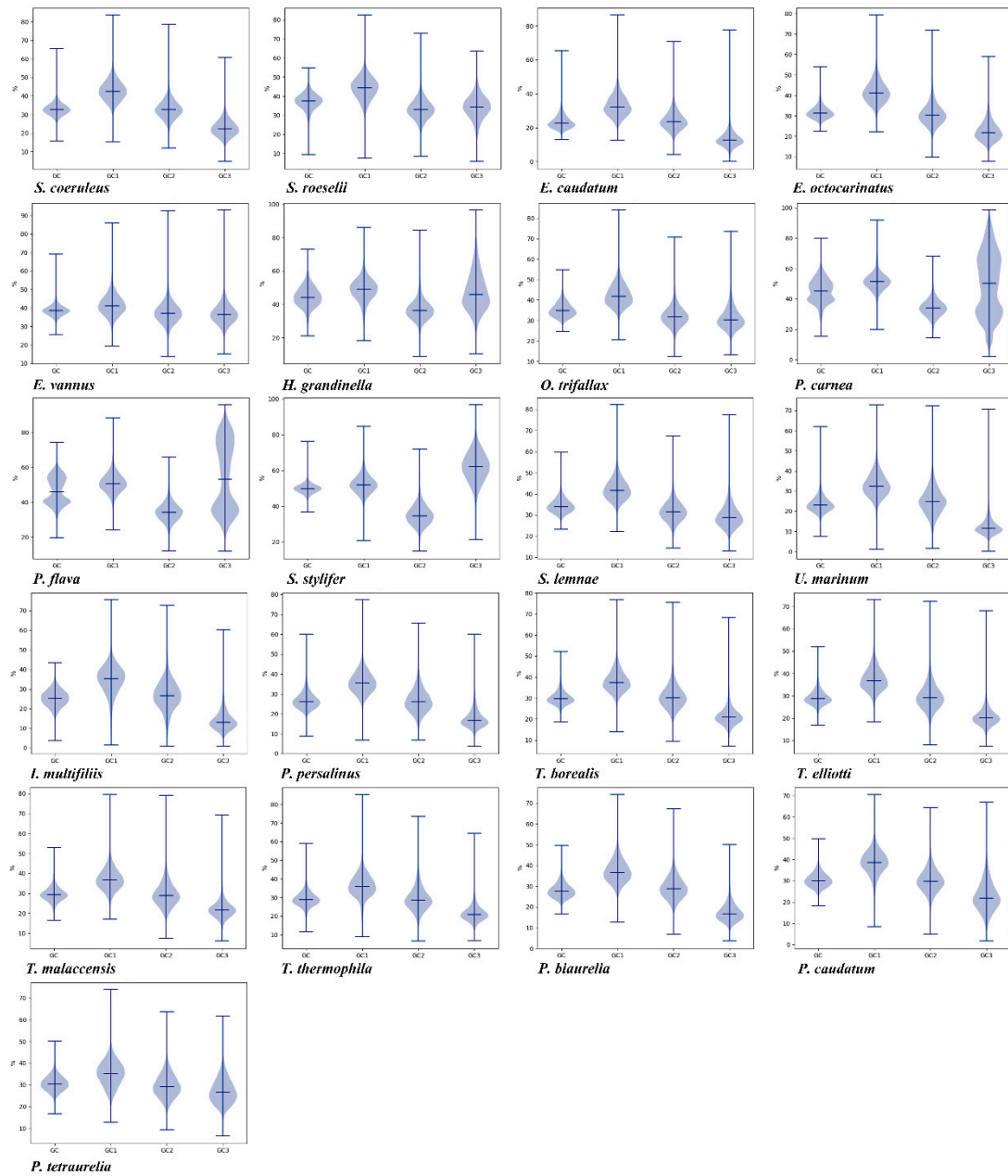
**Table S3.** The ENc radio of the 21 ciliate species.

**Table S4.** The RSCU value of the 21 ciliate species.

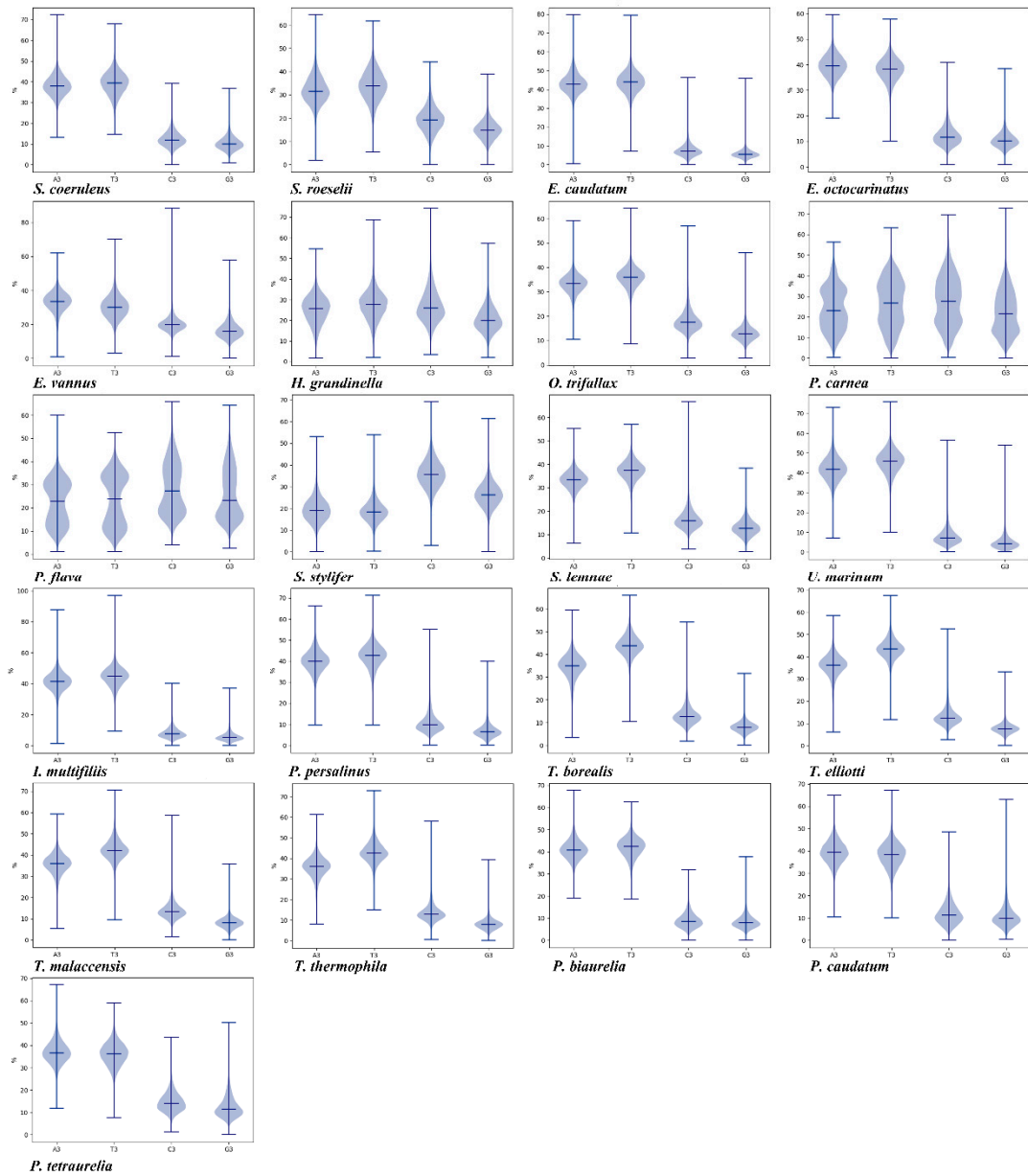
**Table S5.** The putative optimal codons of the 21 ciliate species.

**Table S6.** The third position codon bias of the 21 ciliate species.

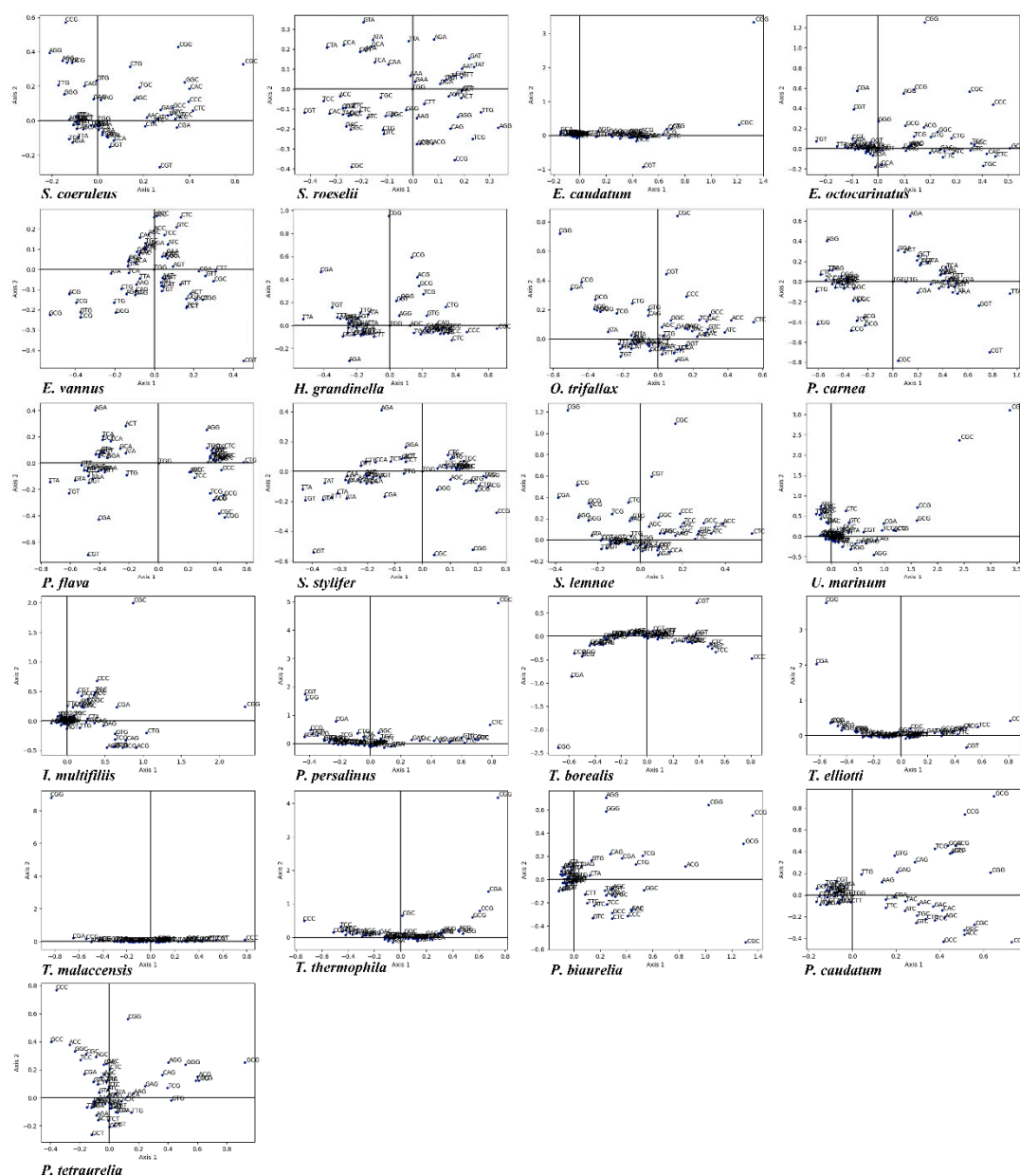
## Supplementary Figures



**Supplementary Figure S1.** Normal box plots for the range of GC, GC1, GC2, and GC3 content in the 21 ciliate species showing the probability density of data at different values.



**Supplementary Figure S2** Normal box plots for the range of A3, T3, C3 and, G3 content in the 21 ciliate species showing the probability density of data at different values.



**Supplementary Figure S3.** Codon correspondence analysis plot of each gene in the 21 ciliate species. Axis 1 and axis 2 represent the largest contributors to the CUB values of genes. The black dots represent the codons.