

Using SMART Magnetic Fluids and Gels for Prevention and Destruction of Bacterial Biofilms

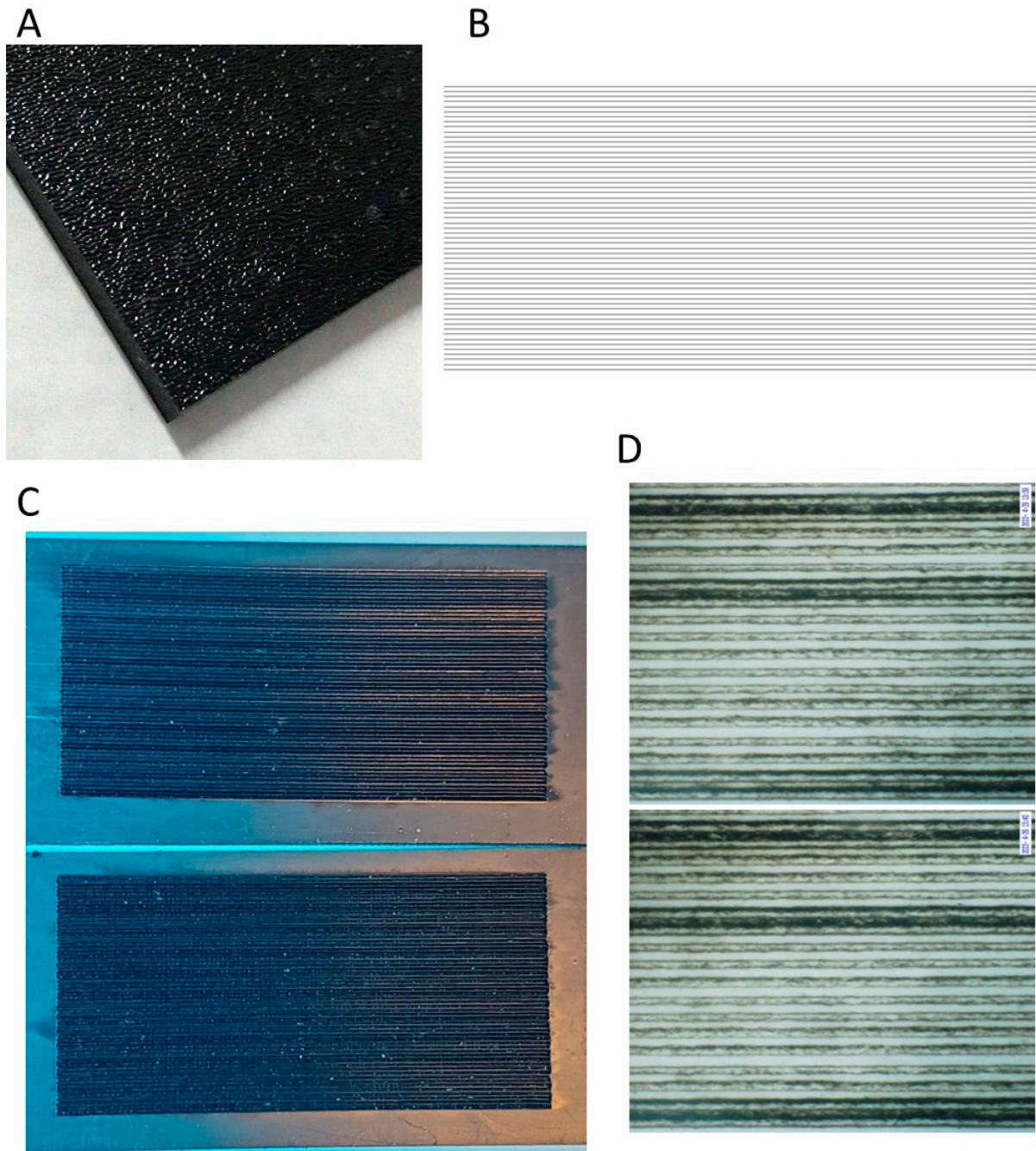


Fig. S1. Laser surface texturing of ABS plate. A) original single-side texture, B) grid file for texturing, C) engraved slides D) laser engraved surface.



Fig. S2. Ring of FF inside the culture tube.

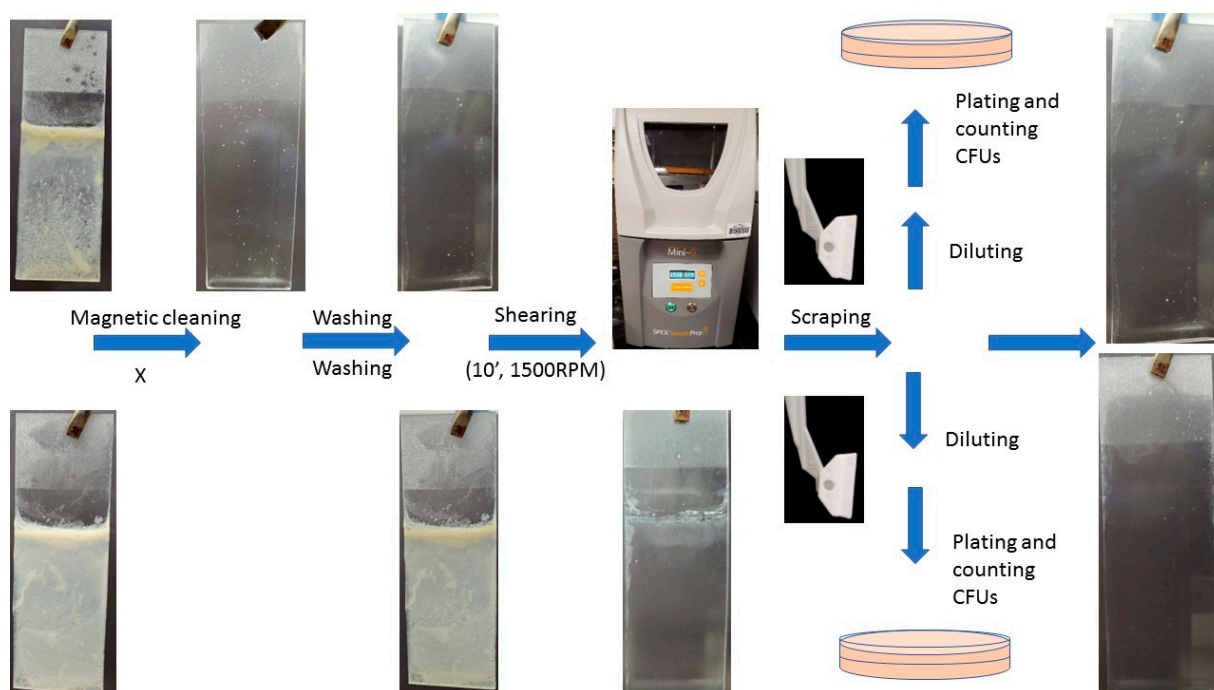


Fig. S3. Graphical representation of slide biofilm removal experiment with colony counting.

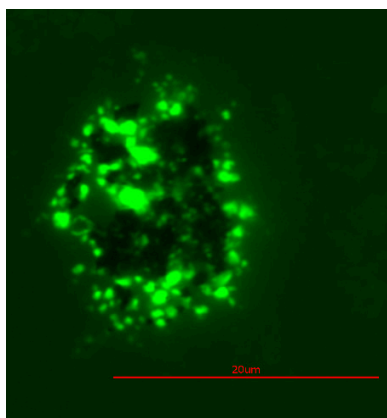


Fig. S4. Bacterial cells attached to the IO particles. Red bar scales represent 20 μm.

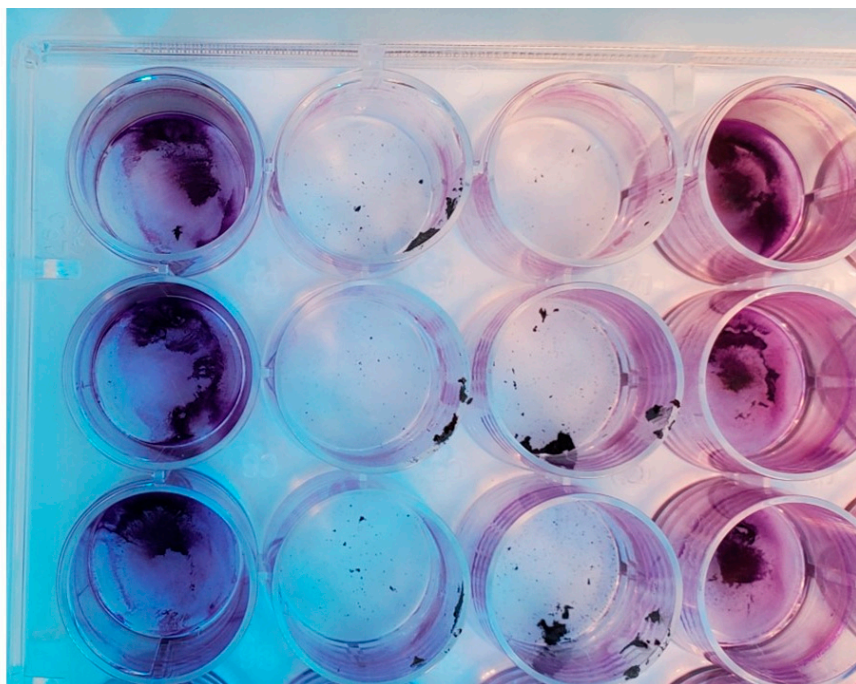


Fig. S5. Bacterial biofilm stained with CV attached to the bottom of a 24-well plate removed by SMARTFs. Rows: 1,4 not treated controls, 2-3 wells treated with MRFs and FG.