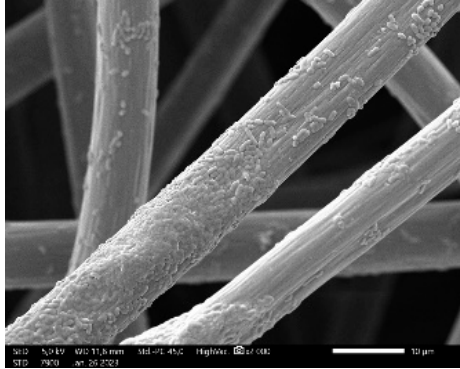


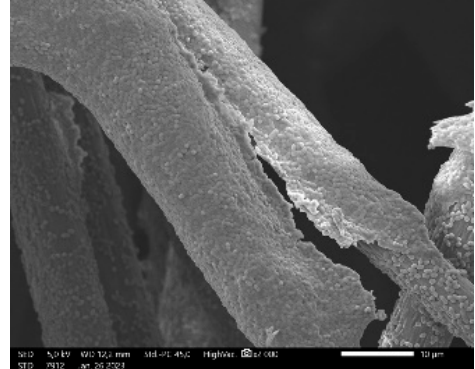
Supplementary Figure S1.

SEM images of the biofilm forming capacities of each mud isolate bacteria on the pretreated PXFT-35 carbon tissue on 23 °C after 3 days incubation.

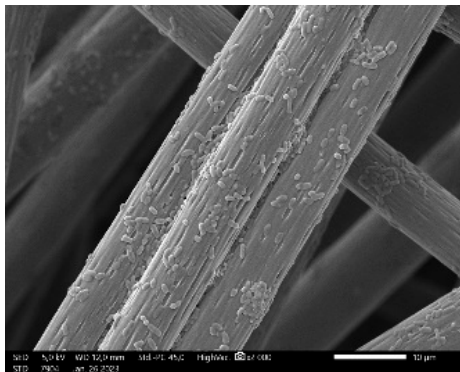
1. *Enterobacter koebel*



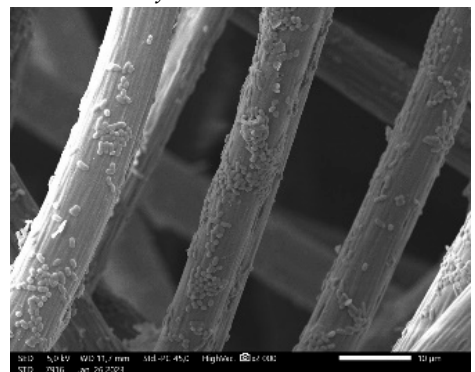
4. *Enterococcus faecalis*



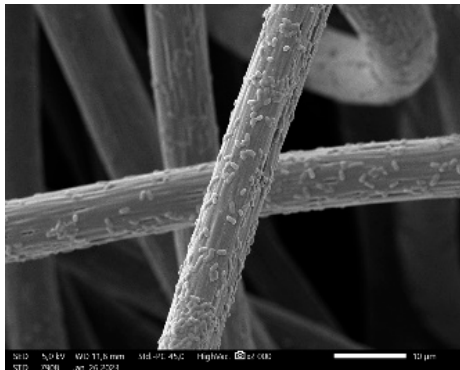
2. *Aeromonas salmonicida*



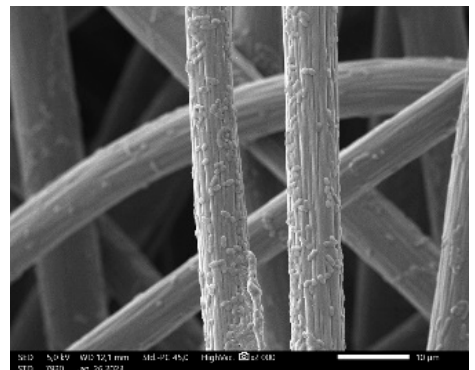
5. *Enterococcus faecalis*



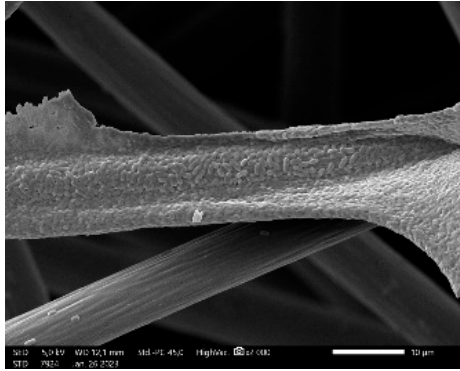
3. *Aeromonas salmonicida*



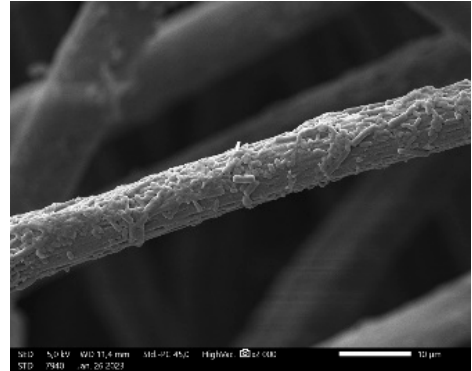
6. *Aeromonas salmonicida*



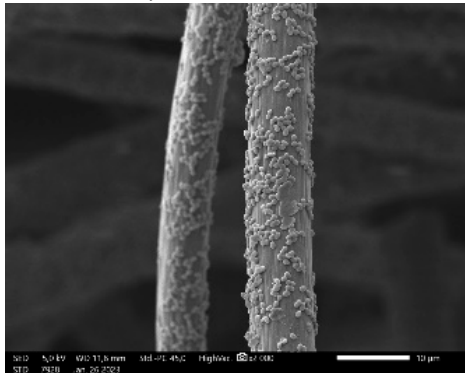
7. *Aeromonas hydrophila*



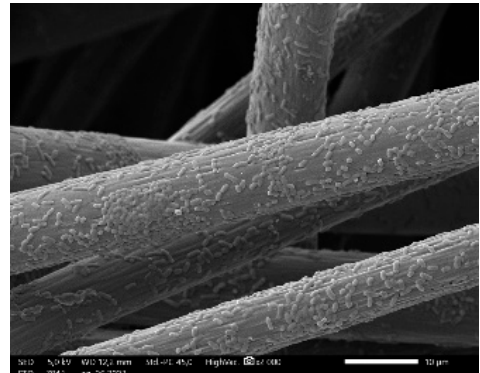
11. *Bacillus cereus*



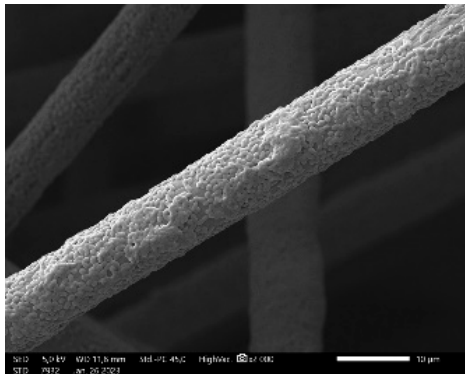
8. *Enterococcus faecalis*



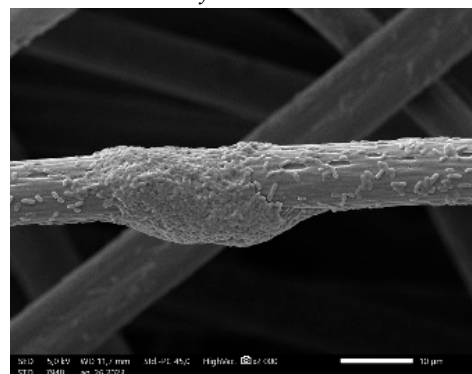
12. *Aeromonas salmonicida*



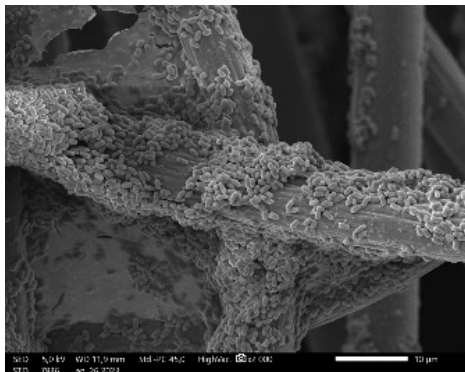
9. *unknown*



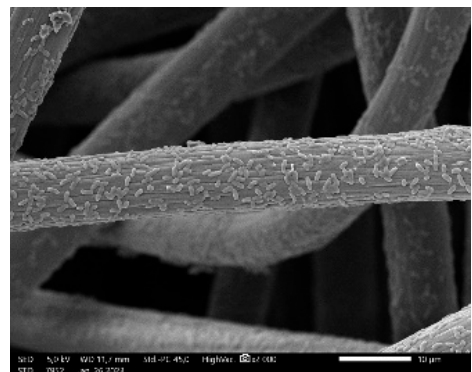
13. *Providencia alkalifaciens*



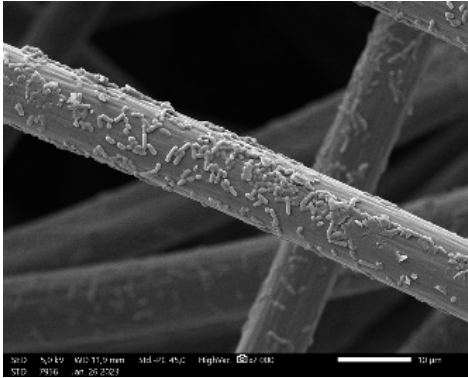
10. *unknown*



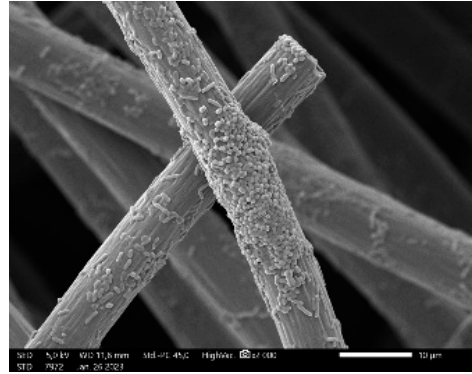
14. *Aeromonas salmonicida*



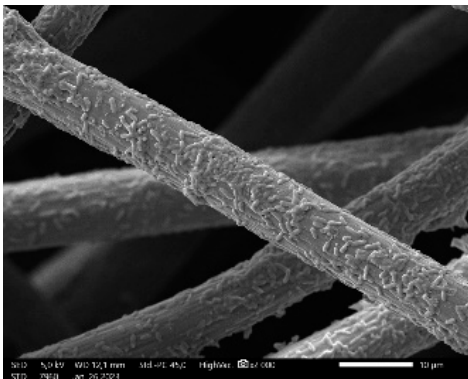
15. *Carnobacterium divergens*



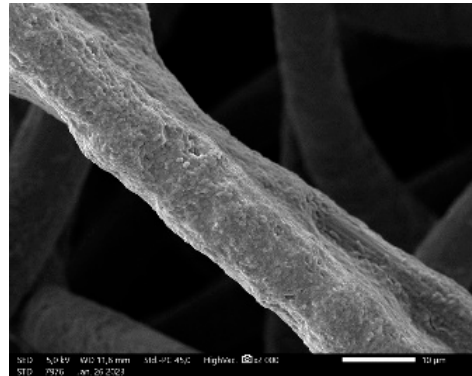
19. *Shewanella baltica*



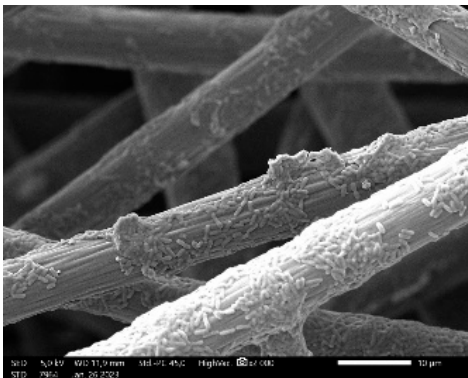
16. *Aeromonas ichthiosoma*



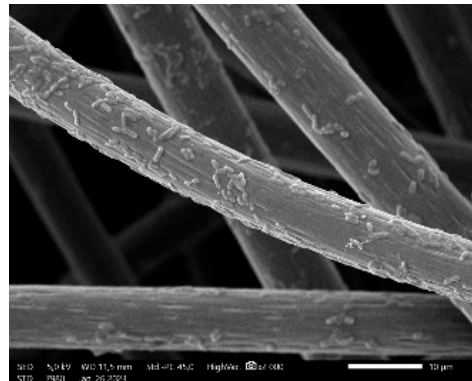
20. *Shewanella baltica*



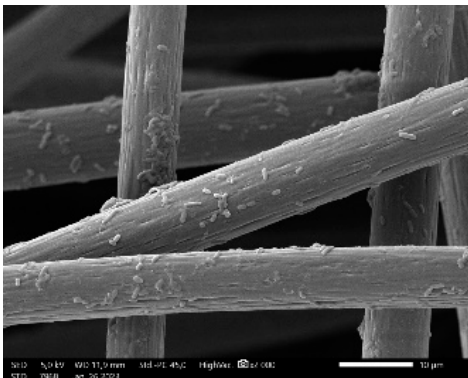
17. *Citrobacter braakii*



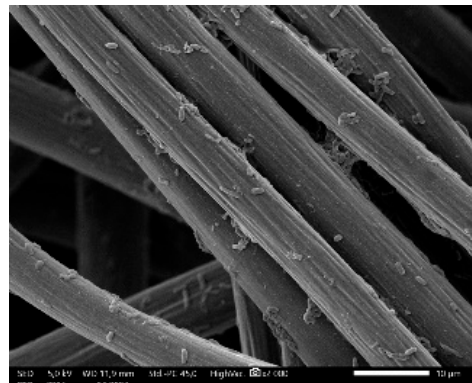
21. *Shewanella baltica*



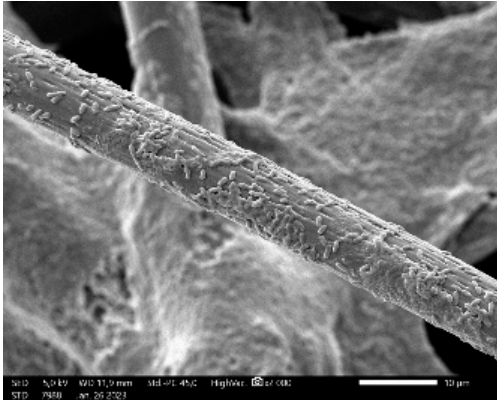
18. *Shewanella baltica*



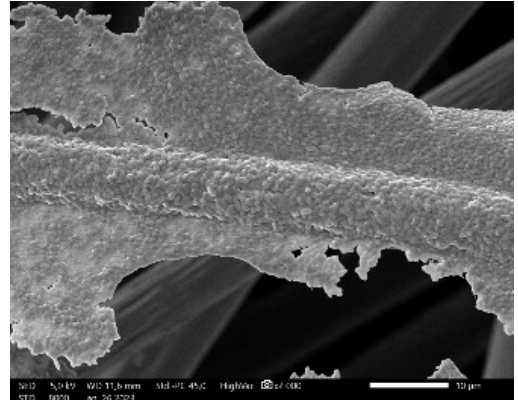
22. *Shewanella baltica*



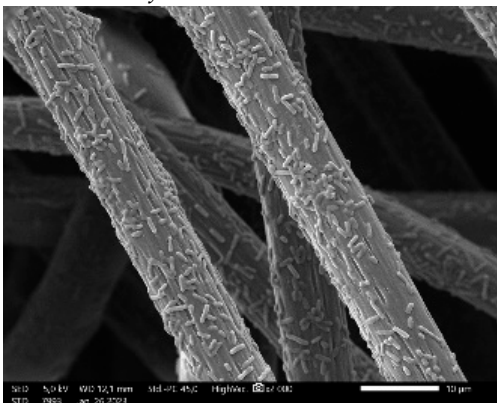
23. *Lelliotittia amnigena*



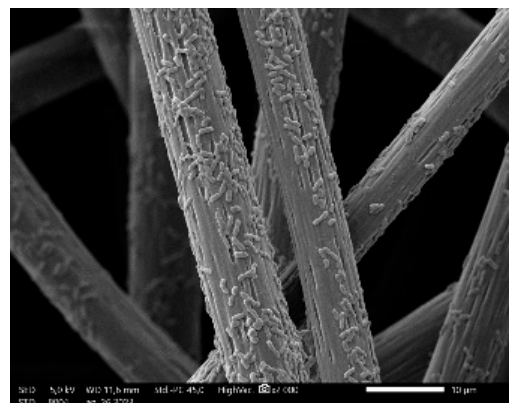
27. *Salmonella* sp.



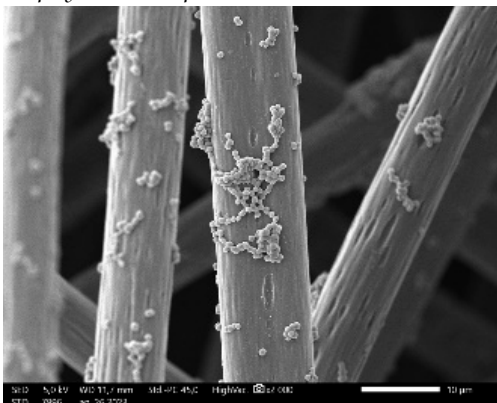
24. *Enterococcus faecium*



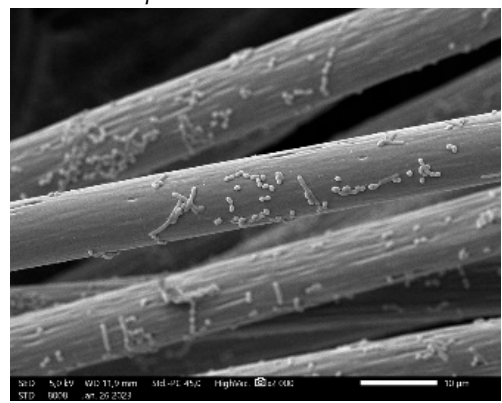
28. *Escherichia coli*



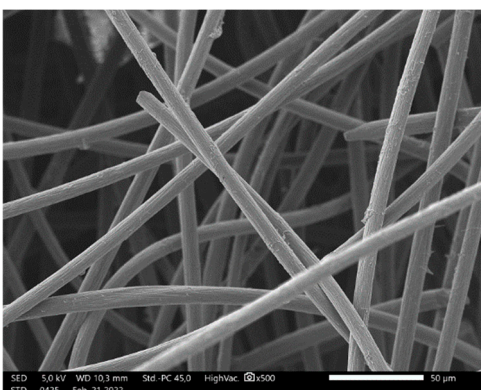
25. *Staphylococcus epidermidis*



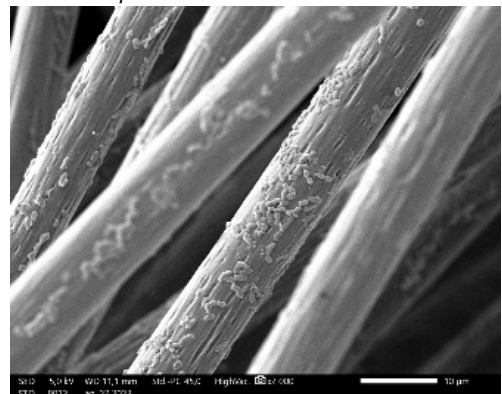
29. *Salmonella* sp.



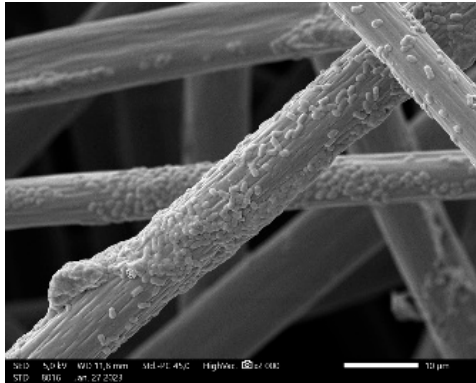
26. *Enterococcus hirae*



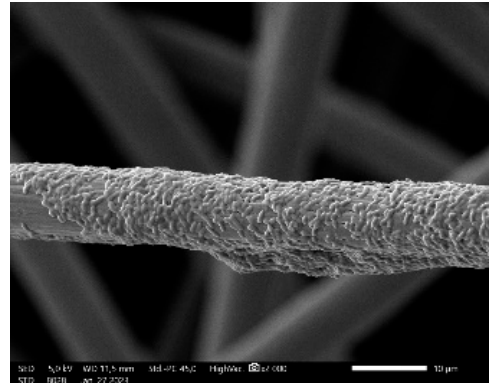
30. *Klebsiella pneumoniae*



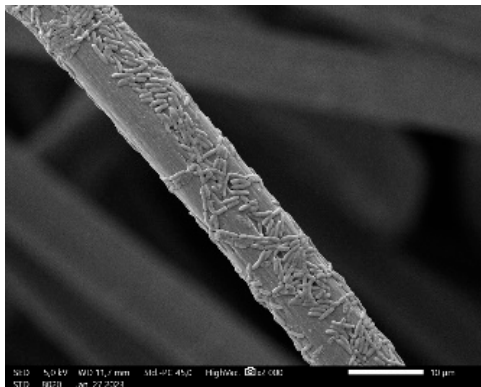
31. *unknown*



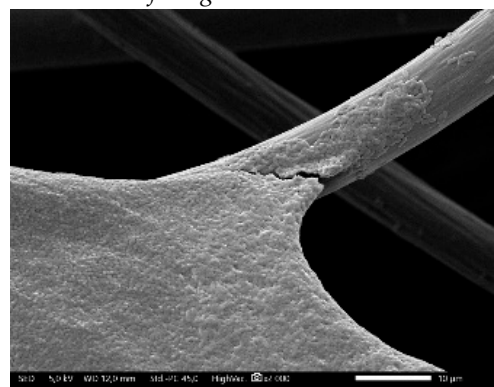
35. *Aeromonas veronii*



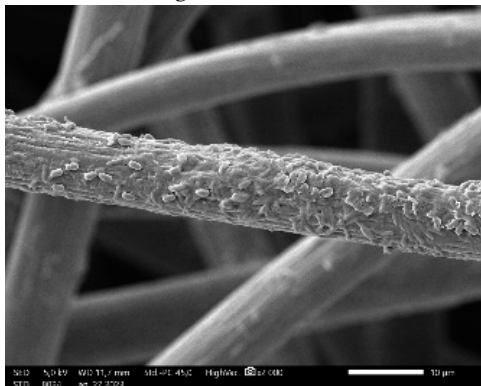
32. *unknown*



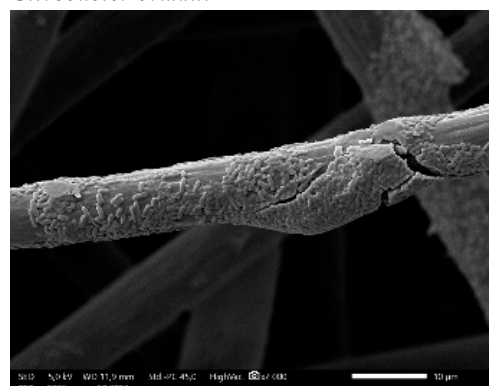
36. *Buttiauxella ferraguitiae*



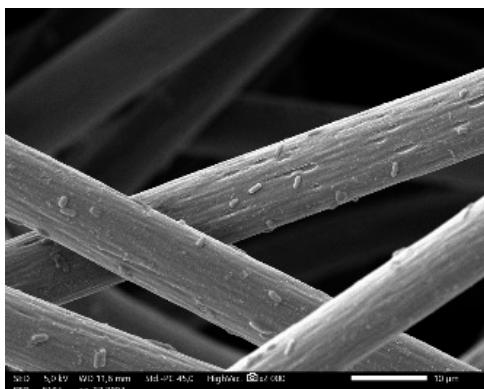
33. *Pleisomonas shigelloides*



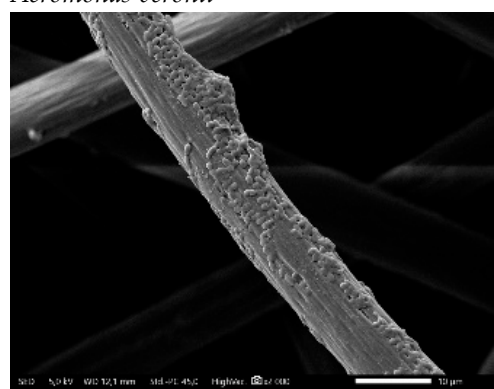
37. *Citrobacter brakkii*



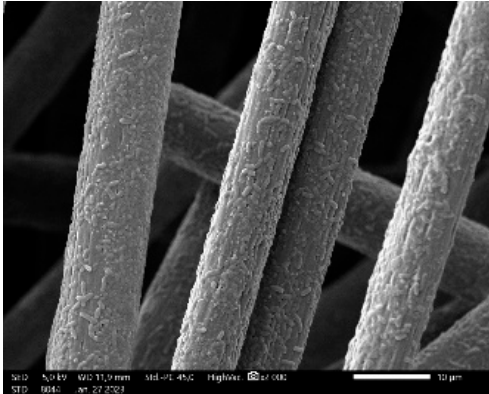
34. *Aeromonas ichtiosmia*



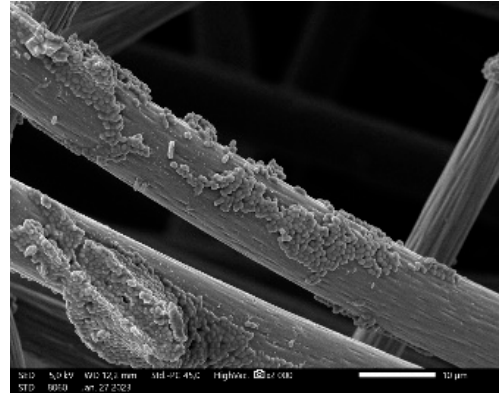
38. *Aeromonas veronii*



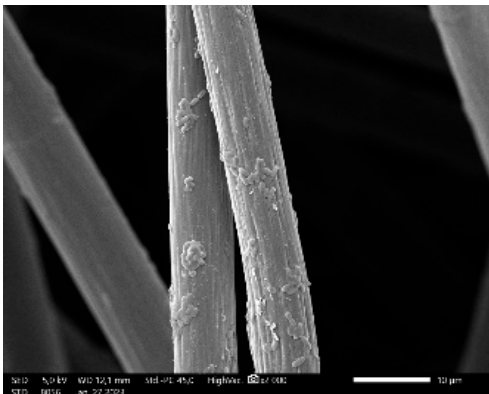
39. *Enterococcus faecium*



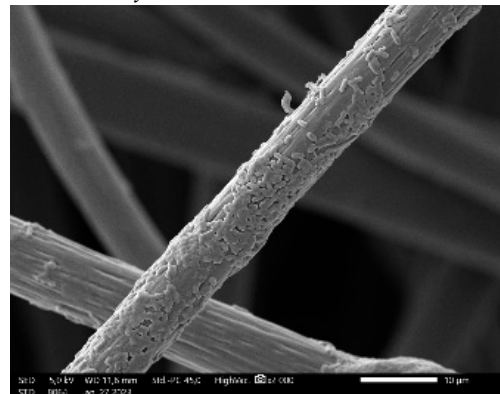
43. *Citrobacter freundii*



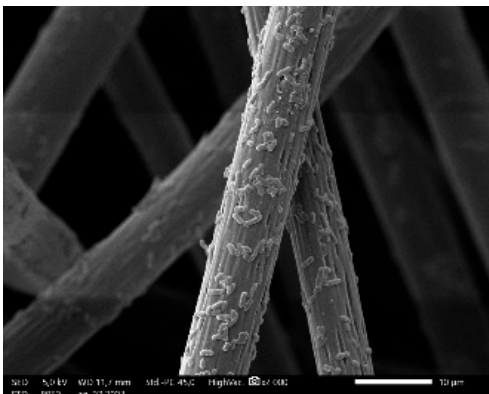
40. *E. coli*



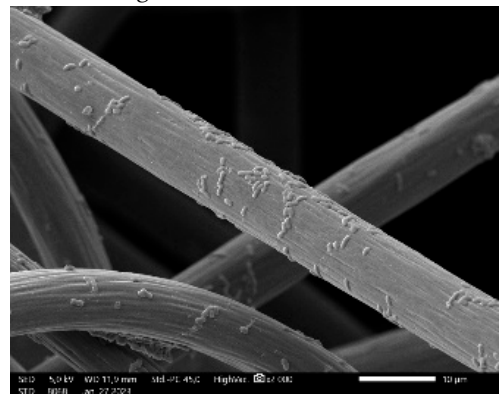
44. *Citrobacter freundii*



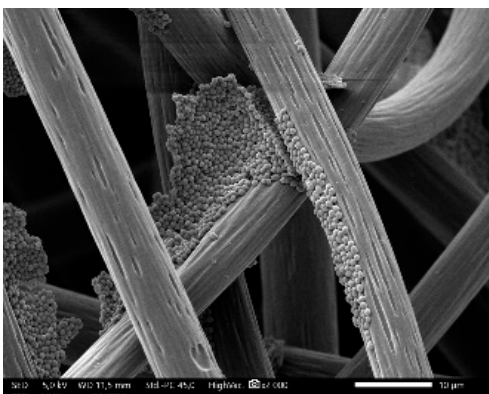
41. *Citrobacter brakkii*



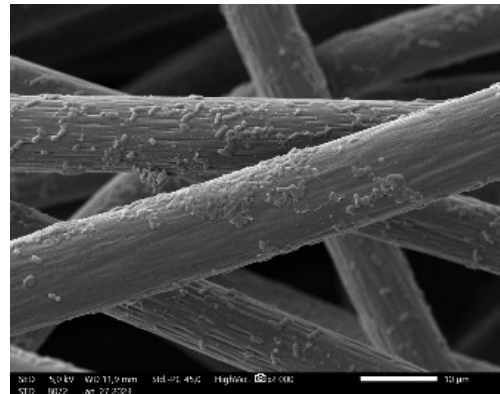
45. *Citrobacter gillenii*



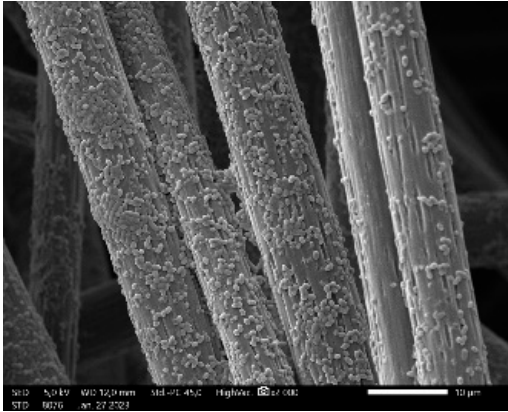
42. *Lactobacillus lactis*



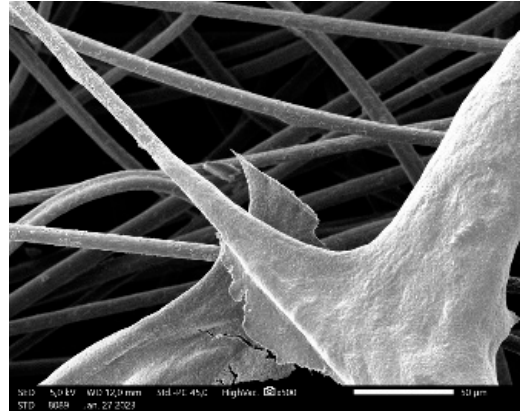
46. *Lactococcus lactis*



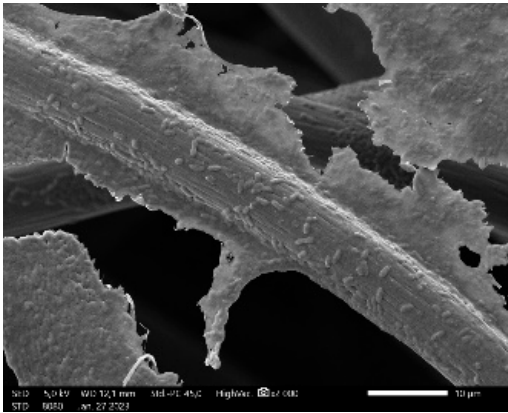
47. *Aeromonas veronii*



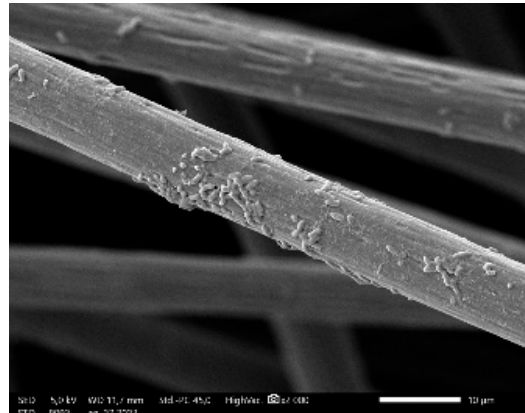
50. *Citrobacter braakii*



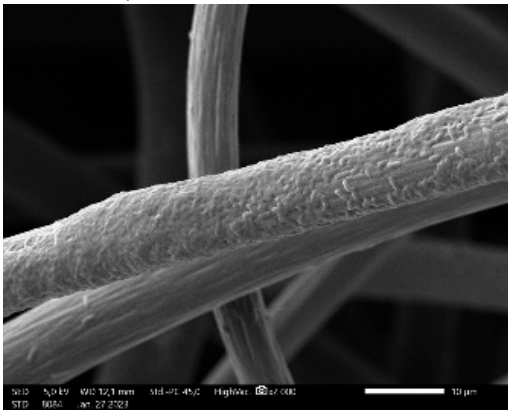
48. *Lactococcus lactis*



51. *Lactococcus lactis*



49. *Citrobacter freundii*



52. *Pantoea agglomerans*

