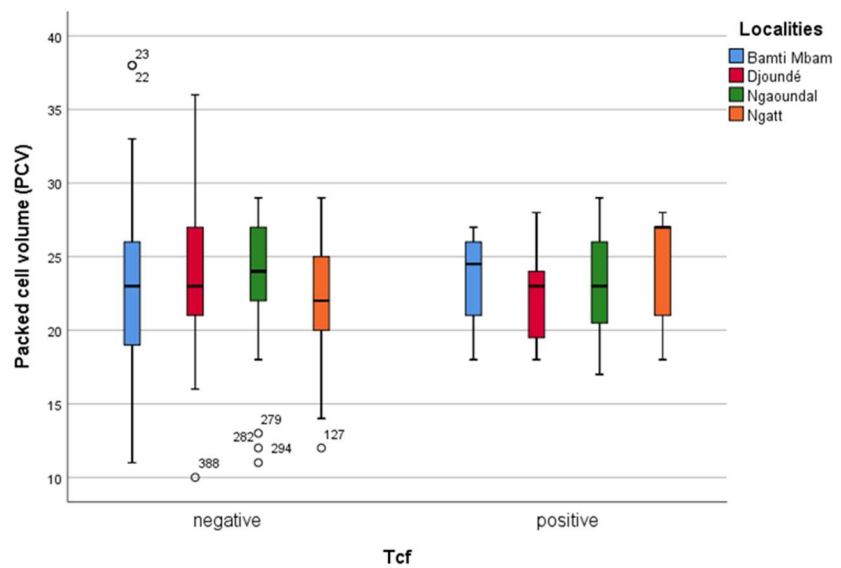
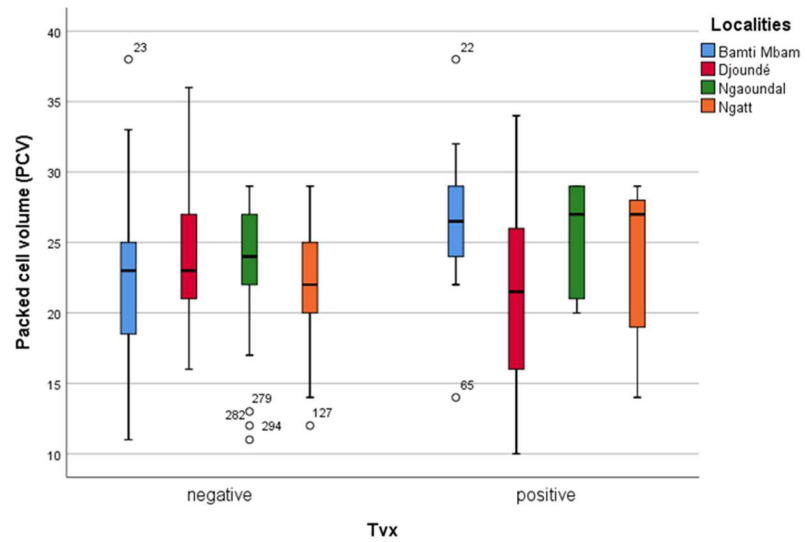


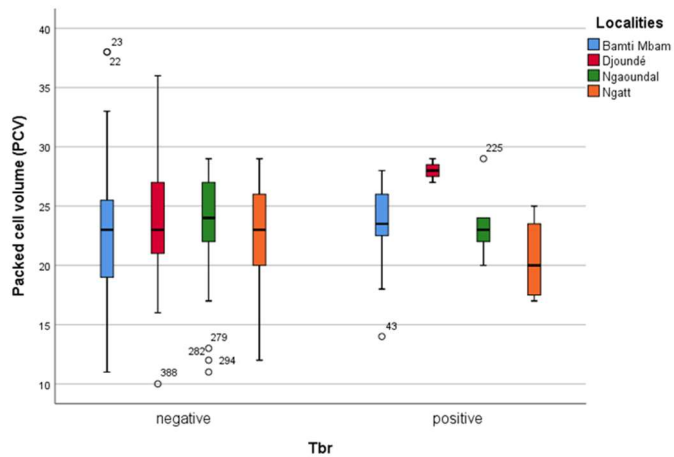
**Figure S1.** Comparison of haematocrit rates (PCV) of uninfected and of *T. congolense* savannah type infected cattle from the four sampling villages. Tcs infections were identified by PCR.



**Figure S2.** Comparison of haematocrit rates (PCV) of uninfected and of *T. congolense* forest type infected cattle from the four sampling villages. Tcf infections were identified by PCR.



**Figure S3.** Comparison of haematocrit rates (PCV) of uninfected and of *T. vivax* infected cattle from the four sampling villages. Tvx infections were identified by PCR.



**Figure S4.** Comparison of haematocrit rates (PCV) of uninfected and of *T. brucei* sl infected cattle from the four sampling villages. Tcs infections were identified by PCR.

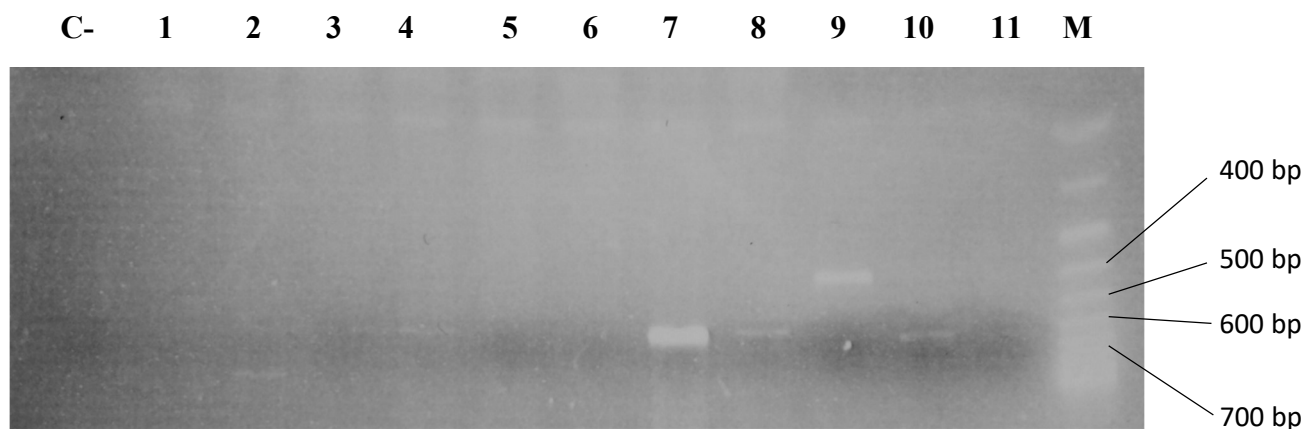


Figure S5: 2% agarose gel showing the size of the trypanosomes bands.

2 –non identified band

4,8-*Trypanosoma congolense* Savannah type ( 697 bp)

7,10 – *Trypanosoma congolense* forest type (714 pb)

9- *Trypanosma brucei* (480 pb)

1,3,5,6,11- negative samples

M-marqueur de taille de poids moléculaire 100

800 pb  
700 pb  
600 pb  
500 pb