

SUPPLEMENTARY MATERIALS

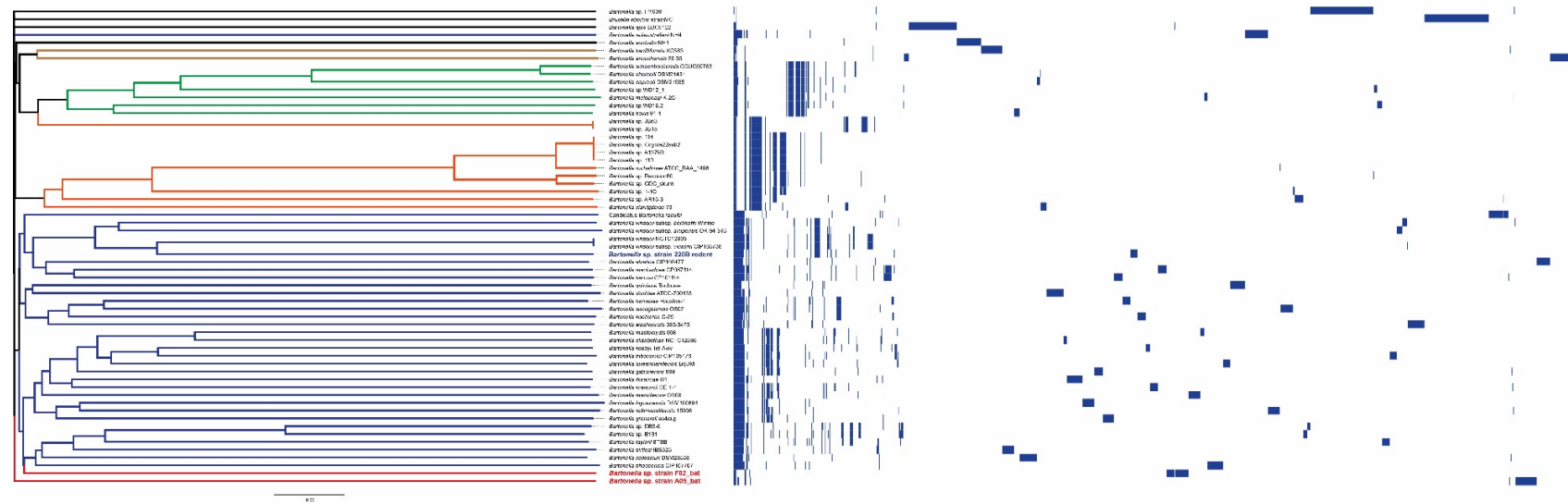


Figure S1. Pan-genome analysis of 60 *Bartonella* genomes: The neighbor-joining phylogenomic tree to the left, colored according to the described lineages: (black: ancestors; brown: lineage 1; green: lineage 2; orange: lineage 3; blue, lineage 4; red: lineage 5). The matrix on the right is the calculated pan-genome for *Bartonella* genomes.