

Figure S1. Webs made by *Ephestia cautella* larvae to avoid hostile conditions, following treatment of rice grain with *Beauveria bassiana* MS-8 at a kaolin dose of 2g kg⁻¹ of grain

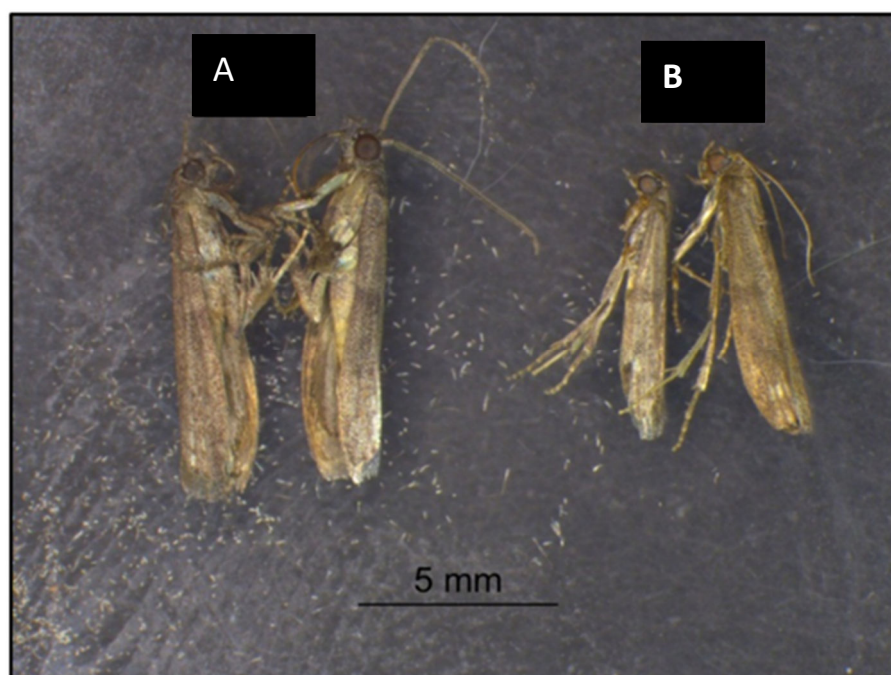


Figure S2. A= *Ephestia cautella* adults that emerged from untreated rice grain; B = adults that emerged from rice grains, following treatment with *Beauveria bassiana* MS-8 at a kaolin dose of 2g kg⁻¹ of grain, showing the difference in size