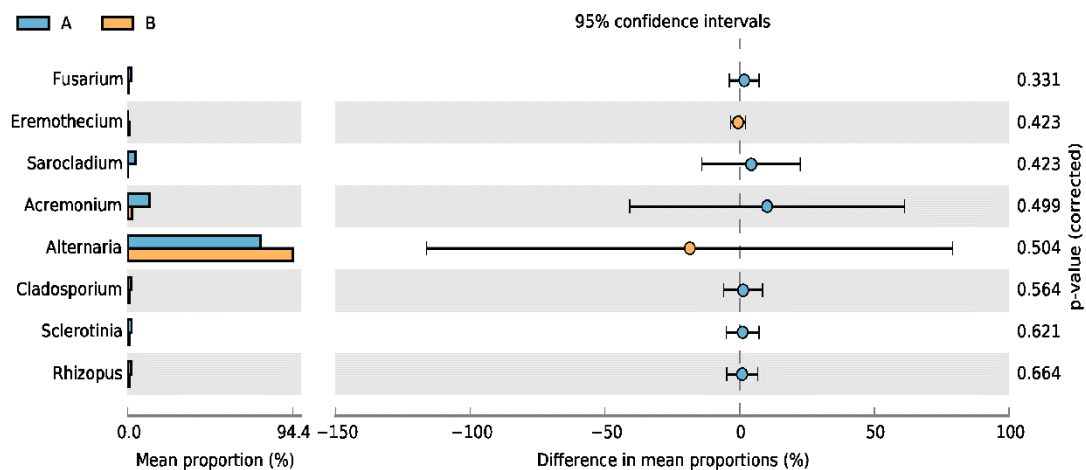


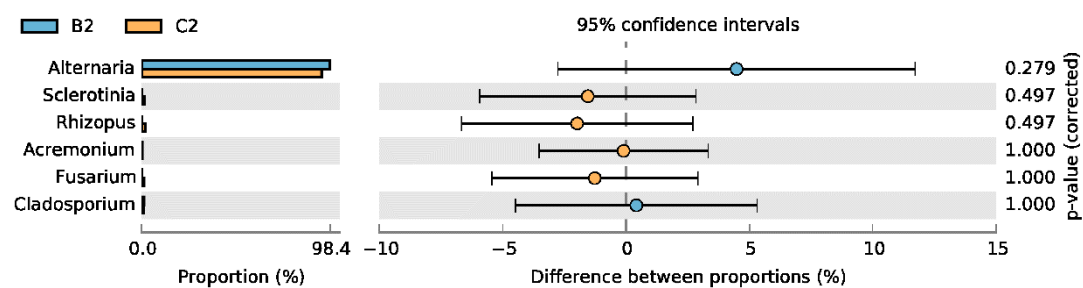
(a)



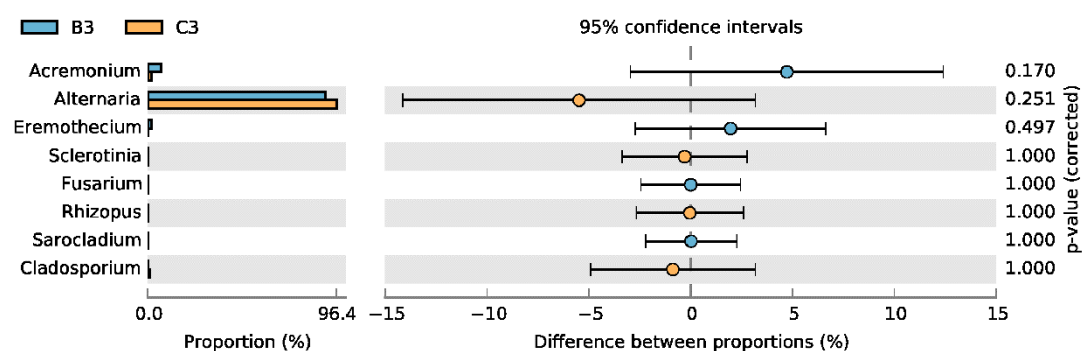
(b)

Supplement Figure S1. ANOSIM and STAMP analysis of fungal communities in normal and mildewed post-storage sunflower-seed kernels. Group A: unmildewed. Group B, mildewed. (a) ANOSIM. (b) STAMP

ANOSIM and STAMP analysis identified no significant differences between the mildewed and normal samples ($R = 0.704$, $p = 0.1$), suggesting that the fungal community did not change significantly after internal mildewing.



(a)



(b)

Supplement Figure S2. STAMP analysis of fungal community compositions in internally mildewed sunflower-seed kernels. B, post-storage seeds. C, post-harvest seeds. (a) B2, B3, post-storage seeds (2019-2020). (b) C2, C3, post-harvest seeds (2019-2020).

Fungal community composition between the post-storage and post-harvest mildewed samples was also similar, with no significances.