

Supplementary file

Table S1. Oligonucleotide sequences of primers used in the study.

Gene	Primer	Oligonucleotide sequences (5-3)	size
<i>bla_{IMP}</i>	IMP_F	5'-GGA ATA GAG TGG CTT AAY TCT C-3'	188bp
	IMP_R	5'-CCA AAC YAC TAS GTT ATC T-3'	
<i>bla_{OXA-48}</i>	OXA-48_F	5'-TGT TTT TGG TGG CAT CGA T-3'	300bp
	OXA-48_R	5'-GAT CGC GAT TCC AAG TGG-3'	
<i>bla_{VIM}</i>	VIM_F	5'-CAT GGT GTT TGG TCG CAT A-3'	390bp
	VIM_R	5'-CGA ATG CGC AGC ACC AG-3'	
<i>bla_{NDM}</i>	NDM_F	5'-GGG CAG TCG CTT CCA ACG GT-3'	475bp
	NDM_R	5'-GTA GTG CTC AGT GTC GGC-3'	
<i>bla_{KPC}</i>	KPC_F	5'-CGT CTA GTT CTG CTG TCT TG-3'	798bp
	KPC_R	5'-CTT GTC ATC CTT GTT AGG CG-3'	

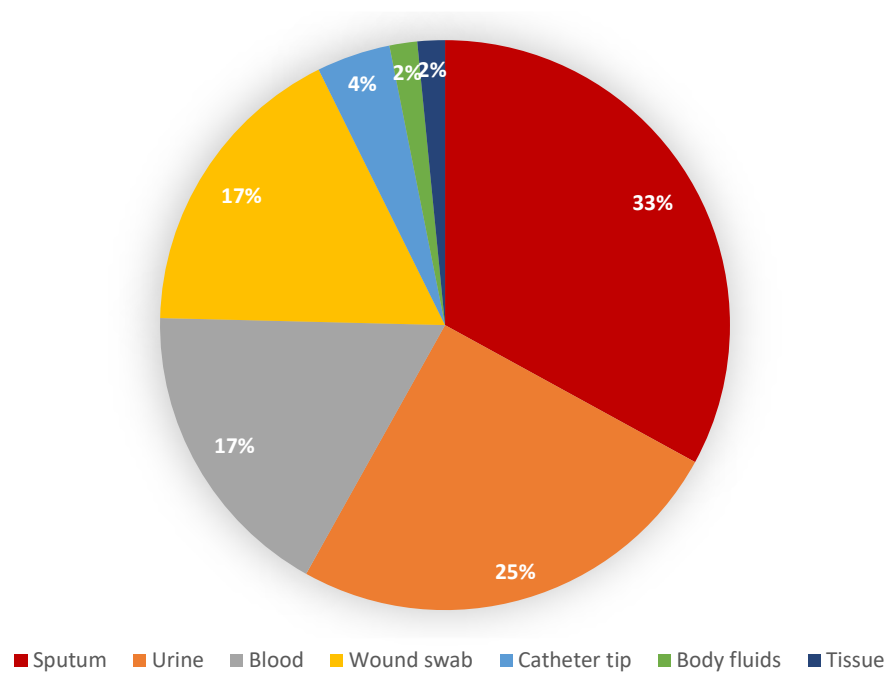


Figure S1. Distribution of various specimen types collected.

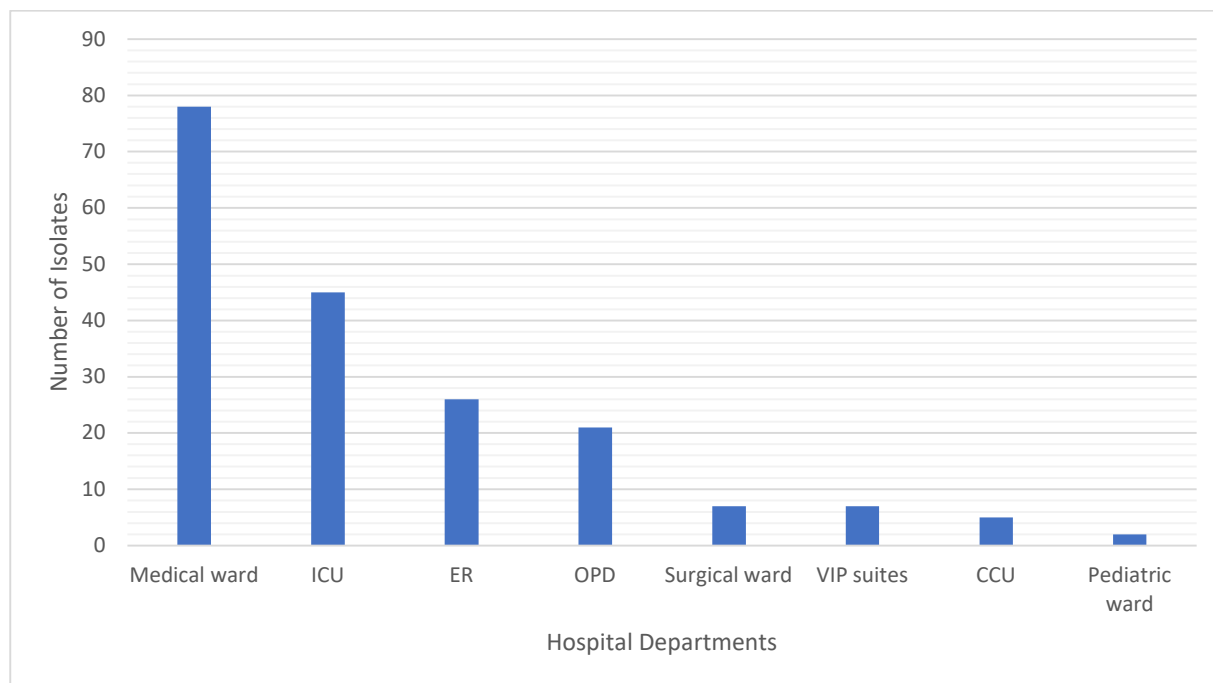


Figure S2. Distribution of hospital departments from which the samples were collected.

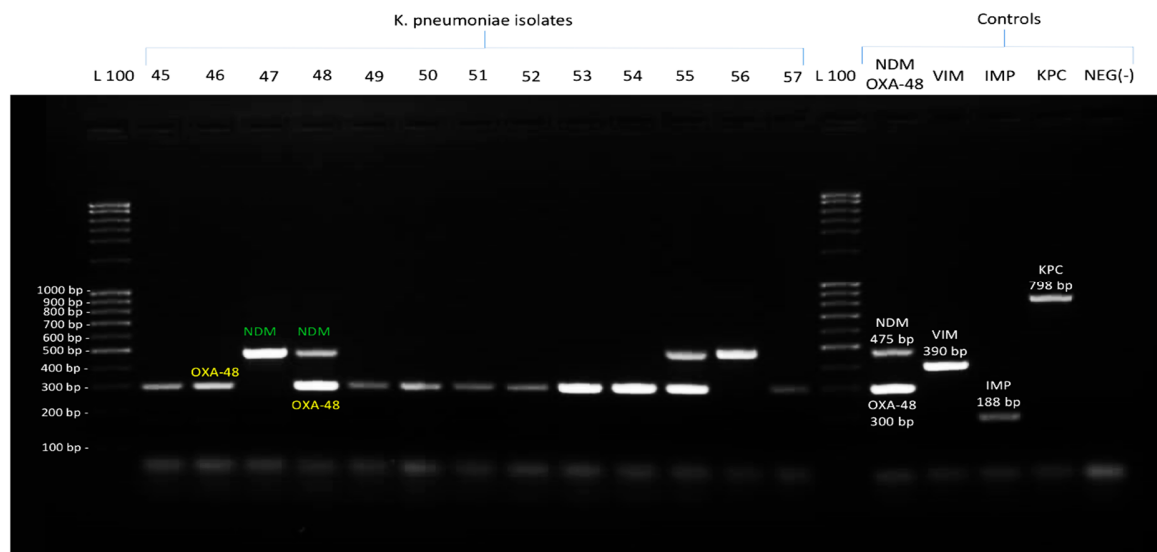


Figure S3. Representation of the multiplex-PCR patterns of various carbapenemase genes of *K. pneumoniae* isolates shown on gel electrophoresis.