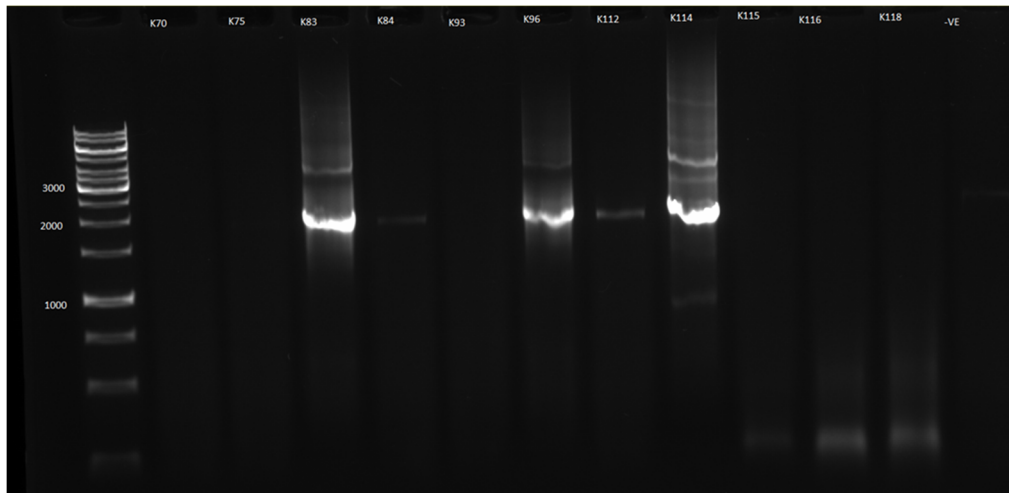
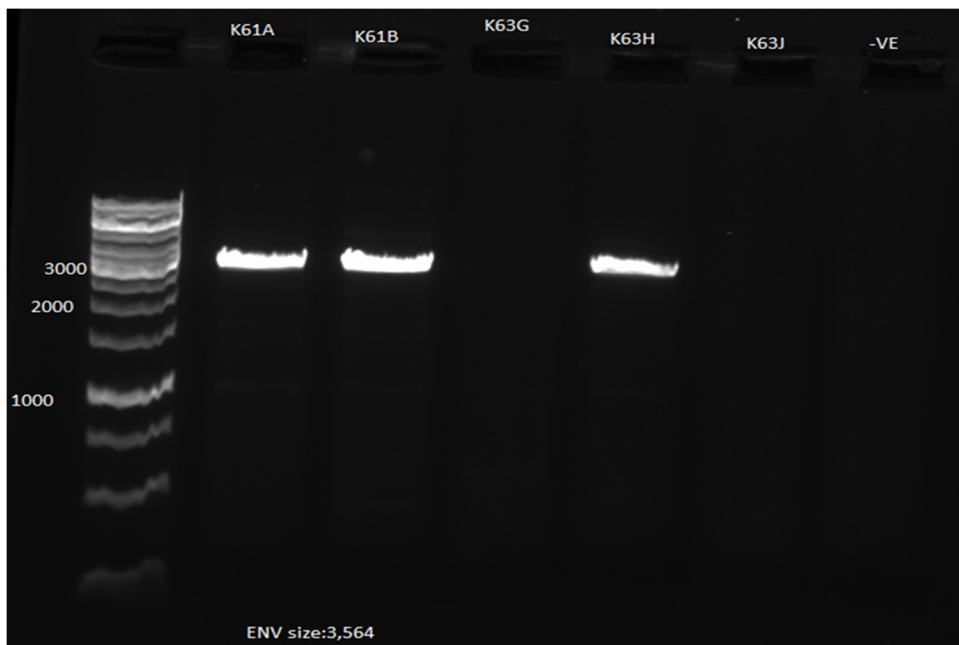


Supplementary Materials:



Supplementary Figure S1. Gel picture, showing the amplification of Gag-PR. Gag-PR size 1.7 kb.



Supplementary Figure S2. Gel picture showing the amplification of envelope. Envelope size 3.5 kb.

Supplementary Table S1. Sequencing Primers.

Forward Primers		
REC1F	5581 → 5602	5'- AGG GGC CGC AGA GGG AAC CAT A -3'
ENV-Z1F	6327 → 6353	5'- TGG GTC ACA GTC TAT TAT GGG GTA CCT- 3'
ENV-DF	7208 → 7226	5'- AGC ACA TTG TAA CAT TAG T- 3'
ENV-TUG	7859 → 7879	5'- GTC TGG TAT AGT GCA ACA GCA- 3'
Reverse Primers		
E270R	8566 ← 8585	5'- GCG TCC CAG AAG TTC CAC TG- 3'
ENV-ZAR	7629 ← 7652	5'- GTC CCT CAT ATC TCC TCC TCC TCT- 3'