

Supplementary Materials

Metal–Phenolic Film-Coated Quartz Crystal Microbalance as a Selective Sensor for Methanol Detection in Alcoholic Beverages

Karekin D. Esmeryan *, Yuliyana Lazarov, Teodor Grakov, Yulian I. Fedchenko, Lazar G. Vergov and Stefan Staykov

Acoustoelectronics Laboratory, Georgi Nadjakov Institute of Solid State Physics, Bulgarian Academy of Sciences, 72, Tzarigradsko Chaussee Blvd., 1784 Sofia, Bulgaria

* Correspondence: karekin_esmerian@abv.bg; Tel.: +359-2-979-5811

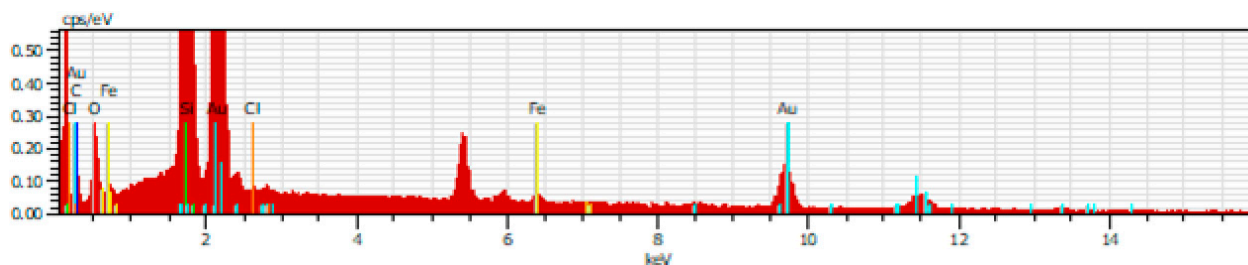


Figure S1. EDX spectrum of the MPF-QCM in the areas without FeCl_3 particles.

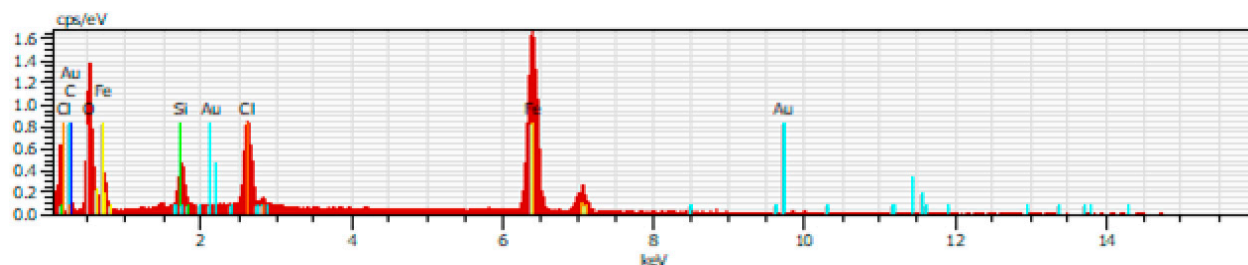


Figure S2. EDX spectrum of the MPF-QCM in the areas with FeCl_3 particles.