

Investigations into the *in vitro* metabolism of hGH and IGF-I employing stable-isotope labelled drugs and monitoring diagnostic immonium ions by high resolution/high accuracy mass spectrometry

Supplemental Information

Sophia Krombholz ¹, Andreas Thomas ^{1*} and Mario Thevis ^{1,2}

¹ Institute of Biochemistry/Center for Preventive Doping Research, German Sports University Cologne, Am Sportpark Müngersdorf 6, 50933 Cologne, Germany

² European Monitoring Center for Emerging Doping Agents (EuMoCEDA), Cologne/Bonn, Germany

| | |
|---|---|
| Figure S 1: Product ion mass spectrum of hGH 135-142 (m/z 922.4993); NCE: 25 % | 2 |
| Figure S 2: Product ion mass spectrum of hGH 135-143 (m/z 1085.56263); NCE: 26 % | 2 |
| Figure S 3: Product ion mass spectrum of hGH 34-44 (m/z 687-3586); NCE: 22 % | 2 |
| Figure S 4: Product ion mass spectrum of hGH 125-139 (m/z 832-4147); NCE: 30 % | 3 |
| Figure S 5: Product ion mass spectrum of hGH 29-41 (m/z 811-3909); NCE: 25 %; *pE: pyroglutamate | 3 |
| Figure S 6: Product ion mass spectrum of hGH 9-16 (m/z 979.5030); NCE: 35 % | 3 |
| Figure S 7: Product ion mass spectrum of hGH 86-91 (m/z 771.4036); NCE: 22 % | 4 |
| Figure S 8: Product ion mass spectrum of hGH 102-113 (m/z 1302.5848); NCE: 22 % | 4 |
| Figure S 9: Product ion mass spectrum of hGH 114-124 (m/z 629.8481); NCE: 22 % | 4 |
| Figure S 10: Product ion mass spectrum of hGH 29-38 (m/z 1236.5783); NCE: 25 % | 5 |
| Figure S 11: Product ion mass spectrum of hGH 86-92 (m/z 918.4720); NCE: 22 % | 5 |
| Figure S 12: Product ion mass spectrum of hGH 1-13 (m/z 745.9037); NCE: 23 % | 5 |
| Figure S 13: Product ion mass spectrum of hGH 1-16 (m/z 631.0135); NCE: 22 % | 6 |
| Figure S 14: Product ion mass spectrum of IGF 25-36 (m/z 650.8177); NCE: 24 % | 6 |
| Figure S 15: Product ion mass spectrum of IGF 25-35 (m/z 572.7671); NCE: 24 % | 6 |
| Figure S 16: Product ion mass spectrum of IGF 24-31 (m/z 989.4727); NCE: 25 % | 7 |
| Figure S 17: Product ion mass spectrum of IGF 22-36 (m/z 834.3943); NCE: 27 % | 7 |
| Figure S 18: Product ion mass spectrum of IGF 4-70 (m/z 921.0660); NCE: 30 % | 7 |
| Figure S 19: Product ion mass spectrum of IGF 3-36(m/z 922.1817); NCE: 25 % | 8 |
| Figure S 20: Product ion mass spectrum of IGF 3-35 after reduction with TCEP (m/z 1177.8781); NCE: 25 % | 8 |
| Figure S 21: Product ion mass spectrum of IGF 3-31 after reduction with TCEP (m/z 1071.8387); NCE: 25 % | 8 |
| Figure S 22: Product ion mass spectrum of IGF 3-24 after reduction with TCEP (m/z 1203.55901); NCE: 25 % | 9 |

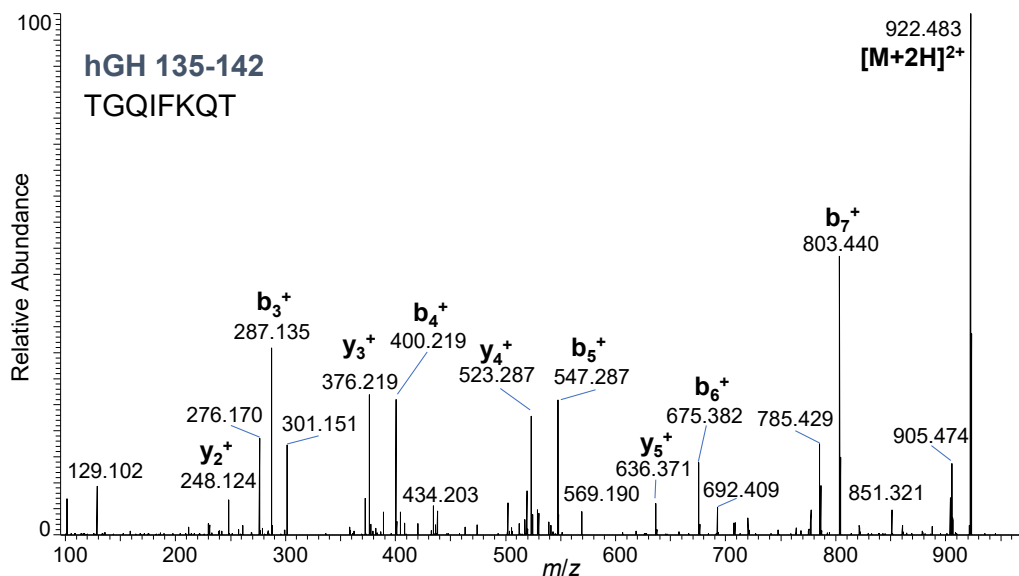


Figure S 1: Product ion mass spectrum of hGH 135-142 (m/z 922.4993); NCE: 25 %

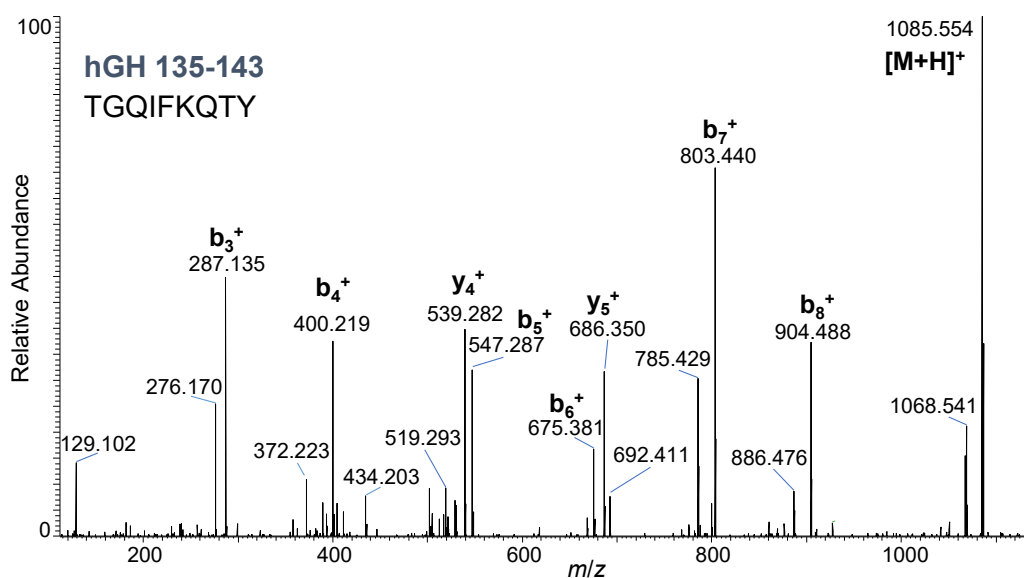


Figure S 2: Product ion mass spectrum of hGH 135-143 (m/z 1085.56263); NCE: 26 %

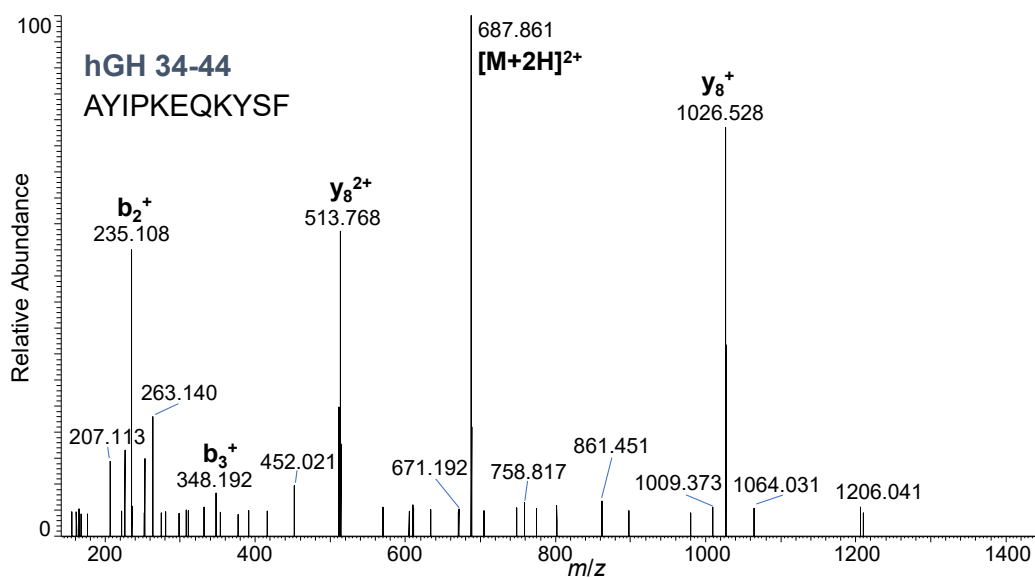


Figure S 3: Product ion mass spectrum of hGH 34-44 (m/z 687-3586); NCE: 22 %

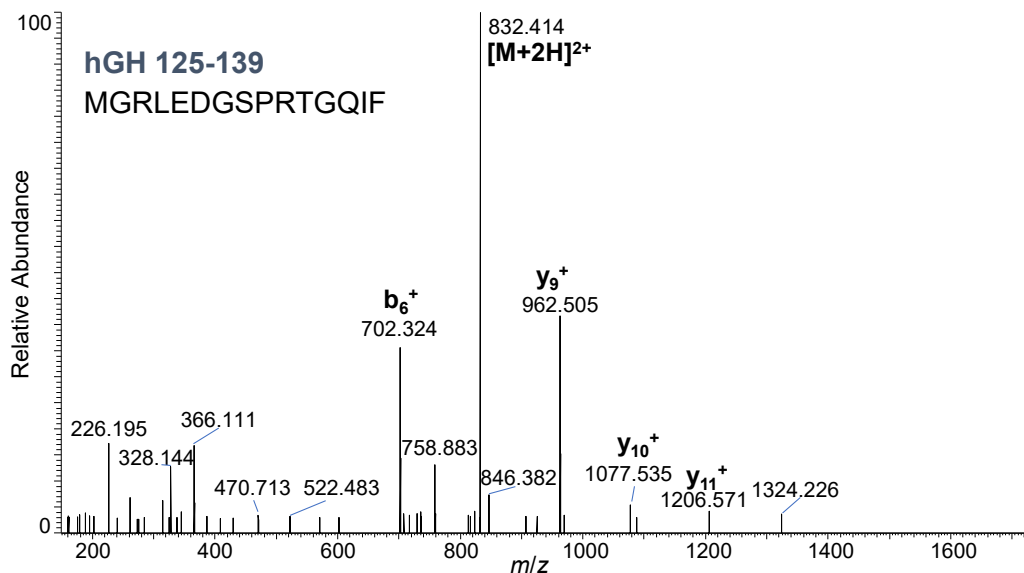


Figure S 4: Product ion mass spectrum of hGH 125-139 (m/z 832-4147); NCE: 30 %

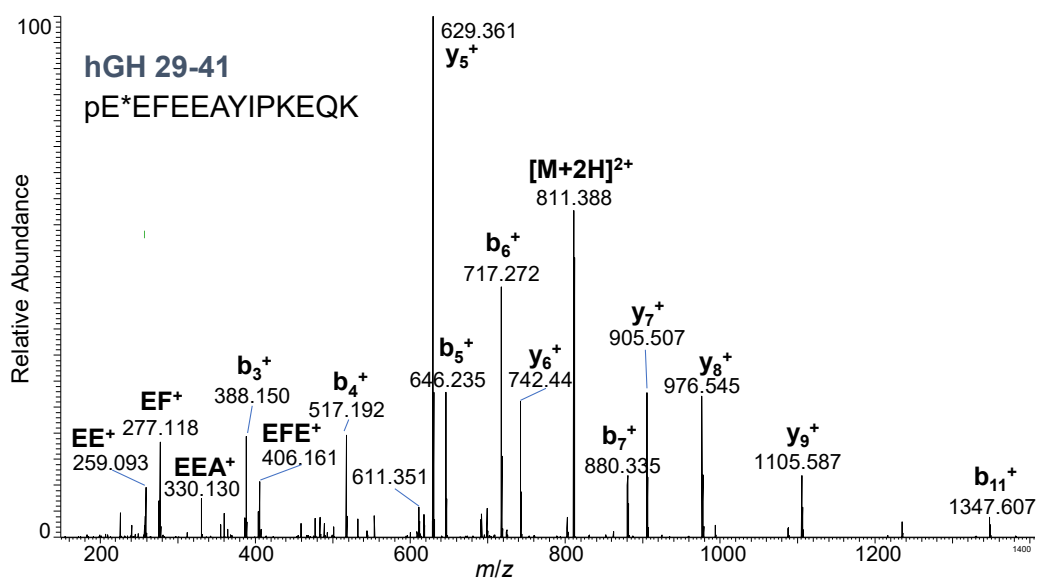


Figure S 5: Product ion mass spectrum of hGH 29-41 (m/z 811-3909); NCE: 25 %; *pE: pyroglutamate

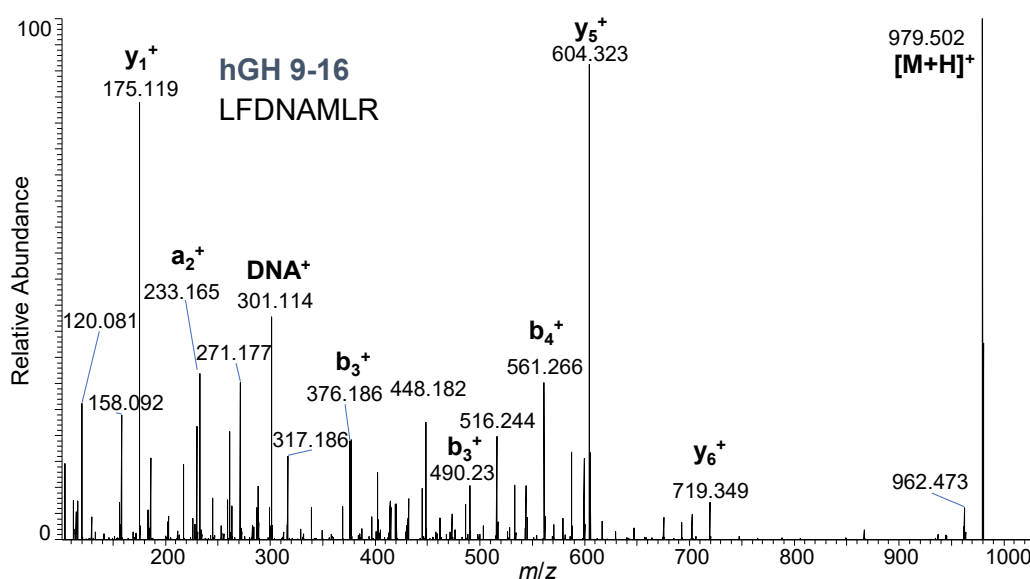


Figure S 6: Product ion mass spectrum of hGH 9-16 (m/z 979.5030); NCE: 35 %

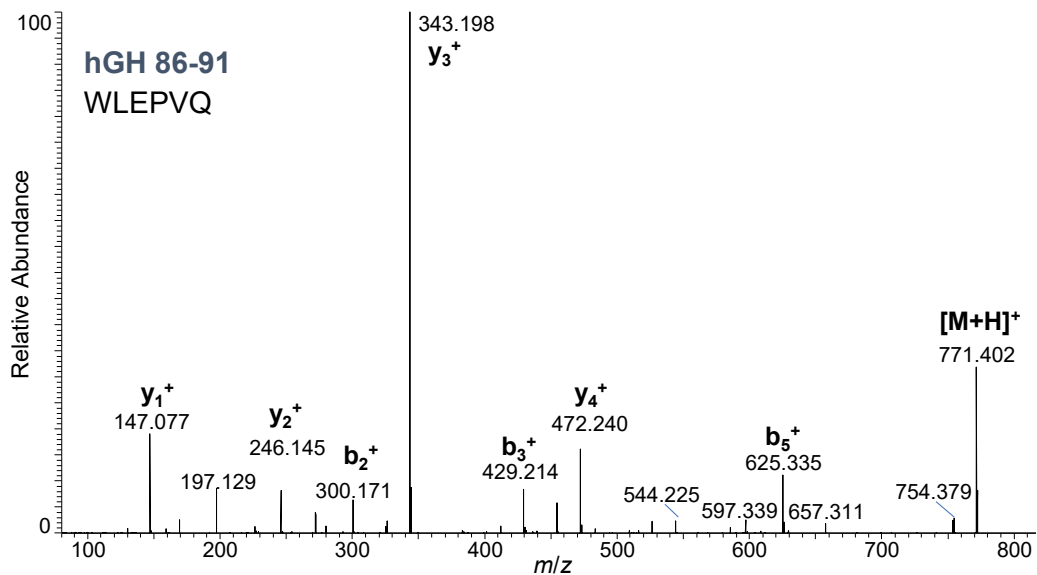


Figure S 7: Product ion mass spectrum of hGH 86-91 (m/z 771.4036); NCE: 22 %

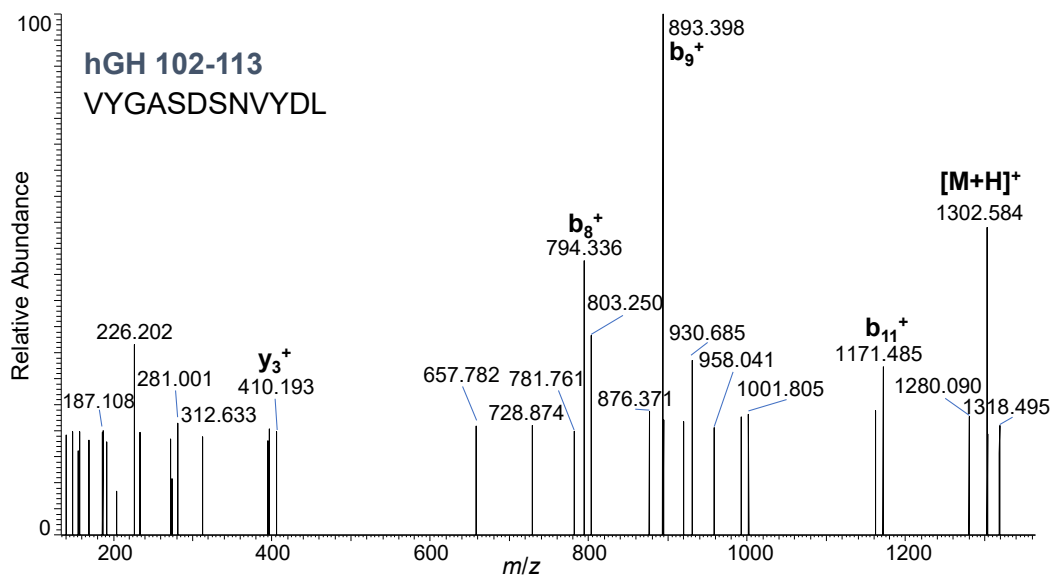


Figure S 8: Product ion mass spectrum of hGH 102-113 (m/z 1302.5848); NCE: 22 %

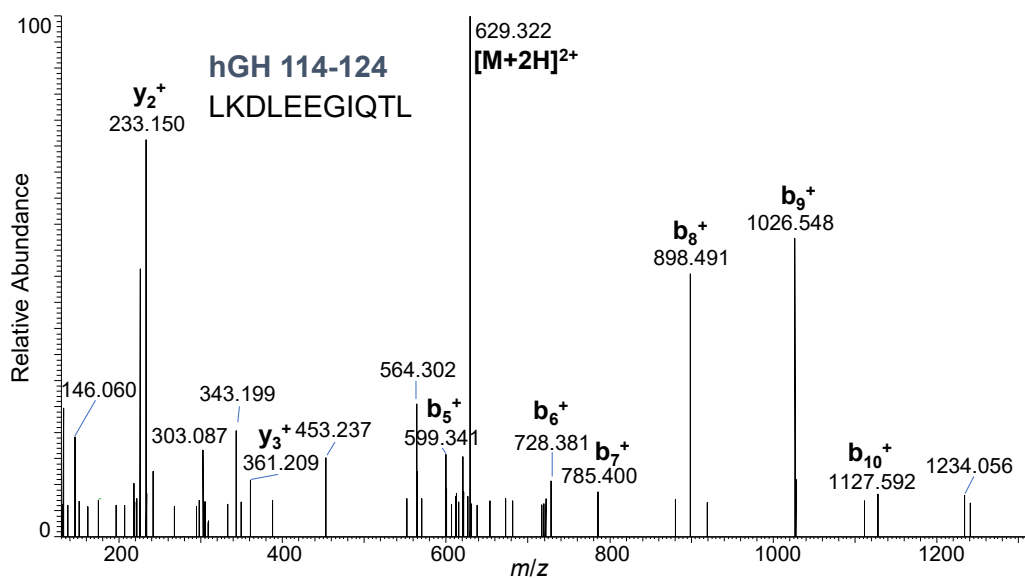


Figure S 9: Product ion mass spectrum of hGH 114-124 (m/z 629.8481); NCE: 22 %

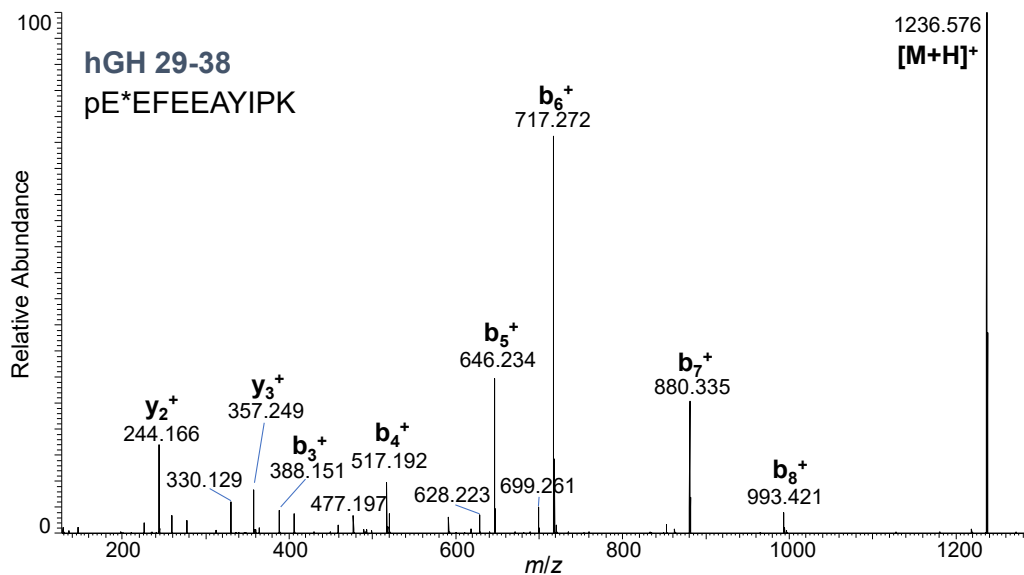


Figure S 10: Product ion mass spectrum of hGH 29-38 (m/z 1236.5783); NCE: 25 %

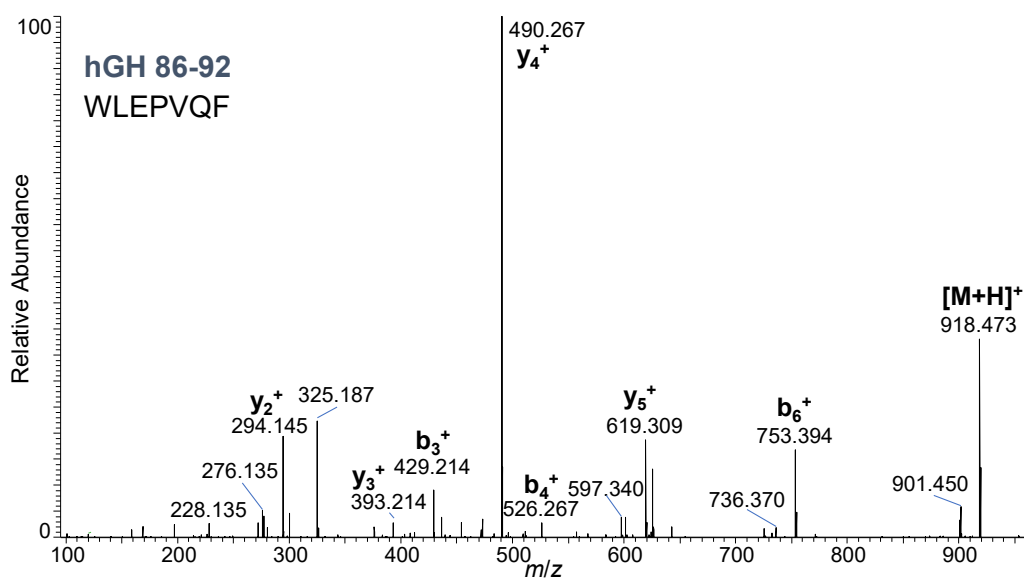


Figure S 11: Product ion mass spectrum of hGH 86-92 (m/z 918.4720); NCE: 22 %

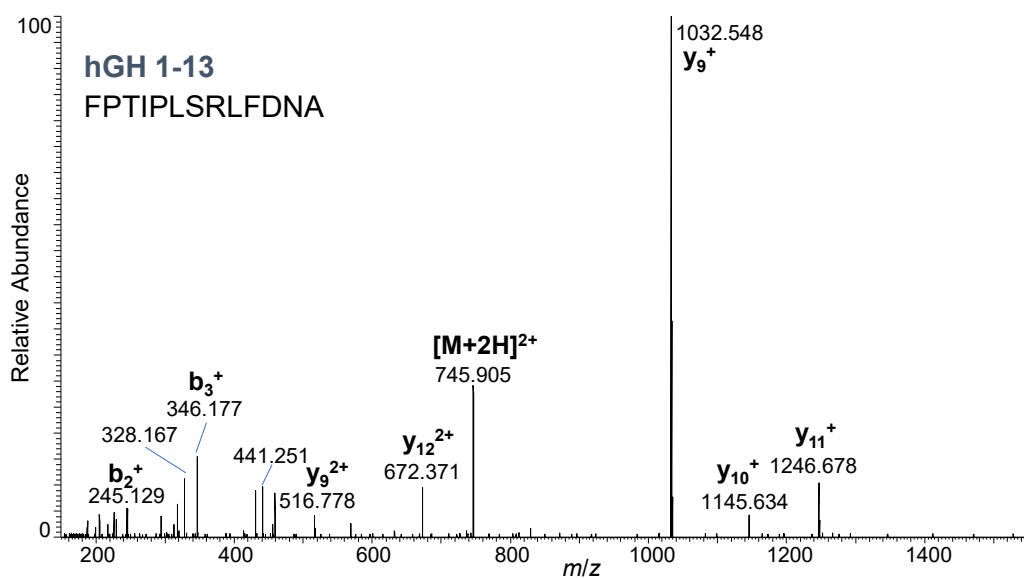


Figure S 12: Product ion mass spectrum of hGH 1-13 (m/z 745.9037); NCE: 23 %

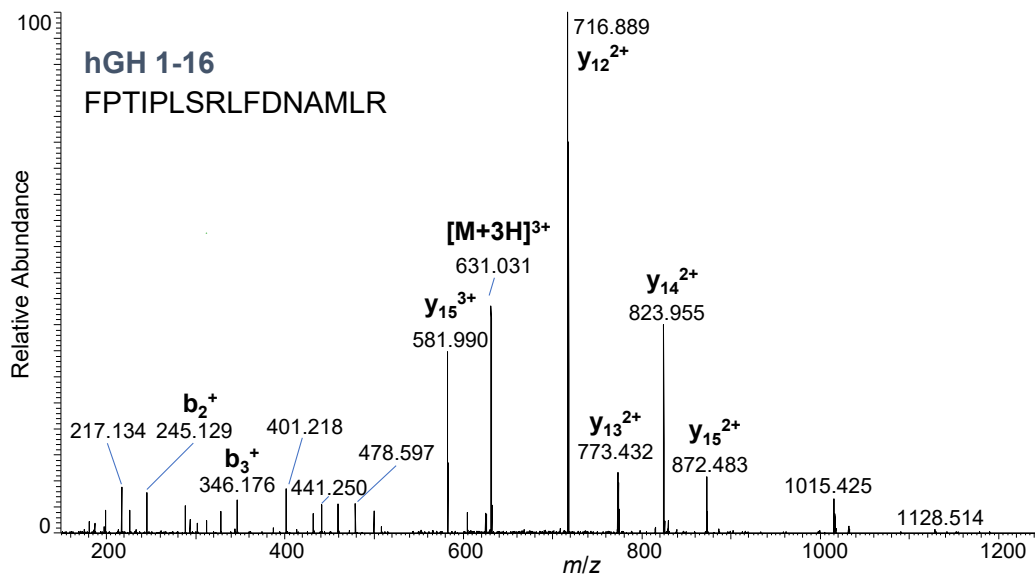


Figure S 13: Product ion mass spectrum of hGH 1-16 (m/z 631.0135); NCE: 22 %

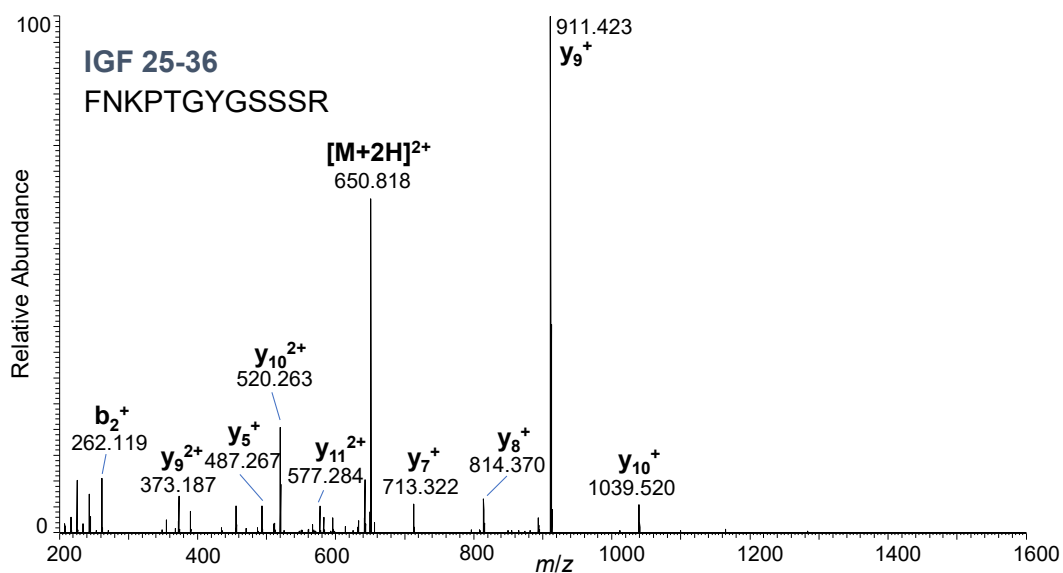


Figure S 14: Product ion mass spectrum of IGF 25-36 (m/z 650.8177); NCE: 24 %

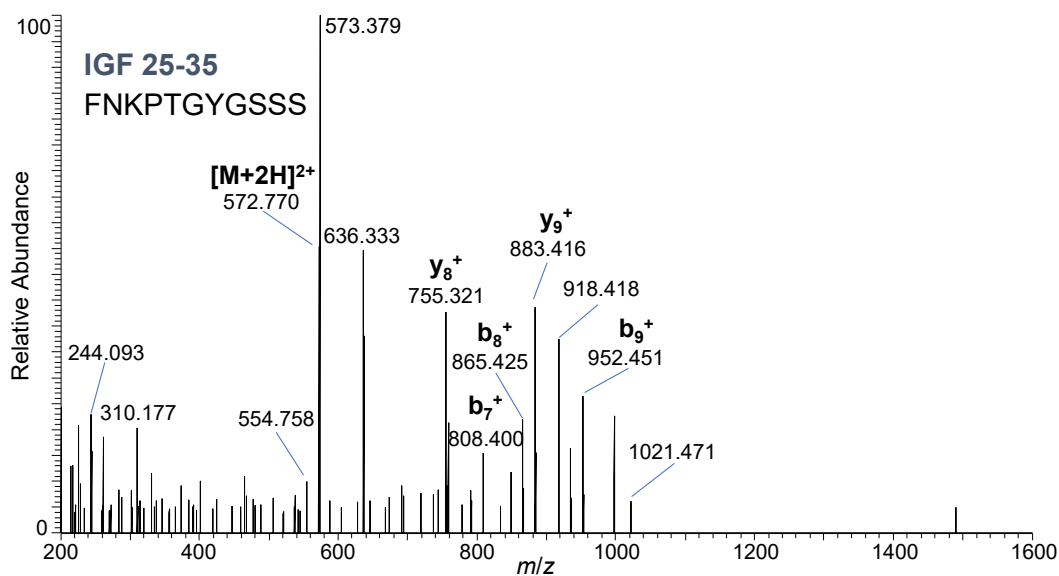


Figure S 15: Product ion mass spectrum of IGF 25-35 (m/z 572.7671); NCE: 24 %

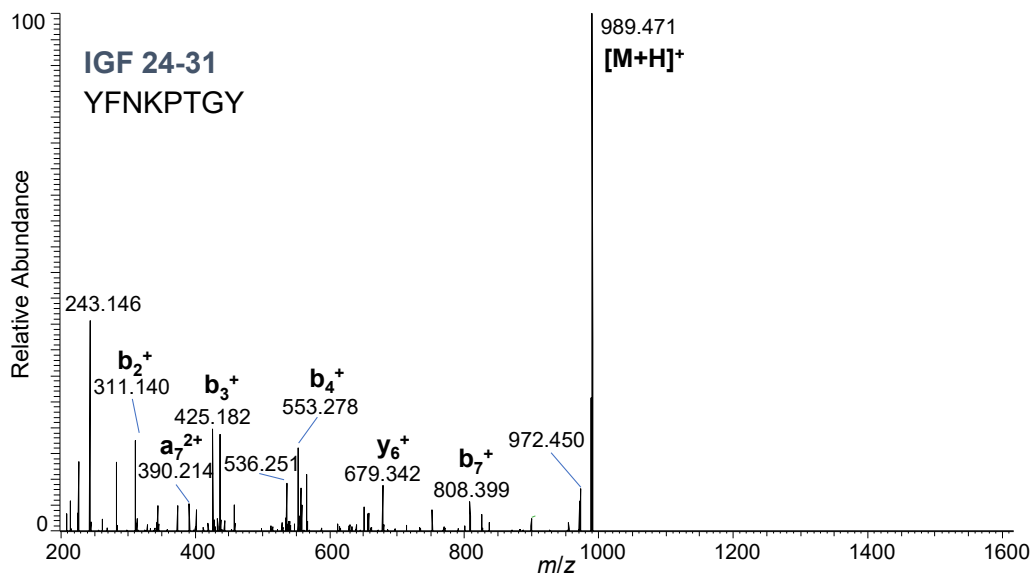


Figure S 16: Product ion mass spectrum of IGF 24-31 (m/z 989.4727); NCE: 25 %

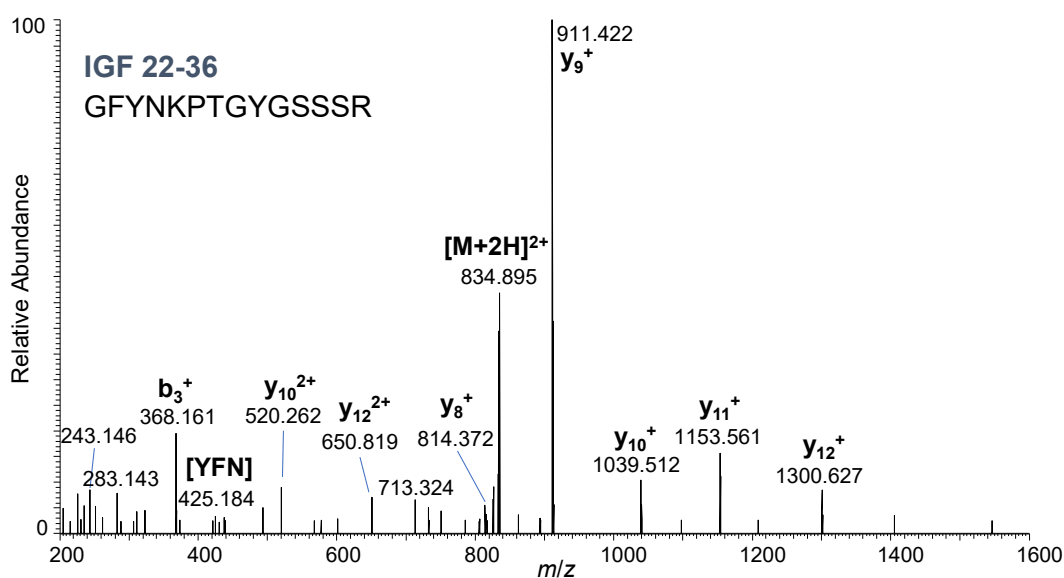


Figure S 17: Product ion mass spectrum of IGF 22-36 (m/z 834.3943); NCE: 27 %

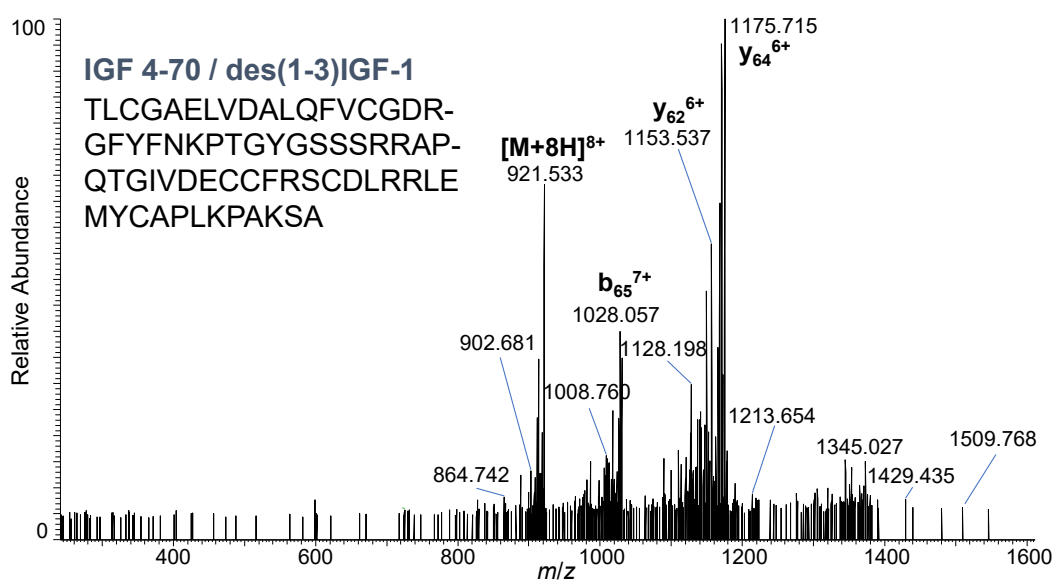


Figure S 18: Product ion mass spectrum of IGF 4-70 (m/z 921.0660); NCE: 30 %

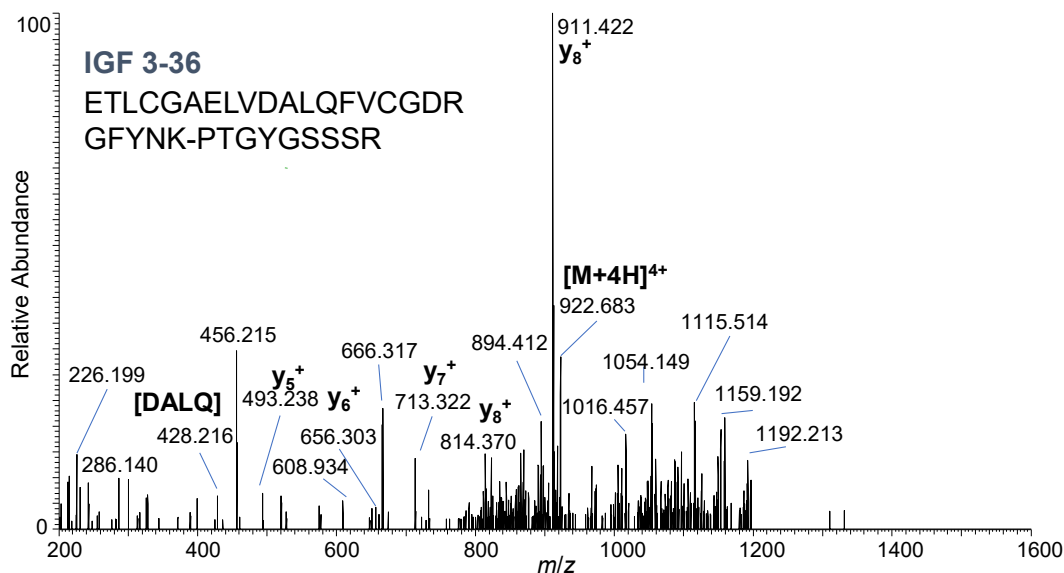


Figure S 19: Product ion mass spectrum of IGF 3-36 (m/z 922.1817); NCE: 25 %

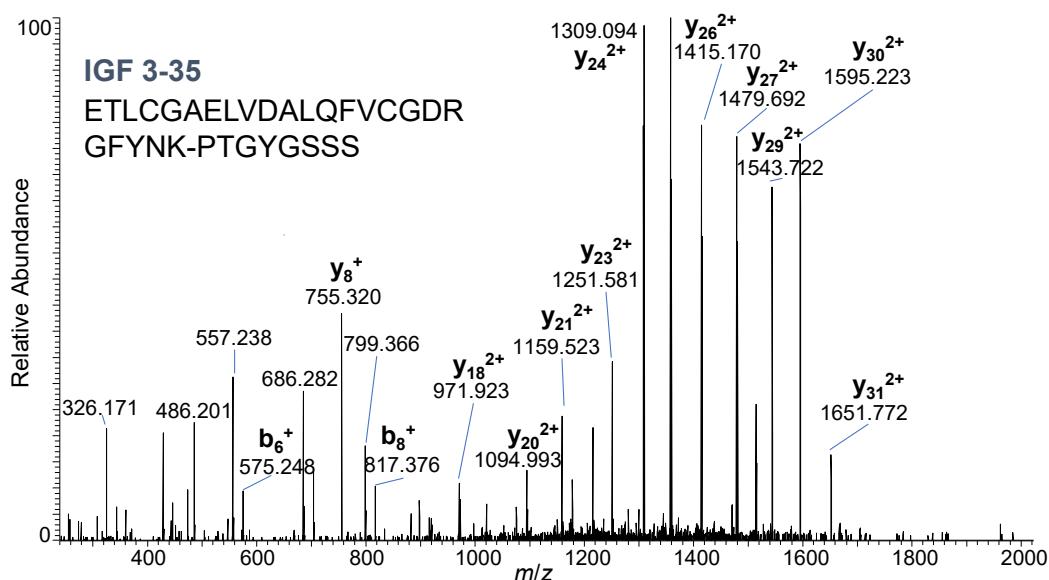


Figure S 20: Product ion mass spectrum of IGF 3-35 after reduction with TCEP (m/z 1177.8781); NCE: 25 %

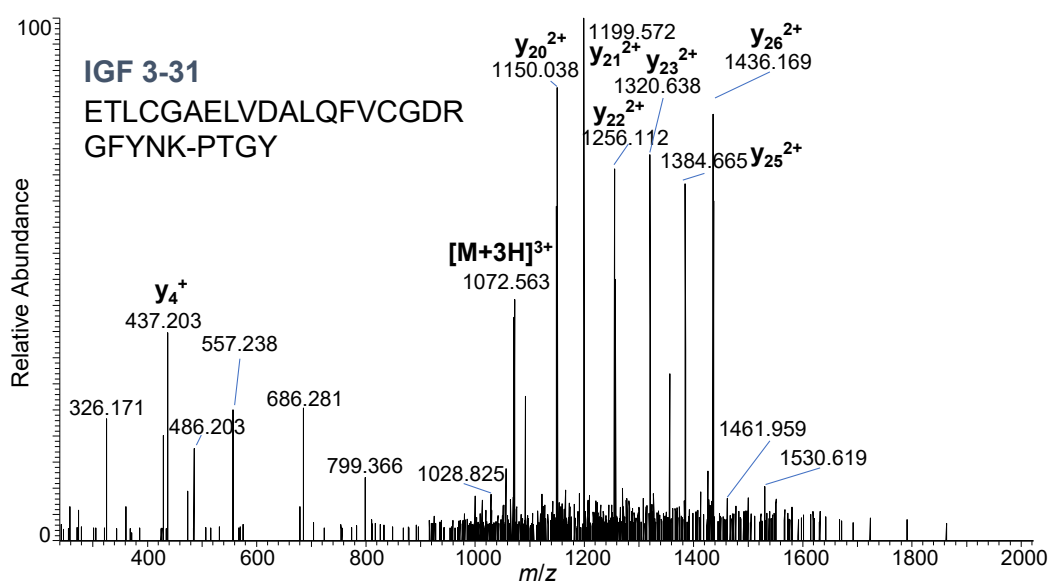


Figure S 21: Product ion mass spectrum of IGF 3-31 after reduction with TCEP (m/z 1071.8387); NCE: 25 %

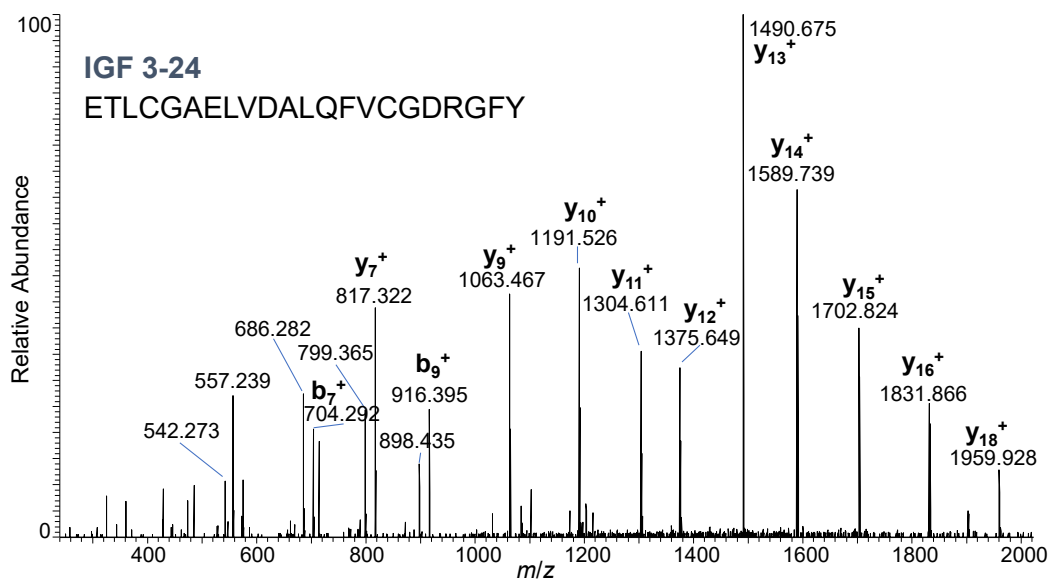


Figure S 22: Product ion mass spectrum of IGF 3-24 after reduction with TCEP (m/z 1203.55901); NCE: 25 %