

Supplementary Information

Low-Strain KVPO₄F@C as Hyperstable Anode for Potassium Ion Batteries

Figure S1

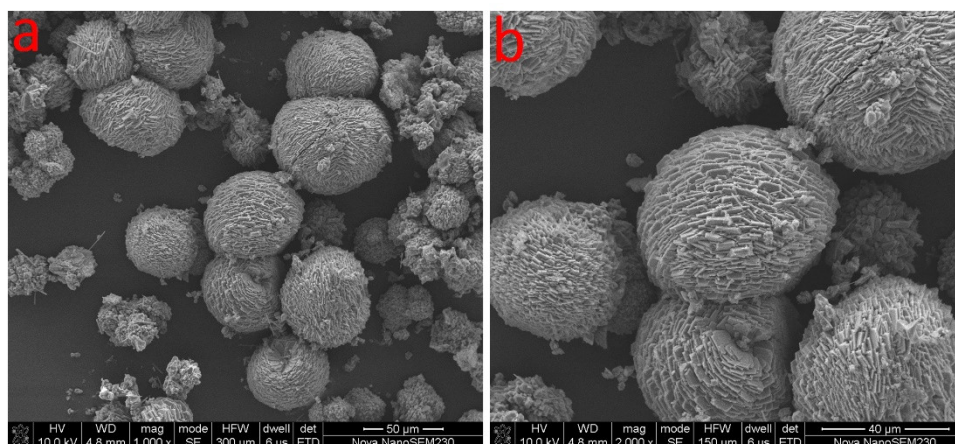


Figure S1. (a) and (b) the SEM images of KVPO₄F@C showing the reunion behavior of primary particles.

Figure S2

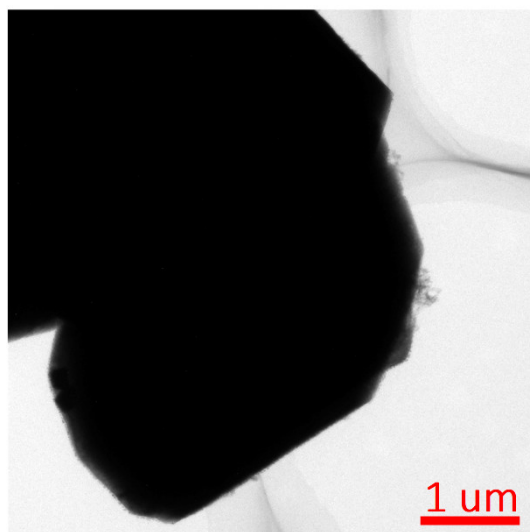
Figure S2. TEM images of bare KVPO₄F@C sample.

Figure S3

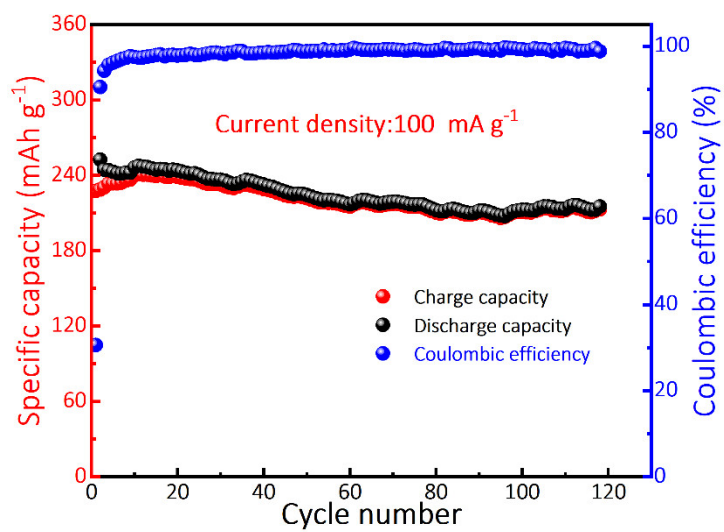
Figure S3. Cycle performance of bare KVPO₄F@C at 100 mA g⁻¹ for 120 times.

Figure S4

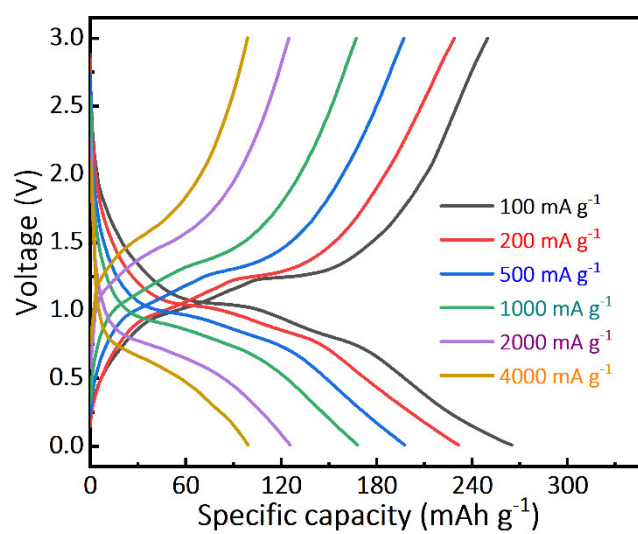


Figure S4. Selected charge/discharge curves at the current densities of 100, 200, 500, 1000, 2000 and 4000 mA g^{-1} .

Figure S5

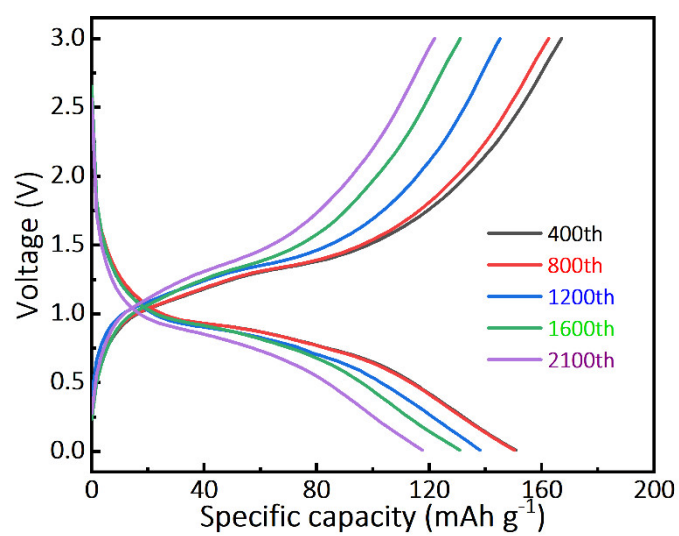


Figure S5. Selected 400th, 800th, 1200th, 1600th, and 2100th charge/discharge curves at the current density of 1000 mA g⁻¹.

Figure S6

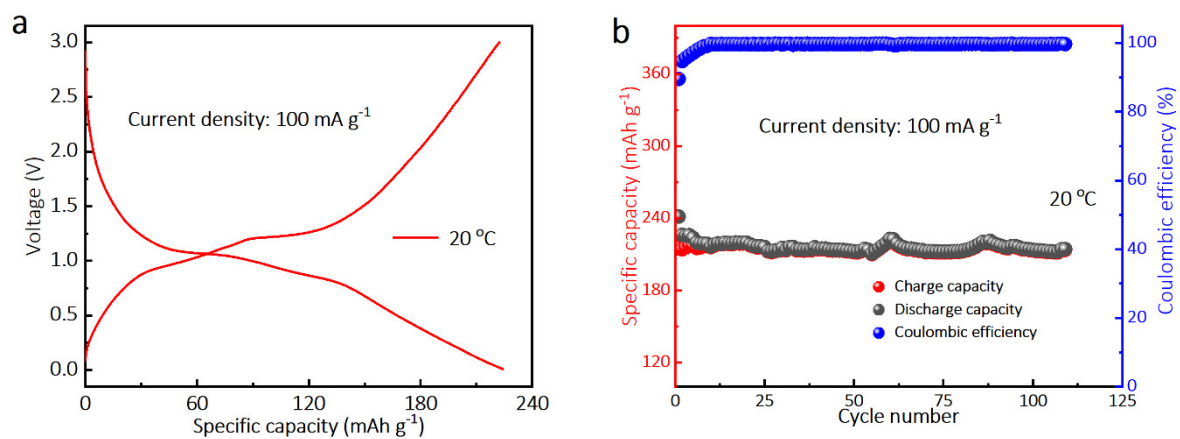


Figure S6. (a) Selected charge/discharge curves at the current densities of 100 mA g⁻¹ and (b) the cycle performance of KVPO₄F@C at 100 mA g⁻¹ for 110 times.

Figure S7

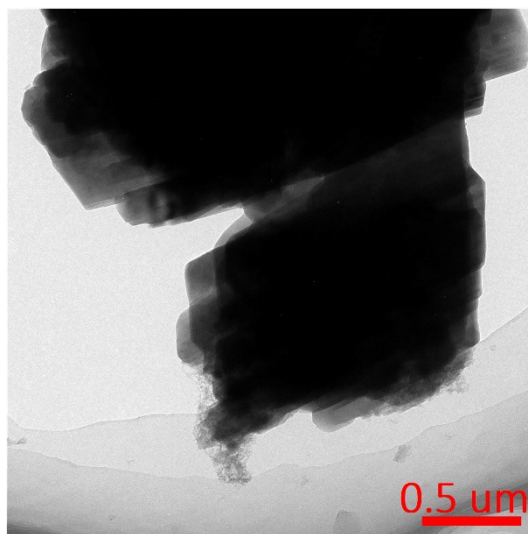


Figure S7 TEM images of KVPO₄F@C anode after cycling for 100 times.

Figure S8

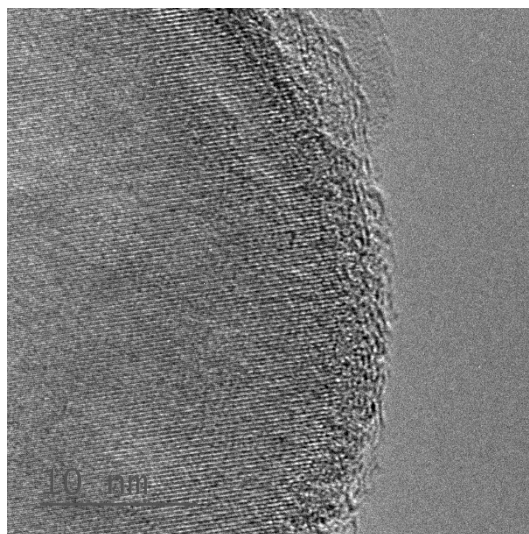


Figure S8 HRTEM images of KVPO₄F@C anode after cycling for 100 times.