

Supplementary material for

# Towards Biohybrid Lung Development: Establishment of a Porcine in vitro Model

Simon Schlör <sup>1,2,+</sup>, Michael Pflaum <sup>1,2,+</sup>, Klaus Höffler <sup>1,2</sup>, Christian Kühn <sup>1,2,3</sup>, Axel Haverich <sup>1,2,3</sup> and Bettina Wiegmann <sup>1,2,3,4,\*</sup>

<sup>1</sup> Department for Cardiothoracic, Transplantation and Vascular Surgery, Hannover Medical School, Carl-Neuberg-Str. 1, 30625 Hannover, Germany; schloer.simon@mh-hannover.de (S.S.); pflaum.michael@mh-hannover.de (M.P.); hoeffler.klaus@mh-hannover.de (K.H.); kuehn.christian@mh-hannover.de (C.K.); haverich.axel@mh-hannover.de (A.H.)

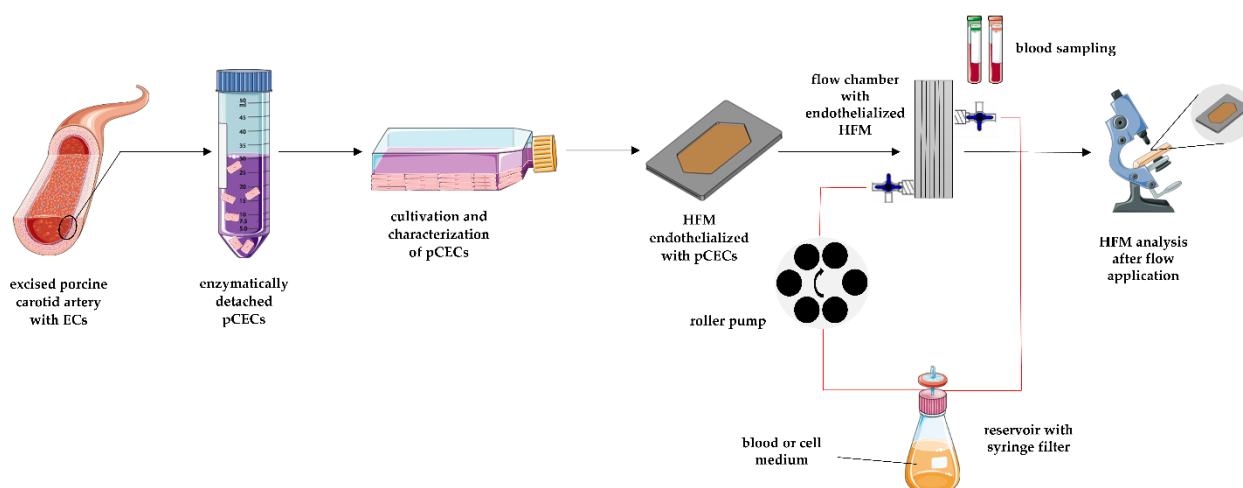
<sup>2</sup> Lower Saxony Center for Biomedical Engineering, Implant Research and Development (NIFE), Stadtfeldamm 34, 30625 Hannover, Germany

<sup>3</sup> German Center for Lung Research (DZL), Carl-Neuberg-Str. 1, 30625 Hannover, Germany

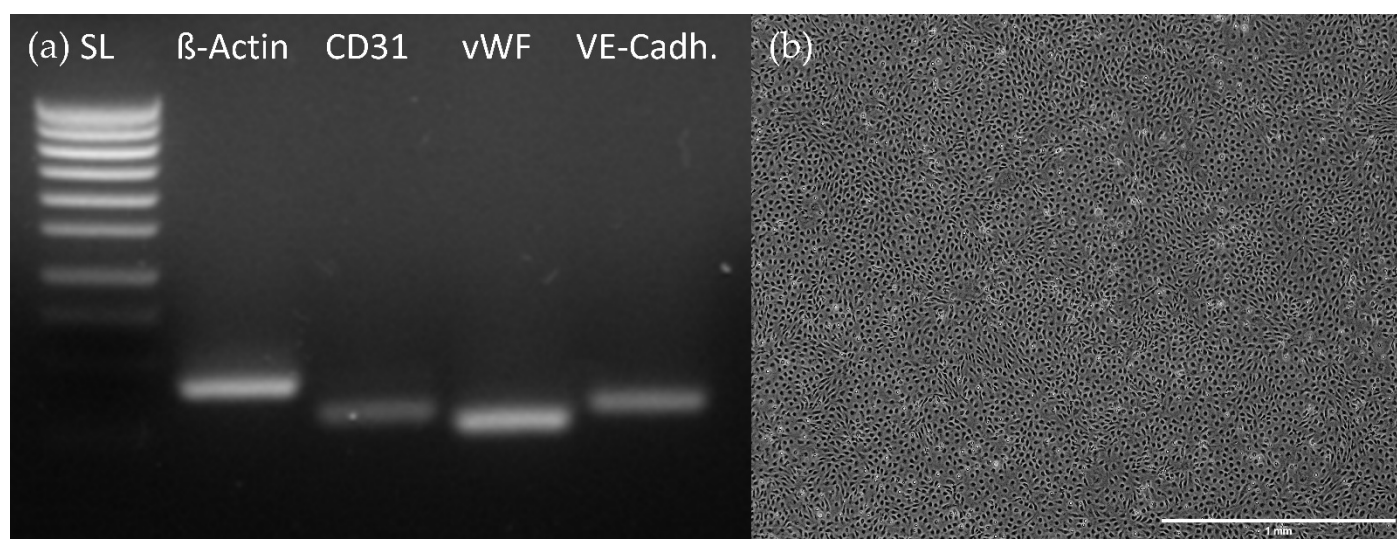
<sup>4</sup> Member of the DFG priority program SPP 2014

+ These authors contributed equally to this work

\* Correspondence: wiegmann.bettina@mh-hannover.de



**Supplement figure S1.** Schematic overview of the experiment. pCECs: porcine carotid artery endothelial cells; HFM: Hollow Fiber Membrane.



**Supplement figure S2.** Characterization of the endothelial geno- and phenotype. (a) RT-PCR for the qualitative expression analysis of the endothelial specific CD31, vWF and VE-Cadherin. SL: standard ladder, vWF: von Willebrand factor, VE-Cadh.: vascular endothelium-cadherin; (b) phase contrast microscopy showing the typical cobblestone morphology of the confluent EC-monolayer.