

Supplementary Information

Thin film Biocomposite Membrane for Forward Osmosis Supported by Eggshell Membrane

Teayeop Kim^{1,†}, Sunho Park^{2,3,†}, Yoonkyung Lee¹, Jangho Kim^{2,3,*} and Kyunghoon Kim^{1,*}

¹ School of Mechanical Engineering, Sungkyunkwan University, Suwon 16419, Republic of Korea; skkty@skku.edu (T. K.), yi9257kr@skku.edu (Y.L.)

² Department of Rural and Biosystems Engineering, Chonnam National University, Gwangju 61186, Republic of Korea; preference9330@gmail.com (S. P.)

³ Interdisciplinary Program in IT-Bio Convergence System, Chonnam National University, Gwangju, 61186, Republic of Korea

* Correspondence: kenkim@skku.edu (K. K.), rain2000@jnu.ac.kr (J. K.).

† These authors equally contribute to this paper.

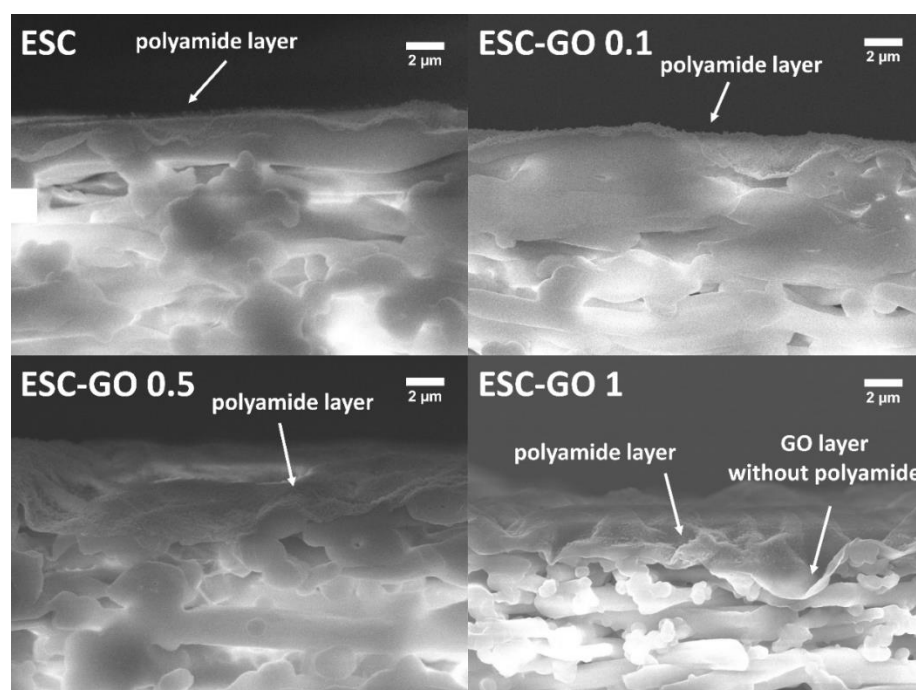


Figure S1. FESEM image of ESC and ESC-GO membranes at polyamide layer.

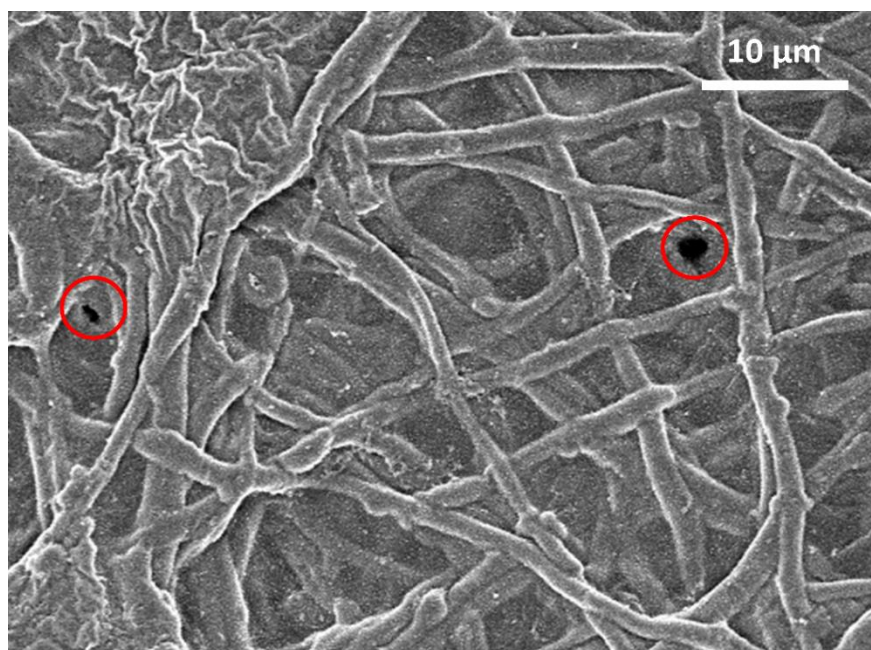


Figure S2. Defects at polyamide layer in ESC membranes.

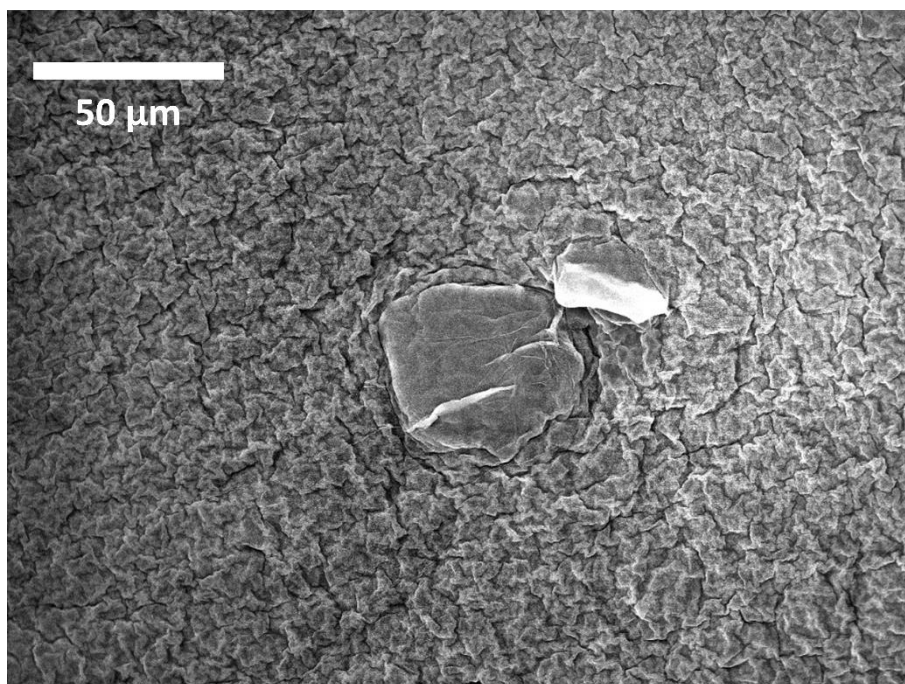


Figure S3. Large agglomeration of GO in ESM-GO 1.