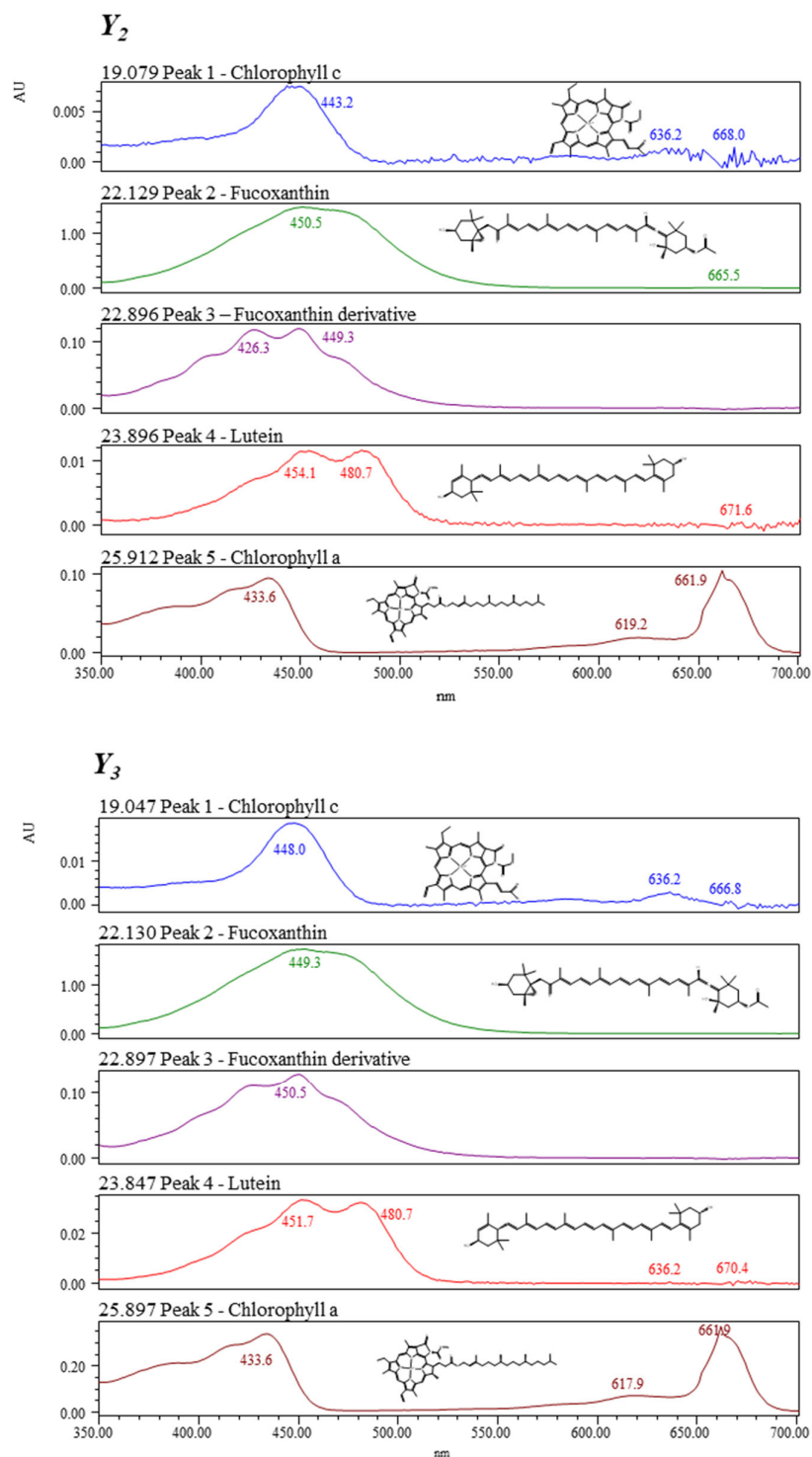


## Supplementary Material

**Table S1.** *MAE*, *RMSE* and *RMSE-MAE* values for each response (*Y*) at different *T* and *S*.

VARIABLES		Y <sub>1</sub> (µg Fx/g AS)			Y <sub>2</sub> (mg E/g AS)			Y <sub>3</sub> (mg Fx/g AS)		
<i>S</i> (%)	<i>T</i> (°C)	<i>MAE</i>	<i>RMSE</i>	<i>RMSE-MAE</i>	<i>MAE</i>	<i>RMSE</i>	<i>RMSE-MAE</i>	<i>MAE</i>	<i>RMSE</i>	<i>RMSE-MAE</i>
<b>50</b>	5	89.5	122	32.5	15.3	19.5	4.3	0.3	0.4	0.1
	25	153.6	194.4	40.8	10.5	14.9	4.4	0.6	0.9	0.3
	45	50.8	59.5	8.8	16.4	21.7	5.3	0.4	0.5	0.1
	65	228	262.2	34.2	8.5	13.1	4.6	0.6	0.7	0.1
	85	173.4	289	115.6	6.5	15.9	9.3	0.6	1.4	0.8
<b>60</b>	5	390.8	445.1	54.3	15.1	17.6	2.4	1.4	1.6	0.2
	25	179.6	206.7	27.1	10.7	14.5	3.8	0.5	0.5	0.1
	45	215.9	257.3	41.4	14.3	20.6	6.3	0.6	0.7	0.1
	65	391.2	501.4	110.2	9.5	12.5	3.0	0.3	0.6	0.3
	85	320.1	411	90.9	6.9	9.4	2.5	2.1	2.6	0.5
<b>70</b>	5	935.2	1039.2	104.0	17.7	22.0	4.3	1.9	2.2	0.3
	25	157.9	217.2	59.3	4.6	6.5	1.9	0.3	0.4	0.1
	45	166.4	198.2	31.8	19.5	27.4	7.9	0.5	0.6	0.1
	65	302.3	418.8	116.5	9.0	11.2	2.2	0.7	1.0	0.3
	85	292.2	384.6	92.4	9.5	13.9	4.4	2.1	2.7	0.7
<b>80</b>	5	726	838.2	112.2	18.0	23.9	5.9	2.3	2.6	0.4
	25	274.9	368.5	93.6	6.9	9.4	2.5	0.9	1.1	0.2
	45	283.5	323.1	39.6	10.1	12.4	2.3	0.7	0.8	0.2
	65	135.8	189.6	53.8	17.7	23.8	6.1	0.9	1.2	0.3
	85	361.9	482.7	120.9	11.2	16.3	5.2	2.4	3.0	0.7
<b>90</b>	5	427.4	592.9	165.4	18.2	22.4	4.3	2.4	2.9	0.4
	25	405.3	469.6	64.3	23.2	27.4	4.2	1.5	1.9	0.4
	45	401.8	461.3	59.6	45.5	54.4	8.9	0.9	1.2	0.2
	65	267.9	300.2	32.3	20.7	23.9	3.2	0.8	1.1	0.3
	85	311.1	392.5	81.4	18.5	24.0	5.5	2.1	3.1	0.9
<b>100</b>	5	511.9	748.2	236.4	10.2	12.4	2.2	5.7	7.1	1.3
	25	220.3	295.2	75.0	14.6	17.5	2.9	5.5	7.7	2.1
	45	384	443.1	59.1	7.7	10.0	2.2	3.0	3.7	0.7
	65	242.3	326.1	83.8	10.0	12.7	2.7	4.6	5.9	1.3
	85	344.2	429.7	85.5	12.1	17.5	5.4	4.7	6.7	2.0

## Absorbance spectra



**Figure S1.** Absorption spectra for the five identified pigments found in  $Y_2$  and  $Y_3$  using HPLC-DAD.