

Title: Barbamide binds to kappa opioid receptors and enhances store-operated calcium entry in mouse sensory neurons.

Authors: Andrea Hough¹, Connor Criswell², Asef Faruk,¹ Jane E. Cavanaugh,¹ Benedict Kolber^{2,**}, Kevin Tidgewell^{1,**}

¹Duquesne University, Division of Medicinal Chemistry, Pittsburgh, PA 15282; ²University of Texas at Dallas, Department of Neuroscience, Center for Advanced Pain Studies Richardson, TX 75080;

Contents of Supporting Information

Contents	page
Figure S1. ¹ H NMR spectrum of barbamide (1) in CDCl ₃ at 500 MHz	2
Figure S2. ¹³ C spectrum of barbamide (1) in CDCl ₃ at 500 MHz	3
Figure S3. COSY spectrum of barbamide (1) in CDCl ₃ at 500 MHz	4
Figure S4. HSQC spectrum of barbamide (1) in CDCl ₃ at 500 MHz	5
Figure S5. HMBC spectrum of barbamide (1) in CDCl ₃ at 500 MHz	6

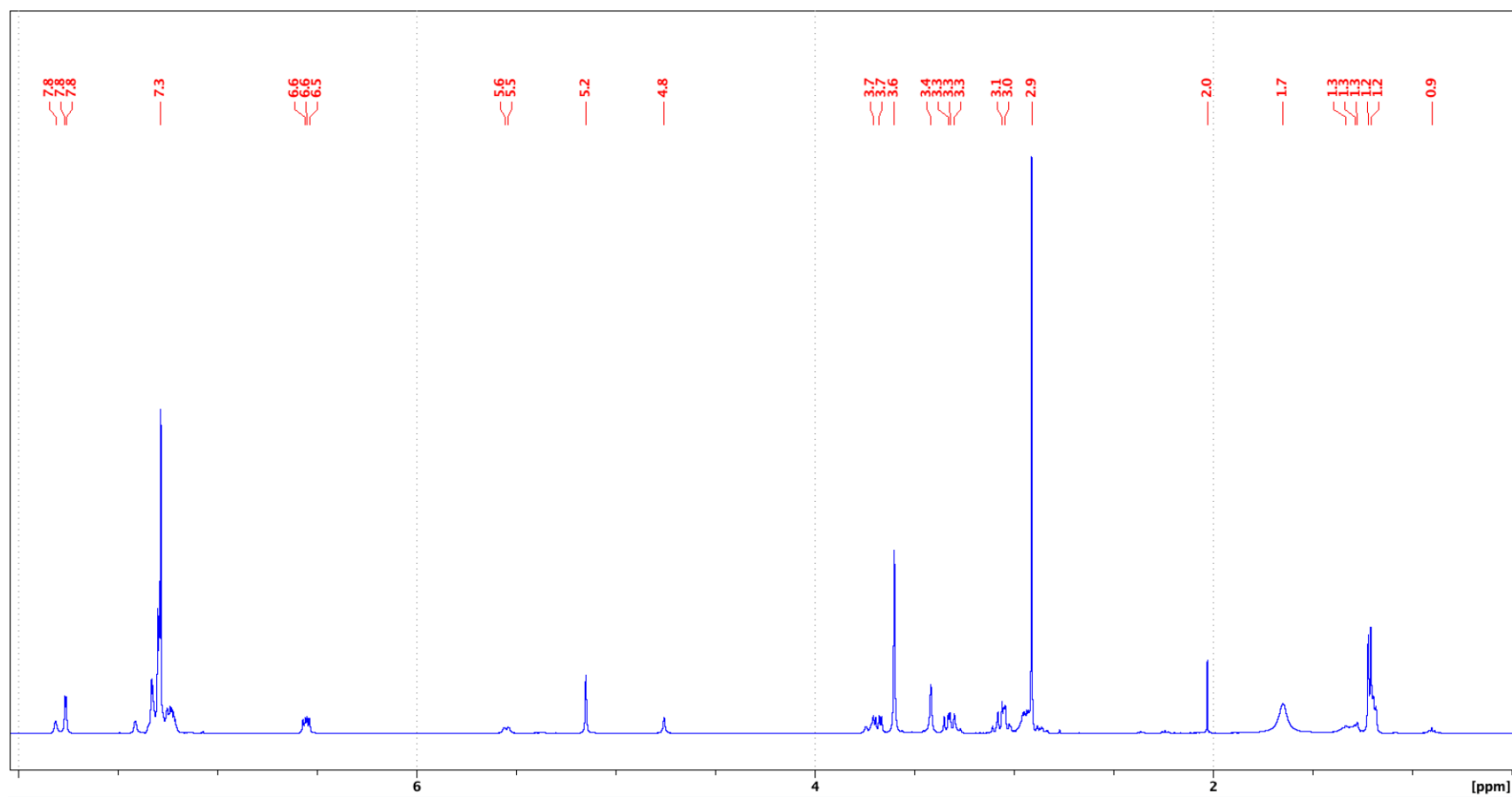


Figure S1. ¹H NMR spectrum of barbamide (**1**) in CDCl₃ at 500 MHz

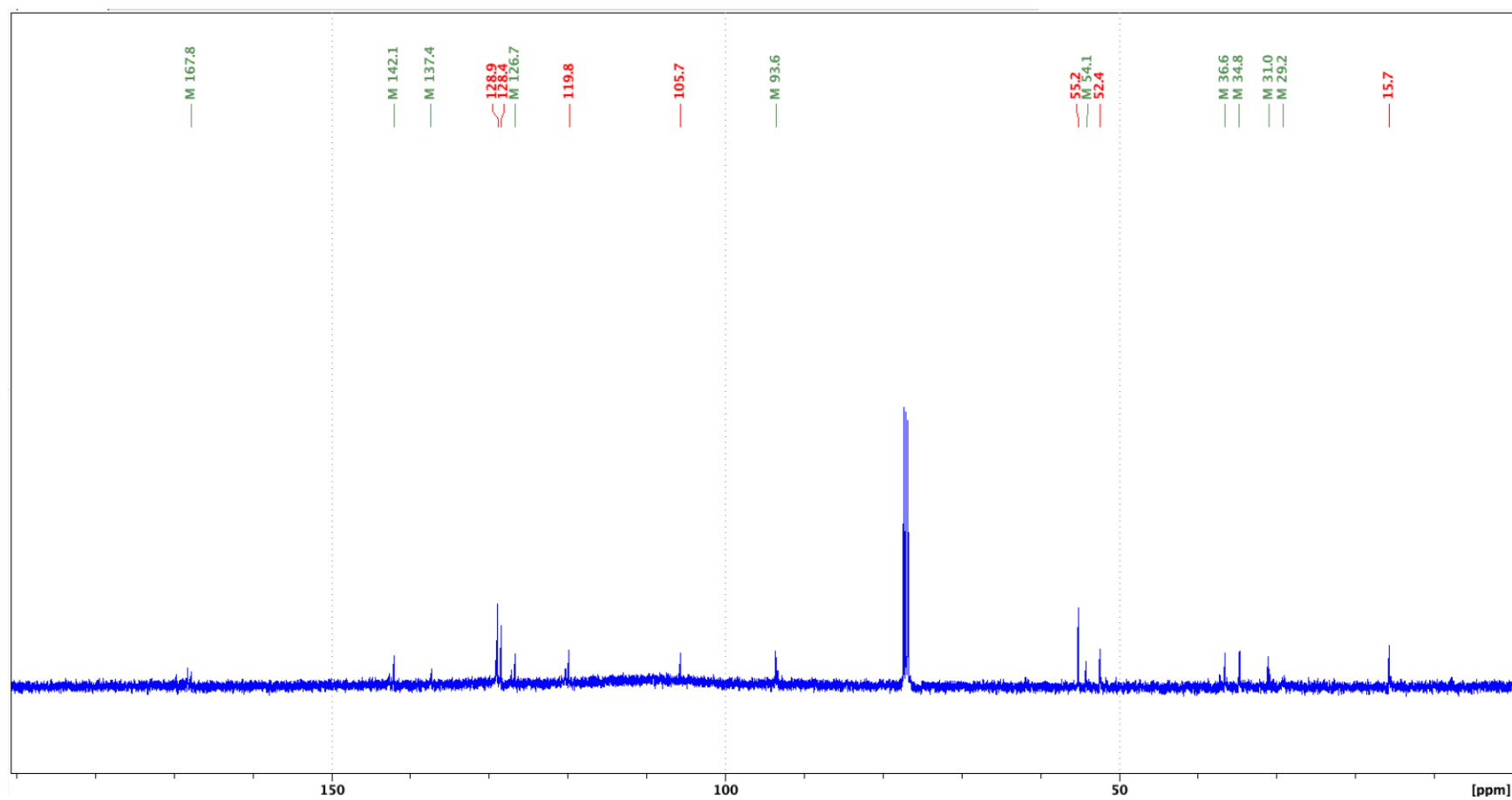


Figure S2. ¹³C spectrum of barbamide (**1**) in CDCl₃ at 500 MHz

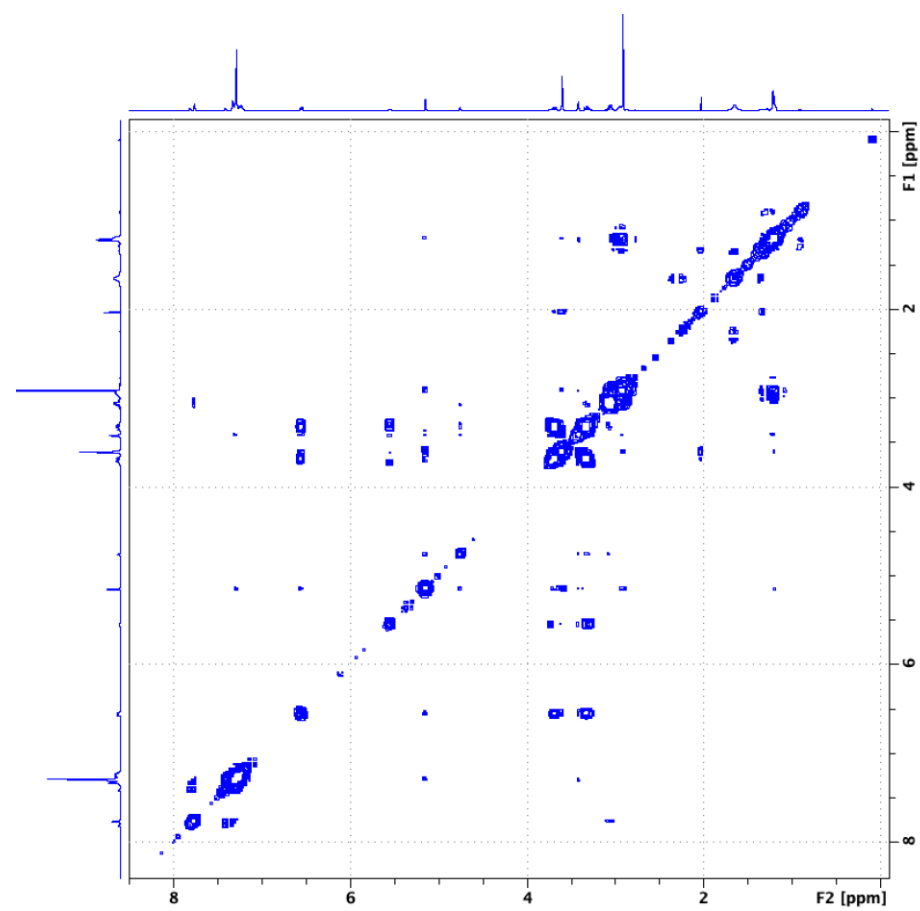


Figure S3. COSY spectrum of barbamide (**1**) in CDCl₃ at 500 MHz

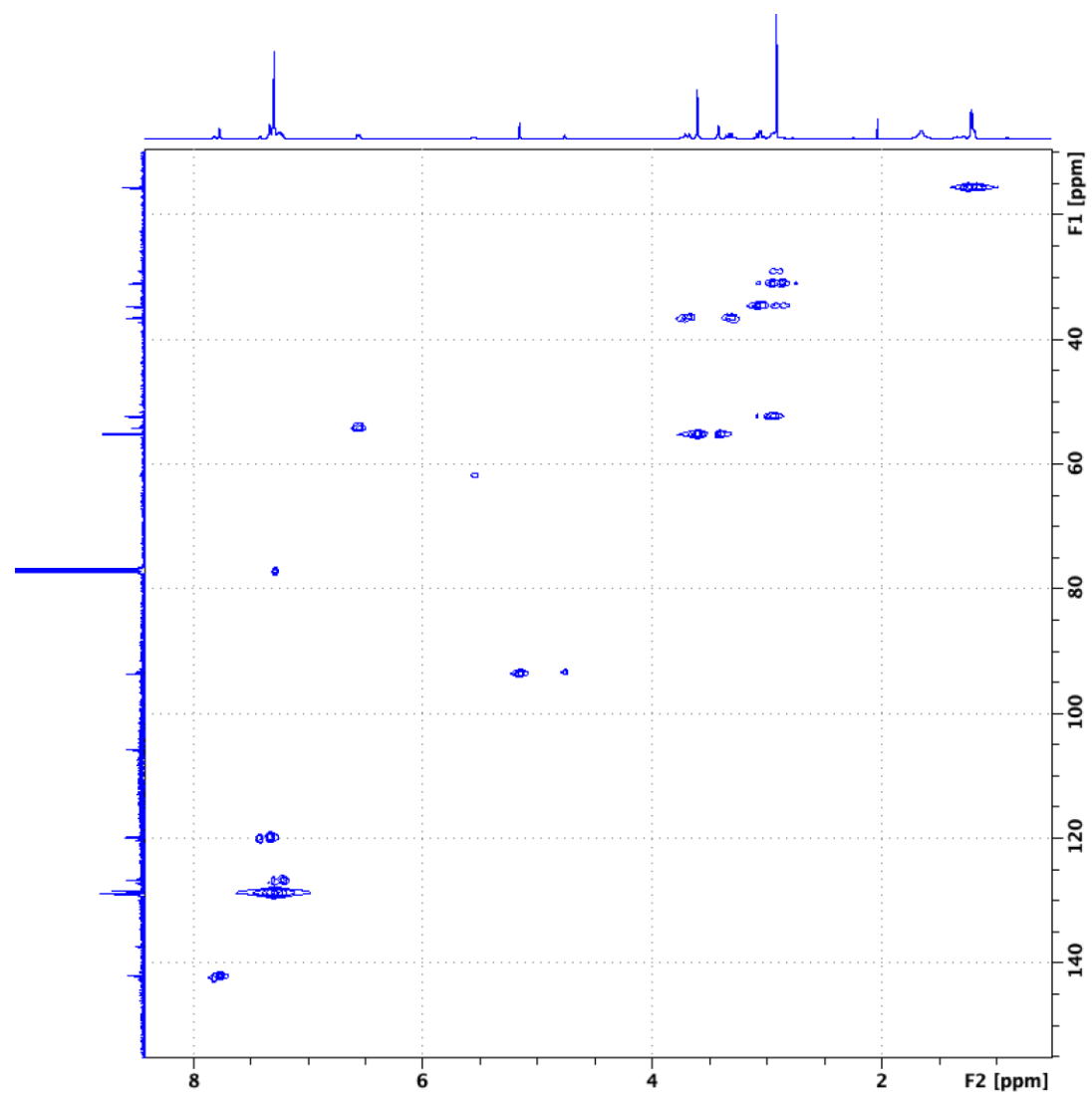


Figure S4. HSQC spectrum of barbamide (**1**) in CDCl₃ at 500 MHz

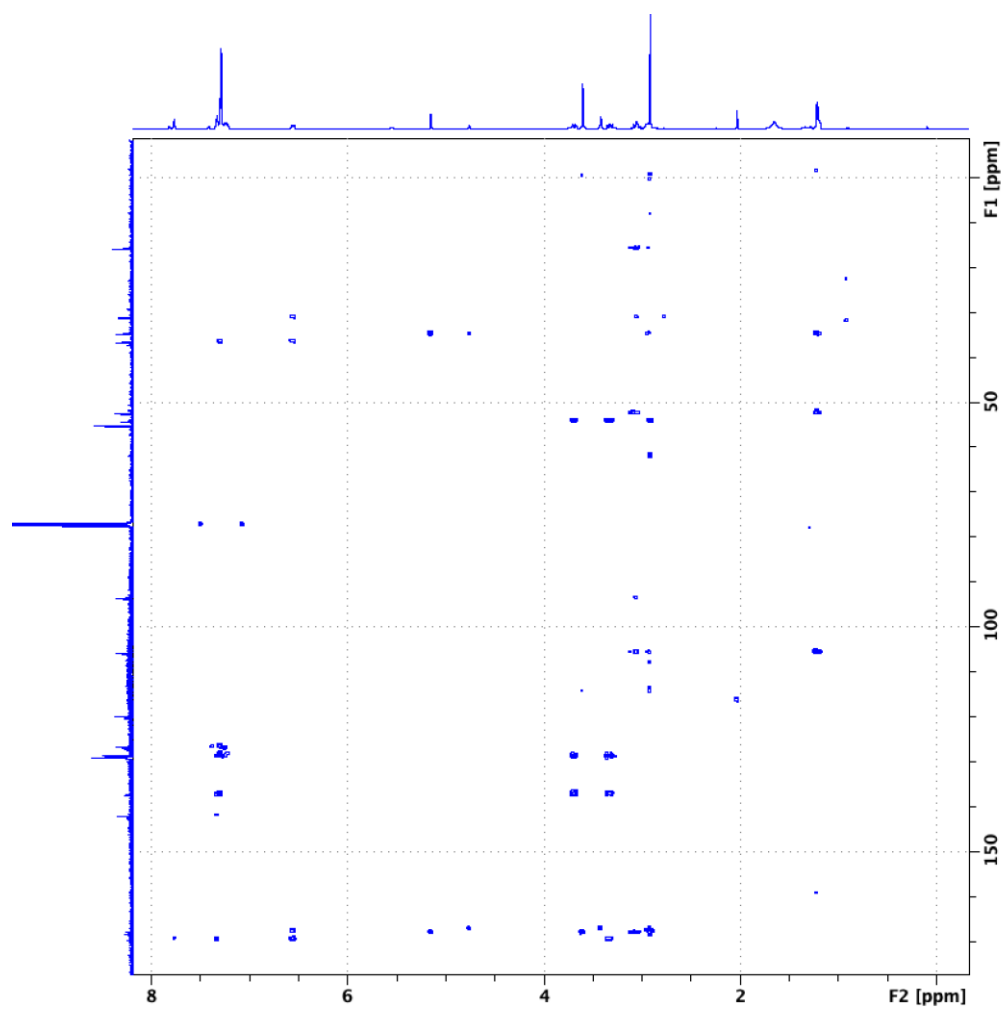


Figure S5. HMBC spectrum of barbamide (**1**) in CDCl₃ at 500 MHz